



BRITISH COLUMBIA
CENTRE *for* EXCELLENCE
in HIV/AIDS

BC HIV Treatment Program

Monthly Report
October 2025



FOREWORD

The British Columbia Centre for Excellence in HIV/AIDS (BC-CfE) is a provincial treatment and research program, with the mandate to improve the health of people living with HIV (“PLWH”), and those at elevated risk of acquiring HIV in British Columbia (BC), by advancing and promoting programs for treatment and prevention of HIV, and related conditions, guided by Treatment as Prevention® (TasP®) principles. Funded by the BC’s Ministry of Health, through the province’s PharmaCare Program, the BC-CfE’s Drug Treatment Programs provide medications for HIV treatment, prevention, and select related conditions, at no charge, to medically eligible BC residents living with HIV, or at elevated risk of HIV acquisition. The provision of these medications are based on guidelines developed by the BC-CfE’s Committee for Drug Evaluation and Therapy (CDET) and program consideration.

A key component of the BC-CfE’s mandate is to monitor and evaluate its HIV Treatment Program, reporting on a regular basis and providing essential information to BC’s health authorities, treating clinicians, and the community at large. This HIV Treatment Program Report provides an overview of the use of antiretroviral medications in BC for the treatment of HIV, common drug combinations, key monitoring parameters, and distribution of program participants throughout the province.

Figures and graphs in this document are best viewed in colour.

Please note that any comments or queries regarding this report should be forwarded to info@bccfe.ca.

BC Centre for Excellence in HIV/AIDS Drug Treatment Programs

St. Paul’s Hospital
687 - 1081 Burrard Street
Vancouver, BC
V6Z 1Y6

Tel: 604.806.8515
Fax: 604.806.9044

Website: www.bccfe.ca
Email: info@bccfe.ca

Funding for the BC Centre for Excellence in HIV/AIDS is provided through BC’s PharmaCare and Ministry of Health.

DISCLAIMER: All information presented in this report is generated from a secure, live database maintained by the BC-CfE. Privacy and confidentiality are matters which are taken very seriously and strict rules and procedures are applied to ensure that the information stored is secure.

Figures and tables provided in this report represent the best estimates at the time the document was generated, and may be subject to change. Please be advised that the information in this document is provided in good faith and is derived from sources understood to be accurate and up-to-date at the report’s date of publication.

© 2026 BC Centre for Excellence in HIV/AIDS



TABLE OF CONTENTS

1. List of Figures

- 1.1 Distribution of Participants on Antiretroviral Treatment in British Columbia by Health Authority
- 1.2 Distribution of Participants in HIV Treatment Program by Regimen Category
- 1.3 Distribution of Participants in HIV Treatment Program by Regimen Category
- 1.4 Distribution of Participants on Nucleos(t)ide Analogue Reverse Transcriptase Inhibitors by INGREDIENT
- 1.5 Number of Participants on Nucleos(t)ide Analogue Reverse Transcriptase Inhibitors by INGREDIENT
- 1.6 Distribution of Participants on Protease Inhibitors by INGREDIENT
- 1.7 Number of Participants on Protease Inhibitors by INGREDIENT
- 1.8 Distribution of Participants on Non-Nucleoside Analogue Reverse Transcriptase Inhibitors by INGREDIENT
- 1.9 Number of Participants on Non-Nucleoside Analogue Reverse Transcriptase Inhibitors by INGREDIENT
- 1.10 Distribution of Participants on Integrase Inhibitors by INGREDIENT
- 1.11 Number of Participants on Integrase Inhibitors by INGREDIENT
- 1.12 Distribution of Participants on Other Antiretroviral Drug Classes by INGREDIENT
- 1.13 Number of Participants on Other Antiretroviral Drug Classes by INGREDIENT
- 1.14 Distribution of Participants on Antiretroviral Treatment by Number of Antiretrovirals (graph)
- 1.15 Distribution of Participants on Antiretroviral Treatment by Number of Antiretrovirals (table)
- 1.16 Percent Distribution of Active Participants by CD4 Count
- 1.17 Distribution of Active Participants by CD4 Count
- 1.18 Initial Regimen Composition for Antiretroviral Treatment Naïve Participants Starting Treatment (graph)
- 1.19 Initial Regimen Composition for Antiretroviral Treatment Naïve Participants Starting Treatment (table)
- 1.20 Pre-entry CD4 for Antiretroviral Treatment Naïve Participants in the HIV Treatment Program (graph)
- 1.21 Pre-entry CD4 for Antiretroviral Treatment Naïve Participants in the HIV Treatment Program (table)
- 1.22 Antiretroviral Resistance by Drug Class Among Participants on Antiretroviral Treatment (graph)
- 1.23 Antiretroviral Resistance by Drug Class Among Participants on Antiretroviral Treatment (table)
- 1.24 Active Participants by number of Antiretroviral Drug Classes with Resistance (graph)
- 1.25 Active Participants by number of Antiretroviral Drug Classes with Resistance (table)

2. List of Tables

- 2.1 Active participants by Year of Program Initiation (1987 - 2025) - as of January 2025
- 2.2 HIV Viral Load (copies/mL) and CD4 (cells/ μ L) for Participants on Antiretroviral Treatment
- 2.3 BC-CfE HIV Treatment Program Enrolment

3. Distribution of HIV Treatment Program Active Participants

- 3.1 Provincial Health Authorities
- 3.2 Interior Health Authority & Kelowna
- 3.3 Fraser Health Authority & Surrey
- 3.4 Vancouver Coastal Health Authority & Vancouver
- 3.5 Vancouver Island Health Authority & Victoria
- 3.6 Northern Health Authority & Prince George

TABLE OF CONTENTS (continued)

4. Health Authority Tables

INTERIOR HEALTH

- 4.1 Distribution of Participants by Age & Sex at Birth
- 4.2 Distribution of Participants by Program Duration
- 4.3 Distribution of Antiretroviral Treatment Prescribers

FRASER HEALTH

- 4.4 Distribution of Participants by Age & Sex at Birth
- 4.5 Distribution of Participants by Program Duration
- 4.6 Distribution of Antiretroviral Treatment Prescribers

VANCOUVER COASTAL

- 4.7 Distribution of Participants by Age & Sex at Birth
- 4.8 Distribution of Participants by Program Duration
- 4.9 Distribution of Antiretroviral Treatment Prescribers

VANCOUVER ISLAND

- 4.10 Distribution of Participants by Age & Sex at Birth
- 4.11 Distribution of Participants by Program Duration
- 4.12 Distribution of Antiretroviral Treatment Prescribers

NORTHERN HEALTH

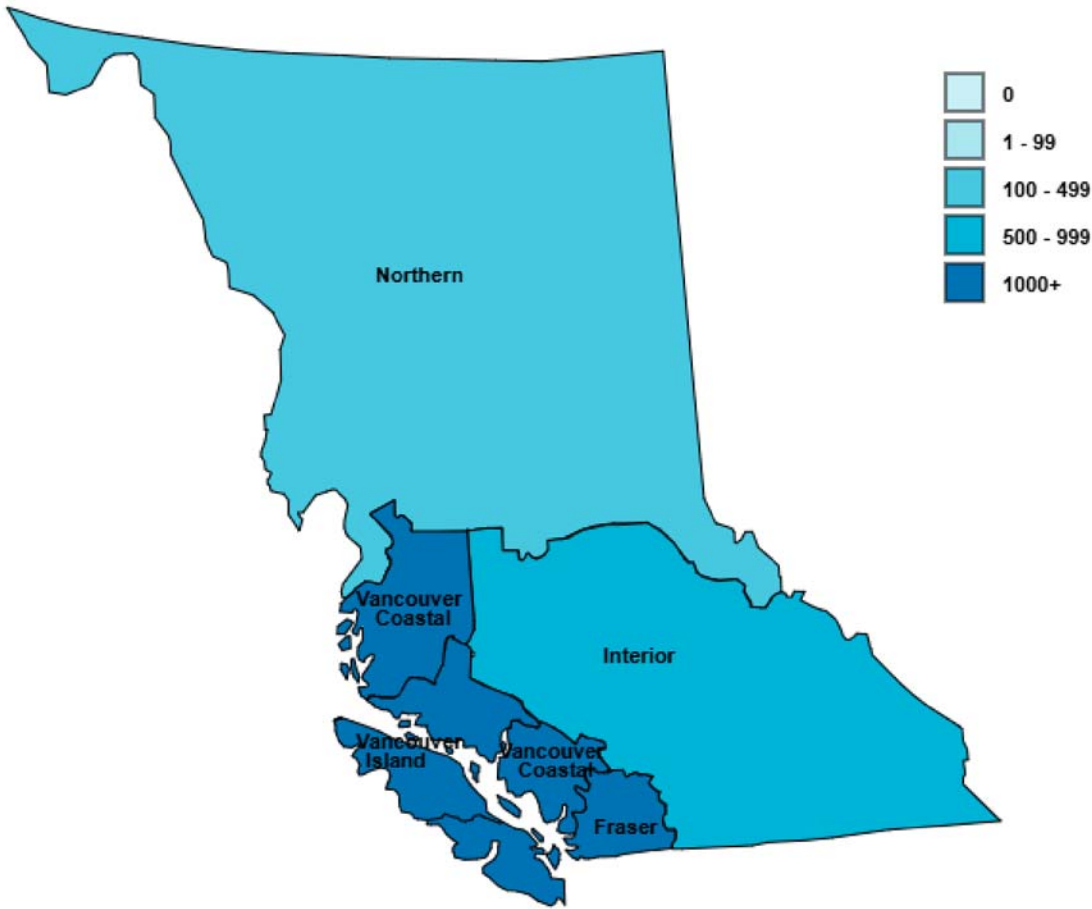
- 4.13 Distribution of Participants by Age & Sex at Birth
- 4.14 Distribution of Participants by Program Duration
- 4.15 Distribution of Antiretroviral Treatment Prescribers

INDIGENOUS PARTICIPANTS

- 4.16 Distribution of Indigenous Participants by Health Service Delivery Area and Sex at Birth



1.1 Distribution of Participants on Antiretroviral Treatment in British Columbia by Health Authority October 2025
N = 7776

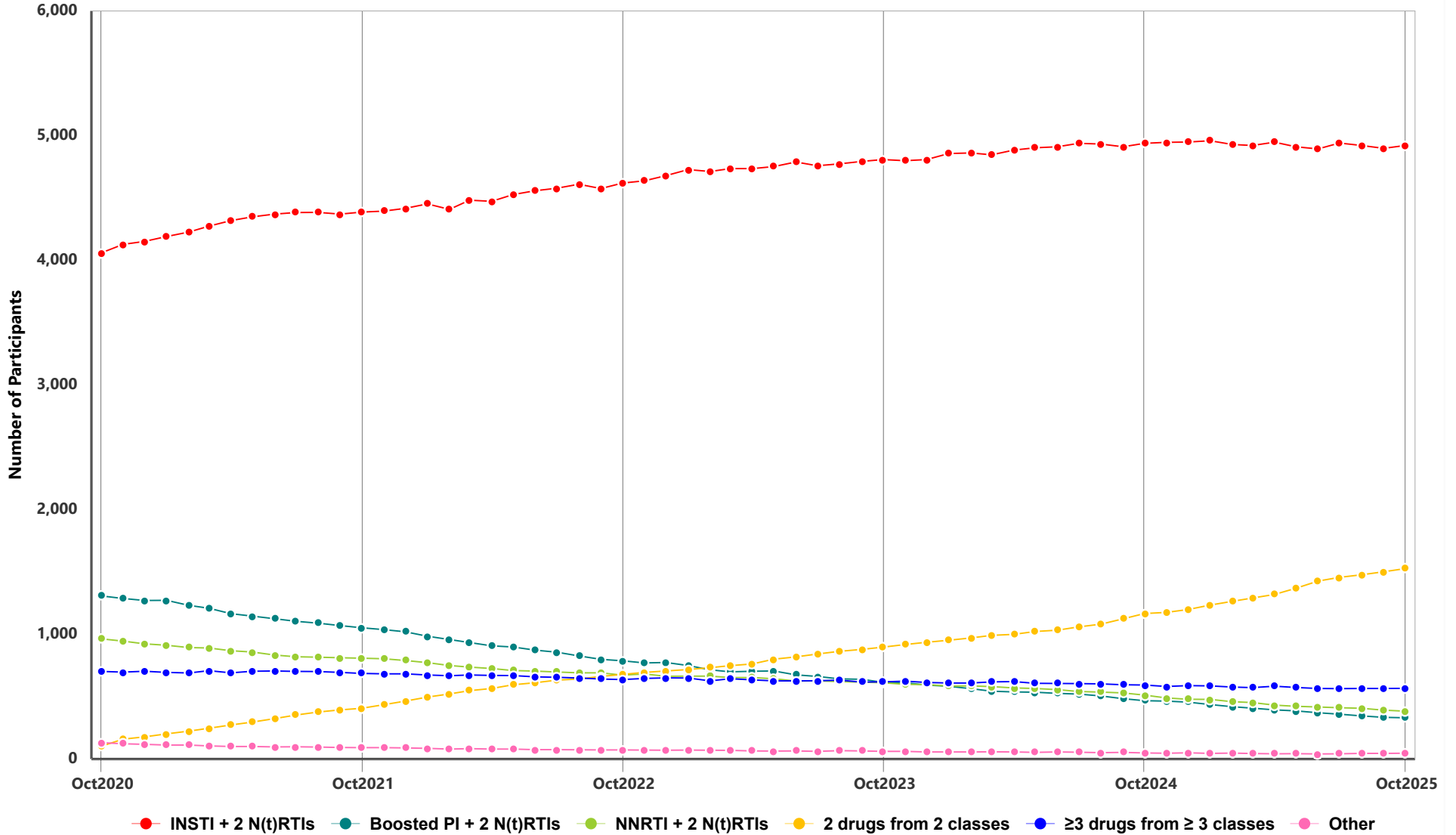


Health Authority	Male	Female	All
FRASER	1661	510	2171
VANCOUVER ISLAND	877	180	1057
VANCOUVER COASTAL	3217	454	3671
INTERIOR	485	126	611
NORTHERN	173	82	255
	6413	1352	7765
Unknown/not stated			11
Total			7776

On antiretroviral treatment is defined as being on treatment in the current month
Unknown/not stated is defined as being on treatment in the current month, and city of residence is unknown
Male & Female refer to Sex assigned at birth



1.2 Distribution of Participants in HIV Treatment Program by Regimen Category
October 2020 - October 2025



1.3 Distribution of Participants in HIV Treatment Program by Regimen Category

MON-YYYY	Total	INSTI		Boosted PI		NNRTI		2 drugs from 2 classes		≥3 drugs from ≥3 classes		Other	
		n	%	n	%	n	%	n	%	n	%	n	%
NOV-2023	7612	4799	63.0	611	8.0	599	7.9	918	12.1	624	8.2	61	0.8
DEC-2023	7603	4808	63.2	593	7.8	596	7.8	936	12.3	614	8.1	56	0.7
JAN-2024	7642	4856	63.5	583	7.6	585	7.7	952	12.5	609	8.0	57	0.7
FEB-2024	7647	4861	63.6	564	7.4	586	7.7	971	12.7	609	8.0	56	0.7
MAR-2024	7636	4846	63.5	543	7.1	580	7.6	991	13.0	618	8.1	58	0.8
APR-2024	7670	4884	63.7	538	7.0	570	7.4	1000	13.0	621	8.1	57	0.7
MAY-2024	7687	4902	63.8	536	7.0	566	7.4	1023	13.3	607	7.9	53	0.7
JUN-2024	7687	4910	63.9	526	6.8	556	7.2	1033	13.4	606	7.9	56	0.7
JUL-2024	7718	4938	64.0	520	6.7	541	7.0	1060	13.7	605	7.8	54	0.7
AUG-2024	7709	4933	64.0	505	6.6	537	7.0	1081	14.0	602	7.8	51	0.7
SEP-2024	7697	4911	63.8	484	6.3	530	6.9	1124	14.6	595	7.7	53	0.7
OCT-2024	7725	4938	63.9	467	6.0	512	6.6	1167	15.1	593	7.7	48	0.6
NOV-2024	7703	4946	64.2	464	6.0	490	6.4	1176	15.3	581	7.5	46	0.6
DEC-2024	7720	4949	64.1	456	5.9	479	6.2	1199	15.5	588	7.6	49	0.6
JAN-2025	7739	4959	64.1	437	5.6	478	6.2	1234	15.9	586	7.6	45	0.6
FEB-2025	7696	4929	64.0	419	5.4	460	6.0	1264	16.4	577	7.5	47	0.6
MAR-2025	7689	4921	64.0	408	5.3	453	5.9	1291	16.8	572	7.4	44	0.6
APR-2025	7719	4947	64.1	394	5.1	432	5.6	1320	17.1	584	7.6	42	0.5
MAY-2025	7705	4911	63.7	386	5.0	423	5.5	1369	17.8	573	7.4	43	0.6
JUN-2025	7713	4893	63.4	371	4.8	417	5.4	1427	18.5	565	7.3	40	0.5
JUL-2025	7772	4940	63.6	359	4.6	411	5.3	1457	18.7	564	7.3	41	0.5
AUG-2025	7762	4921	63.4	346	4.5	407	5.2	1478	19.0	565	7.3	45	0.6
SEP-2025	7737	4898	63.3	334	4.3	392	5.1	1502	19.4	566	7.3	45	0.6
OCT-2025	7776	4921	63.3	331	4.3	384	4.9	1527	19.6	567	7.3	46	0.6

n is number of participants on the specified regimen class in the specified month

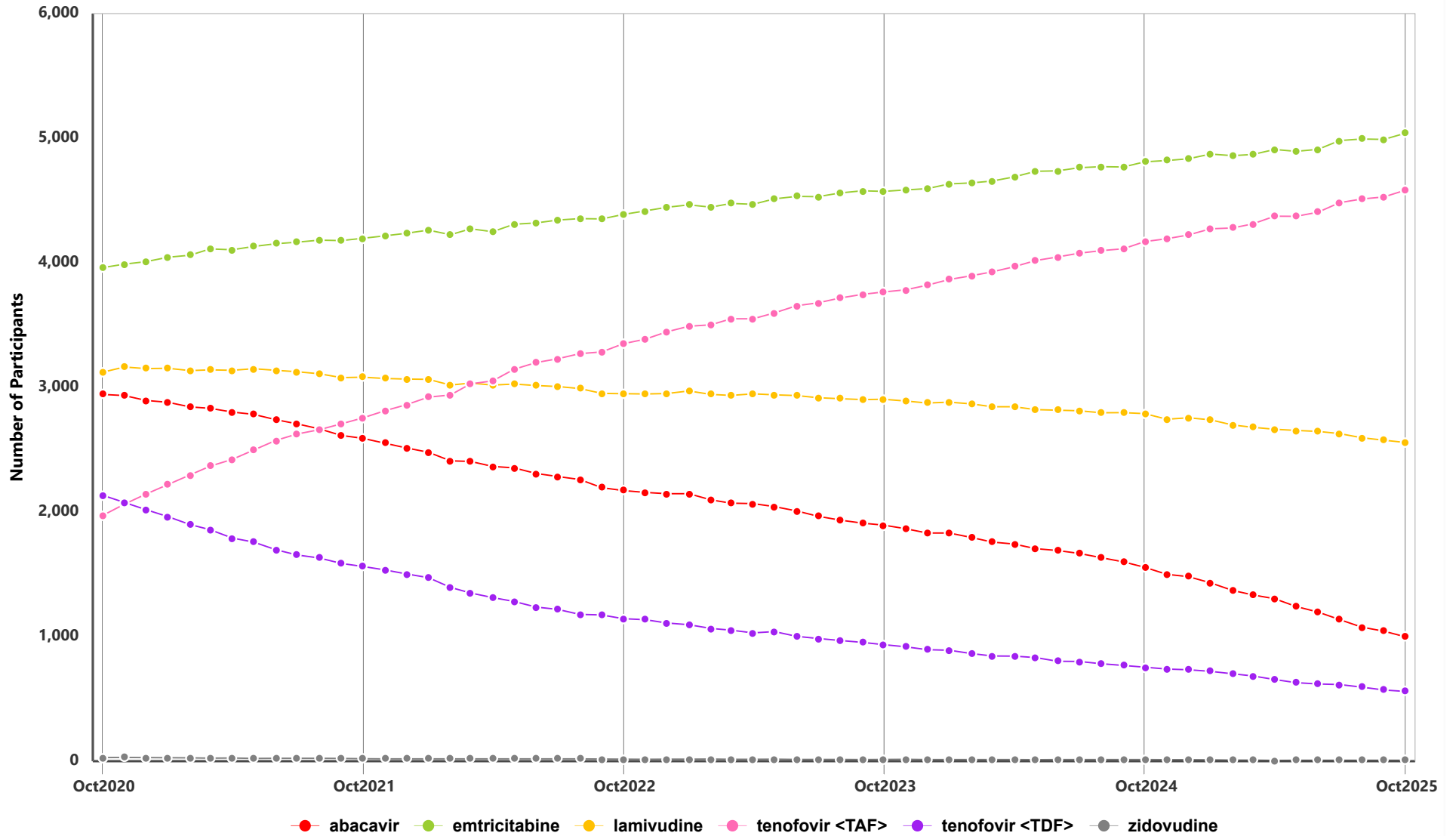
% is ratio of **n** and total number of participants on antiretroviral treatment in the specified month

INSTI: Integrase Inhibitor, **PI:** Protease Inhibitor, **NNRTI:** Non-Nucleoside Analogue Reverse Transcriptase Inhibitor,

N(t)RTI: Nucleos(t)ide Analogue Reverse Transcriptase Inhibitor



1.4 Distribution of Participants on Nucleos(t)ide Analogue Reverse Transcriptase Inhibitors by INGREDIENT
October 2020 - October 2025





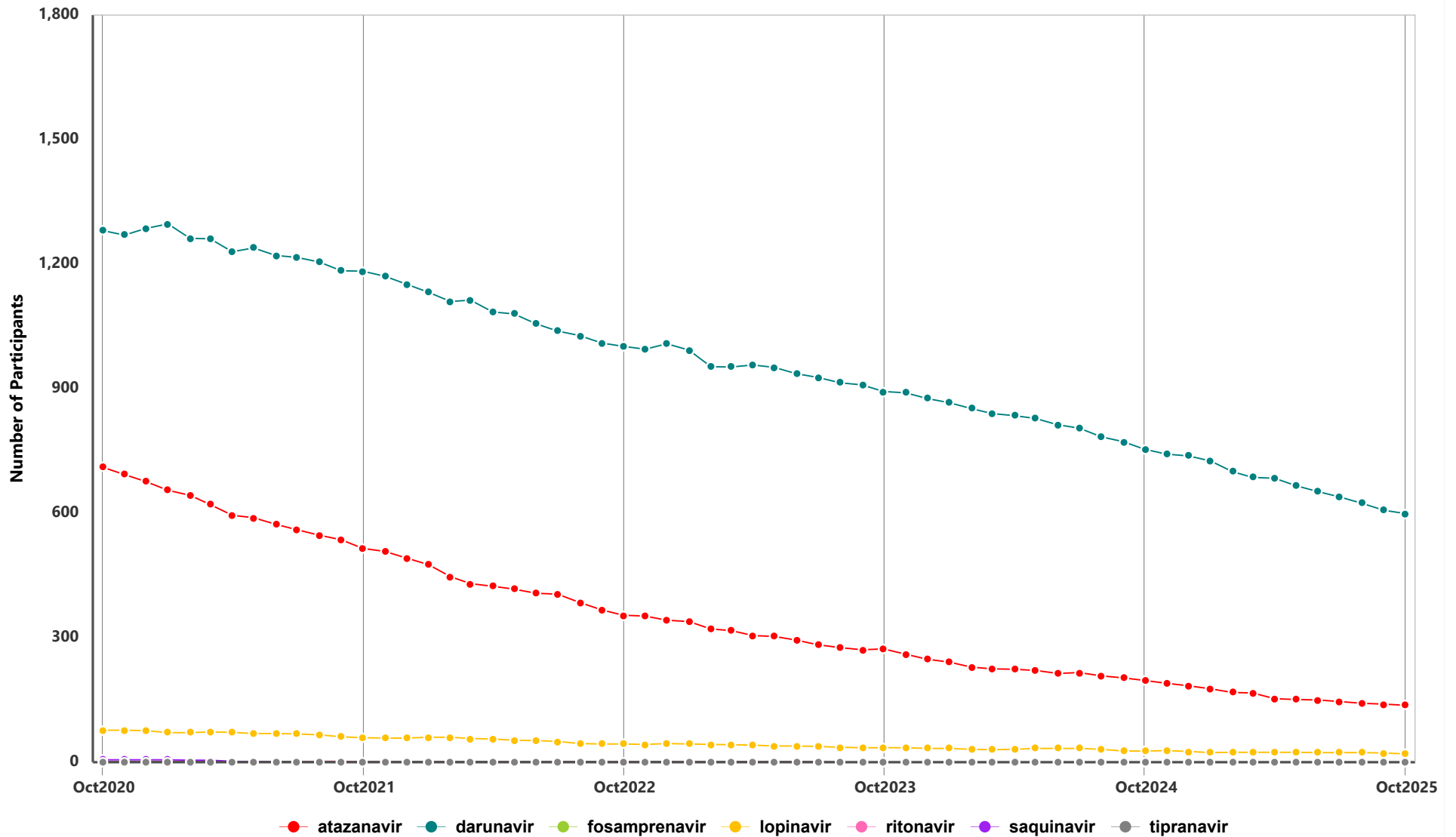
1.5 Number of Participants on Nucleos(t)ide Analogue Reverse Transcriptase Inhibitors by INGREDIENT

MON-YYYY	Total Participants	abacavir		emtricitabine		lamivudine		tenofovir <TAF>		tenofovir <TDF>		zidovudine	
		n	%	n	%	n	%	n	%	n	%	n	%
NOV-2023	7474	1866	25.0	4585	61.4	2891	38.7	3783	50.6	918	12.3	15	0.2
DEC-2023	7464	1831	24.5	4595	61.6	2874	38.5	3820	51.2	895	12.0	13	0.2
JAN-2024	7502	1831	24.4	4633	61.8	2881	38.4	3866	51.5	890	11.9	13	0.2
FEB-2024	7504	1795	23.9	4641	61.9	2868	38.2	3896	51.9	864	11.5	13	0.2
MAR-2024	7493	1759	23.5	4656	62.1	2845	38.0	3927	52.4	844	11.3	13	0.2
APR-2024	7525	1742	23.2	4690	62.3	2844	37.8	3968	52.7	843	11.2	13	0.2
MAY-2024	7544	1706	22.6	4734	62.8	2822	37.4	4018	53.3	832	11.0	12	0.2
JUN-2024	7544	1691	22.4	4738	62.8	2817	37.3	4047	53.7	801	10.6	13	0.2
JUL-2024	7570	1667	22.0	4763	62.9	2812	37.2	4077	53.9	800	10.6	13	0.2
AUG-2024	7563	1633	21.6	4771	63.1	2796	37.0	4097	54.2	782	10.3	13	0.2
SEP-2024	7551	1600	21.2	4769	63.2	2797	37.0	4113	54.5	768	10.2	13	0.2
OCT-2024	7577	1556	20.5	4810	63.5	2789	36.8	4170	55.0	754	10.0	13	0.2
NOV-2024	7555	1499	19.8	4821	63.8	2744	36.3	4193	55.5	739	9.8	11	0.2
DEC-2024	7572	1481	19.6	4835	63.9	2756	36.4	4223	55.8	734	9.7	11	0.2
JAN-2025	7591	1431	18.9	4873	64.2	2740	36.1	4273	56.3	721	9.5	10	0.1
FEB-2025	7547	1370	18.2	4860	64.4	2698	35.8	4280	56.7	701	9.3	8	0.1
MAR-2025	7537	1335	17.7	4869	64.6	2680	35.6	4312	57.2	684	9.1	8	0.1
APR-2025	7557	1304	17.3	4909	65.0	2664	35.3	4374	57.9	655	8.7	6	0.1
MAY-2025	7537	1242	16.5	4894	64.9	2654	35.2	4373	58.0	630	8.4	7	0.1
JUN-2025	7540	1196	15.9	4910	65.1	2647	35.1	4406	58.4	620	8.2	7	0.1
JUL-2025	7593	1137	15.0	4981	65.6	2629	34.6	4482	59.0	615	8.1	7	0.1
AUG-2025	7579	1076	14.2	4993	65.9	2596	34.3	4512	59.5	594	7.8	7	0.1
SEP-2025	7556	1043	13.8	4990	66.0	2576	34.1	4528	59.9	571	7.6	7	0.1
OCT-2025	7585	998	13.2	5039	66.4	2558	33.7	4582	60.4	560	7.4	7	0.1

n is defined as number of participants on antiretroviral treatment which contains the INGREDIENT;
% is calculated as ratio of "n" and number of participants whose treatment is of the given antiretroviral drug class



1.6 Distribution of Participants on Protease Inhibitors by INGREDIENT
October 2020 - October 2025

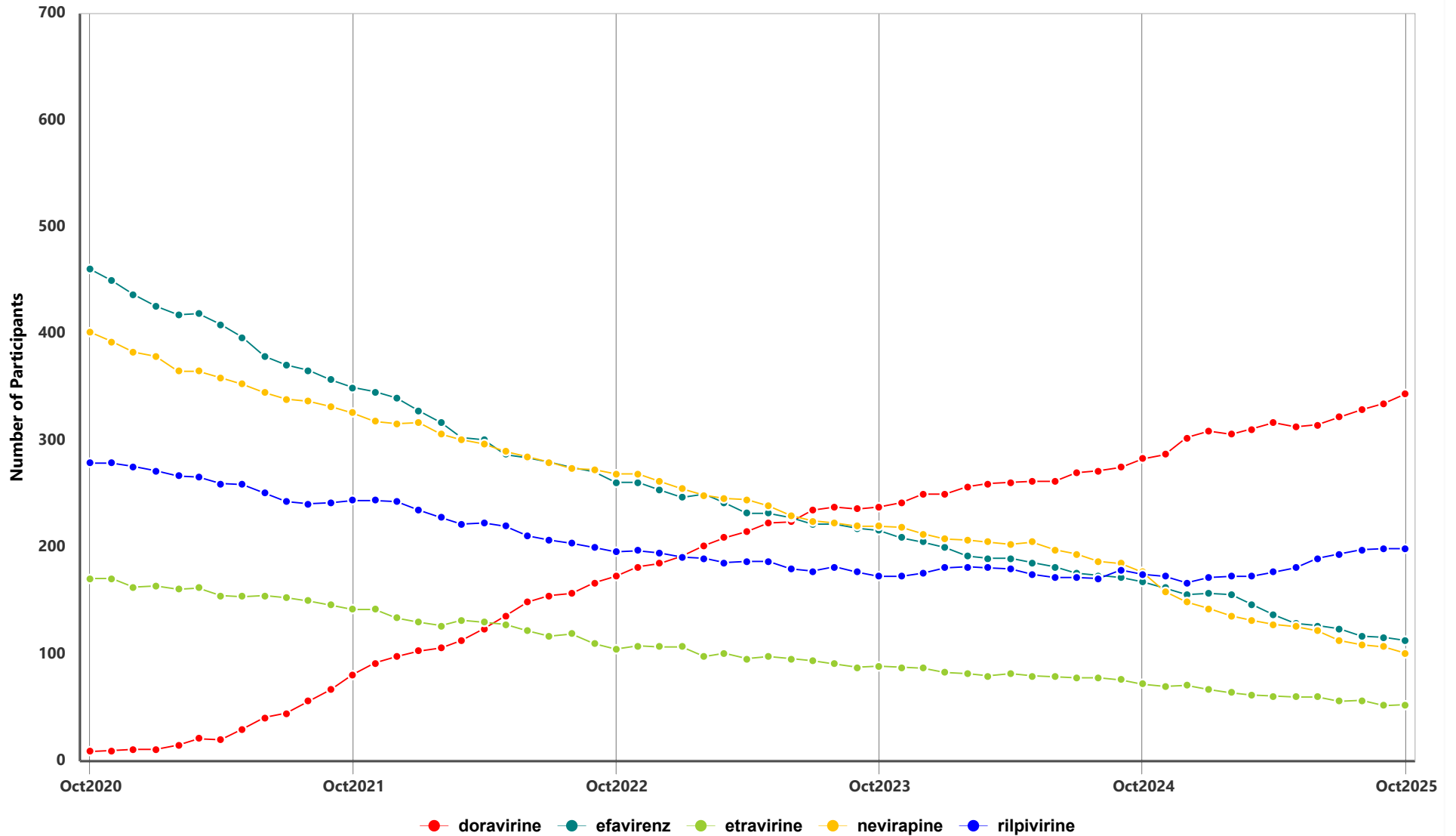


1.7 Number of Participants on Protease Inhibitors by INGREDIENT

MON-YYYY	Total Participants	atazanavir		darunavir		lopinavir		ritonavir		tipranavir	
		n	%	n	%	n	%	n	%	n	%
NOV-2023	1184	260	22.0	890	75.2	35	3.0	0	0.0	0	0.00
DEC-2023	1156	248	21.5	876	75.8	33	2.9	0	0.0	0	0.00
JAN-2024	1138	241	21.2	866	76.1	33	2.9	0	0.0	0	0.00
FEB-2024	1111	229	20.6	852	76.7	31	2.8	0	0.0	0	0.00
MAR-2024	1094	225	20.6	840	76.8	30	2.7	0	0.0	0	0.00
APR-2024	1088	224	20.6	835	76.8	31	2.9	0	0.0	0	0.00
MAY-2024	1081	221	20.4	828	76.6	33	3.1	0	0.0	0	0.00
JUN-2024	1059	214	20.2	813	76.8	33	3.1	0	0.0	0	0.00
JUL-2024	1052	216	20.5	805	76.5	33	3.1	0	0.0	0	0.00
AUG-2024	1021	208	20.4	784	76.8	31	3.0	0	0.0	0	0.00
SEP-2024	1001	203	20.3	772	77.1	27	2.7	0	0.0	0	0.00
OCT-2024	977	197	20.2	754	77.2	27	2.8	0	0.0	0	0.00
NOV-2024	957	190	19.9	742	77.5	28	2.9	0	0.0	0	0.00
DEC-2024	947	184	19.4	738	77.9	26	2.8	0	0.0	0	0.00
JAN-2025	922	177	19.2	726	78.7	23	2.5	0	0.0	0	0.00
FEB-2025	891	168	18.9	700	78.6	24	2.7	0	0.0	0	0.00
MAR-2025	875	167	19.1	686	78.4	24	2.7	0	0.0	0	0.00
APR-2025	860	153	17.8	684	79.5	24	2.8	0	0.0	0	0.00
MAY-2025	840	151	18.0	666	79.3	24	2.9	0	0.0	0	0.00
JUN-2025	823	150	18.2	652	79.2	23	2.8	0	0.0	0	0.00
JUL-2025	806	146	18.1	639	79.3	23	2.9	0	0.0	0	0.00
AUG-2025	788	142	18.0	624	79.2	23	2.9	0	0.0	0	0.00
SEP-2025	768	140	18.2	607	79.0	22	2.9	0	0.0	0	0.00
OCT-2025	755	137	18.2	599	79.3	20	2.7	0	0.0	0	0.00

n is defined as number of participants on antiretroviral treatment which contains the INGREDIENT;
 % is calculated as ratio of "n" and number of participants whose treatment is of the given antiretroviral drug class
 Ritonavir - greater than 400 mg total daily dose

1.8 Distribution of Participants on Non-Nucleoside Analogue Reverse Transcriptase Inhibitors by INGREDIENT
October 2020 - October 2025

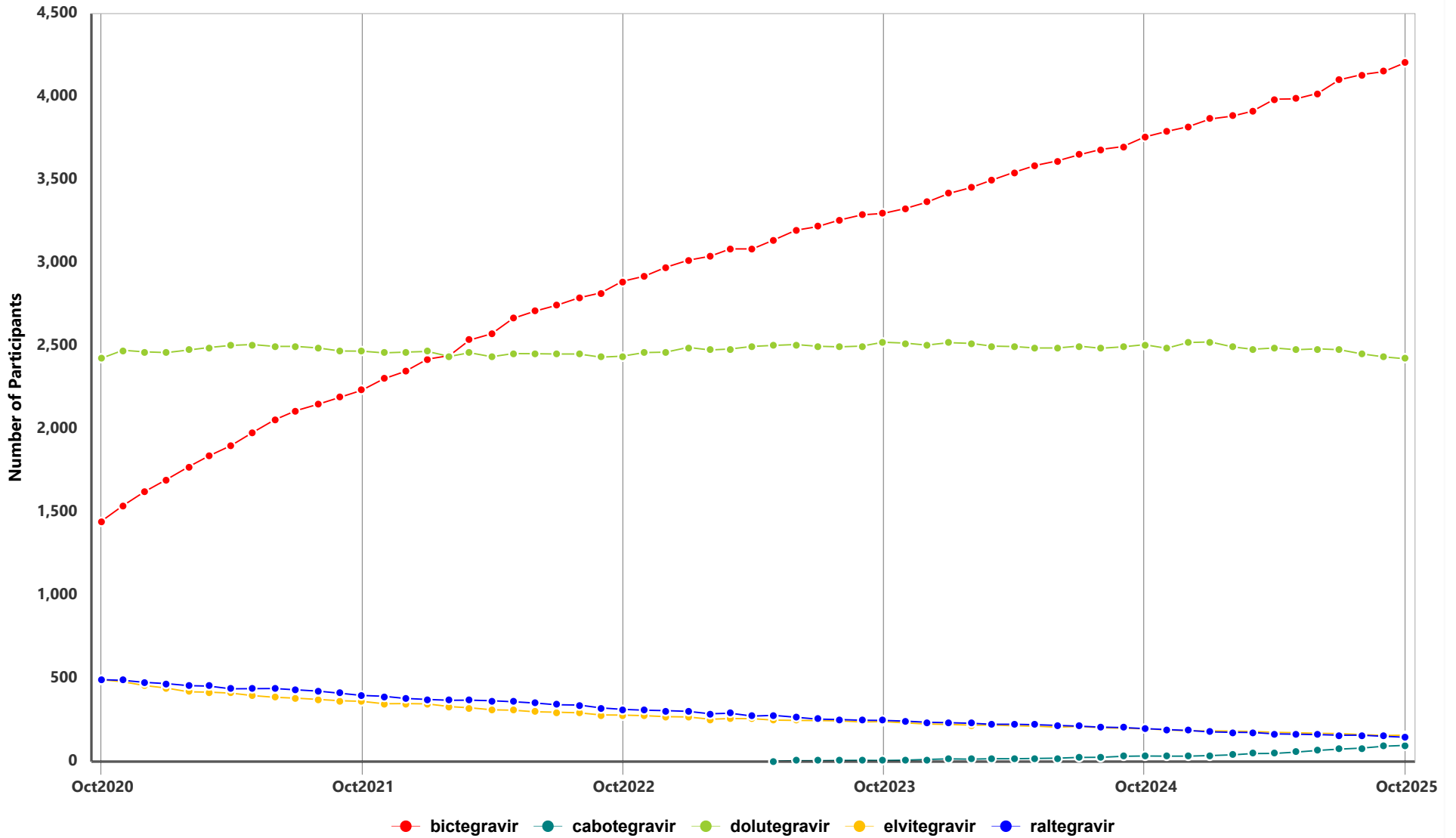


1.9 Number of Participants on Non-Nucleoside Analogue Reverse Transcriptase Inhibitors by INGREDIENT

MON-YYYY	Total Participants	doravirine n %	efavirenz n %	etravirine n %	nevirapine n %	rilpivirine n %
NOV-2023	928	242 26.1	209 22.5	88 9.5	219 23.6	173 18.6
DEC-2023	929	250 26.9	205 22.1	87 9.4	213 22.9	176 19.0
JAN-2024	921	250 27.1	200 21.7	83 9.0	208 22.6	181 19.7
FEB-2024	919	257 28.0	192 20.9	82 8.9	207 22.5	182 19.8
MAR-2024	914	260 28.5	190 20.8	80 8.8	205 22.4	181 19.8
APR-2024	915	261 28.5	190 20.8	82 9.0	203 22.2	180 19.7
MAY-2024	906	262 28.9	186 20.5	80 8.8	205 22.6	175 19.3
JUN-2024	893	262 29.3	182 20.4	79 8.9	198 22.2	172 19.3
JUL-2024	890	270 30.3	176 19.8	78 8.8	194 21.8	172 19.3
AUG-2024	879	272 30.9	174 19.8	78 8.9	187 21.3	171 19.5
SEP-2024	886	275 31.0	172 19.4	76 8.6	185 20.9	179 20.2
OCT-2024	871	283 32.5	168 19.3	72 8.3	177 20.3	175 20.1
NOV-2024	850	287 33.8	162 19.1	70 8.2	159 18.7	173 20.4
DEC-2024	844	303 35.9	156 18.5	71 8.4	149 17.7	167 19.8
JAN-2025	844	309 36.6	157 18.6	67 7.9	143 16.9	172 20.4
FEB-2025	834	306 36.7	156 18.7	64 7.7	136 16.3	173 20.7
MAR-2025	823	311 37.8	147 17.9	62 7.5	132 16.0	173 21.0
APR-2025	818	317 38.8	137 16.8	61 7.5	128 15.7	177 21.6
MAY-2025	809	313 38.7	129 16.0	60 7.4	126 15.6	181 22.4
JUN-2025	812	315 38.8	127 15.6	60 7.4	122 15.0	190 23.4
JUL-2025	809	322 39.8	124 15.3	56 6.9	113 14.0	194 24.0
AUG-2025	805	329 40.9	117 14.5	57 7.1	109 13.5	198 24.6
SEP-2025	806	335 41.6	116 14.4	52 6.5	107 13.3	199 24.7
OCT-2025	808	344 42.6	113 14.0	53 6.6	101 12.5	199 24.6

n is defined as number of participants on antiretroviral treatment which contains the INGREDIENT;
% is calculated as ratio of "n" and number of participants whose treatment is of the given antiretroviral drug class

1.10 Distribution of Participants on Integrase Inhibitors by INGREDIENT
October 2020 - October 2025





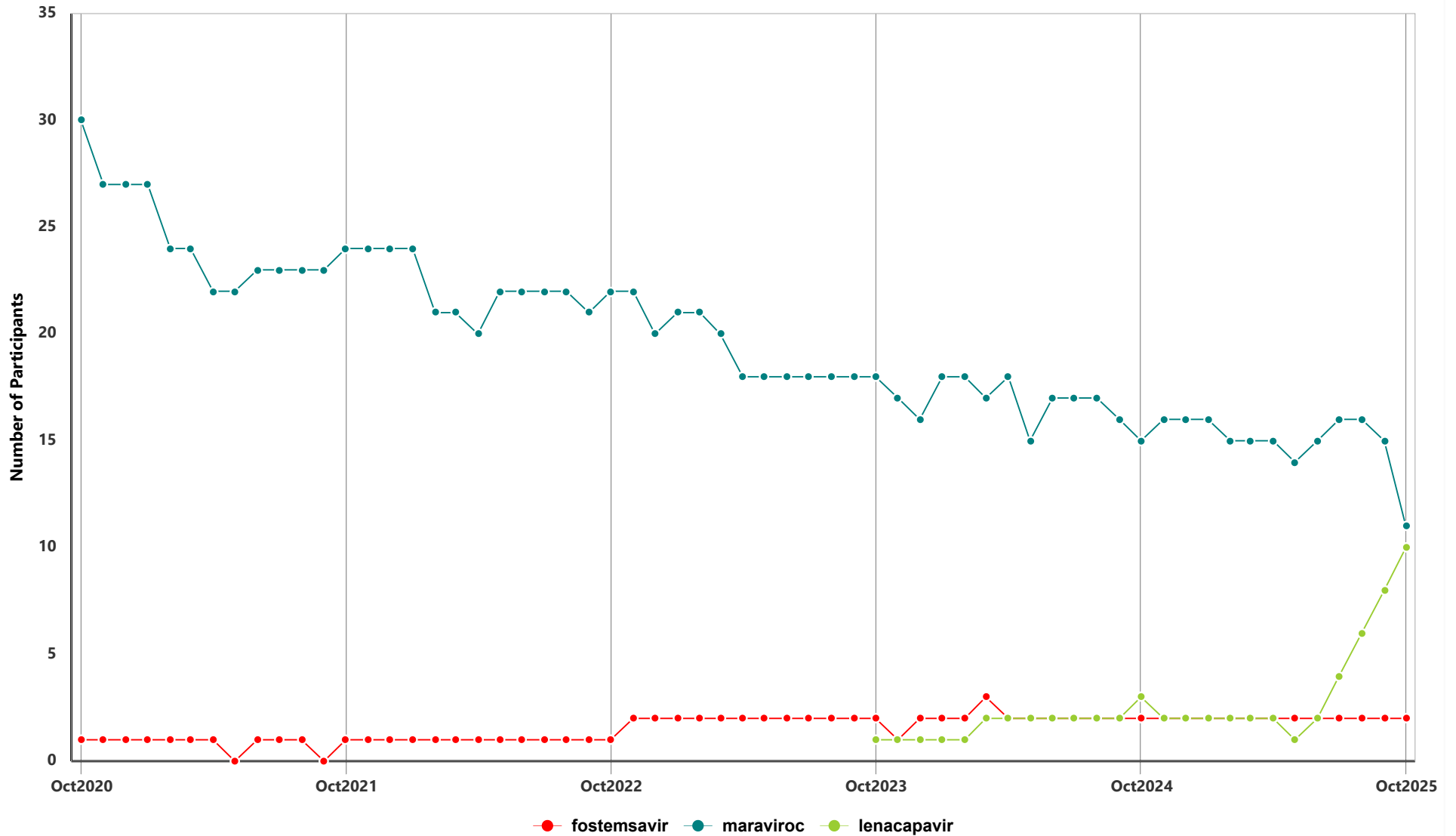
1.11 Number of Participants on Integrase Inhibitors by INGREDIENT

MON-YYYY	Total Participants	bictegravir n %	cabotegravir n %	dolutegravir n %	elvitegravir n %	raltegravir n %
NOV-2023	6311	3327 52.7	9 0.1	2518 39.9	233 3.7	244 3.9
DEC-2023	6330	3365 53.2	13 0.2	2506 39.6	226 3.6	237 3.7
JAN-2024	6389	3418 53.5	16 0.3	2520 39.4	224 3.5	234 3.7
FEB-2024	6417	3453 53.8	15 0.2	2516 39.2	219 3.4	231 3.6
MAR-2024	6435	3498 54.4	17 0.3	2500 38.9	220 3.4	225 3.5
APR-2024	6483	3545 54.7	17 0.3	2497 38.5	216 3.3	225 3.5
MAY-2024	6511	3586 55.1	19 0.3	2488 38.2	213 3.3	222 3.4
JUN-2024	6528	3614 55.4	21 0.3	2488 38.1	207 3.2	218 3.3
JUL-2024	6584	3650 55.4	25 0.4	2500 38.0	212 3.2	213 3.2
AUG-2024	6593	3683 55.9	26 0.4	2487 37.7	204 3.1	207 3.1
SEP-2024	6610	3700 56.0	32 0.5	2495 37.8	200 3.0	205 3.1
OCT-2024	6680	3757 56.2	34 0.5	2508 37.5	198 3.0	199 3.0
NOV-2024	6681	3791 56.7	33 0.5	2487 37.2	191 2.9	193 2.9
DEC-2024	6720	3819 56.8	33 0.5	2521 37.5	185 2.8	187 2.8
JAN-2025	6762	3866 57.2	36 0.5	2525 37.3	185 2.7	179 2.7
FEB-2025	6754	3883 57.5	41 0.6	2495 36.9	183 2.7	176 2.6
MAR-2025	6767	3913 57.8	48 0.7	2481 36.7	181 2.7	175 2.6
APR-2025	6834	3985 58.3	49 0.7	2488 36.4	176 2.6	167 2.4
MAY-2025	6840	3987 58.3	57 0.8	2478 36.2	174 2.5	165 2.4
JUN-2025	6868	4021 58.6	67 1.0	2483 36.2	170 2.5	162 2.4
JUL-2025	6952	4102 59.0	75 1.1	2478 35.6	168 2.4	159 2.3
AUG-2025	6955	4133 59.4	81 1.2	2453 35.3	162 2.3	159 2.3
SEP-2025	6957	4151 59.7	92 1.3	2435 35.0	157 2.3	152 2.2
OCT-2025	7015	4205 59.9	98 1.4	2424 34.6	159 2.3	147 2.1

n is defined as number of participants on antiretroviral treatment which contains the INGREDIENT;
% is calculated as ratio of "n" and number of participants whose treatment is of the given antiretroviral drug class



1.12 Distribution of Participants on Other Antiretroviral Drug Classes by INGREDIENT
October 2020 - October 2025





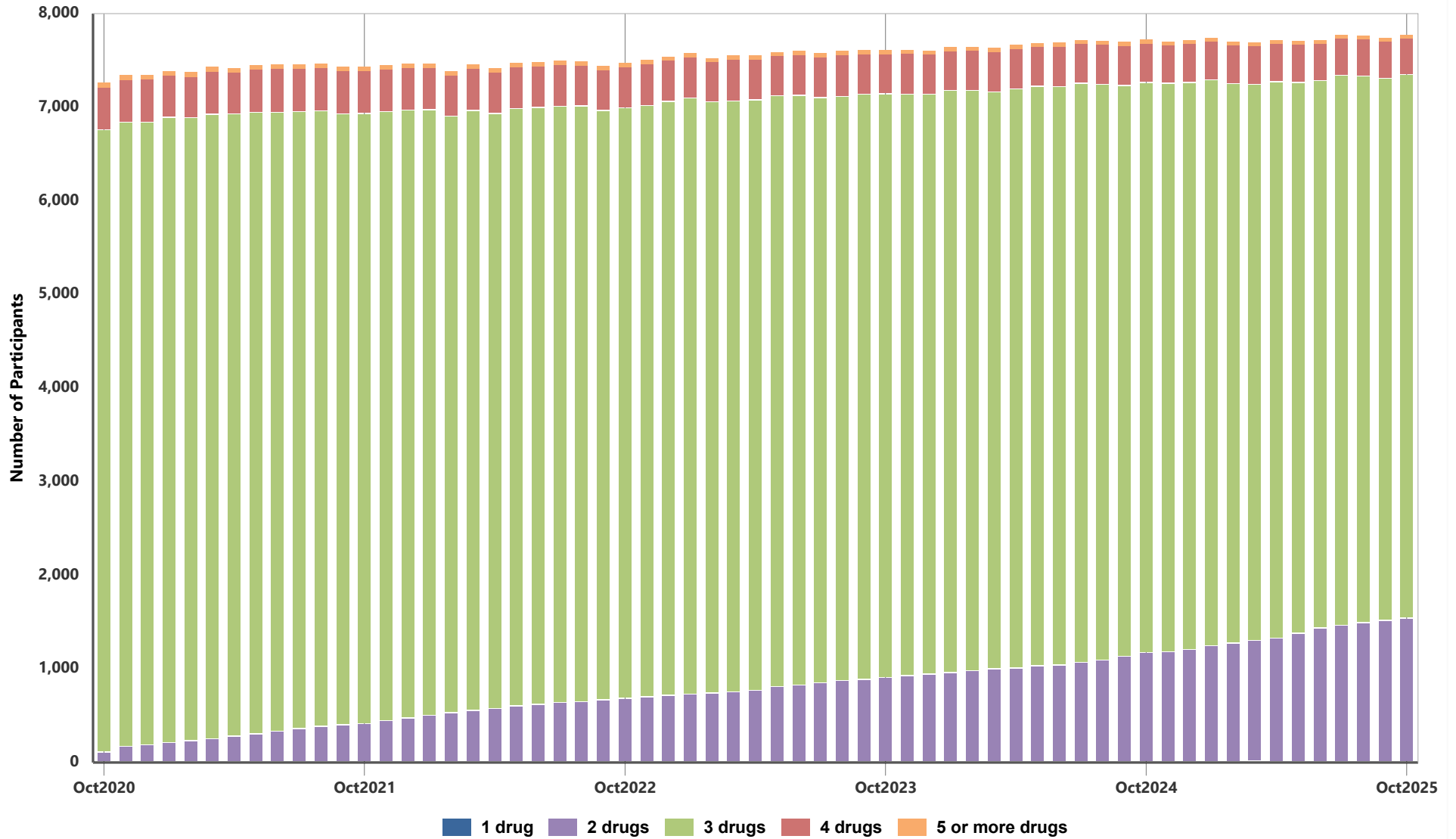
1.13 Number of Participants on Other Antiretroviral Drug Classes by INGREDIENT

MON-YYYY	Total Participants	fostemsavir		maraviroc		lenacapavir	
		n	%	n	%	n	%
NOV-2023	19	1	5.3	17	89.5	1	5.3
DEC-2023	19	2	10.5	16	84.2	1	5.3
JAN-2024	21	2	9.5	18	85.7	1	4.8
FEB-2024	21	2	9.5	18	85.7	1	4.8
MAR-2024	21	3	14.3	17	81.0	2	9.5
APR-2024	22	2	9.1	18	81.8	2	9.1
MAY-2024	19	2	10.5	15	79.0	2	10.5
JUN-2024	21	2	9.5	17	81.0	2	9.5
JUL-2024	21	2	9.5	17	81.0	2	9.5
AUG-2024	21	2	9.5	17	81.0	2	9.5
SEP-2024	20	2	10.0	16	80.0	2	10.0
OCT-2024	20	2	10.0	15	75.0	3	15.0
NOV-2024	20	2	10.0	16	80.0	2	10.0
DEC-2024	20	2	10.0	16	80.0	2	10.0
JAN-2025	20	2	10.0	16	80.0	2	10.0
FEB-2025	19	2	10.5	15	79.0	2	10.5
MAR-2025	19	2	10.5	15	79.0	2	10.5
APR-2025	19	2	10.5	15	79.0	2	10.5
MAY-2025	17	2	11.8	14	82.4	1	5.9
JUN-2025	19	2	10.5	15	79.0	2	10.5
JUL-2025	22	2	9.1	16	72.7	4	18.2
AUG-2025	24	2	8.3	16	66.7	6	25.0
SEP-2025	25	2	8.0	15	60.0	8	32.0
OCT-2025	23	2	8.7	11	47.8	10	43.5

n is defined as number of participants on antiretroviral treatment which contains the INGREDIENT;
 % is calculated as ratio of "n" and number of participants whose treatment is of the given antiretroviral drug class
 Both lenacapavir and fostemsavir are currently not on BC-CfE Formulary



1.14 Distribution of Participants on Antiretroviral Treatment by Number of Antiretrovirals
October 2020 - October 2025



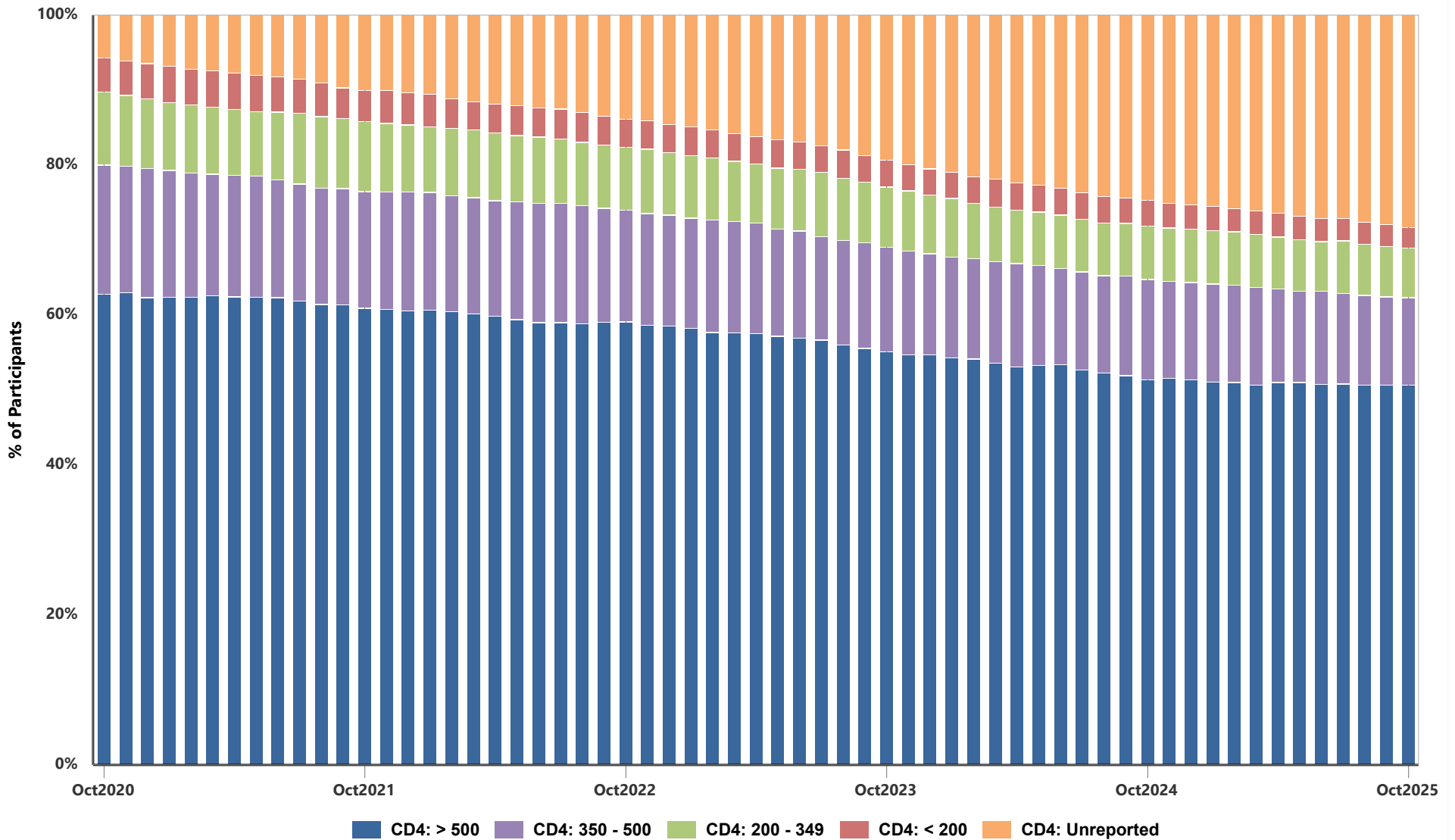
1.15 Distribution of Participants on Antiretroviral Treatment by Number of Antiretrovirals

MON-YYYY	Total Participants	1 drug		2 drugs		3 drugs		4 drugs		5 or more drugs	
		n	%	n	%	n	%	n	%	n	%
NOV-2023	7612	2	0.0	918	12.1	6210	81.6	441	5.8	41	0.5
DEC-2023	7603	2	0.0	936	12.3	6191	81.4	434	5.7	40	0.5
JAN-2024	7642	2	0.0	952	12.5	6214	81.3	432	5.7	42	0.6
FEB-2024	7647	3	0.0	971	12.7	6198	81.1	436	5.7	39	0.5
MAR-2024	7636	2	0.0	991	13.0	6159	80.7	440	5.8	44	0.6
APR-2024	7670	2	0.0	1001	13.1	6184	80.6	437	5.7	46	0.6
MAY-2024	7687	2	0.0	1024	13.3	6188	80.5	434	5.7	39	0.5
JUN-2024	7687	1	0.0	1034	13.5	6181	80.4	429	5.6	42	0.6
JUL-2024	7718	2	0.0	1061	13.8	6184	80.1	434	5.6	37	0.5
AUG-2024	7709	2	0.0	1082	14.0	6155	79.8	431	5.6	39	0.5
SEP-2024	7697	2	0.0	1125	14.6	6101	79.3	426	5.5	43	0.6
OCT-2024	7725	1	0.0	1169	15.1	6087	78.8	427	5.5	41	0.5
NOV-2024	7703	1	0.0	1177	15.3	6069	78.8	417	5.4	39	0.5
DEC-2024	7720	2	0.0	1200	15.5	6054	78.4	424	5.5	40	0.5
JAN-2025	7739	2	0.0	1235	16.0	6047	78.1	416	5.4	39	0.5
FEB-2025	7696	2	0.0	1265	16.4	5977	77.7	414	5.4	38	0.5
MAR-2025	7689	4	0.1	1292	16.8	5942	77.3	414	5.4	37	0.5
APR-2025	7719	3	0.0	1321	17.1	5939	76.9	419	5.4	37	0.5
MAY-2025	7705	4	0.1	1370	17.8	5882	76.3	410	5.3	39	0.5
JUN-2025	7713	4	0.1	1428	18.5	5845	75.8	396	5.1	40	0.5
JUL-2025	7772	2	0.0	1460	18.8	5874	75.6	399	5.1	37	0.5
AUG-2025	7762	5	0.1	1482	19.1	5839	75.2	396	5.1	40	0.5
SEP-2025	7737	3	0.0	1508	19.5	5791	74.9	398	5.1	37	0.5
OCT-2025	7776	2	0.0	1534	19.7	5806	74.7	395	5.1	39	0.5

n is the number of individual drugs in antiretroviral treatment regimen (excluding low dose ritonavir and cobicistat used for pharmacokinetic boosting)



1.16 Percent Distribution of Active Participants by CD4 Count
October 2020 - October 2025





1.17 Distribution of Active Participants by CD4 Count

Month	# of Pts with CD4: Unreported	# of Pts with CD4: < 200	# of Pts with CD4: 200 - 349	# of Pts with CD4: 350 - 500	# of Pts with CD4: > 500
NOV-2023	1353	237	542	937	3689
DEC-2023	1395	237	530	917	3703
JAN-2024	1430	238	529	916	3679
FEB-2024	1469	242	503	911	3673
MAR-2024	1495	255	498	924	3649
APR-2024	1536	253	486	944	3627
MAY-2024	1568	248	486	923	3661
JUN-2024	1602	247	493	886	3680
JUL-2024	1664	248	493	912	3682
AUG-2024	1701	251	491	910	3660
SEP-2024	1718	241	489	935	3639
OCT-2024	1754	243	499	948	3624
NOV-2024	1785	234	505	917	3652
DEC-2024	1813	232	508	928	3658
JAN-2025	1834	233	509	939	3650
FEB-2025	1851	223	511	930	3640
MAR-2025	1874	225	508	934	3620
APR-2025	1908	230	500	902	3667
MAY-2025	1930	229	493	875	3654
JUN-2025	1966	223	477	899	3655
JUL-2025	1987	215	510	883	3696
AUG-2025	2032	217	503	877	3714
SEP-2025	2059	220	492	869	3718
OCT-2025	2115	202	493	871	3758

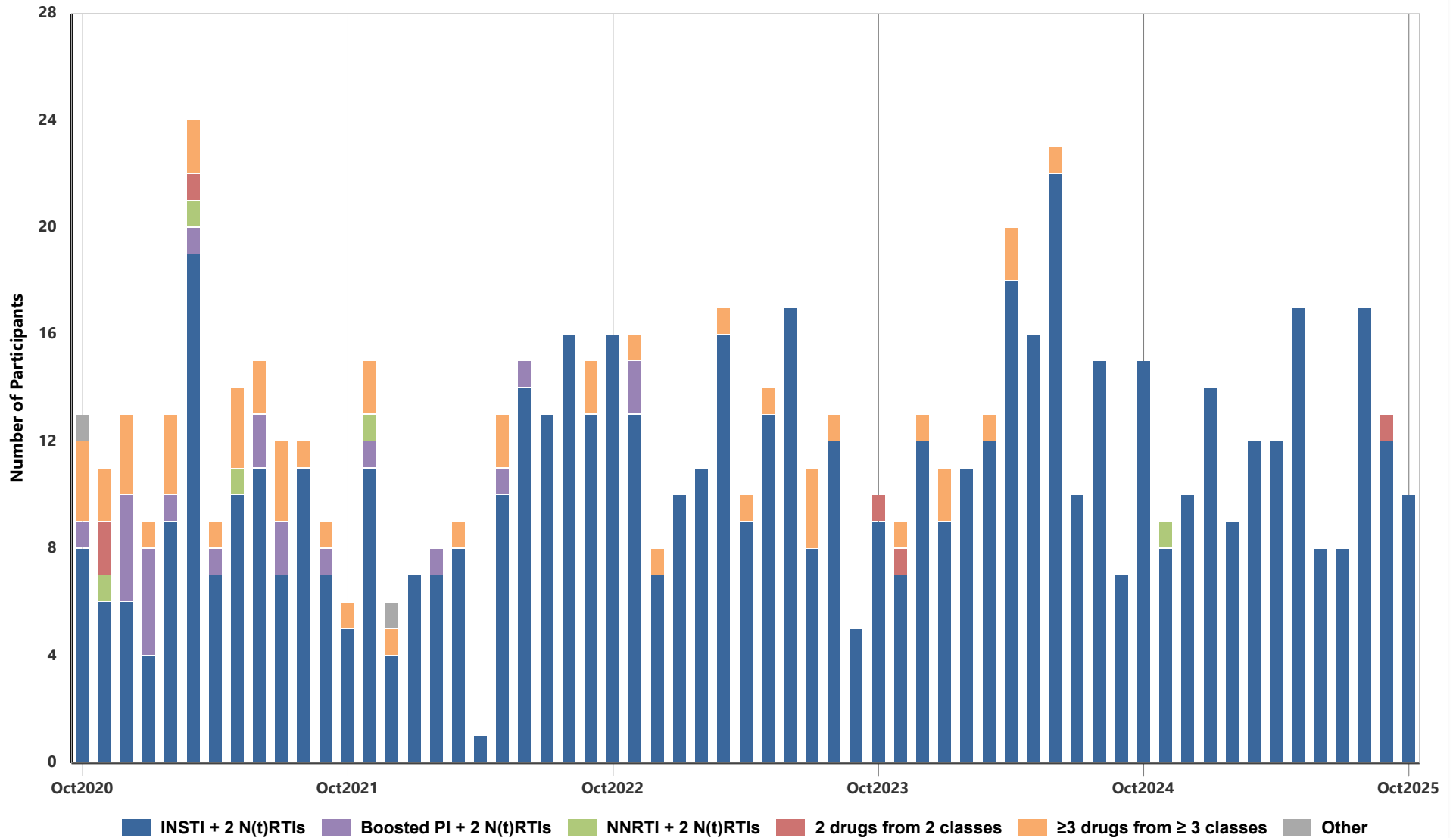
CD4 value (cells/ μ L) as per the most recent test within the past 12 months

CD4 Unreported: CD4 not tested or reported within the past 12 months

Active Participants are participants with antiretroviral treatment in the month based on dispensing record



1.18 Initial Regimen Composition for Antiretroviral Treatment Naïve Participants Starting Treatment
October 2020 - October 2025



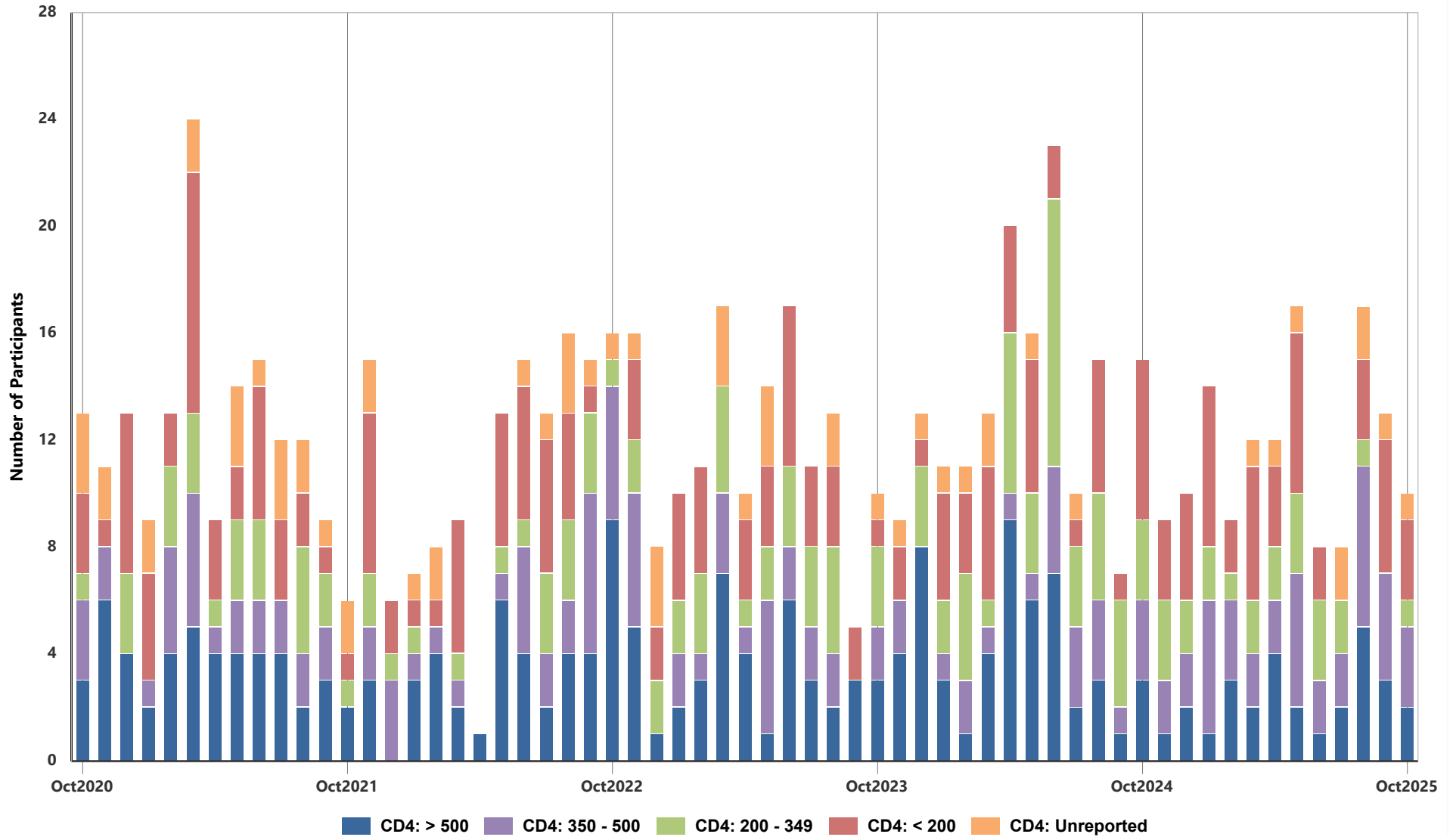
1.19 Initial Regimen Composition for Antiretroviral Treatment Naïve Participants Starting Treatment

MON-YYYY	Total	INSTI 2 N(t)RTIs		Boosted PI 2 N(t)RTIs		NNRTI 2 N(t)RTIs		2 drugs from 2 classes		≥3 drugs from ≥3 classes		Other	
		n	%	n	%	n	%	n	%	n	%	n	%
NOV-2023	9	7	77.8	0	0.0	0	0.0	1	11.1	1	11.1	0	0.0
DEC-2023	13	12	92.3	0	0.0	0	0.0	0	0.0	1	7.7	0	0.0
JAN-2024	11	9	81.8	0	0.0	0	0.0	0	0.0	2	18.2	0	0.0
FEB-2024	11	11	100.0	0	0.0	0	0.0	0	0.0	0	0.0	0	0.0
MAR-2024	13	12	92.3	0	0.0	0	0.0	0	0.0	1	7.7	0	0.0
APR-2024	20	18	90.0	0	0.0	0	0.0	0	0.0	2	10.0	0	0.0
MAY-2024	16	16	100.0	0	0.0	0	0.0	0	0.0	0	0.0	0	0.0
JUN-2024	23	22	95.7	0	0.0	0	0.0	0	0.0	1	4.3	0	0.0
JUL-2024	10	10	100.0	0	0.0	0	0.0	0	0.0	0	0.0	0	0.0
AUG-2024	15	15	100.0	0	0.0	0	0.0	0	0.0	0	0.0	0	0.0
SEP-2024	7	7	100.0	0	0.0	0	0.0	0	0.0	0	0.0	0	0.0
OCT-2024	15	15	100.0	0	0.0	0	0.0	0	0.0	0	0.0	0	0.0
NOV-2024	9	8	88.9	0	0.0	1	11.1	0	0.0	0	0.0	0	0.0
DEC-2024	10	10	100.0	0	0.0	0	0.0	0	0.0	0	0.0	0	0.0
JAN-2025	14	14	100.0	0	0.0	0	0.0	0	0.0	0	0.0	0	0.0
FEB-2025	9	9	100.0	0	0.0	0	0.0	0	0.0	0	0.0	0	0.0
MAR-2025	12	12	100.0	0	0.0	0	0.0	0	0.0	0	0.0	0	0.0
APR-2025	12	12	100.0	0	0.0	0	0.0	0	0.0	0	0.0	0	0.0
MAY-2025	17	17	100.0	0	0.0	0	0.0	0	0.0	0	0.0	0	0.0
JUN-2025	8	8	100.0	0	0.0	0	0.0	0	0.0	0	0.0	0	0.0
JUL-2025	8	8	100.0	0	0.0	0	0.0	0	0.0	0	0.0	0	0.0
AUG-2025	17	17	100.0	0	0.0	0	0.0	0	0.0	0	0.0	0	0.0
SEP-2025	13	12	92.3	0	0.0	0	0.0	1	7.7	0	0.0	0	0.0
OCT-2025	10	10	100.0	0	0.0	0	0.0	0	0.0	0	0.0	0	0.0

INSTI: Integrase Inhibitor, **PI:** Protease Inhibitor, **NNRTI:** Non-Nucleoside Analogue Reverse Transcriptase Inhibitor, **N(t)RTI:** Nucleos(t)ide Analogue Reverse Transcriptase Inhibitor
n is number of participants on the specified regimen category in the specified month
% is ratio of n and total number of participants initiating antiretroviral treatment in the specified month



1.20 Pre-entry CD4 for Antiretroviral Treatment Naïve Participants in the HIV Treatment Program
October 2020 - October 2025

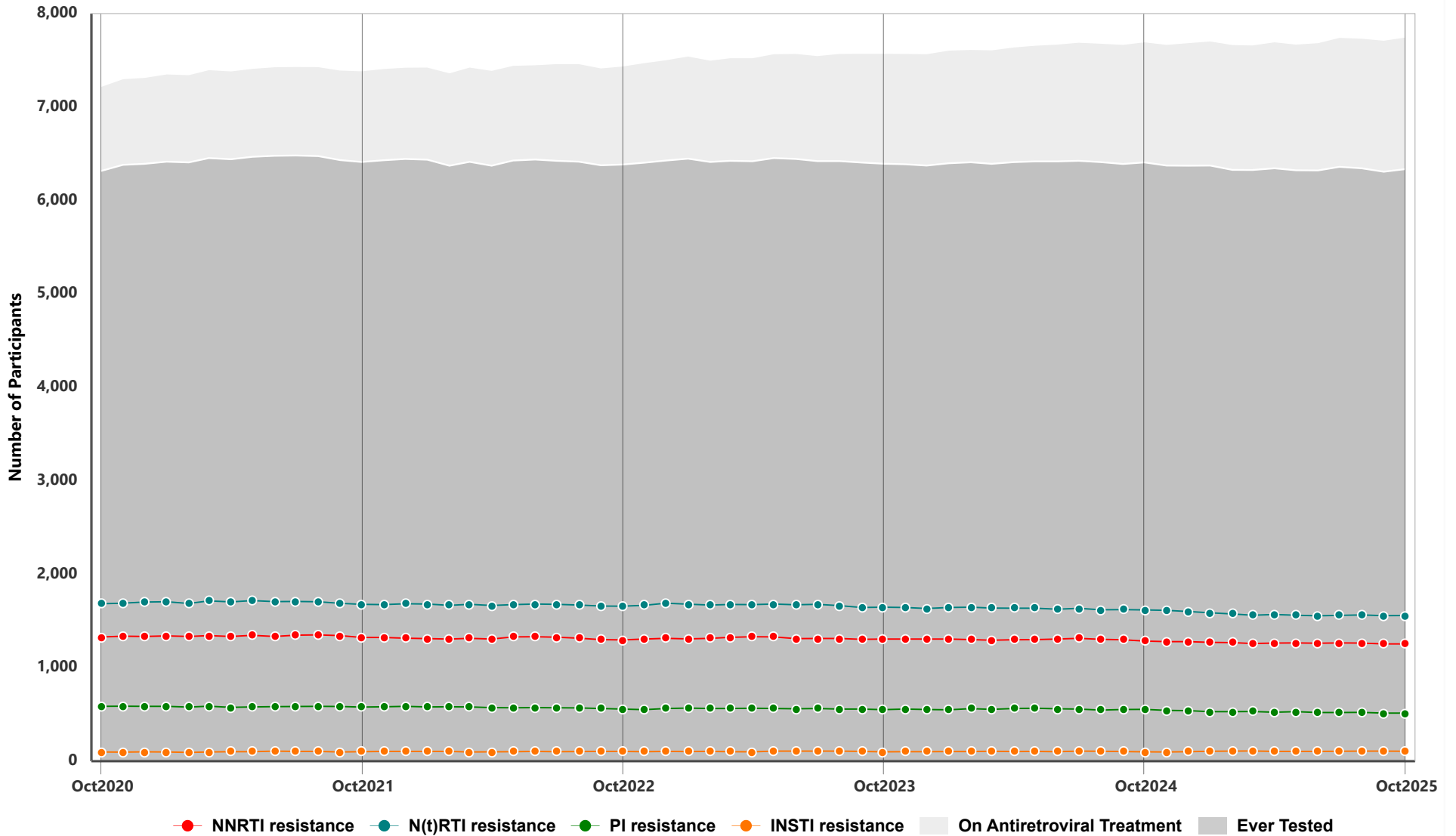


1.21 Pre-entry CD4 for Antiretroviral Treatment Naive Participants in the HIV Treatment Program

MON-YYYY	# of First Starts	# of Pts with CD4: Unreported		# of Pts with CD4: < 200		# of Pts with CD4: 200 - 349		# of Pts with CD4: 350 - 500		# of Pts with CD4: > 500	
		n	%	n	%	n	%	n	%	n	%
NOV-2023	9	1	11.1	2	22.2	0	0.0	2	22.2	4	44.4
DEC-2023	13	1	7.7	1	7.7	3	23.1	0	0.0	8	61.5
JAN-2024	11	1	9.1	4	36.4	2	18.2	1	9.1	3	27.3
FEB-2024	11	1	9.1	3	27.3	4	36.4	2	18.2	1	9.1
MAR-2024	13	2	15.4	5	38.5	1	7.7	1	7.7	4	30.8
APR-2024	20	0	0.0	4	20.0	6	30.0	1	5.0	9	45.0
MAY-2024	16	1	6.3	5	31.3	3	18.8	1	6.3	6	37.5
JUN-2024	23	0	0.0	2	8.7	10	43.5	4	17.4	7	30.4
JUL-2024	10	1	10.0	1	10.0	3	30.0	3	30.0	2	20.0
AUG-2024	15	0	0.0	5	33.3	4	26.7	3	20.0	3	20.0
SEP-2024	7	0	0.0	1	14.3	4	57.1	1	14.3	1	14.3
OCT-2024	15	0	0.0	6	40.0	3	20.0	3	20.0	3	20.0
NOV-2024	9	0	0.0	3	33.3	3	33.3	2	22.2	1	11.1
DEC-2024	10	0	0.0	4	40.0	2	20.0	2	20.0	2	20.0
JAN-2025	14	0	0.0	6	42.9	2	14.3	5	35.7	1	7.1
FEB-2025	9	0	0.0	2	22.2	1	11.1	3	33.3	3	33.3
MAR-2025	12	1	8.3	5	41.7	2	16.7	2	16.7	2	16.7
APR-2025	12	1	8.3	3	25.0	2	16.7	2	16.7	4	33.3
MAY-2025	17	1	5.9	6	35.3	3	17.7	5	29.4	2	11.8
JUN-2025	8	0	0.0	2	25.0	3	37.5	2	25.0	1	12.5
JUL-2025	8	2	25.0	0	0.0	2	25.0	2	25.0	2	25.0
AUG-2025	17	2	11.8	3	17.7	1	5.9	6	35.3	5	29.4
SEP-2025	13	1	7.7	5	38.5	0	0.0	4	30.8	3	23.1
OCT-2025	10	1	10.0	3	30.0	1	10.0	3	30.0	2	20.0

First Starts defined as participants starting antiretroviral treatment in the specified month for the first time (antiretroviral treatment naive)
Pre-entry CD4 (cells/ μ L) is defined as most recent CD4 test before antiretroviral treatment start

1.22 Antiretroviral Resistance by Drug Class Among Participants on Antiretroviral Treatment
October 2020 - October 2025



1.23 Antiretroviral Resistance by Drug Class Among Participants on Antiretroviral Treatment

MON-YYYY	On Antiretroviral (ARV) Treatment	Ever Tested	NNRTI		N(t)RTI		PI		INSTI	
			n	%	n	%	n	%	n	%
NOV-2023	7578	6388	1307	20.5	1644	25.7	558	8.7	102	1.6
DEC-2023	7574	6374	1306	20.5	1634	25.6	553	8.7	101	1.6
JAN-2024	7613	6399	1306	20.4	1645	25.7	549	8.6	103	1.6
FEB-2024	7620	6409	1301	20.3	1647	25.7	562	8.8	103	1.6
MAR-2024	7616	6393	1294	20.2	1638	25.6	555	8.7	106	1.7
APR-2024	7647	6411	1299	20.3	1637	25.5	563	8.8	103	1.6
MAY-2024	7666	6419	1301	20.3	1637	25.5	566	8.8	104	1.6
JUN-2024	7678	6419	1306	20.4	1626	25.3	560	8.7	102	1.6
JUL-2024	7697	6425	1315	20.5	1636	25.5	557	8.7	108	1.7
AUG-2024	7686	6410	1304	20.3	1620	25.3	547	8.5	106	1.7
SEP-2024	7674	6391	1299	20.3	1622	25.4	553	8.7	103	1.6
OCT-2024	7702	6408	1285	20.1	1618	25.3	555	8.7	100	1.6
NOV-2024	7674	6374	1279	20.1	1614	25.3	544	8.5	98	1.5
DEC-2024	7693	6373	1279	20.1	1601	25.1	541	8.5	102	1.6
JAN-2025	7712	6374	1272	20.0	1588	24.9	529	8.3	106	1.7
FEB-2025	7673	6328	1268	20.0	1575	24.9	530	8.4	107	1.7
MAR-2025	7668	6327	1259	19.9	1561	24.7	531	8.4	109	1.7
APR-2025	7702	6345	1263	19.9	1569	24.7	524	8.3	105	1.7
MAY-2025	7677	6323	1265	20.0	1562	24.7	529	8.4	105	1.7
JUN-2025	7693	6322	1262	20.0	1555	24.6	521	8.2	105	1.7
JUL-2025	7750	6360	1265	19.9	1560	24.5	520	8.2	106	1.7
AUG-2025	7740	6344	1264	19.9	1564	24.7	522	8.2	108	1.7
SEP-2025	7719	6308	1254	19.9	1557	24.7	515	8.2	107	1.7
OCT-2025	7753	6335	1255	19.8	1558	24.6	514	8.1	106	1.7

On Antiretroviral (ARV) Treatment: based on dispensing data, participants with a record of ARV medication in the specified month and not deceased or moved out of program.

Ever Tested: those on ARV treatment, with at least one ARV resistance test on record in BC, up until the month of interest.

n: number of participants on ARV treatment who were ever tested for ARV resistance with drug resistance to ≥ 1 drug in the corresponding drug class in BC. Participants may have resistance to none or 1 or more drug class(es).

% is calculated as ratio of "n" and number of participants on ARV treatment who were ever tested for ARV resistance with drug resistance to ≥ 1 drug the corresponding drug class in BC.

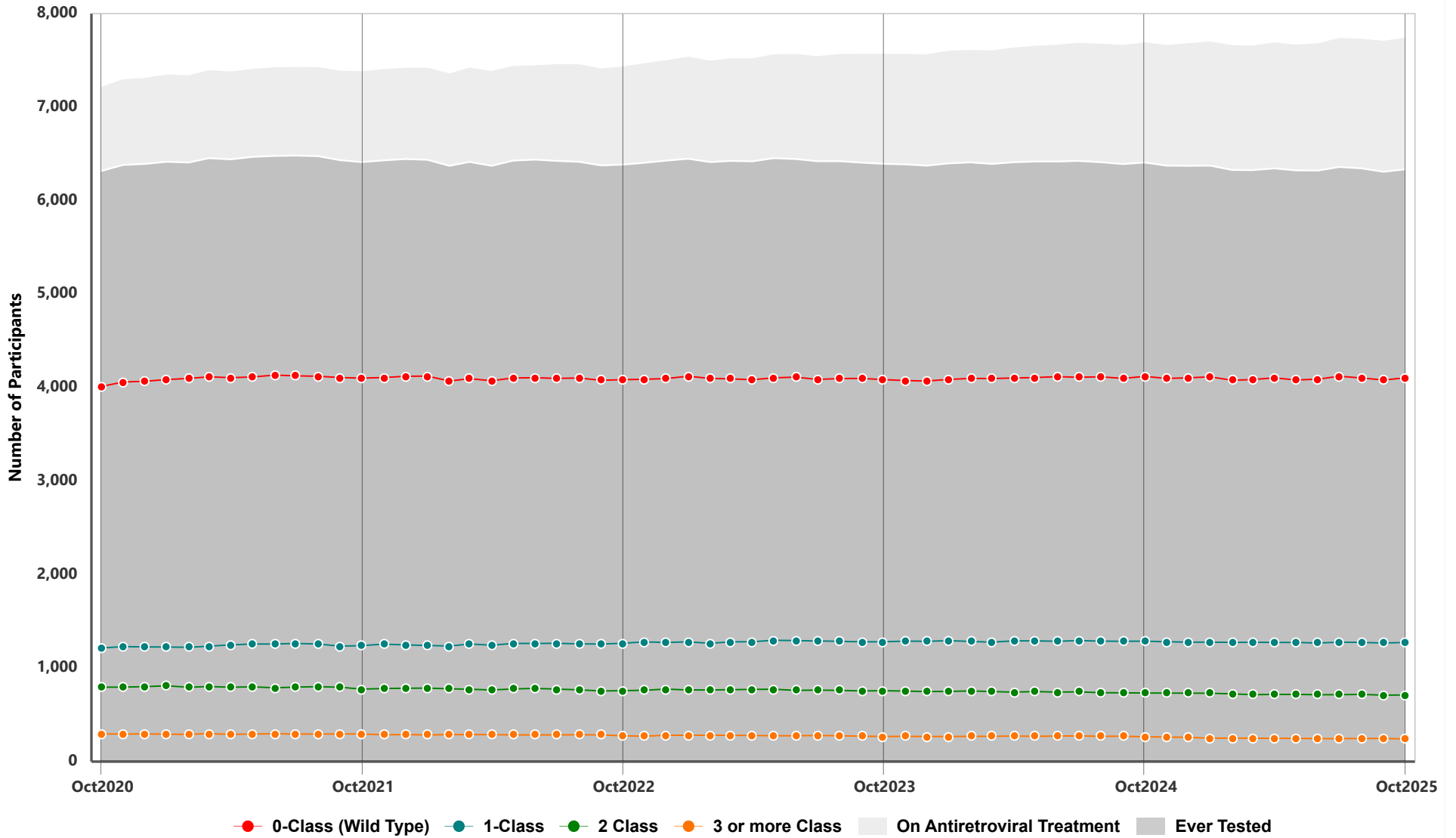
Resistance interpretations are performed using the Stanford University HIV Drug Resistance Database Algorithm (HIVdb) version 9.8. HIVdb scores ≥ 15 are classified as "resistant".

INSTI: Integrase Inhibitor, **PI:** Protease Inhibitor, **NNRTI:** Non-Nucleoside Analogue Reverse Transcriptase Inhibitor,

N(t)RTI: Nucleos(t)ide Analogue Reverse Transcriptase Inhibitor



1.24 Active Participants by number of Antiretroviral Drug Classes with Resistance
October 2020 - October 2025



1.25 Active Participants by number of Antiretroviral Drug Classes with Resistance

MON-YYYY	On Antiretroviral Treatment	Ever Tested	0-Class (Wild Type)		1-Class		2-Class		3 or more Class	
			n	%	n	%	n	%	n	%
NOV-2023	7578	6388	4076	63.8	1288	20.2	754	11.8	270	4.2
DEC-2023	7574	6374	4070	63.9	1287	20.2	749	11.8	268	4.2
JAN-2024	7613	6399	4087	63.9	1293	20.2	751	11.7	268	4.2
FEB-2024	7620	6409	4098	63.9	1285	20.1	755	11.8	271	4.2
MAR-2024	7616	6393	4096	64.1	1277	20.0	749	11.7	271	4.2
APR-2024	7647	6411	4103	64.0	1292	20.2	743	11.6	273	4.3
MAY-2024	7666	6419	4107	64.0	1292	20.1	749	11.7	271	4.2
JUN-2024	7678	6419	4117	64.1	1286	20.0	743	11.6	273	4.3
JUL-2024	7697	6425	4110	64.0	1294	20.1	746	11.6	275	4.3
AUG-2024	7686	6410	4115	64.2	1288	20.1	737	11.5	270	4.2
SEP-2024	7674	6391	4098	64.1	1286	20.1	735	11.5	272	4.3
OCT-2024	7702	6408	4120	64.3	1288	20.1	734	11.5	266	4.2
NOV-2024	7674	6374	4098	64.3	1282	20.1	732	11.5	262	4.1
DEC-2024	7693	6373	4104	64.4	1277	20.0	733	11.5	259	4.1
JAN-2025	7712	6374	4115	64.6	1277	20.0	731	11.5	251	3.9
FEB-2025	7673	6328	4078	64.4	1274	20.1	724	11.4	252	4.0
MAR-2025	7668	6327	4086	64.6	1276	20.2	715	11.3	250	4.0
APR-2025	7702	6345	4104	64.7	1274	20.1	718	11.3	249	3.9
MAY-2025	7677	6323	4082	64.6	1274	20.2	718	11.4	249	3.9
JUN-2025	7693	6322	4091	64.7	1269	20.1	716	11.3	246	3.9
JUL-2025	7750	6360	4121	64.8	1277	20.1	716	11.3	246	3.9
AUG-2025	7740	6344	4103	64.7	1275	20.1	719	11.3	247	3.9
SEP-2025	7719	6308	4082	64.7	1268	20.1	711	11.3	247	3.9
OCT-2025	7753	6335	4105	64.8	1274	20.1	713	11.3	243	3.8

Number of Antiretroviral (ARV) Drug Classes with Resistance considers N(t)RTIs, NNRTIs, PIs, and INSTIs only, based on cumulative resistance tests performed in BC (until the specified month) for participants ever tested (see definition below).

Resistance interpretations are performed using the Stanford University HIV Drug Resistance Database Algorithm (HIVdb) version 9.8.

HIVdb scores ≥ 15 are classified as "resistant".

On Antiretroviral Treatment: based on dispensing data, participants with a record of ARV medication in the specified month and not deceased or moved out of program.

Ever tested: those on ARV treatment, with at least one ARV resistance test on record in BC, up until the specified month.





2.1 Active participants by Year of Program Initiation (1987 - 2025) - as of October 2025

DTP Start Year	Duration (years) Median	First Starts	All	Male	Female	Age		(n)	CD4 (cells/ μ L)		(n)	pVL (copies/mL)	
						Median	(Q1, Q3)		Median	(Q1, Q3)		Median	(Q1, Q3)
Pre-1993	31	48	185	176	9	34	(30, 39)	94	540	(390, 730)	173	<40	(<40, <40)
1993	30	121	122	108	14	34	(29, 39)	72	610	(410, 783)	117	<40	(<40, <40)
1994	29	70	70	58	12	34	(29, 37)	48	665	(433, 953)	61	<40	(<40, <40)
1995	29	121	122	103	19	34	(29, 39)	71	630	(465, 785)	114	<40	(<40, <40)
1996	27	305	307	267	40	35	(30, 39)	178	620	(433, 850)	280	<40	(<40, <40)
1997	24	261	267	241	26	34	(30, 38)	164	610	(390, 850)	238	<40	(<40, <40)
1998	24	188	197	160	37	34	(30, 40)	132	580	(420, 765)	175	<40	(<40, <40)
1999	24	161	162	126	36	36	(31, 42)	109	590	(390, 790)	148	<40	(<40, <40)
2000	24	117	120	98	22	38	(33, 44)	74	690	(480, 808)	108	<40	(<40, <40)
2001	23	122	124	99	25	37	(32, 44)	77	590	(400, 780)	110	<40	(<40, <40)
2002	23	115	125	106	19	40	(30, 46)	81	590	(440, 760)	117	<40	(<40, <40)
2003	22	139	149	129	20	39	(34, 45)	96	610	(425, 785)	135	<40	(<40, <40)
2004	21	139	161	126	35	39	(34, 44)	108	660	(438, 840)	146	<40	(<40, <40)
2005	20	176	193	154	39	40	(35, 47)	134	625	(470, 850)	172	<40	(<40, <40)
2006	19	173	193	155	38	41	(33, 47)	135	600	(444, 855)	178	<40	(<40, <40)
2007	18	235	254	218	36	41	(35, 46)	171	670	(460, 860)	222	<40	(<40, <40)
2008	17	270	303	250	53	42	(35, 49)	218	670	(480, 875)	274	<40	(<40, <40)
2009	16	294	326	267	59	41	(34, 47)	214	680	(473, 920)	298	<40	(<40, <40)
2010	15	254	293	233	60	40	(32, 45)	195	660	(506, 850)	261	<40	(<40, <40)
2011	14	310	355	288	67	41	(33, 48)	229	710	(500, 920)	320	<40	(<40, <40)
2012	13	277	317	257	60	40	(32, 49)	205	720	(530, 950)	282	<40	(<40, <40)
2013	12	248	295	233	62	40	(32, 48)	193	670	(497, 920)	260	<40	(<40, <40)
2014	11	227	293	250	43	39	(31, 50)	190	765	(560, 990)	252	<40	(<40, <40)
2015	10	193	275	233	42	41	(32, 51)	180	710	(518, 933)	246	<40	(<40, <40)
2016	9	181	254	208	46	39	(32, 49)	179	700	(480, 920)	224	<40	(<40, <40)
2017	8	156	223	191	32	36	(29, 45)	150	680	(533, 928)	201	<40	(<40, <40)
2018	7	131	201	163	38	40	(31, 48)	137	800	(560, 960)	175	<40	(<40, <40)
2019	6	125	241	199	42	38	(29, 47)	181	740	(530, 920)	211	<40	(<40, <40)
2020	5	97	192	145	47	37	(31, 49)	148	740	(549, 963)	171	<40	(<40, <40)

Duration defined as cumulative years on antiretroviral treatment, excluding periods of treatment interruption
CD4 and pVL tests defined as most recent test done in the last 12 months and last 6 months, respectively





2.1 Active participants by Year of Program Initiation (1987 - 2025) - as of October 2025 (cont.)

DTP Start Year	Duration (years) Median	First Starts	All	Male	Female	Age		(n)	CD4 (cells/ μ L)		(n)	pVL (copies/mL)	
						Median	(Q1, Q3)		Median	(Q1, Q3)		Median	(Q1, Q3)
2021	4	111	201	169	32	38	(30, 47)	171	650	(460, 860)	141	<40	(<40, <40)
2022	3	107	269	222	47	38	(31, 47)	242	720	(540, 935)	203	<40	(<40, <40)
2023	2	114	311	254	57	35	(30, 45)	283	640	(479, 840)	240	<40	(<40, <40)
2024	1	135	343	277	66	36	(29, 45)	319	620	(450, 820)	285	<40	(<40, <40)
2025	0	112	310	237	73	36	(30, 45)	295	579	(378, 781)	292	<40	(<40, <40)
Total:		5833	7753	6400	1353								

Duration defined as cumulative years on antiretroviral treatment, excluding periods of treatment interruption
CD4 and pVL tests defined as most recent test done in the last 12 months and last 6 months, respectively





2.2 HIV Viral Load (copies/mL) and CD4 (cells/ μ L) for Participants on Antiretroviral Treatment

MON-YYYY	Total Participants	Median # of Treatment days	(n)	CD4 (cells/ μ L)		(n)	pVL (copies/mL)	
				Median	(Q1, Q3)		Median	(Q1, Q3)
NOV-2023	7612	795	5405	640	(450, 860)	6841	<40	(<40, <40)
DEC-2023	7603	798	5387	650	(460, 860)	6829	<40	(<40, <40)
JAN-2024	7642	792	5362	640	(460, 860)	6815	<40	(<40, <40)
FEB-2024	7647	781	5329	650	(460, 870)	6865	<40	(<40, <40)
MAR-2024	7636	790	5326	640	(450, 870)	6872	<40	(<40, <40)
APR-2024	7670	786	5310	640	(450, 870)	6843	<40	(<40, <40)
MAY-2024	7687	787	5318	650	(460, 880)	6897	<40	(<40, <40)
JUN-2024	7687	784	5306	650	(460, 870)	6922	<40	(<40, <40)
JUL-2024	7718	786	5335	650	(460, 870)	7010	<40	(<40, <40)
AUG-2024	7709	782	5312	650	(460, 873)	6938	<40	(<40, <40)
SEP-2024	7697	791	5304	650	(460, 870)	6905	<40	(<40, <40)
OCT-2024	7725	787	5314	650	(460, 870)	6899	<40	(<40, <40)
NOV-2024	7703	793	5308	650	(460, 880)	6876	<40	(<40, <40)
DEC-2024	7720	796	5326	650	(460, 880)	6914	<40	(<40, <40)
JAN-2025	7739	792	5331	650	(450, 880)	6883	<40	(<40, <40)
FEB-2025	7696	800	5304	650	(460, 880)	6871	<40	(<40, <40)
MAR-2025	7689	792	5287	650	(450, 875)	6813	<40	(<40, <40)
APR-2025	7719	779	5299	660	(460, 880)	6891	<40	(<40, <40)
MAY-2025	7705	787	5251	660	(460, 880)	6861	<40	(<40, <40)
JUN-2025	7713	785	5254	660	(460, 880)	6835	<40	(<40, <40)
JUL-2025	7772	773	5304	652	(460, 870)	6914	<40	(<40, <40)
AUG-2025	7762	780	5311	660	(460, 861)	6943	<40	(<40, <40)
SEP-2025	7737	792	5299	660	(460, 860)	6935	<40	(<40, <40)
OCT-2025	7776	784	5324	660	(470, 870)	6963	<40	(<40, <40)

Active participant defined as being on antiretroviral treatment in the specified month

Treatment days defined as number of consecutive days on antiretroviral treatment (most recent uninterrupted period)

CD4 and pVL tests defined as tests done in the specified month



2.3 BC-CfE HIV Treatment Program Enrolment

MON-YYYY	On ARV Treatment	Off ARV Treatment	Deceased	ARV Treatment naïve starts	ARV Treatment experienced starts	Newly interrupted ARV Treatment	Net Change
NOV-2023	7578	732	18	9	182	171	-1
DEC-2023	7574	741	14	13	169	169	-4
JAN-2024	7613	699	16	11	204	159	39
FEB-2024	7620	696	17	11	184	165	7
MAR-2024	7616	710	12	13	183	185	-4
APR-2024	7647	693	17	20	197	168	31
MAY-2024	7666	692	12	16	191	173	19
JUN-2024	7678	707	5	23	173	177	12
JUL-2024	7697	696	15	10	185	159	19
AUG-2024	7686	711	13	15	164	168	-11
SEP-2024	7674	717	9	7	182	186	-12
OCT-2024	7702	710	8	15	200	172	28
NOV-2024	7674	747	14	9	181	199	-28
DEC-2024	7693	744	15	10	194	170	19
JAN-2025	7712	717	14	14	196	170	19
FEB-2025	7673	760	10	9	166	201	-39
MAR-2025	7668	760	12	12	175	177	-5
APR-2025	7702	737	9	12	193	157	34
MAY-2025	7677	758	18	17	167	188	-25
JUN-2025	7693	737	12	8	175	150	16
JUL-2025	7750	697	8	8	203	141	57
AUG-2025	7740	716	11	17	148	163	-10
SEP-2025	7719	768	6	13	189	213	-21
OCT-2025	7753	740	13	10	208	168	34

ARV: antiretroviral

On ARV Treatment: based on dispensing data, participants with a record of ARV medication in the specified month and not deceased or moved out of program

Off ARV Treatment: based on dispensing data, participants with no record of ARV medication in the specified month and not deceased or moved out of program

Deceased: in the specified month, and on ARV treatment in the previous month

ARV Treatment naïve starts: participants starting ARV treatment in the specified month for the first time

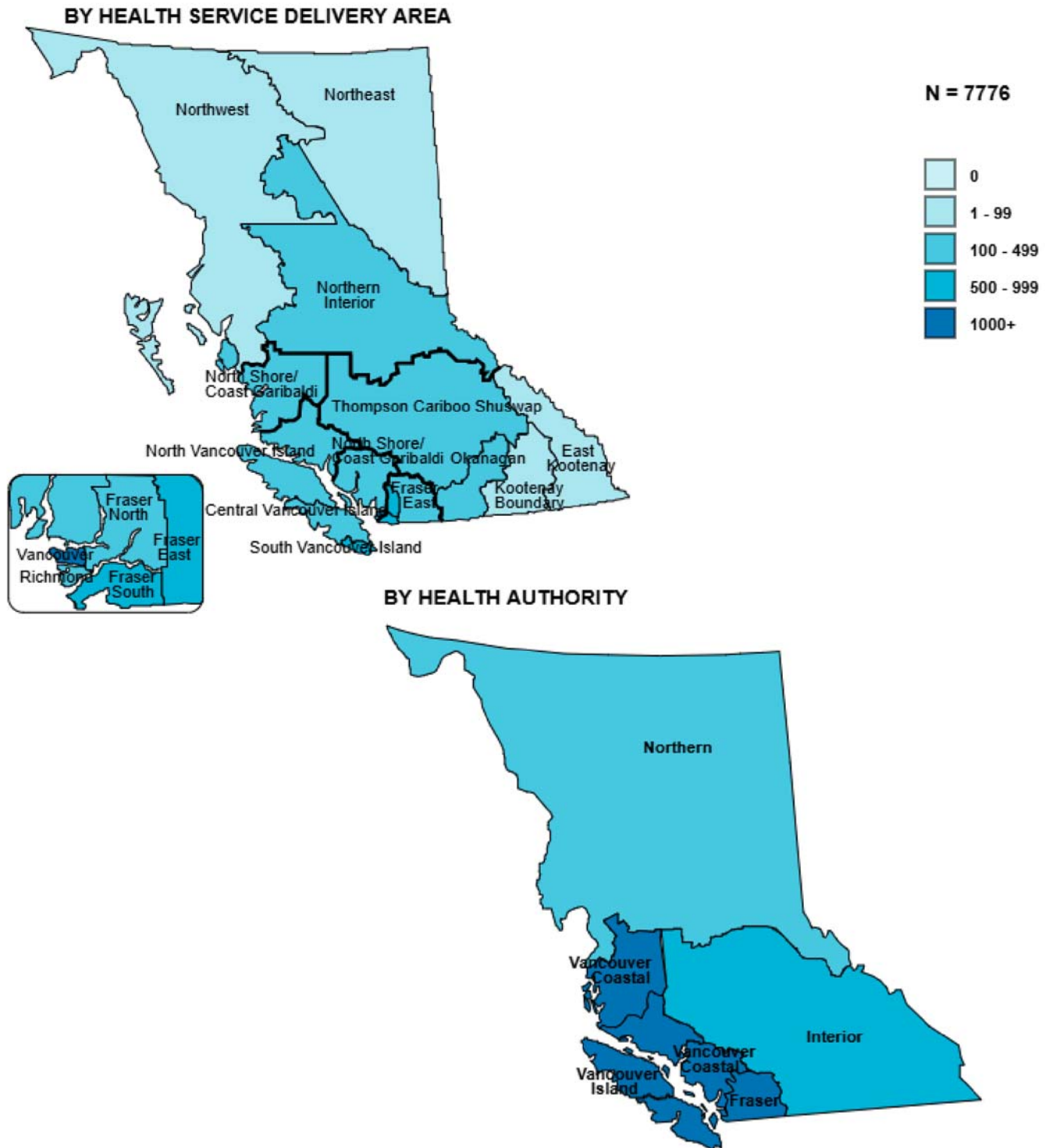
ARV Treatment experienced starts: participants with history of ARV treatment, but first dispensing in the BC HIV Treatment Program in the specified month

Newly Interrupted ARV Treatment: based on dispensing data, participants with no record of ARV medication in the specified month, but had a record of ARV medication in the previous month, and not deceased or moved out of program, and had contact with the program in the past 5 years.

Net Change: the difference between ARV treatment starts (naïve and experienced) and ARV treatment stops (Deceased, moved out of program, or newly interrupted ARV treatment)



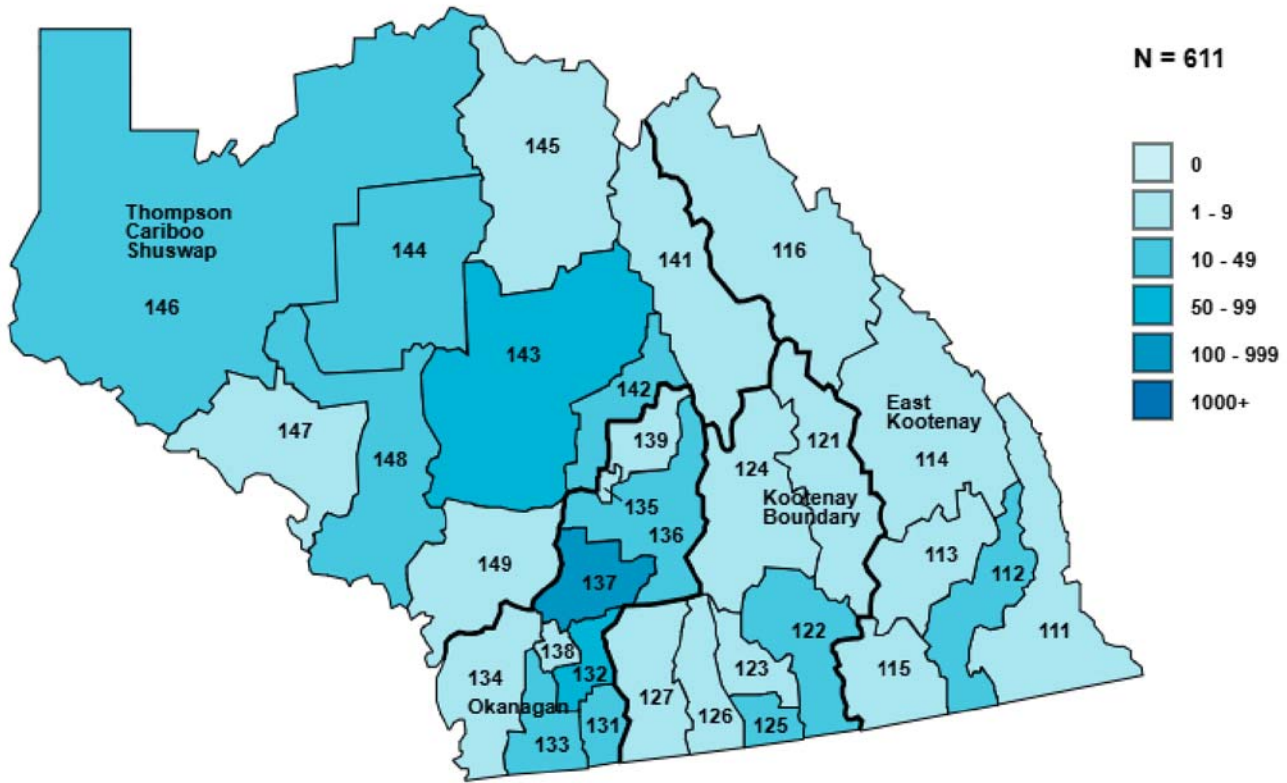
3.1 Distribution of HIV Treatment Program Active Participants
October 2025



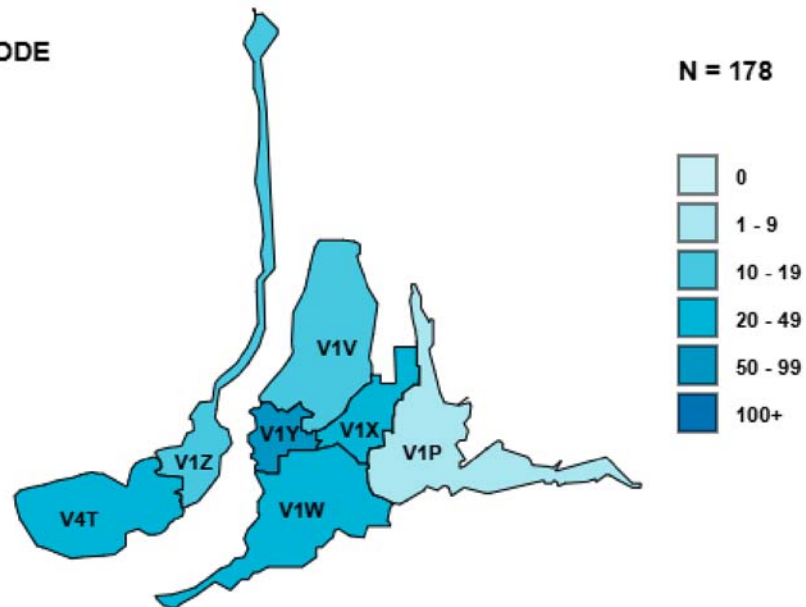


3.2 Distribution of HIV Treatment Program Active Participants
October 2025

INTERIOR HEALTH AUTHORITY BY HEALTH SERVICE DELIVERY AREA/LOCAL HEALTH AREA



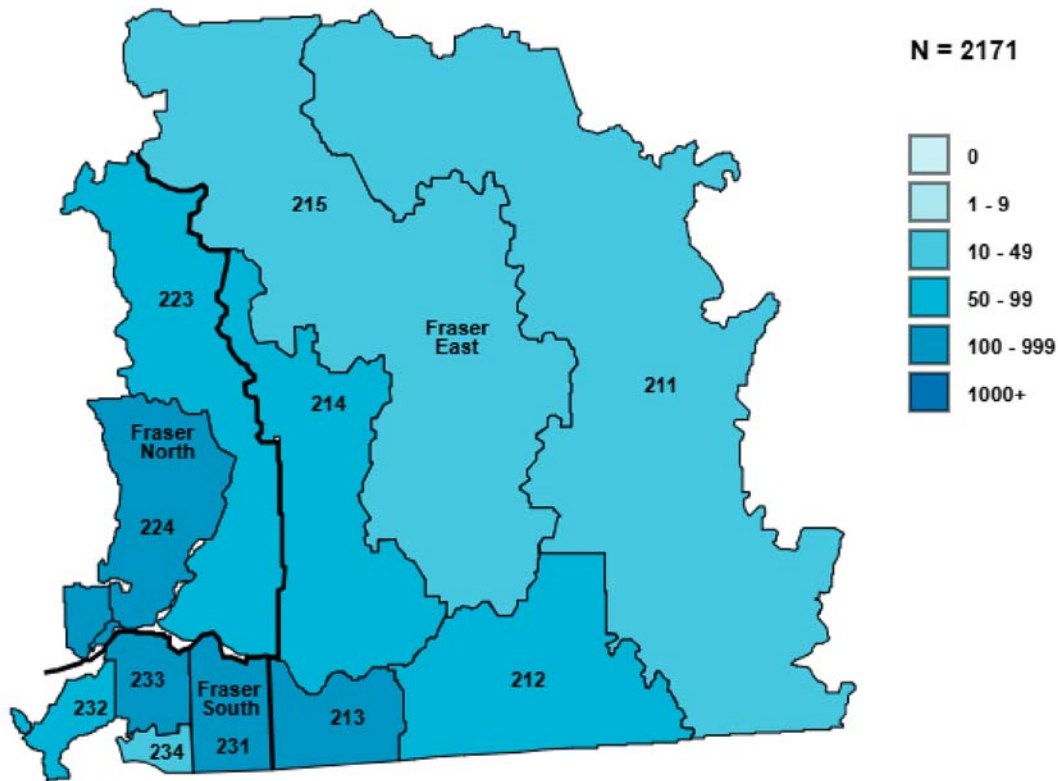
KELOWNA BY POSTAL CODE



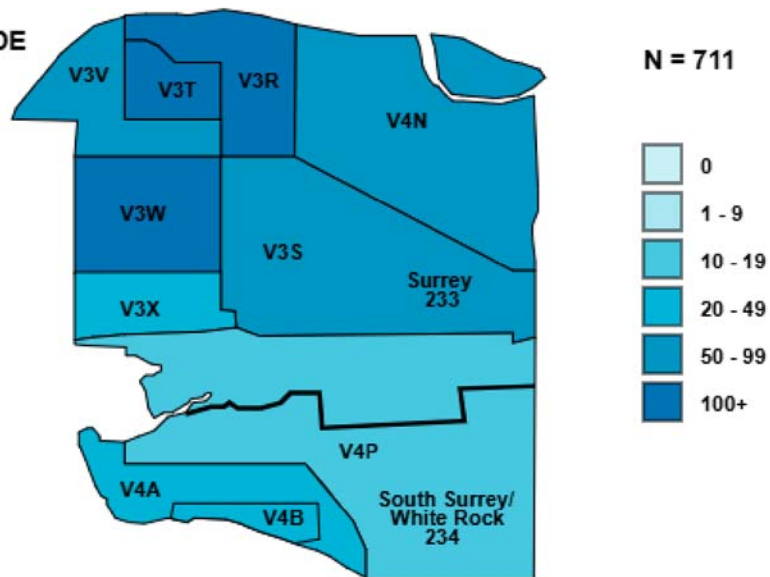


3.3 Distribution of HIV Treatment Program Active Participants October 2025

FRASER HEALTH AUTHORITY BY HEALTH SERVICE DELIVERY AREA/LOCAL HEALTH AREA

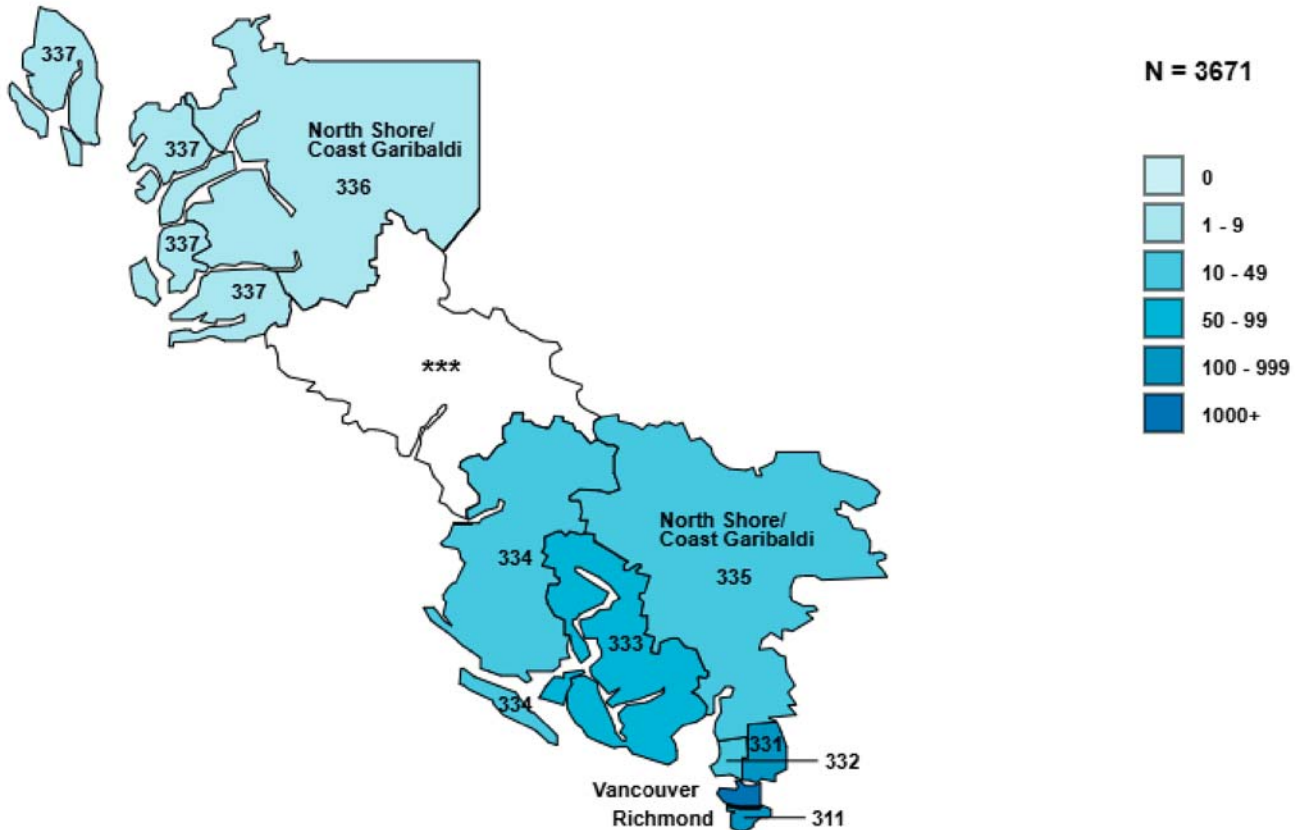


SURREY BY POSTAL CODE

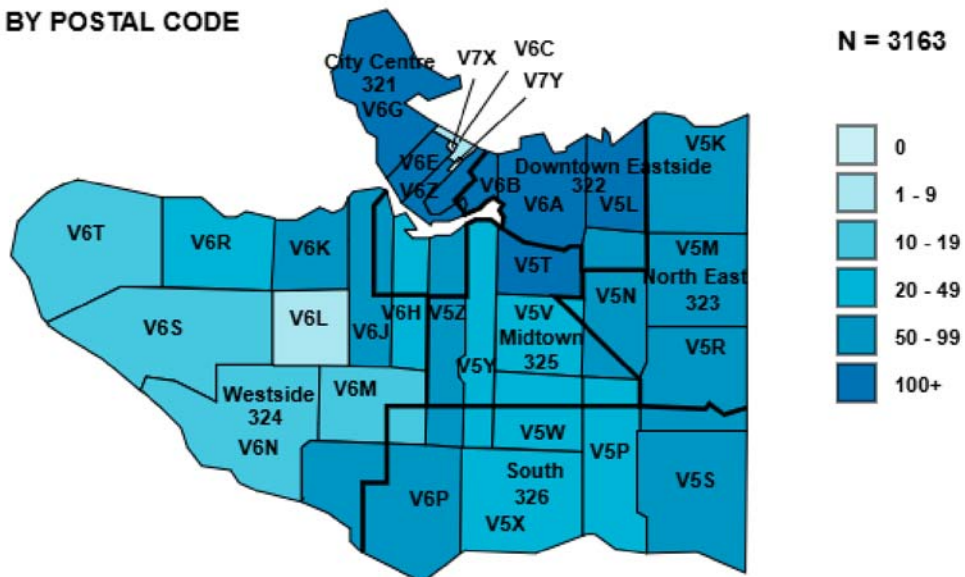


3.4 Distribution of HIV Treatment Program Active Participants
October 2025

VANCOUVER COASTAL HEALTH AUTHORITY BY HEALTH SERVICE DELIVERY AREA/LOCAL HEALTH AREA



VANCOUVER BY POSTAL CODE



*** Please refer to VIHA (432 and 434) on the next page

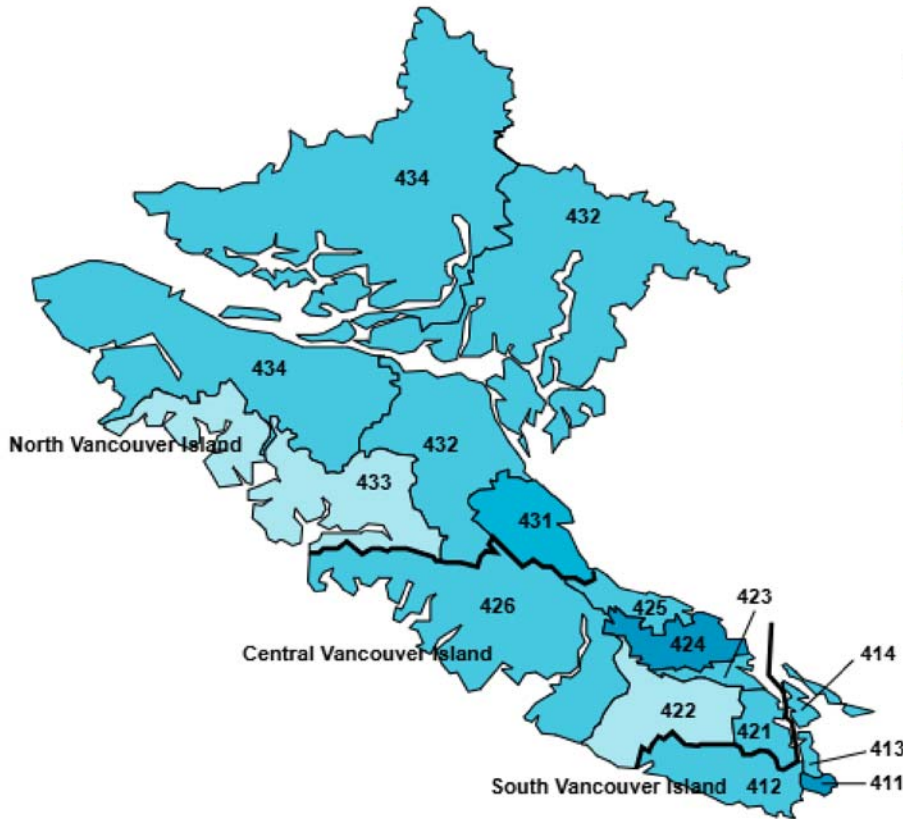
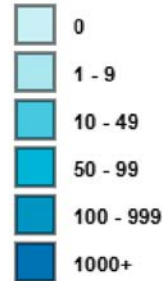




3.5 Distribution of HIV Treatment Program Active Participants October 2025

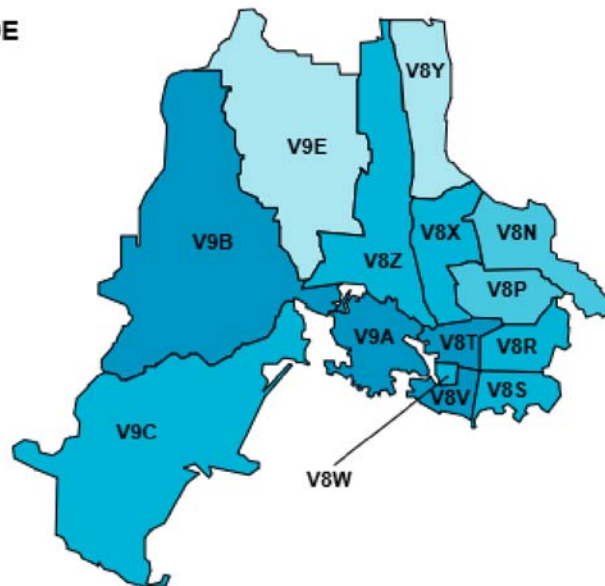
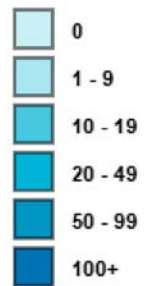
VANCOUVER ISLAND HEALTH AUTHORITY BY HEALTH SERVICE DELIVERY AREA/LOCAL HEALTH AREA

N = 1057



VICTORIA BY POSTAL CODE

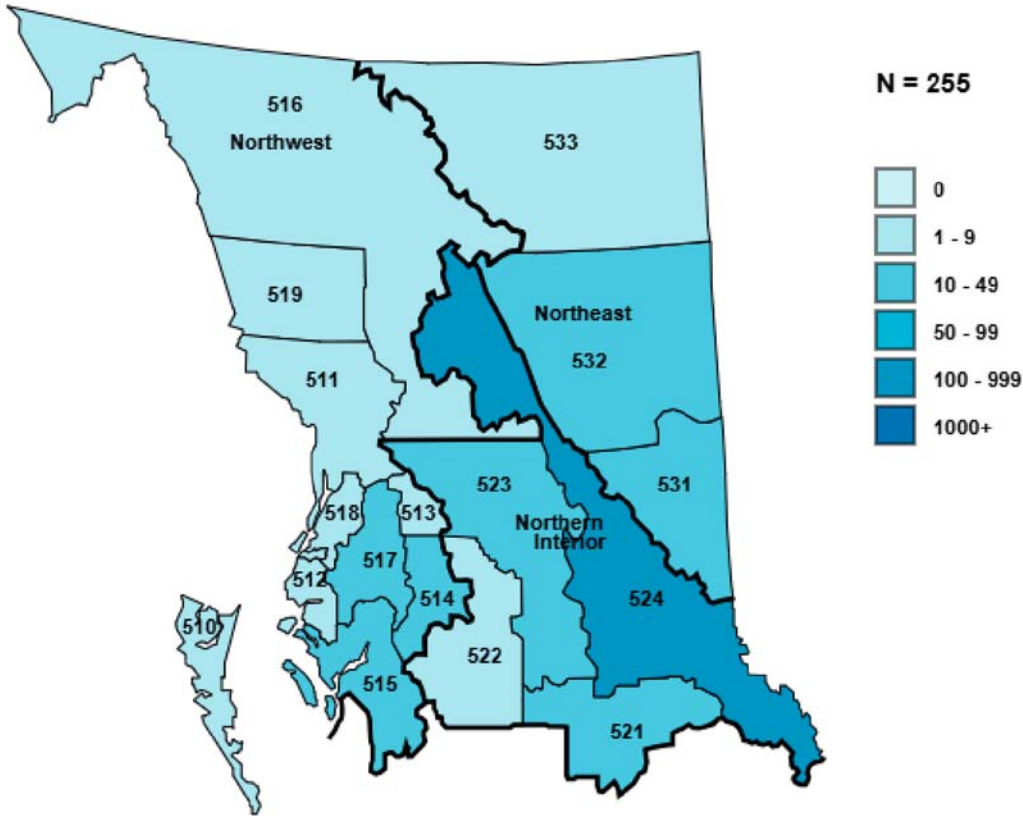
N = 520



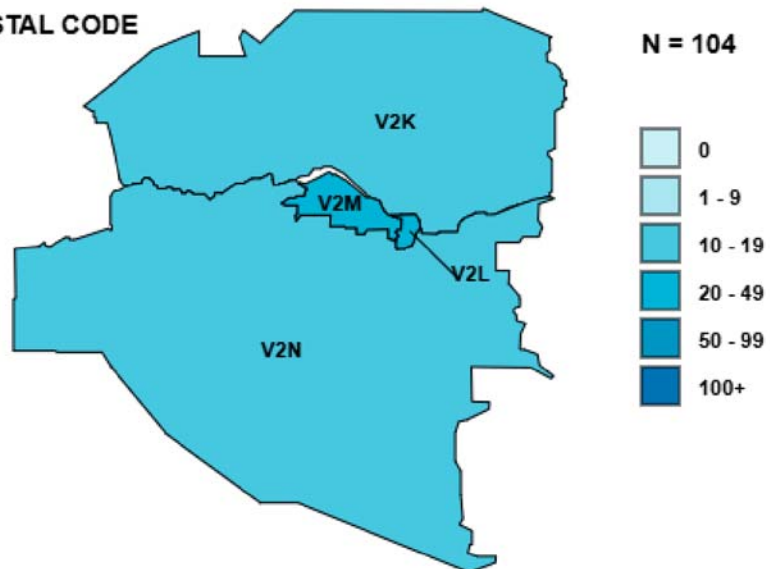


3.6 Distribution of HIV Treatment Program Active Participants October 2025

NORTHERN HEALTH AUTHORITY BY HEALTH SERVICE DELIVERY AREA/LOCAL HEALTH AREA



PRINCE GEORGE BY POSTAL CODE



4.1 Distribution of Participants by Age & Sex at Birth INTERIOR Health Authority (HA)

Health Service Delivery Area	Age Group	# Enrolled	# on ART	# First Starts	# CD4 Tested	Median CD4	# pVL Tested	Median pVL
EAST KOOTENAY	0 - 29	0	0	0	0	N/A	0	N/A
	30 - 49	15	12	0	16	765	12	<40
	50 - 64	14	14	0	14	760	14	<40
	65+	7	6	0	6	590	5	<40
	Total HSDA:	36	32	0	36	750	31	<40
KOOTENAY BOUNDARY	0 - 29	*	*	0	5	880	*	*
	30 - 49	*	*	0	13	770	*	*
	50 - 64	*	*	0	17	590	*	*
	65+	*	*	0	13	730	*	*
	Total HSDA:	57	52	0	48	750	46	<40
OKANAGAN	0 - 29	13	12	0	13	900	10	<40
	30 - 49	130	118	0	122	735	108	<40
	50 - 64	153	136	0	136	655	127	<40
	65+	89	84	0	81	570	72	<40
	Total HSDA:	385	350	0	352	655	317	<40
THOMPSON/CARIBOO/SHUSWAP	0 - 29	14	11	0	11	820	12	<40
	30 - 49	61	52	0	53	770	46	<40
	50 - 64	85	79	0	69	680	64	<40
	65+	37	35	0	31	660	33	<40
	Total HSDA:	197	177	0	164	700	155	<40
Total HA:		675	611	0	600	680	549	<40

	Age Group	# Enrolled	# on ART	# First Starts	# CD4 Tested	Median CD4	# pVL Tested	Median pVL
	0 - 29	31	27	0	29	880	25	<40
	30 - 49	220	195	0	204	740	179	<40
	50 - 64	273	247	0	236	670	218	<40
	65+	151	142	0	131	590	127	<40
Total HA:		675	611	0	600	680	549	<40

Sex at Birth	# Enrolled	# on ART	# First Starts	# CD4 Tested	Median CD4	# pVL Tested	Median pVL
Male	538	485	0	477	670	442	<40
Female	137	126	0	123	780	107	<40
Unknown	0	0	0	0	N/A	0	N/A

Currently on antiretroviral treatment	# of Participants	Median Age	Median CD4	Median pVL
Total HA:	611	56	680	<40

* Participant values and corresponding data > 0 and < 5 are suppressed for privacy purposes.

Enrolled: Participants who had enrolled in the HIV Treatment Program, but not known to be deceased or formally reported as moved out of program
 # **on ART**: # of participants on antiretroviral treatment (ART) in the specified month based on dispensing record
 # **CD4** or **pVL** tested: participants tested for CD4 or pVL within the past 12 months and 6 months, respectively (CD4 in cells/μL and pVL in copies/mL)



4.2 Distribution of Participants by Program Duration INTERIOR Health Authority

HSDA	Program Duration	# Enrolled	# on ART	# First Starts	# CD4 Tested	Median CD4	# pVL Tested	Median pVL
EAST KOOTENAY	10 years or more	17	14	0	*	*	*	*
	5 years or more	11	11	0	*	*	*	*
	<5 years	8	7	0	*	*	*	*
	Never on ART	0	0	0	*	*	*	*
	Total HSDA:	36	32	0	36	750	31	<40
KOOTENAY BOUNDARY	10 years or more	43	39	0	35	770	33	<40
	5 years or more	7	7	0	5	780	5	<40
	<5 years	7	6	0	8	690	8	<40
	Never on ART	0	0	0	0	N/A	0	N/A
	Total HSDA:	57	52	0	48	750	46	<40
OKANAGAN	10 years or more	249	228	0	*	*	*	*
	5 years or more	57	50	0	*	*	*	*
	<5 years	79	72	0	*	*	*	*
	Never on ART	0	0	0	*	*	*	*
	Total HSDA:	385	350	0	352	655	317	<40
THOMPSON/CARIBOO/SHUSWAP	10 years or more	120	108	0	*	*	*	*
	5 years or more	27	23	0	*	*	*	*
	<5 years	50	46	0	*	*	*	*
	Never on ART	0	0	0	*	*	*	*
	Total HSDA:	197	177	0	164	700	155	<40
Total HA:		675	611	0	600	680	549	<40

	Program Duration	# Enrolled	# on ART	# First Starts	# CD4 Tested	Median CD4	# pVL Tested	Median pVL
	10 years or more	429	389	0	*	*	*	*
	5 years or more	102	91	0	*	*	*	*
	<5 years	144	131	0	*	*	*	*
	Never on ART	0	0	0	*	*	*	*
Total HA:		675	611	0	600	680	549	<40

* Participant values and corresponding data > 0 and < 5 are suppressed for privacy purposes.

Enrolled: Participants who had enrolled in HIV Treatment Program, not known to be deceased or formally reported as moved out of program

on ART: Participants on antiretroviral treatment (ART) in the specified month based on dispensing record (as above footnote)

Program Duration: years since first antiretroviral treatment dispensing in BC HIV Treatment Program

CD4 or pVL tested: participants tested for CD4 or pVL within the past 12 months and 6 months, respectively





4.3 Distribution of Antiretroviral Treatment Prescribers INTERIOR Health Authority

HSDA of Prescriber Residency	# of Prescribers currently prescribing Antiretroviral Treatment	# of Participants currently treated by Prescribers	# of Prescribers ever prescribed Antiretroviral Treatment	# of Participants ever treated by Prescribers
EAST KOOTENAY	13	31	53	104
KOOTENAY BOUNDARY	15	38	77	141
OKANAGAN	51	329	246	1118
THOMPSON/CARIBOO/SHUSWAP	27	143	154	602
Total:	106	541	530	1965

HSDA of Participant Residency	# of Participants with Prescriber out of HA/HSDA
EAST KOOTENAY	*
KOOTENAY BOUNDARY	*
OKANAGAN	*
THOMPSON/CARIBOO/SHUSWAP	*
Total:	131

* Participant values and corresponding data > 0 and < 5 are suppressed for privacy purposes.

Currently prescribing Antiretroviral Treatment: number of prescribers of antiretroviral treatment dispensed in the previous 6 months (based on participant HA/HSDA)

Currently treated: number of participants with antiretroviral treatment dispensed in the previous 6 months by antiretroviral treatment prescribers (based on follow-up prescriber HA/HSDA)

Prescribers ever prescribed Antiretroviral Treatment: for participants residing in HA/HSDA

Participants ever treated by prescribers: where follow-up prescriber is in the HA/HSDA

Participants with Prescriber out of HA/HSDA: participants residing in specified HA/HSDA with follow-up prescriber(s) in another HA/HSDA



4.4 Distribution of Participants by Age & Sex at Birth FRASER Health Authority (HA)

Health Service Delivery Area	Age Group	# Enrolled	# on ART	# First Starts	# CD4 Tested	Median CD4	# pVL Tested	Median pVL
FRASER EAST	0 - 29	30	26	*	30	790	26	<40
	30 - 49	118	99	*	86	715	91	<40
	50 - 64	156	141	*	102	620	124	<40
	65+	73	71	*	49	630	69	<40
	Total HSDA:	377	337	<5	267	660	310	<40
FRASER NORTH	0 - 29	46	41	0	43	660	41	<40
	30 - 49	381	352	0	304	720	333	<40
	50 - 64	355	335	0	234	685	308	<40
	65+	181	174	0	110	610	160	<40
	Total HSDA:	963	902	0	691	690	842	<40
FRASER SOUTH	0 - 29	76	68	*	63	690	71	<40
	30 - 49	359	333	*	247	690	319	<40
	50 - 64	396	365	*	259	650	342	<40
	65+	170	166	*	125	590	158	<40
	Total HSDA:	1001	932	<5	694	650	890	<40
Total HA:		2341	2171	<5	1652	670	2042	<40

	Age Group	# Enrolled	# on ART	# First Starts	# CD4 Tested	Median CD4	# pVL Tested	Median pVL
	0 - 29	152	135	*	136	680	138	<40
	30 - 49	858	784	*	637	700	743	<40
	50 - 64	907	841	*	595	650	774	<40
	65+	424	411	*	284	590	387	<40
Total HA:		2341	2171	<5	1652	670	2042	<40

Sex at Birth	# Enrolled	# on ART	# First Starts	# CD4 Tested	Median CD4	# pVL Tested	Median pVL
Male	1770	1661	*	1208	660	1560	<40
Female	571	510	*	444	680	482	<40
Unknown	0	0	*	0	N/A	0	N/A

Currently on antiretroviral treatment	# of Participants	Median Age	Median CD4	Median pVL
Total HA:	2171	53	670	<40

* Participant values and corresponding data > 0 and < 5 are suppressed for privacy purposes.

Enrolled: Participants who had enrolled in the HIV Treatment Program, but not known to be deceased or formally reported as moved out of program
on ART: # of participants on antiretroviral treatment (ART) in the specified month based on dispensing record
CD4 or **pVL** tested: participants tested for CD4 or pVL within the past 12 months and 6 months, respectively (CD4 in cells/ μ L and pVL in copies/mL)



4.5 Distribution of Participants by Program Duration FRASER Health Authority

HSDA	Program Duration	# Enrolled	# on ART	# First Starts	# CD4 Tested	Median CD4	# pVL Tested	Median pVL
FRASER EAST	10 years or more	233	213	*	156	660	194	<40
	5 years or more	57	43	*	36	683.5	39	<40
	<5 years	87	81	*	75	620	77	<40
	Never on ART	0	0	*	0	N/A	0	N/A
	Total HSDA:	377	337	<5	267	660	310	<40
FRASER NORTH	10 years or more	599	566	0	*	*	*	*
	5 years or more	155	141	0	*	*	*	*
	<5 years	209	195	0	*	*	*	*
	Never on ART	0	0	0	*	*	*	*
	Total HSDA:	963	902	0	691	690	842	<40
FRASER SOUTH	10 years or more	573	528	*	*	*	494	<40
	5 years or more	160	141	*	*	*	137	<40
	<5 years	268	263	*	*	*	253	<40
	Never on ART	0	0	*	*	*	6	166
	Total HSDA:	1001	932	<5	694	650	890	<40
Total HA:		2341	2171	<5	1652	670	2042	<40

	Program Duration	# Enrolled	# on ART	# First Starts	# CD4 Tested	Median CD4	# pVL Tested	Median pVL
	10 years or more	1405	1307	*	926	680	1206	<40
	5 years or more	372	325	*	261	700	306	<40
	<5 years	564	539	*	459	626	521	<40
	Never on ART	0	0	*	6	660	9	69
Total HA:		2341	2171	<5	1652	670	2042	<40

* Participant values and corresponding data > 0 and < 5 are suppressed for privacy purposes.

Enrolled: Participants who had enrolled in HIV Treatment Program, not known to be deceased or formally reported as moved out of program

on ART: Participants on antiretroviral treatment (ART) in the specified month based on dispensing record (as above footnote)

Program Duration: years since first antiretroviral treatment dispensing in BC HIV Treatment Program

CD4 or pVL tested: participants tested for CD4 or pVL within the past 12 months and 6 months, respectively





4.6 Distribution of Antiretroviral Treatment Prescribers FRASER Health Authority

HSDA of Prescriber Residency	# of Prescribers currently prescribing Antiretroviral Treatment	# of Participants currently treated by Prescribers	# of Prescribers ever prescribed Antiretroviral Treatment	# of Participants ever treated by Prescribers
FRASER EAST	33	75	157	567
FRASER NORTH	31	245	270	1665
FRASER SOUTH	44	595	243	2031
Total:	108	915	670	4263

HSDA of Participant Residency	# of Participants with Prescriber out of HA/HSDA
FRASER EAST	213
FRASER NORTH	730
FRASER SOUTH	476
Total:	1419

* Participant values and corresponding data > 0 and < 5 are suppressed for privacy purposes.

Currently prescribing Antiretroviral Treatment: number of prescribers of antiretroviral treatment dispensed in the previous 6 months (based on participant HA/HSDA)

Currently treated: number of participants with antiretroviral treatment dispensed in the previous 6 months by antiretroviral treatment prescribers (based on follow-up prescriber HA/HSDA)

Prescribers ever prescribed Antiretroviral Treatment: for participants residing in HA/HSDA

Participants ever treated by prescribers: where follow-up prescriber is in the HA/HSDA

Participants with Prescriber out of HA/HSDA: participants residing in specified HA/HSDA with follow-up prescriber(s) in another HA/HSDA



4.7 Distribution of Participants by Age & Sex at Birth VANCOUVER COASTAL Health Authority (HA)

Health Service Delivery Area	Age Group	# Enrolled	# on ART	# First Starts	# CD4 Tested	Median CD4	# pVL Tested	Median pVL
NORTH SHORE/COAST GARIBALDI	0 - 29	11	10	0	10	870	10	<40
	30 - 49	75	66	0	61	700	60	<40
	50 - 64	131	117	0	84	730	108	<40
	65+	97	94	0	78	645	93	<40
	Total HSDA:	314	287	0	233	700	271	<40
RICHMOND	0 - 29	9	8	*	8	610	8	<40
	30 - 49	65	58	*	57	580	58	<40
	50 - 64	78	73	*	62	730	76	<40
	65+	28	27	*	25	610	26	<40
	Total HSDA:	180	166	<5	152	640	168	<40
VANCOUVER	0 - 29	102	94	*	88	660	90	<40
	30 - 49	1173	1030	*	853	700	993	<40
	50 - 64	1467	1355	*	1022	610	1336	<40
	65+	769	739	*	485	600	720	<40
	Total HSDA:	3511	3218	<5	2448	650	3139	<40
Total HA:		4005	3671	<5	2833	650	3578	<40

	Age Group	# Enrolled	# on ART	# First Starts	# CD4 Tested	Median CD4	# pVL Tested	Median pVL
	0 - 29	122	112	*	106	670	108	<40
	30 - 49	1313	1154	*	971	700	1111	<40
	50 - 64	1676	1545	*	1168	630	1520	<40
	65+	894	860	*	588	610	839	<40
Total HA:		4005	3671	<5	2833	650	3578	<40

Sex at Birth	# Enrolled	# on ART	# First Starts	# CD4 Tested	Median CD4	# pVL Tested	Median pVL
Male	3509	3217	*	2369	650	3160	<40
Female	496	454	*	464	680	418	<40
Unknown	0	0	*	0	N/A	0	N/A

Currently on antiretroviral treatment	# of Participants	Median Age	Median CD4	Median pVL
Total HA:	3671	56	650	<40

* Participant values and corresponding data > 0 and < 5 are suppressed for privacy purposes.

Enrolled: Participants who had enrolled in the HIV Treatment Program, but not known to be deceased or formally reported as moved out of program
 # **on ART**: # of participants on antiretroviral treatment (ART) in the specified month based on dispensing record
 # **CD4** or **pVL** tested: participants tested for CD4 or pVL within the past 12 months and 6 months, respectively (CD4 in cells/ μ L and pVL in copies/mL)



4.8 Distribution of Participants by Program Duration VANCOUVER COASTAL Health Authority

HSDA	Program Duration	# Enrolled	# on ART	# First Starts	# CD4 Tested	Median CD4	# pVL Tested	Median pVL
NORTH SHORE/COAST GARIBALDI	10 years or more	228	206	0	159	700	198	<40
	5 years or more	40	38	0	31	820	33	<40
	<5 years	46	43	0	43	700	40	<40
	Never on ART	0	0	0	0	N/A	0	N/A
	Total HSDA:	314	287	0	233	700	271	<40
RICHMOND	10 years or more	99	91	*	77	650	92	<40
	5 years or more	35	31	*	29	650	31	<40
	<5 years	46	44	*	46	610	45	<40
	Never on ART	0	0	*	0	N/A	0	N/A
	Total HSDA:	180	166	<5	152	640	168	<40
VANCOUVER	10 years or more	2473	2304	*	*	*	2258	<40
	5 years or more	522	441	*	*	*	424	<40
	<5 years	516	473	*	*	*	451	<40
	Never on ART	0	0	*	*	*	6	<40
	Total HSDA:	3511	3218	<5	2448	650	3139	<40
Total HA:		4005	3671	<5	2833	650	3578	<40

	Program Duration	# Enrolled	# on ART	# First Starts	# CD4 Tested	Median CD4	# pVL Tested	Median pVL
	10 years or more	2800	2601	*	*	*	2548	<40
	5 years or more	597	510	*	*	*	488	<40
	<5 years	608	560	*	*	*	536	<40
	Never on ART	0	0	*	*	*	6	<40
Total HA:		4005	3671	<5	2833	650	3578	<40

* Participant values and corresponding data > 0 and < 5 are suppressed for privacy purposes.

Enrolled: Participants who had enrolled in HIV Treatment Program, not known to be deceased or formally reported as moved out of program

on ART: Participants on antiretroviral treatment (ART) in the specified month based on dispensing record (as above footnote)

Program Duration: years since first antiretroviral treatment dispensing in BC HIV Treatment Program

CD4 or pVL tested: participants tested for CD4 or pVL within the past 12 months and 6 months, respectively





4.9 Distribution of Antiretroviral Treatment Prescribers VANCOUVER COASTAL Health Authority

HSDA of Prescriber Residency	# of Prescribers currently prescribing Antiretroviral Treatment	# of Participants currently treated by Prescribers	# of Prescribers ever prescribed Antiretroviral Treatment	# of Participants ever treated by Prescribers
NORTH SHORE/COAST GARIBALDI	39	62	206	584
RICHMOND	9	114	50	350
VANCOUVER	207	5429	710	12328
Total:	255	5605	966	13262

HSDA of Participant Residency	# of Participants with Prescriber out of HA/HSDA
NORTH SHORE/COAST GARIBALDI	*
RICHMOND	*
VANCOUVER	*
Total:	54

* Participant values and corresponding data > 0 and < 5 are suppressed for privacy purposes.

Currently prescribing Antiretroviral Treatment: number of prescribers of antiretroviral treatment dispensed in the previous 6 months (based on participant HA/HSDA)

Currently treated: number of participants with antiretroviral treatment dispensed in the previous 6 months by antiretroviral treatment prescribers (based on follow-up prescriber HA/HSDA)

Prescribers ever prescribed Antiretroviral Treatment: for participants residing in HA/HSDA

Participants ever treated by prescribers: where follow-up prescriber is in the HA/HSDA

Participants with Prescriber out of HA/HSDA: participants residing in specified HA/HSDA with follow-up prescriber(s) in another HA/HSDA



4.10 Distribution of Participants by Age & Sex at Birth VANCOUVER ISLAND Health Authority (HA)

Health Service Delivery Area	Age Group	# Enrolled	# on ART	# First Starts	# CD4 Tested	Median CD4	# pVL Tested	Median pVL
CENTRAL VANCOUVER ISLAND	0 - 29	5	*	0	5	1040	5	<40
	30 - 49	86	*	0	53	620	63	<40
	50 - 64	143	*	0	66	700	115	<40
	65+	94	*	0	35	510	84	<40
	Total HSDA:	328	301	0	159	610	267	<40
NORTH VANCOUVER ISLAND	0 - 29	*	*	0	*	*	*	*
	30 - 49	*	*	0	*	*	*	*
	50 - 64	*	*	0	*	*	*	*
	65+	*	*	0	*	*	*	*
	Total HSDA:	119	109	0	57	610	93	<40
SOUTH VANCOUVER ISLAND	0 - 29	28	25	*	13	550	22	<40
	30 - 49	205	174	*	67	590	147	<40
	50 - 64	305	284	*	83	600	250	<40
	65+	171	164	*	33	660	153	<40
	Total HSDA:	709	647	<5	196	615	572	<40
Total HA:		1156	1057	<5	412	610	932	<40

	Age Group	# Enrolled	# on ART	# First Starts	# CD4 Tested	Median CD4	# pVL Tested	Median pVL
	0 - 29	37	33	*	21	570	29	<40
	30 - 49	319	276	*	135	600	229	<40
	50 - 64	501	464	*	171	640	408	<40
	65+	299	284	*	85	610	266	<40
Total HA:		1156	1057	<5	412	610	932	<40

Sex at Birth	# Enrolled	# on ART	# First Starts	# CD4 Tested	Median CD4	# pVL Tested	Median pVL
Male	961	877	*	317	600	776	<40
Female	195	180	*	95	660	156	<40
Unknown	0	0	*	0	N/A	0	N/A

Currently on antiretroviral treatment	# of Participants	Median Age	Median CD4	Median pVL
Total HA:	1057	58	615	<40

* Participant values and corresponding data > 0 and < 5 are suppressed for privacy purposes.

Enrolled: Participants who had enrolled in the HIV Treatment Program, but not known to be deceased or formally reported as moved out of program
 # **on ART:** # of participants on antiretroviral treatment (ART) in the specified month based on dispensing record
 # **CD4 or pVL tested:** participants tested for CD4 or pVL within the past 12 months and 6 months, respectively (CD4 in cells/ μ L and pVL in copies/mL)



4.11 Distribution of Participants by Program Duration VANCOUVER ISLAND Health Authority

HSDA	Program Duration	# Enrolled	# on ART	# First Starts	# CD4 Tested	Median CD4	# pVL Tested	Median pVL
CENTRAL VANCOUVER ISLAND	10 years or more	228	209	0	100	600	184	<40
	5 years or more	56	52	0	28	745	47	<40
	<5 years	44	40	0	31	560	36	<40
	Never on ART	0	0	0	0	N/A	0	N/A
	Total HSDA:	328	301	0	159	610	267	<40
NORTH VANCOUVER ISLAND	10 years or more	93	85	0	40	560	73	<40
	5 years or more	10	9	0	6	860	8	<40
	<5 years	16	15	0	11	700	12	<40
	Never on ART	0	0	0	0	N/A	0	N/A
	Total HSDA:	119	109	0	57	610	93	<40
SOUTH VANCOUVER ISLAND	10 years or more	433	406	*	*	*	*	*
	5 years or more	133	109	*	*	*	*	*
	<5 years	143	132	*	*	*	*	*
	Never on ART	0	0	*	*	*	*	*
	Total HSDA:	709	647	<5	196	615	572	<40
Total HA:		1156	1057	<5	412	610	932	<40

	Program Duration	# Enrolled	# on ART	# First Starts	# CD4 Tested	Median CD4	# pVL Tested	Median pVL
	10 years or more	754	700	*	*	*	*	*
	5 years or more	199	170	*	*	*	*	*
	<5 years	203	187	*	*	*	*	*
	Never on ART	0	0	*	*	*	*	*
Total HA:		1156	1057	<5	412	610	932	<40

* Participant values and corresponding data > 0 and < 5 are suppressed for privacy purposes.

Enrolled: Participants who had enrolled in HIV Treatment Program, not known to be deceased or formally reported as moved out of program

on ART: Participants on antiretroviral treatment (ART) in the specified month based on dispensing record (as above footnote)

Program Duration: years since first antiretroviral treatment dispensing in BC HIV Treatment Program

CD4 or pVL tested: participants tested for CD4 or pVL within the past 12 months and 6 months, respectively





4.12 Distribution of Antiretroviral Treatment Prescribers VANCOUVER ISLAND Health Authority

HSDA of Prescriber Residency	# of Prescribers currently prescribing Antiretroviral Treatment	# of Participants currently treated by Prescribers	# of Prescribers ever prescribed Antiretroviral Treatment	# of Participants ever treated by Prescribers
CENTRAL VANCOUVER ISLAND	66	206	216	987
NORTH VANCOUVER ISLAND	33	64	155	368
SOUTH VANCOUVER ISLAND	48	612	242	2095
Total:	147	882	613	3450

HSDA of Participant Residency	# of Participants with Prescriber out of HA/HSDA
CENTRAL VANCOUVER ISLAND	95
NORTH VANCOUVER ISLAND	49
SOUTH VANCOUVER ISLAND	124
Total:	268

* Participant values and corresponding data > 0 and < 5 are suppressed for privacy purposes.

Currently prescribing Antiretroviral Treatment: number of prescribers of antiretroviral treatment dispensed in the previous 6 months (based on participant HA/HSDA)

Currently treated: number of participants with antiretroviral treatment dispensed in the previous 6 months by antiretroviral treatment prescribers (based on follow-up prescriber HA/HSDA)

Prescribers ever prescribed Antiretroviral Treatment: for participants residing in HA/HSDA

Participants ever treated by prescribers: where follow-up prescriber is in the HA/HSDA

Participants with Prescriber out of HA/HSDA: participants residing in specified HA/HSDA with follow-up prescriber(s) in another HA/HSDA



4.13 Distribution of Participants by Age & Sex at Birth NORTHERN Health Authority (HA)

Health Service Delivery Area	Age Group	# Enrolled	# on ART	# First Starts	# CD4 Tested	Median CD4	# pVL Tested	Median pVL
NORTH EAST	0 - 29	*	*	0	*	*	*	*
	30 - 49	*	*	0	*	*	*	*
	50 - 64	*	*	0	*	*	*	*
	65+	*	*	0	*	*	*	*
	Total HSDA:	45	35	0	42	615	29	<40
NORTH WEST	0 - 29	*	*	*	*	*	*	*
	30 - 49	*	*	*	*	*	*	*
	50 - 64	*	*	*	*	*	*	*
	65+	*	*	*	*	*	*	*
	Total HSDA:	74	68	<5	69	590	54	<40
NORTHERN INTERIOR	0 - 29	8	8	0	8	1080	7	<40
	30 - 49	65	50	0	61	700	48	<40
	50 - 64	69	62	0	66	505	59	<40
	65+	33	32	0	33	480	31	<40
	Total HSDA:	175	152	0	168	580	145	<40
Total HA:		294	255	<5	279	590	228	<40

	Age Group	# Enrolled	# on ART	# First Starts	# CD4 Tested	Median CD4	# pVL Tested	Median pVL
	0 - 29	16	15	*	16	795	13	<40
	30 - 49	105	79	*	96	635	71	<40
	50 - 64	120	109	*	115	550	96	<40
	65+	53	52	*	52	530	48	<40
Total HA:		294	255	<5	279	590	228	<40

Sex at Birth	# Enrolled	# on ART	# First Starts	# CD4 Tested	Median CD4	# pVL Tested	Median pVL
Male	193	173	*	183	610	151	<40
Female	101	82	*	96	520	77	<40
Unknown	0	0	*	0	N/A	0	N/A

Currently on antiretroviral treatment	# of Participants	Median Age	Median CD4	Median pVL
Total HA:	255	54	610	<40

* Participant values and corresponding data > 0 and < 5 are suppressed for privacy purposes.

Enrolled: Participants who had enrolled in the HIV Treatment Program, but not known to be deceased or formally reported as moved out of program
 # **on ART:** # of participants on antiretroviral treatment (ART) in the specified month based on dispensing record
 # **CD4 or pVL tested:** participants tested for CD4 or pVL within the past 12 months and 6 months, respectively (CD4 in cells/ μ L and pVL in copies/mL)



4.14 Distribution of Participants by Program Duration NORTHERN Health Authority

HSDA	Program Duration	# Enrolled	# on ART	# First Starts	# CD4 Tested	Median CD4	# pVL Tested	Median pVL
NORTH EAST	10 years or more	*	*	0	*	*	*	*
	5 years or more	*	*	0	*	*	*	*
	<5 years	*	*	0	*	*	*	*
	Never on ART	*	*	0	*	*	*	*
	Total HSDA:	45	35	0	42	615	29	<40
NORTH WEST	10 years or more	50	46	*	*	*	*	*
	5 years or more	9	8	*	*	*	*	*
	<5 years	15	14	*	*	*	*	*
	Never on ART	0	0	*	*	*	*	*
	Total HSDA:	74	68	<5	69	590	54	<40
NORTHERN INTERIOR	10 years or more	116	105	0	*	*	104	<40
	5 years or more	33	24	0	*	*	21	<40
	<5 years	26	23	0	*	*	20	<40
	Never on ART	0	0	0	*	*	0	N/A
	Total HSDA:	175	152	0	168	580	145	<40
Total HA:		294	255	<5	279	590	228	<40

	Program Duration	# Enrolled	# on ART	# First Starts	# CD4 Tested	Median CD4	# pVL Tested	Median pVL
	10 years or more	189	169	*	*	*	*	*
	5 years or more	46	34	*	*	*	*	*
	<5 years	59	52	*	*	*	*	*
	Never on ART	0	0	*	*	*	*	*
Total HA:		294	255	<5	279	590	228	<40

* Participant values and corresponding data > 0 and < 5 are suppressed for privacy purposes.

Enrolled: Participants who had enrolled in HIV Treatment Program, not known to be deceased or formally reported as moved out of program

on ART: Participants on antiretroviral treatment (ART) in the specified month based on dispensing record (as above footnote)

Program Duration: years since first antiretroviral treatment dispensing in BC HIV Treatment Program

CD4 or pVL tested: participants tested for CD4 or pVL within the past 12 months and 6 months, respectively





4.15 Distribution of Antiretroviral Treatment Prescribers NORTHERN Health Authority

HSDA of Prescriber Residency	# of Prescribers currently prescribing Antiretroviral Treatment	# of Participants currently treated by Prescribers	# of Prescribers ever prescribed Antiretroviral Treatment	# of Participants ever treated by Prescribers
NORTH EAST	1	*	37	50
NORTH WEST	15	*	94	178
NORTHERN INTERIOR	21	*	129	557
Total:	37	230	260	785

HSDA of Participant Residency	# of Participants with Prescriber out of HA/HSDA
NORTH EAST	8
NORTH WEST	30
NORTHERN INTERIOR	23
Total:	61

* Participant values and corresponding data > 0 and < 5 are suppressed for privacy purposes.

Currently prescribing Antiretroviral Treatment: number of prescribers of antiretroviral treatment dispensed in the previous 6 months (based on participant HA/HSDA)

Currently treated: number of participants with antiretroviral treatment dispensed in the previous 6 months by antiretroviral treatment prescribers (based on follow-up prescriber HA/HSDA)

Prescribers ever prescribed Antiretroviral Treatment: for participants residing in HA/HSDA

Participants ever treated by prescribers: where follow-up prescriber is in the HA/HSDA

Participants with Prescriber out of HA/HSDA: participants residing in specified HA/HSDA with follow-up prescriber(s) in another HA/HSDA



4.16 Distribution of Indigenous Participants by Health Service Delivery Area and Sex at Birth

HA	HSDA	# Enrolled	# on ART	# First Starts	# CD4 Tested	Median CD4	# pVL Tested	Median pVL
INTERIOR	EAST KOOTENAY	*	*	0	*	*	*	*
	KOOTENAY BOUNDARY	*	*	0	*	*	*	*
	OKANAGAN	*	*	0	*	*	*	*
	THOMPSON/CARIBOO/SHUSWAP	*	*	0	*	*	*	*
	Total HA:	54	48	0	47	600	39	<40
FRASER	FRASER EAST	31	26	*	24	645	23	<40
	FRASER NORTH	39	37	*	30	450.5	32	<40
	FRASER SOUTH	58	52	*	41	558	50	<40
	Total HA:	128	115	<5	95	560	105	<40
VANCOUVER COASTAL	NORTH SHORE/COAST GARIBALDI	28	26	0	23	700	22	<40
	RICHMOND	5	5	0	5	460	5	<40
	VANCOUVER	364	341	0	340	500	321	<40
	Total HA:	397	372	0	368	520	348	<40
VANCOUVER ISLAND	CENTRAL VANCOUVER ISLAND	45	42	0	26	510	36	<40
	NORTH VANCOUVER ISLAND	15	12	0	7	430	8	<40
	SOUTH VANCOUVER ISLAND	43	38	0	14	595	29	<40
	Total HA:	103	92	0	47	510	73	<40
NORTHERN	NORTH EAST	11	9	*	11	500	6	<40
	NORTH WEST	36	33	*	34	525	27	<40
	NORTHERN INTERIOR	64	55	*	63	470	54	<40
	Total HA:	111	97	<5	108	485	87	<40
Total:		793	724	<5	665	529	652	<40

Sex at Birth	# Enrolled	# on Antiretroviral Treatment	# First Starts	# CD4 Tested	Median CD4	# pVL Tested	Median pVL
Male	496	457	*	403	510	419	<40
Female	297	267	*	262	550	233	<40
Unknown	0	0	*	0	N/A	0	N/A

Currently on antiretroviral treatment	# of Participants	Median Age	Median CD4	Median pVL
Total:	724	55	540	<40

* Participant values and corresponding data > 0 and < 5 are suppressed for privacy purposes.

Enrolled: Participants who had enrolled in the HIV Treatment Program, but not known to be deceased or formally reported as moved out of program

on Antiretroviral Treatment: defined as # of Participants being on antiretroviral treatment in the specified month

CD4 or pVL tested: participants tested for CD4 or pVL within the past 12 months and 6 months, respectively (CD4 in cells/μL and pVL in copies/mL)





BRITISH COLUMBIA
CENTRE *for* EXCELLENCE
in HIV/AIDS

Funding for the BC Centre for Excellence in HIV/AIDS and HIV Drug Treatment Program provided in-part by:

