



BRITISH COLUMBIA  
CENTRE *for* EXCELLENCE  
*in* HIV/AIDS

# BC HIV Treatment Program

Monthly Report  
**December 2025**



## FOREWORD

The British Columbia Centre for Excellence in HIV/AIDS (BC-CfE) is a provincial treatment and research program, with the mandate to improve the health of people living with HIV (“PLWH”), and those at elevated risk of acquiring HIV in British Columbia (BC), by advancing and promoting programs for treatment and prevention of HIV, and related conditions, guided by Treatment as Prevention® (TasP®) principles. Funded by the BC’s Ministry of Health, through the province’s PharmaCare Program, the BC-CfE’s Drug Treatment Programs provide medications for HIV treatment, prevention, and select related conditions, at no charge, to medically eligible BC residents living with HIV, or at elevated risk of HIV acquisition. The provision of these medications are based on guidelines developed by the BC-CfE’s Committee for Drug Evaluation and Therapy (CDET) and program consideration.

A key component of the BC-CfE’s mandate is to monitor and evaluate its HIV Treatment Program, reporting on a regular basis and providing essential information to BC’s health authorities, treating clinicians, and the community at large. This HIV Treatment Program Report provides an overview of the use of antiretroviral medications in BC for the treatment of HIV, common drug combinations, key monitoring parameters, and distribution of program participants throughout the province.

Figures and graphs in this document are best viewed in colour.

Please note that any comments or queries regarding this report should be forwarded to [info@bccfe.ca](mailto:info@bccfe.ca).

### BC Centre for Excellence in HIV/AIDS Drug Treatment Programs

St. Paul’s Hospital  
687 - 1081 Burrard Street  
Vancouver, BC  
V6Z 1Y6

Tel: 604.806.8515  
Fax: 604.806.9044

Website: [www.bccfe.ca](http://www.bccfe.ca)  
Email: [info@bccfe.ca](mailto:info@bccfe.ca)

Funding for the BC Centre for Excellence in HIV/AIDS is provided through BC’s PharmaCare and Ministry of Health.

**DISCLAIMER:** All information presented in this report is generated from a secure, live database maintained by the BC-CfE. Privacy and confidentiality are matters which are taken very seriously and strict rules and procedures are applied to ensure that the information stored is secure.

Figures and tables provided in this report represent the best estimates at the time the document was generated, and may be subject to change. Please be advised that the information in this document is provided in good faith and is derived from sources understood to be accurate and up-to-date at the report’s date of publication.

© 2026 BC Centre for Excellence in HIV/AIDS



## TABLE OF CONTENTS

### 1. List of Figures

- 1.1 Distribution of Participants on Antiretroviral Treatment in British Columbia by Health Authority
- 1.2 Distribution of Participants in HIV Treatment Program by Regimen Category
- 1.3 Distribution of Participants in HIV Treatment Program by Regimen Category
- 1.4 Distribution of Participants on Nucleos(t)ide Analogue Reverse Transcriptase Inhibitors by INGREDIENT
- 1.5 Number of Participants on Nucleos(t)ide Analogue Reverse Transcriptase Inhibitors by INGREDIENT
- 1.6 Distribution of Participants on Protease Inhibitors by INGREDIENT
- 1.7 Number of Participants on Protease Inhibitors by INGREDIENT
- 1.8 Distribution of Participants on Non-Nucleoside Analogue Reverse Transcriptase Inhibitors by INGREDIENT
- 1.9 Number of Participants on Non-Nucleoside Analogue Reverse Transcriptase Inhibitors by INGREDIENT
- 1.10 Distribution of Participants on Integrase Inhibitors by INGREDIENT
- 1.11 Number of Participants on Integrase Inhibitors by INGREDIENT
- 1.12 Distribution of Participants on Other Antiretroviral Drug Classes by INGREDIENT
- 1.13 Number of Participants on Other Antiretroviral Drug Classes by INGREDIENT
- 1.14 Distribution of Participants on Antiretroviral Treatment by Number of Antiretrovirals (graph)
- 1.15 Distribution of Participants on Antiretroviral Treatment by Number of Antiretrovirals (table)
- 1.16 Percent Distribution of Active Participants by CD4 Count
- 1.17 Distribution of Active Participants by CD4 Count
- 1.18 Initial Regimen Composition for Antiretroviral Treatment Naïve Participants Starting Treatment (graph)
- 1.19 Initial Regimen Composition for Antiretroviral Treatment Naïve Participants Starting Treatment (table)
- 1.20 Pre-entry CD4 for Antiretroviral Treatment Naïve Participants in the HIV Treatment Program (graph)
- 1.21 Pre-entry CD4 for Antiretroviral Treatment Naïve Participants in the HIV Treatment Program (table)
- 1.22 Antiretroviral Resistance by Drug Class Among Participants on Antiretroviral Treatment (graph)
- 1.23 Antiretroviral Resistance by Drug Class Among Participants on Antiretroviral Treatment (table)
- 1.24 Active Participants by number of Antiretroviral Drug Classes with Resistance (graph)
- 1.25 Active Participants by number of Antiretroviral Drug Classes with Resistance (table)

### 2. List of Tables

- 2.1 Active participants by Year of Program Initiation (1987 - 2025) - as of January 2025
- 2.2 HIV Viral Load (copies/mL) and CD4 (cells/ $\mu$ L) for Participants on Antiretroviral Treatment
- 2.3 BC-CfE HIV Treatment Program Enrolment

### 3. Distribution of HIV Treatment Program Active Participants

- 3.1 Provincial Health Authorities
- 3.2 Interior Health Authority & Kelowna
- 3.3 Fraser Health Authority & Surrey
- 3.4 Vancouver Coastal Health Authority & Vancouver
- 3.5 Vancouver Island Health Authority & Victoria
- 3.6 Northern Health Authority & Prince George

## TABLE OF CONTENTS (continued)

### 4. Health Authority Tables

#### INTERIOR HEALTH

- 4.1 Distribution of Participants by Age & Sex at Birth
- 4.2 Distribution of Participants by Program Duration
- 4.3 Distribution of Antiretroviral Treatment Prescribers

#### FRASER HEALTH

- 4.4 Distribution of Participants by Age & Sex at Birth
- 4.5 Distribution of Participants by Program Duration
- 4.6 Distribution of Antiretroviral Treatment Prescribers

#### VANCOUVER COASTAL

- 4.7 Distribution of Participants by Age & Sex at Birth
- 4.8 Distribution of Participants by Program Duration
- 4.9 Distribution of Antiretroviral Treatment Prescribers

#### VANCOUVER ISLAND

- 4.10 Distribution of Participants by Age & Sex at Birth
- 4.11 Distribution of Participants by Program Duration
- 4.12 Distribution of Antiretroviral Treatment Prescribers

#### NORTHERN HEALTH

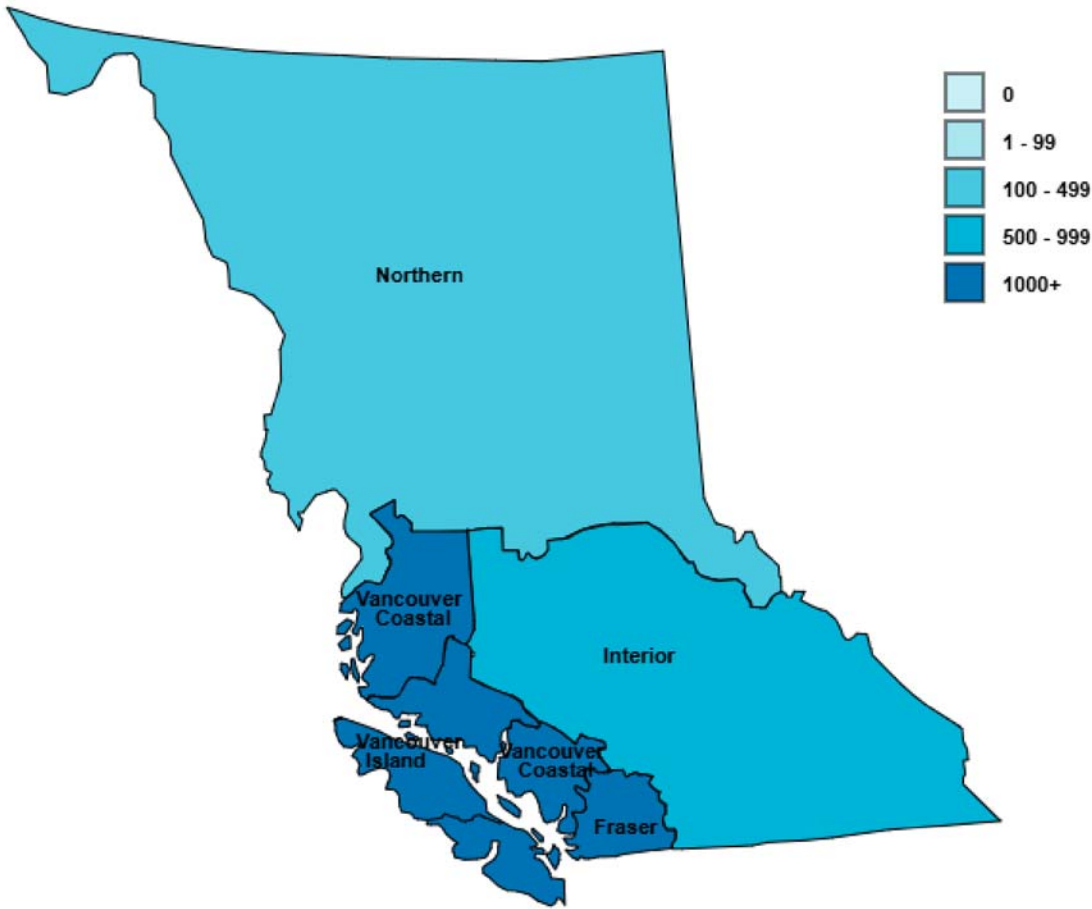
- 4.13 Distribution of Participants by Age & Sex at Birth
- 4.14 Distribution of Participants by Program Duration
- 4.15 Distribution of Antiretroviral Treatment Prescribers

#### INDIGENOUS PARTICIPANTS

- 4.16 Distribution of Indigenous Participants by Health Service Delivery Area and Sex at Birth



1.1 Distribution of Participants on Antiretroviral Treatment in British Columbia by Health Authority  
December 2025  
N = 7833

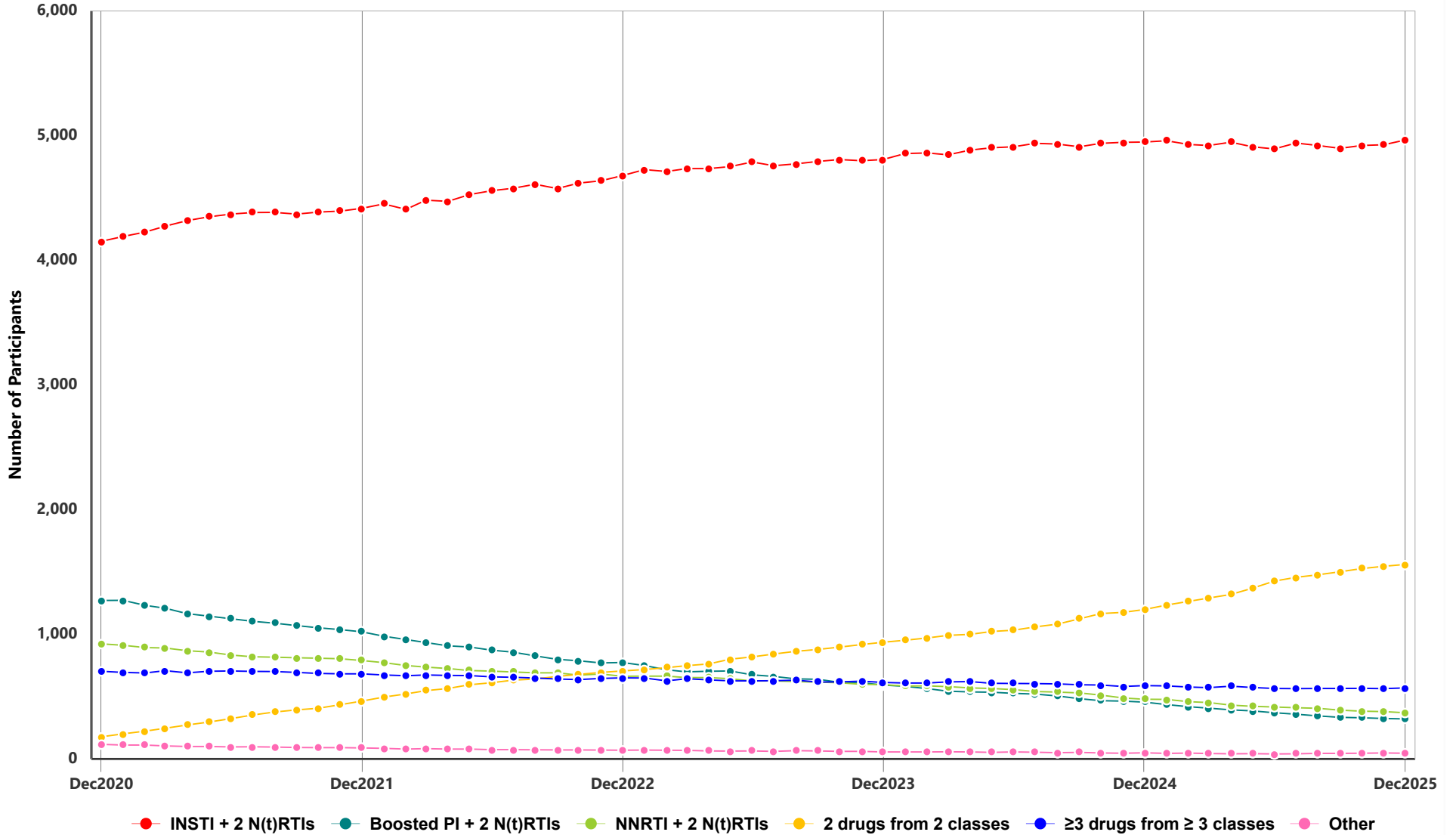


Health Authority	Male	Female	All
FRASER	1647	526	2173
VANCOUVER ISLAND	895	182	1077
VANCOUVER COASTAL	3241	451	3692
INTERIOR	497	127	624
NORTHERN	168	83	251
	<b>6448</b>	<b>1369</b>	<b>7817</b>
<b>Unknown/not stated</b>			<b>16</b>
<b>Total</b>			<b>7833</b>

On antiretroviral treatment is defined as being on treatment in the current month  
**Unknown/not stated** is defined as being on treatment in the current month, and city of residence is unknown  
**Male & Female** refer to Sex assigned at birth



1.2 Distribution of Participants in HIV Treatment Program by Regimen Category  
December 2020 - December 2025



**1.3 Distribution of Participants in HIV Treatment Program by Regimen Category**

MON-YYYY	Total	INSTI		Boosted PI		NNRTI		2 drugs from 2 classes		≥3 drugs from ≥3 classes		Other	
		n	%	n	%	n	%	n	%	n	%	n	%
JAN-2024	7642	4856	63.5	583	7.6	585	7.7	952	12.5	609	8.0	57	0.7
FEB-2024	7647	4861	63.6	564	7.4	586	7.7	971	12.7	609	8.0	56	0.7
MAR-2024	7636	4846	63.5	543	7.1	580	7.6	991	13.0	618	8.1	58	0.8
APR-2024	7670	4884	63.7	538	7.0	570	7.4	1000	13.0	621	8.1	57	0.7
MAY-2024	7687	4902	63.8	536	7.0	566	7.4	1023	13.3	607	7.9	53	0.7
JUN-2024	7687	4910	63.9	526	6.8	556	7.2	1033	13.4	606	7.9	56	0.7
JUL-2024	7718	4938	64.0	520	6.7	541	7.0	1060	13.7	605	7.8	54	0.7
AUG-2024	7709	4933	64.0	505	6.6	537	7.0	1081	14.0	602	7.8	51	0.7
SEP-2024	7697	4911	63.8	484	6.3	530	6.9	1124	14.6	595	7.7	53	0.7
OCT-2024	7725	4938	63.9	467	6.0	512	6.6	1167	15.1	593	7.7	48	0.6
NOV-2024	7703	4946	64.2	464	6.0	490	6.4	1176	15.3	581	7.5	46	0.6
DEC-2024	7720	4949	64.1	456	5.9	479	6.2	1199	15.5	588	7.6	49	0.6
JAN-2025	7739	4959	64.1	437	5.6	478	6.2	1234	15.9	586	7.6	45	0.6
FEB-2025	7696	4929	64.0	419	5.4	460	6.0	1264	16.4	577	7.5	47	0.6
MAR-2025	7689	4921	64.0	408	5.3	453	5.9	1291	16.8	572	7.4	44	0.6
APR-2025	7719	4947	64.1	394	5.1	432	5.6	1320	17.1	584	7.6	42	0.5
MAY-2025	7705	4911	63.7	386	5.0	423	5.5	1369	17.8	573	7.4	43	0.6
JUN-2025	7713	4893	63.4	371	4.8	417	5.4	1427	18.5	565	7.3	40	0.5
JUL-2025	7772	4940	63.6	359	4.6	411	5.3	1457	18.7	564	7.3	41	0.5
AUG-2025	7762	4921	63.4	346	4.5	407	5.2	1478	19.0	565	7.3	45	0.6
SEP-2025	7737	4898	63.3	334	4.3	392	5.1	1502	19.4	566	7.3	45	0.6
OCT-2025	7776	4921	63.3	331	4.3	384	4.9	1527	19.6	567	7.3	46	0.6
NOV-2025	7790	4927	63.2	325	4.2	380	4.9	1546	19.8	564	7.2	48	0.6
DEC-2025	7833	4965	63.4	321	4.1	371	4.7	1560	19.9	570	7.3	46	0.6

**n** is number of participants on the specified regimen class in the specified month

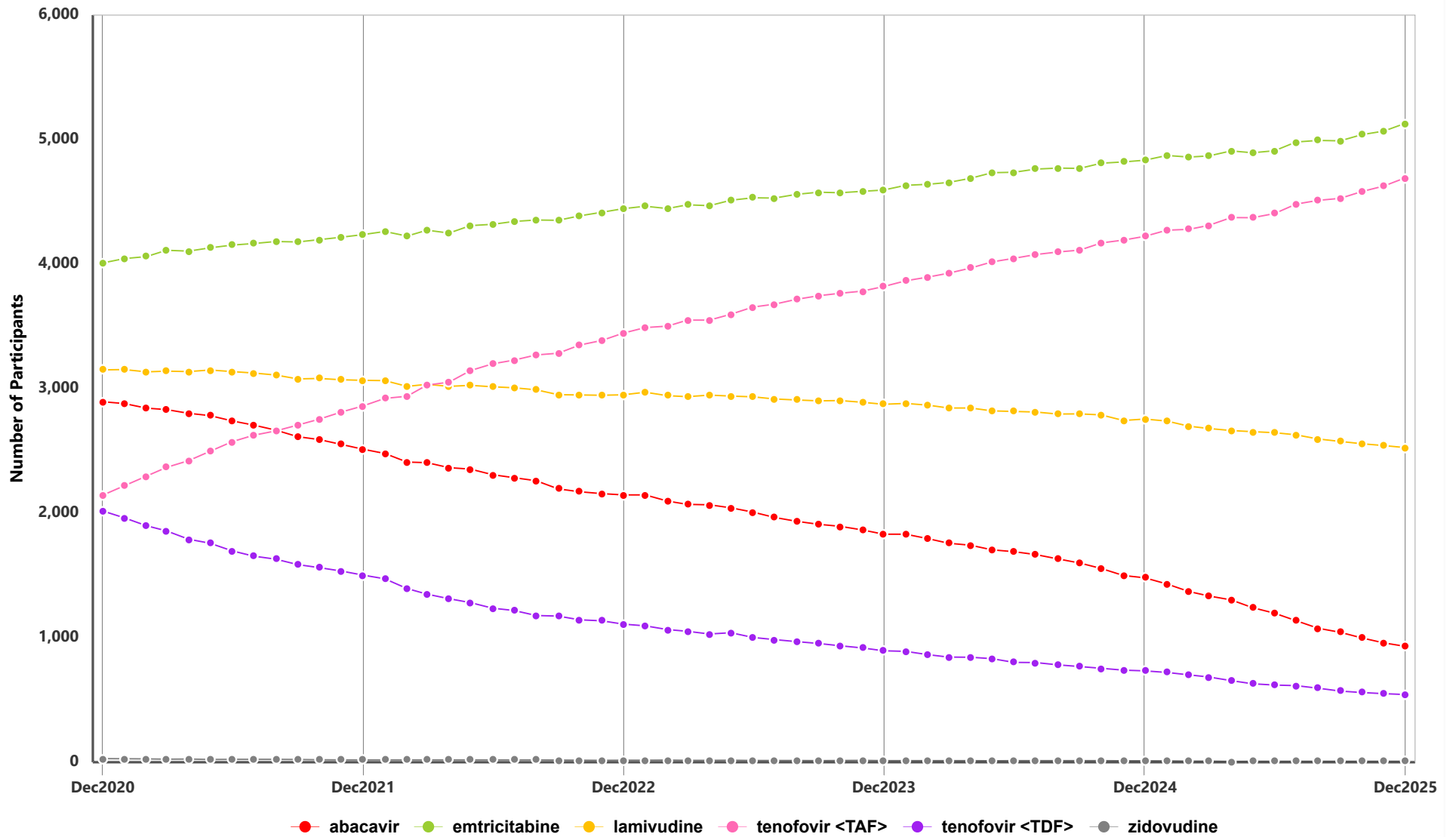
**%** is ratio of **n** and total number of participants on antiretroviral treatment in the specified month

**INSTI:** Integrase Inhibitor, **PI:** Protease Inhibitor, **NNRTI:** Non-Nucleoside Analogue Reverse Transcriptase Inhibitor,

**N(t)RTI:** Nucleos(t)ide Analogue Reverse Transcriptase Inhibitor



1.4 Distribution of Participants on Nucleos(t)ide Analogue Reverse Transcriptase Inhibitors by INGREDIENT  
December 2020 - December 2025



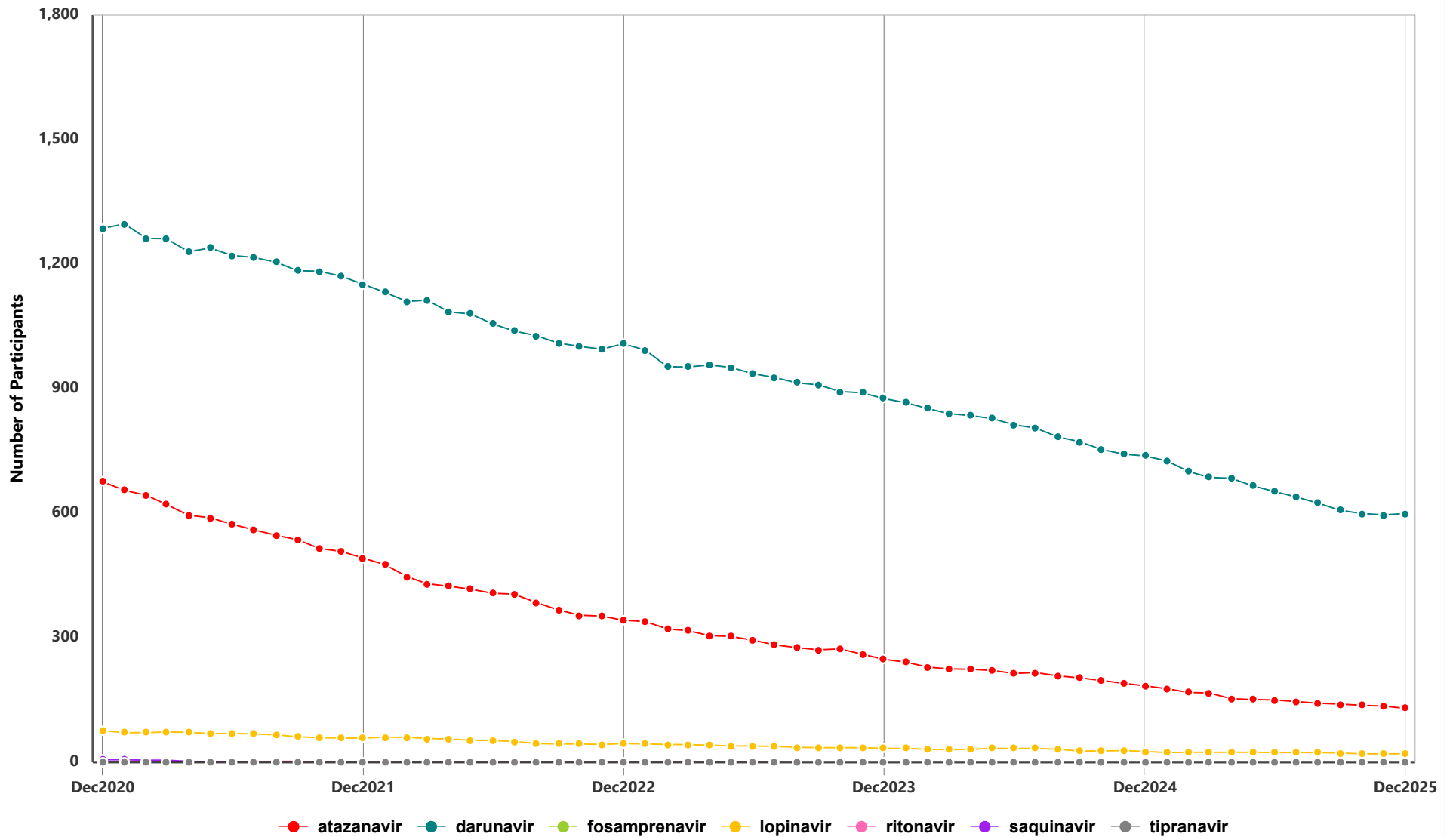
**1.5 Number of Participants on Nucleos(t)ide Analogue Reverse Transcriptase Inhibitors by INGREDIENT**

MON-YYYY	Total Participants	abacavir		emtricitabine		lamivudine		tenofovir <TAF>		tenofovir <TDF>		zidovudine	
		n	%	n	%	n	%	n	%	n	%	n	%
JAN-2024	<b>7502</b>	1831	24.4	4633	61.8	2881	38.4	3866	51.5	890	11.9	13	0.2
FEB-2024	<b>7504</b>	1795	23.9	4641	61.9	2868	38.2	3896	51.9	864	11.5	13	0.2
MAR-2024	<b>7493</b>	1759	23.5	4656	62.1	2845	38.0	3927	52.4	844	11.3	13	0.2
APR-2024	<b>7525</b>	1742	23.2	4690	62.3	2844	37.8	3968	52.7	843	11.2	13	0.2
MAY-2024	<b>7544</b>	1706	22.6	4734	62.8	2822	37.4	4018	53.3	832	11.0	12	0.2
JUN-2024	<b>7544</b>	1691	22.4	4738	62.8	2817	37.3	4047	53.7	801	10.6	13	0.2
JUL-2024	<b>7570</b>	1667	22.0	4763	62.9	2812	37.2	4077	53.9	800	10.6	13	0.2
AUG-2024	<b>7563</b>	1633	21.6	4771	63.1	2796	37.0	4097	54.2	782	10.3	13	0.2
SEP-2024	<b>7551</b>	1600	21.2	4769	63.2	2797	37.0	4113	54.5	768	10.2	13	0.2
OCT-2024	<b>7577</b>	1556	20.5	4810	63.5	2789	36.8	4170	55.0	754	10.0	13	0.2
NOV-2024	<b>7555</b>	1499	19.8	4821	63.8	2744	36.3	4193	55.5	739	9.8	11	0.2
DEC-2024	<b>7572</b>	1481	19.6	4835	63.9	2756	36.4	4223	55.8	734	9.7	11	0.2
JAN-2025	<b>7591</b>	1431	18.9	4873	64.2	2740	36.1	4273	56.3	721	9.5	10	0.1
FEB-2025	<b>7547</b>	1370	18.2	4860	64.4	2698	35.8	4280	56.7	701	9.3	8	0.1
MAR-2025	<b>7537</b>	1335	17.7	4869	64.6	2680	35.6	4312	57.2	684	9.1	8	0.1
APR-2025	<b>7557</b>	1304	17.3	4909	65.0	2664	35.3	4374	57.9	655	8.7	6	0.1
MAY-2025	<b>7537</b>	1242	16.5	4894	64.9	2654	35.2	4373	58.0	630	8.4	7	0.1
JUN-2025	<b>7540</b>	1196	15.9	4910	65.1	2647	35.1	4406	58.4	620	8.2	7	0.1
JUL-2025	<b>7593</b>	1137	15.0	4981	65.6	2629	34.6	4482	59.0	615	8.1	7	0.1
AUG-2025	<b>7579</b>	1076	14.2	4993	65.9	2596	34.3	4512	59.5	594	7.8	7	0.1
SEP-2025	<b>7556</b>	1043	13.8	4990	66.0	2576	34.1	4528	59.9	571	7.6	7	0.1
OCT-2025	<b>7585</b>	998	13.2	5039	66.4	2558	33.7	4582	60.4	560	7.4	7	0.1
NOV-2025	<b>7598</b>	958	12.6	5068	66.7	2543	33.5	4627	60.9	550	7.2	7	0.1
DEC-2025	<b>7635</b>	930	12.2	5130	67.2	2527	33.1	4693	61.5	544	7.1	7	0.1

**n** is defined as number of participants on antiretroviral treatment which contains the INGREDIENT;  
**%** is calculated as ratio of "n" and number of participants whose treatment is of the given antiretroviral drug class



1.6 Distribution of Participants on Protease Inhibitors by INGREDIENT  
December 2020 - December 2025

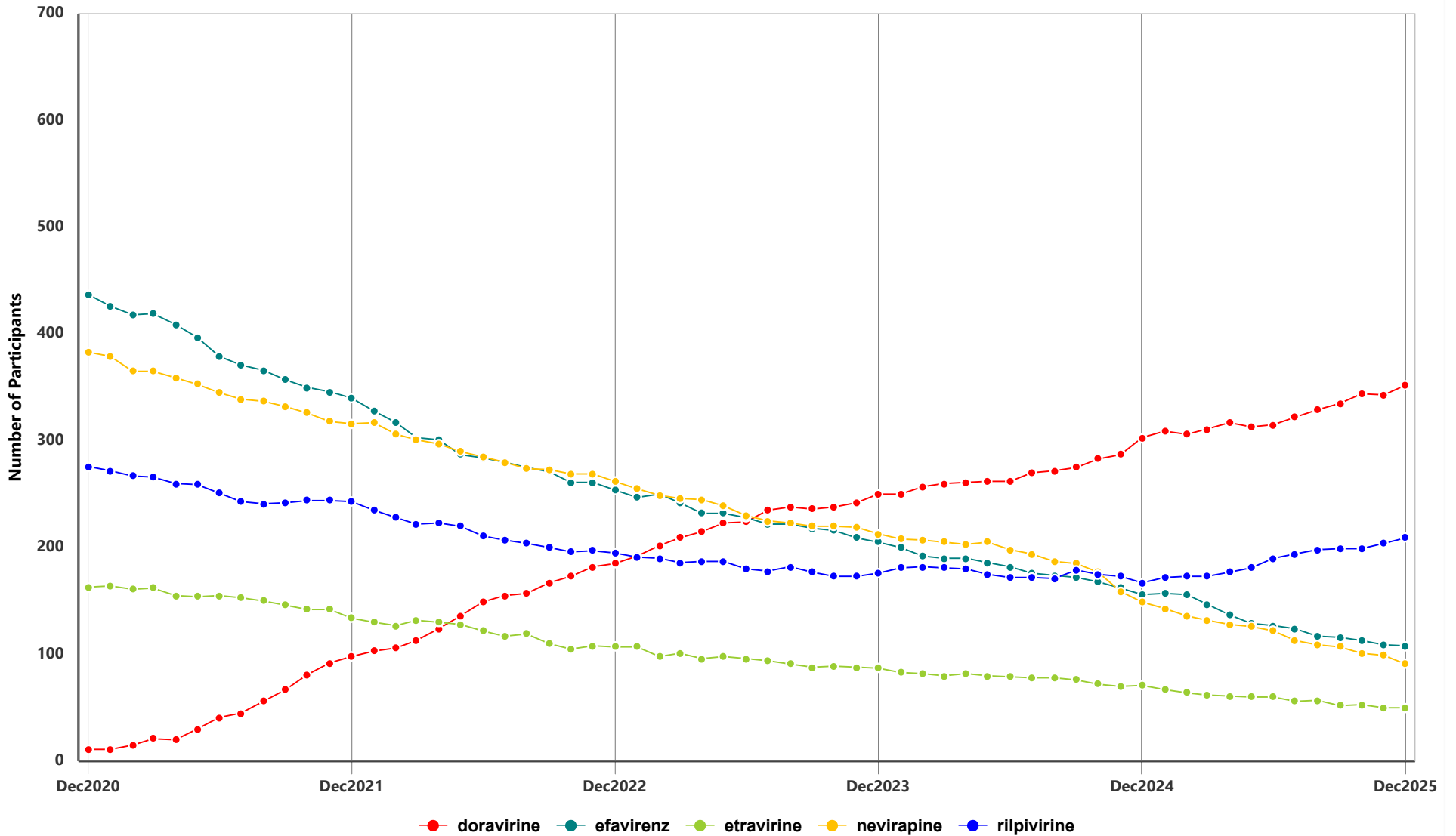


**1.7 Number of Participants on Protease Inhibitors by INGREDIENT**

MON-YYYY	Total Participants	atazanavir		darunavir		lopinavir		ritonavir		tipranavir	
		n	%	n	%	n	%	n	%	n	%
JAN-2024	1138	241	21.2	866	76.1	33	2.9	0	0.0	0	0.00
FEB-2024	1111	229	20.6	852	76.7	31	2.8	0	0.0	0	0.00
MAR-2024	1094	225	20.6	840	76.8	30	2.7	0	0.0	0	0.00
APR-2024	1088	224	20.6	835	76.8	31	2.9	0	0.0	0	0.00
MAY-2024	1081	221	20.4	828	76.6	33	3.1	0	0.0	0	0.00
JUN-2024	1059	214	20.2	813	76.8	33	3.1	0	0.0	0	0.00
JUL-2024	1052	216	20.5	805	76.5	33	3.1	0	0.0	0	0.00
AUG-2024	1021	208	20.4	784	76.8	31	3.0	0	0.0	0	0.00
SEP-2024	1001	203	20.3	772	77.1	27	2.7	0	0.0	0	0.00
OCT-2024	977	197	20.2	754	77.2	27	2.8	0	0.0	0	0.00
NOV-2024	957	190	19.9	742	77.5	28	2.9	0	0.0	0	0.00
DEC-2024	947	184	19.4	738	77.9	26	2.8	0	0.0	0	0.00
JAN-2025	922	177	19.2	726	78.7	23	2.5	0	0.0	0	0.00
FEB-2025	891	168	18.9	700	78.6	24	2.7	0	0.0	0	0.00
MAR-2025	875	167	19.1	686	78.4	24	2.7	0	0.0	0	0.00
APR-2025	860	153	17.8	684	79.5	24	2.8	0	0.0	0	0.00
MAY-2025	840	151	18.0	666	79.3	24	2.9	0	0.0	0	0.00
JUN-2025	823	150	18.2	652	79.2	23	2.8	0	0.0	0	0.00
JUL-2025	806	146	18.1	639	79.3	23	2.9	0	0.0	0	0.00
AUG-2025	788	142	18.0	624	79.2	23	2.9	0	0.0	0	0.00
SEP-2025	768	140	18.2	607	79.0	22	2.9	0	0.0	0	0.00
OCT-2025	755	137	18.2	599	79.3	20	2.7	0	0.0	0	0.00
NOV-2025	749	135	18.0	596	79.6	20	2.7	0	0.0	0	0.00
DEC-2025	748	130	17.4	599	80.1	20	2.7	0	0.0	0	0.00

n is defined as number of participants on antiretroviral treatment which contains the INGREDIENT;  
 % is calculated as ratio of "n" and number of participants whose treatment is of the given antiretroviral drug class  
 Ritonavir - greater than 400 mg total daily dose

1.8 Distribution of Participants on Non-Nucleoside Analogue Reverse Transcriptase Inhibitors by INGREDIENT  
December 2020 - December 2025

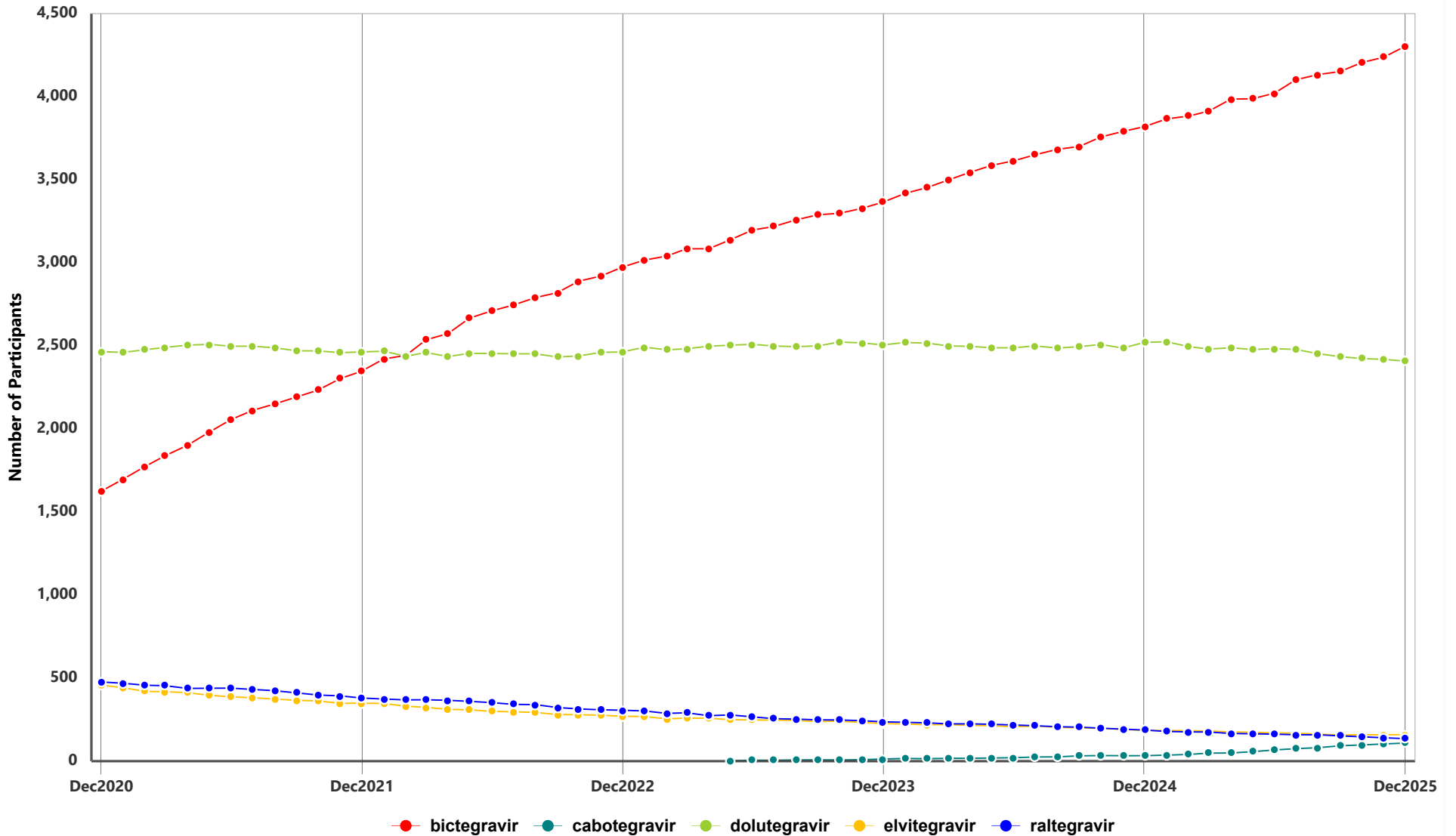


**1.9 Number of Participants on Non-Nucleoside Analogue Reverse Transcriptase Inhibitors by INGREDIENT**

MON-YYYY	Total Participants	doravirine n %	efavirenz n %	etravirine n %	nevirapine n %	rilpivirine n %
JAN-2024	921	250 27.1	200 21.7	83 9.0	208 22.6	181 19.7
FEB-2024	919	257 28.0	192 20.9	82 8.9	207 22.5	182 19.8
MAR-2024	914	260 28.5	190 20.8	80 8.8	205 22.4	181 19.8
APR-2024	915	261 28.5	190 20.8	82 9.0	203 22.2	180 19.7
MAY-2024	906	262 28.9	186 20.5	80 8.8	205 22.6	175 19.3
JUN-2024	893	262 29.3	182 20.4	79 8.9	198 22.2	172 19.3
JUL-2024	890	270 30.3	176 19.8	78 8.8	194 21.8	172 19.3
AUG-2024	879	272 30.9	174 19.8	78 8.9	187 21.3	171 19.5
SEP-2024	886	275 31.0	172 19.4	76 8.6	185 20.9	179 20.2
OCT-2024	871	283 32.5	168 19.3	72 8.3	177 20.3	175 20.1
NOV-2024	850	287 33.8	162 19.1	70 8.2	159 18.7	173 20.4
DEC-2024	844	303 35.9	156 18.5	71 8.4	149 17.7	167 19.8
JAN-2025	844	309 36.6	157 18.6	67 7.9	143 16.9	172 20.4
FEB-2025	834	306 36.7	156 18.7	64 7.7	136 16.3	173 20.7
MAR-2025	823	311 37.8	147 17.9	62 7.5	132 16.0	173 21.0
APR-2025	818	317 38.8	137 16.8	61 7.5	128 15.7	177 21.6
MAY-2025	809	313 38.7	129 16.0	60 7.4	126 15.6	181 22.4
JUN-2025	812	315 38.8	127 15.6	60 7.4	122 15.0	190 23.4
JUL-2025	809	322 39.8	124 15.3	56 6.9	113 14.0	194 24.0
AUG-2025	805	329 40.9	117 14.5	57 7.1	109 13.5	198 24.6
SEP-2025	806	335 41.6	116 14.4	52 6.5	107 13.3	199 24.7
OCT-2025	808	344 42.6	113 14.0	53 6.6	101 12.5	199 24.6
NOV-2025	803	343 42.7	109 13.6	50 6.2	99 12.3	204 25.4
DEC-2025	805	352 43.7	108 13.4	50 6.2	91 11.3	209 26.0

**n** is defined as number of participants on antiretroviral treatment which contains the INGREDIENT;  
**%** is calculated as ratio of "n" and number of participants whose treatment is of the given antiretroviral drug class

1.10 Distribution of Participants on Integrase Inhibitors by INGREDIENT  
December 2020 - December 2025



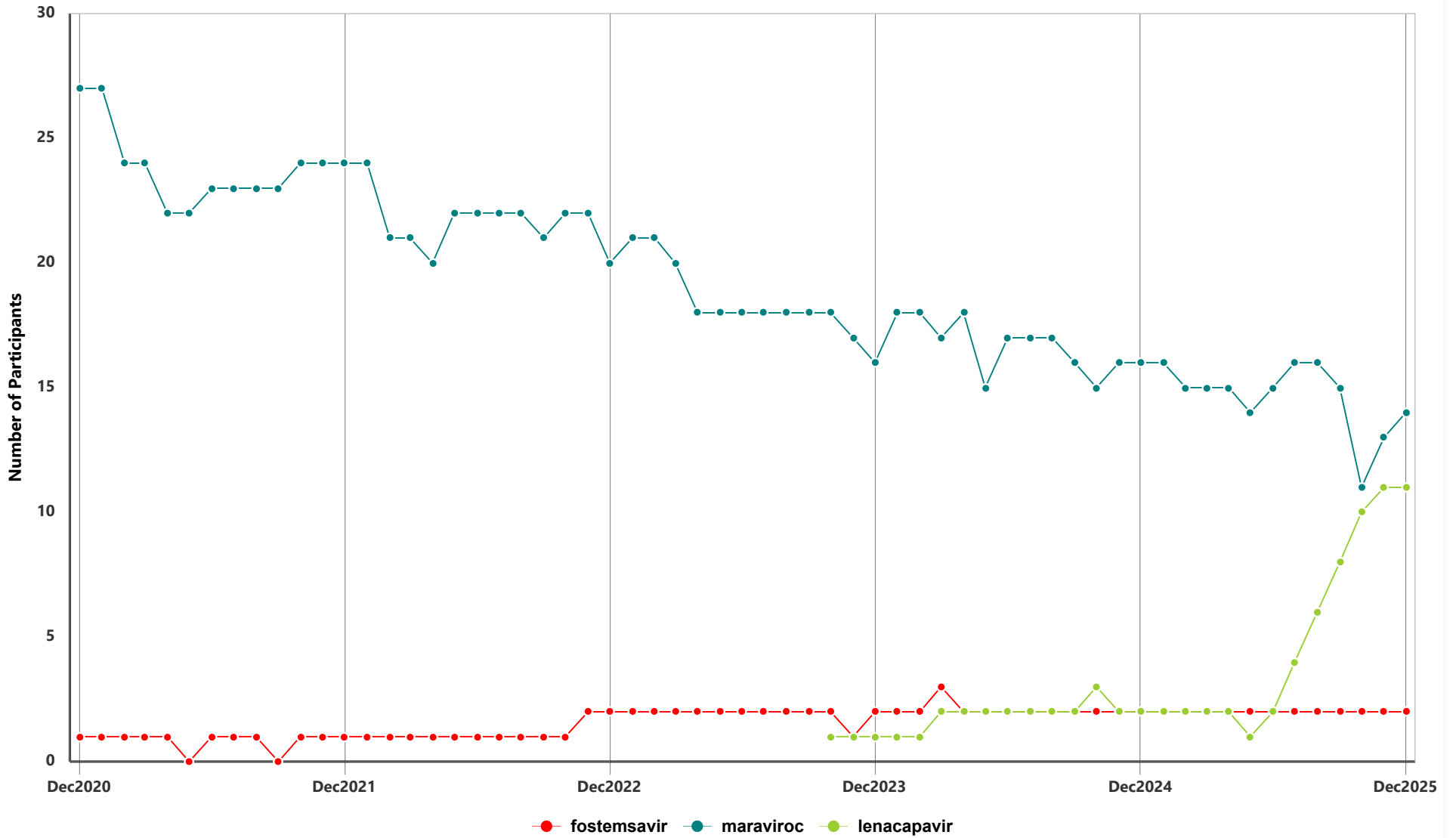
**1.11 Number of Participants on Integrase Inhibitors by INGREDIENT**

MON-YYYY	Total Participants	bictegravir n %	cabotegravir n %	dolutegravir n %	elvitegravir n %	raltegravir n %
JAN-2024	<b>6389</b>	3418 53.5	16 0.3	2520 39.4	224 3.5	234 3.7
FEB-2024	<b>6417</b>	3453 53.8	15 0.2	2516 39.2	219 3.4	231 3.6
MAR-2024	<b>6435</b>	3498 54.4	17 0.3	2500 38.9	220 3.4	225 3.5
APR-2024	<b>6483</b>	3545 54.7	17 0.3	2497 38.5	216 3.3	225 3.5
MAY-2024	<b>6511</b>	3586 55.1	19 0.3	2488 38.2	213 3.3	222 3.4
JUN-2024	<b>6528</b>	3614 55.4	21 0.3	2488 38.1	207 3.2	218 3.3
JUL-2024	<b>6584</b>	3650 55.4	25 0.4	2500 38.0	212 3.2	213 3.2
AUG-2024	<b>6593</b>	3683 55.9	26 0.4	2487 37.7	204 3.1	207 3.1
SEP-2024	<b>6610</b>	3700 56.0	32 0.5	2495 37.8	200 3.0	205 3.1
OCT-2024	<b>6680</b>	3757 56.2	34 0.5	2508 37.5	198 3.0	199 3.0
NOV-2024	<b>6681</b>	3791 56.7	33 0.5	2487 37.2	191 2.9	193 2.9
DEC-2024	<b>6720</b>	3819 56.8	33 0.5	2521 37.5	185 2.8	187 2.8
JAN-2025	<b>6762</b>	3866 57.2	36 0.5	2525 37.3	185 2.7	179 2.7
FEB-2025	<b>6754</b>	3883 57.5	41 0.6	2495 36.9	183 2.7	176 2.6
MAR-2025	<b>6767</b>	3913 57.8	48 0.7	2481 36.7	181 2.7	175 2.6
APR-2025	<b>6834</b>	3985 58.3	49 0.7	2488 36.4	176 2.6	167 2.4
MAY-2025	<b>6840</b>	3987 58.3	57 0.8	2478 36.2	174 2.5	165 2.4
JUN-2025	<b>6868</b>	4021 58.6	67 1.0	2483 36.2	170 2.5	162 2.4
JUL-2025	<b>6952</b>	4102 59.0	75 1.1	2478 35.6	168 2.4	159 2.3
AUG-2025	<b>6955</b>	4133 59.4	81 1.2	2453 35.3	162 2.3	159 2.3
SEP-2025	<b>6957</b>	4151 59.7	92 1.3	2435 35.0	157 2.3	152 2.2
OCT-2025	<b>7015</b>	4205 59.9	98 1.4	2424 34.6	159 2.3	147 2.1
NOV-2025	<b>7036</b>	4237 60.2	104 1.5	2418 34.4	159 2.3	141 2.0
DEC-2025	<b>7089</b>	4303 60.7	109 1.5	2408 34.0	160 2.3	136 1.9

**n** is defined as number of participants on antiretroviral treatment which contains the INGREDIENT;  
**%** is calculated as ratio of "n" and number of participants whose treatment is of the given antiretroviral drug class



1.12 Distribution of Participants on Other Antiretroviral Drug Classes by INGREDIENT  
December 2020 - December 2025





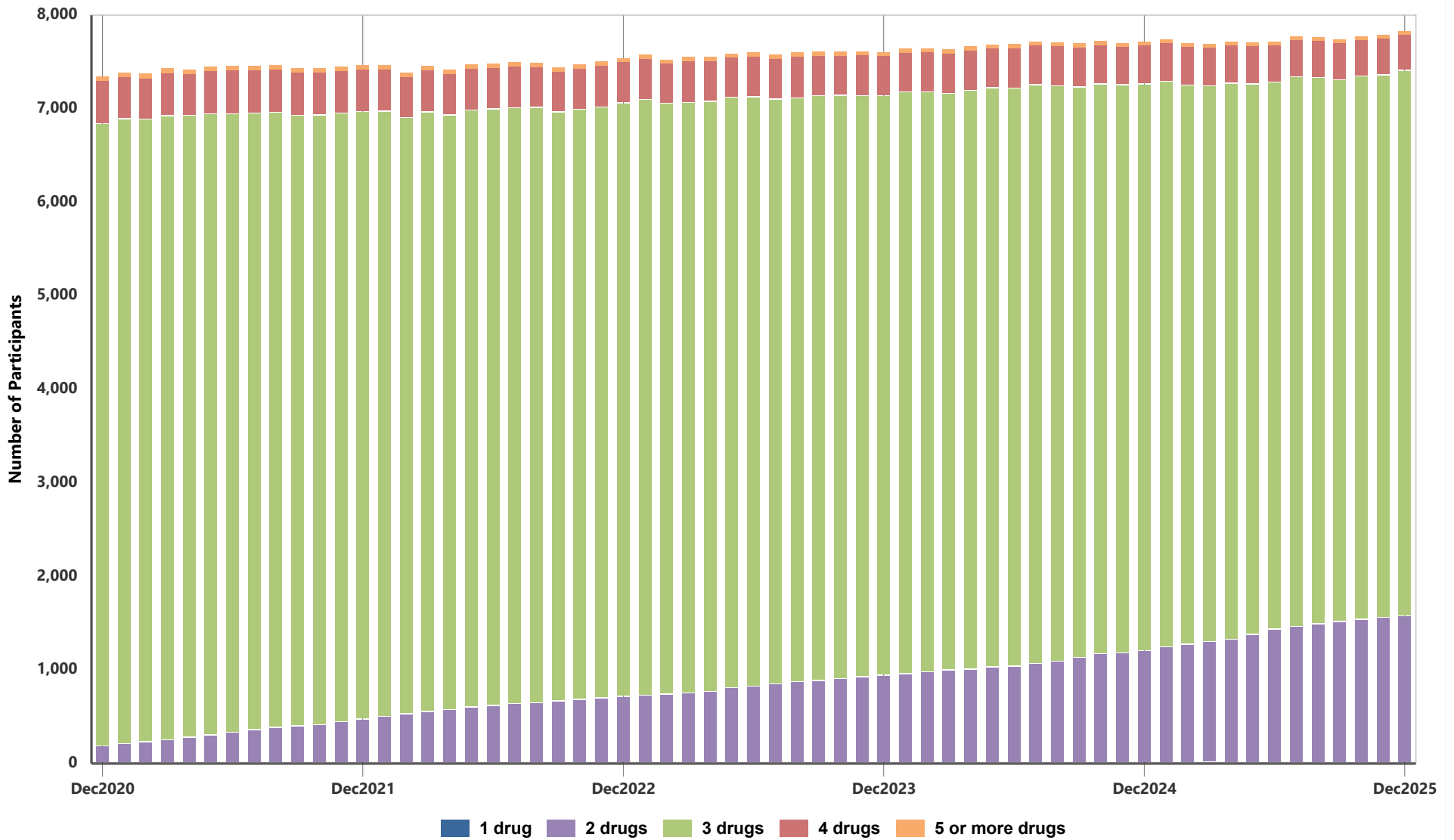
## 1.13 Number of Participants on Other Antiretroviral Drug Classes by INGREDIENT

MON-YYYY	Total Participants	fostemsavir		maraviroc		lenacapavir	
		n	%	n	%	n	%
JAN-2024	21	2	9.5	18	85.7	1	4.8
FEB-2024	21	2	9.5	18	85.7	1	4.8
MAR-2024	21	3	14.3	17	81.0	2	9.5
APR-2024	22	2	9.1	18	81.8	2	9.1
MAY-2024	19	2	10.5	15	79.0	2	10.5
JUN-2024	21	2	9.5	17	81.0	2	9.5
JUL-2024	21	2	9.5	17	81.0	2	9.5
AUG-2024	21	2	9.5	17	81.0	2	9.5
SEP-2024	20	2	10.0	16	80.0	2	10.0
OCT-2024	20	2	10.0	15	75.0	3	15.0
NOV-2024	20	2	10.0	16	80.0	2	10.0
DEC-2024	20	2	10.0	16	80.0	2	10.0
JAN-2025	20	2	10.0	16	80.0	2	10.0
FEB-2025	19	2	10.5	15	79.0	2	10.5
MAR-2025	19	2	10.5	15	79.0	2	10.5
APR-2025	19	2	10.5	15	79.0	2	10.5
MAY-2025	17	2	11.8	14	82.4	1	5.9
JUN-2025	19	2	10.5	15	79.0	2	10.5
JUL-2025	22	2	9.1	16	72.7	4	18.2
AUG-2025	24	2	8.3	16	66.7	6	25.0
SEP-2025	25	2	8.0	15	60.0	8	32.0
OCT-2025	23	2	8.7	11	47.8	10	43.5
NOV-2025	26	2	7.7	13	50.0	11	42.3
DEC-2025	27	2	7.4	14	51.9	11	40.7

n is defined as number of participants on antiretroviral treatment which contains the INGREDIENT;  
 % is calculated as ratio of "n" and number of participants whose treatment is of the given antiretroviral drug class  
 Both lenacapavir and fostemsavir are currently not on BC-CfE Formulary



1.14 Distribution of Participants on Antiretroviral Treatment by Number of Antiretrovirals  
December 2020 - December 2025



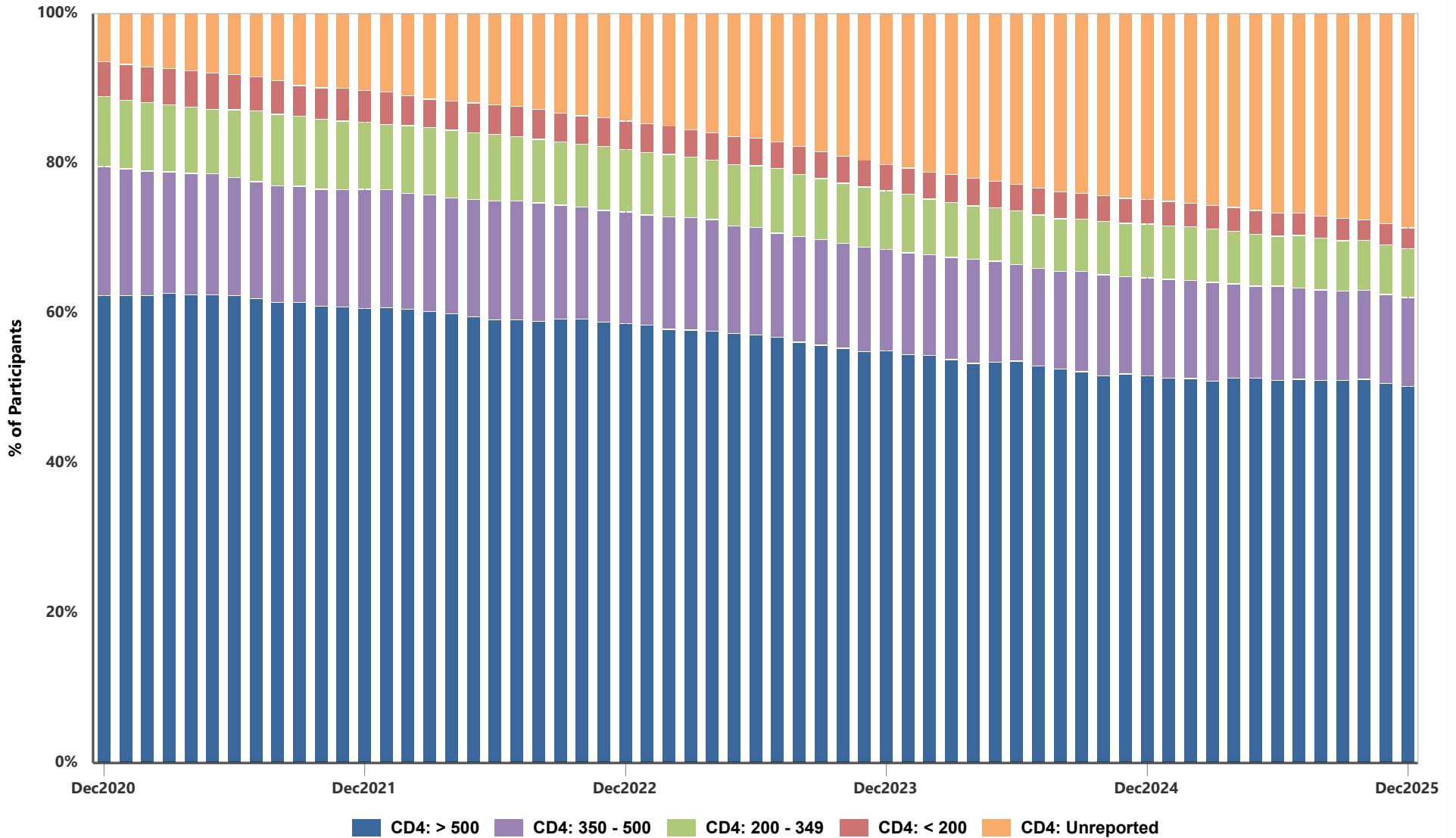
**1.15 Distribution of Participants on Antiretroviral Treatment by Number of Antiretrovirals**

MON-YYYY	Total Participants	1 drug		2 drugs		3 drugs		4 drugs		5 or more drugs	
		n	%	n	%	n	%	n	%	n	%
JAN-2024	7642	2	0.0	952	12.5	6214	81.3	432	5.7	42	0.6
FEB-2024	7647	3	0.0	971	12.7	6198	81.1	436	5.7	39	0.5
MAR-2024	7636	2	0.0	991	13.0	6159	80.7	440	5.8	44	0.6
APR-2024	7670	2	0.0	1001	13.1	6184	80.6	437	5.7	46	0.6
MAY-2024	7687	2	0.0	1024	13.3	6188	80.5	434	5.7	39	0.5
JUN-2024	7687	1	0.0	1034	13.5	6181	80.4	429	5.6	42	0.6
JUL-2024	7718	2	0.0	1061	13.8	6184	80.1	434	5.6	37	0.5
AUG-2024	7709	2	0.0	1082	14.0	6155	79.8	431	5.6	39	0.5
SEP-2024	7697	2	0.0	1125	14.6	6101	79.3	426	5.5	43	0.6
OCT-2024	7725	1	0.0	1169	15.1	6087	78.8	427	5.5	41	0.5
NOV-2024	7703	1	0.0	1177	15.3	6069	78.8	417	5.4	39	0.5
DEC-2024	7720	2	0.0	1200	15.5	6054	78.4	424	5.5	40	0.5
JAN-2025	7739	2	0.0	1235	16.0	6047	78.1	416	5.4	39	0.5
FEB-2025	7696	2	0.0	1265	16.4	5977	77.7	414	5.4	38	0.5
MAR-2025	7689	4	0.1	1292	16.8	5942	77.3	414	5.4	37	0.5
APR-2025	7719	3	0.0	1321	17.1	5939	76.9	419	5.4	37	0.5
MAY-2025	7705	4	0.1	1370	17.8	5882	76.3	410	5.3	39	0.5
JUN-2025	7713	4	0.1	1428	18.5	5845	75.8	396	5.1	40	0.5
JUL-2025	7772	2	0.0	1460	18.8	5874	75.6	399	5.1	37	0.5
AUG-2025	7762	5	0.1	1482	19.1	5839	75.2	396	5.1	40	0.5
SEP-2025	7737	3	0.0	1508	19.5	5791	74.9	398	5.1	37	0.5
OCT-2025	7776	2	0.0	1534	19.7	5806	74.7	395	5.1	39	0.5
NOV-2025	7790	2	0.0	1553	19.9	5802	74.5	393	5.0	40	0.5
DEC-2025	7833	2	0.0	1567	20.0	5833	74.5	393	5.0	38	0.5

n is the number of individual drugs in antiretroviral treatment regimen (excluding low dose ritonavir and cobicistat used for pharmacokinetic boosting)



1.16 Percent Distribution of Active Participants by CD4 Count  
December 2020 - December 2025





1.17 Distribution of Active Participants by CD4 Count

Month	# of Pts with CD4: Unreported	# of Pts with CD4: < 200	# of Pts with CD4: 200 - 349	# of Pts with CD4: 350 - 500	# of Pts with CD4: > 500
JAN-2024	1399	238	529	916	3679
FEB-2024	1438	242	503	911	3673
MAR-2024	1464	255	498	924	3649
APR-2024	1504	253	486	944	3627
MAY-2024	1536	248	486	923	3661
JUN-2024	1571	247	493	886	3680
JUL-2024	1631	248	493	912	3682
AUG-2024	1665	251	491	910	3660
SEP-2024	1680	241	489	935	3639
OCT-2024	1715	243	499	948	3624
NOV-2024	1743	234	505	917	3652
DEC-2024	1768	232	508	928	3658
JAN-2025	1790	233	509	939	3650
FEB-2025	1805	223	511	930	3640
MAR-2025	1826	225	508	934	3620
APR-2025	1855	230	500	902	3667
MAY-2025	1877	229	493	875	3654
JUN-2025	1915	223	477	899	3655
JUL-2025	1932	215	510	883	3696
AUG-2025	1975	217	503	877	3714
SEP-2025	1997	220	492	869	3718
OCT-2025	2027	202	493	871	3758
NOV-2025	2087	209	488	879	3747
DEC-2025	2150	209	488	890	3762

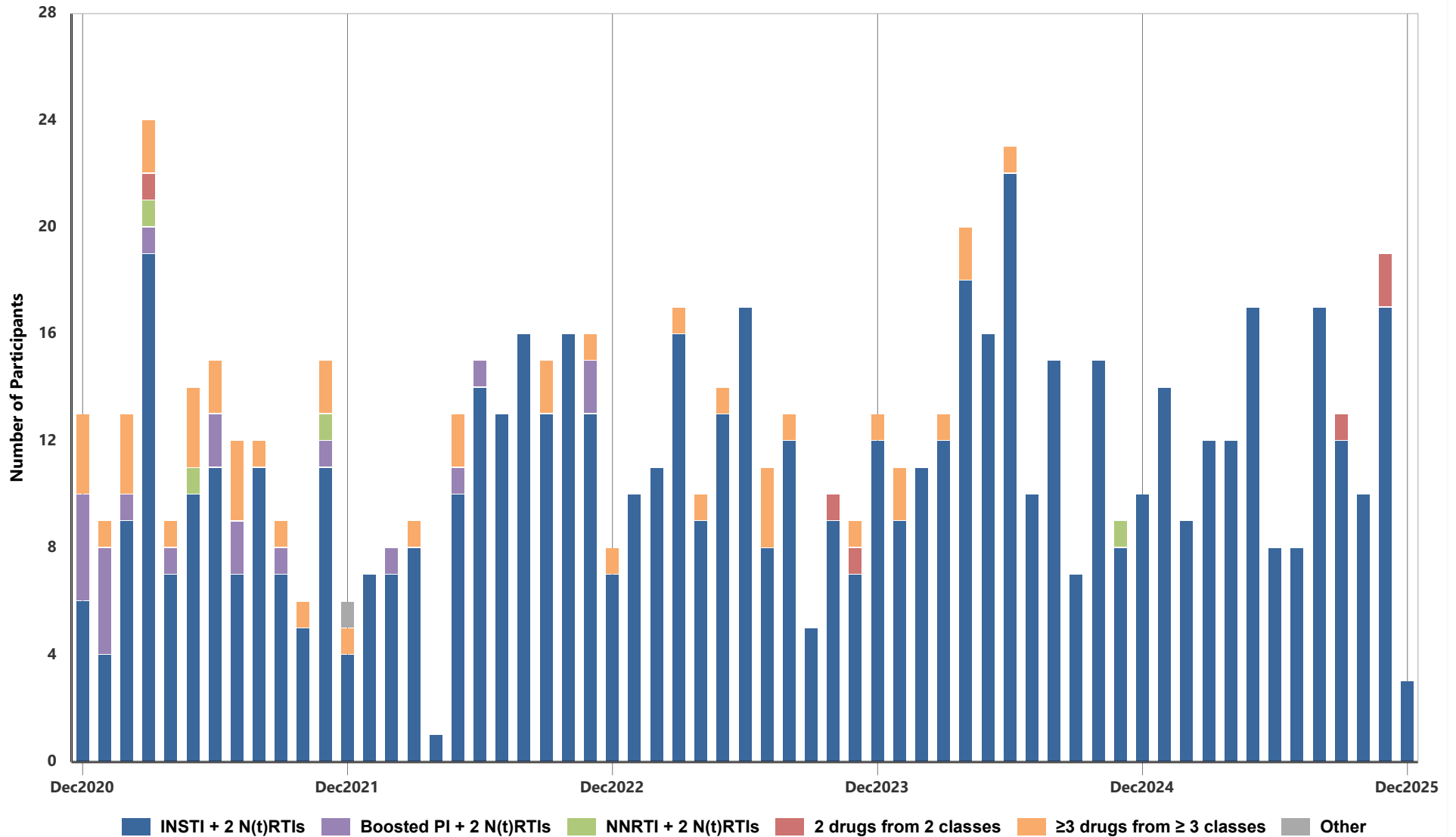
CD4 value (cells/μL) as per the most recent test within the past 12 months

CD4 Unreported: CD4 not tested or reported within the past 12 months

Active Participants are participants with antiretroviral treatment in the month based on dispensing record



1.18 Initial Regimen Composition for Antiretroviral Treatment Naïve Participants Starting Treatment  
December 2020 - December 2025



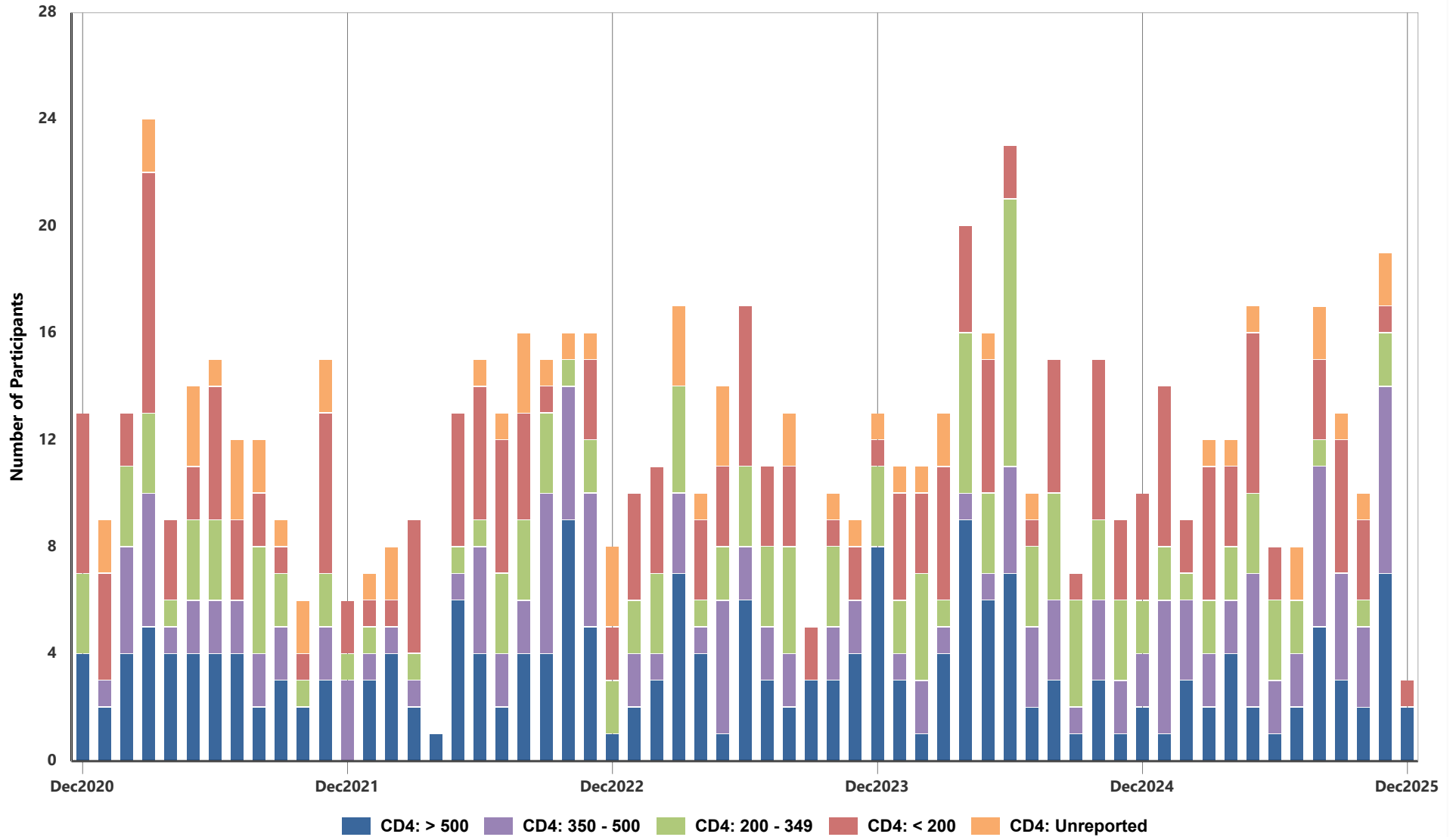
**1.19 Initial Regimen Composition for Antiretroviral Treatment Naïve Participants Starting Treatment**

MON-YYYY	Total	INSTI 2 N(t)RTIs		Boosted PI 2 N(t)RTIs		NNRTI 2 N(t)RTIs		2 drugs from 2 classes		≥3 drugs from ≥3 classes		Other	
		n	%	n	%	n	%	n	%	n	%	n	%
JAN-2024	11	9	81.8	0	0.0	0	0.0	0	0.0	2	18.2	0	0.0
FEB-2024	11	11	100.0	0	0.0	0	0.0	0	0.0	0	0.0	0	0.0
MAR-2024	13	12	92.3	0	0.0	0	0.0	0	0.0	1	7.7	0	0.0
APR-2024	20	18	90.0	0	0.0	0	0.0	0	0.0	2	10.0	0	0.0
MAY-2024	16	16	100.0	0	0.0	0	0.0	0	0.0	0	0.0	0	0.0
JUN-2024	23	22	95.7	0	0.0	0	0.0	0	0.0	1	4.3	0	0.0
JUL-2024	10	10	100.0	0	0.0	0	0.0	0	0.0	0	0.0	0	0.0
AUG-2024	15	15	100.0	0	0.0	0	0.0	0	0.0	0	0.0	0	0.0
SEP-2024	7	7	100.0	0	0.0	0	0.0	0	0.0	0	0.0	0	0.0
OCT-2024	15	15	100.0	0	0.0	0	0.0	0	0.0	0	0.0	0	0.0
NOV-2024	9	8	88.9	0	0.0	1	11.1	0	0.0	0	0.0	0	0.0
DEC-2024	10	10	100.0	0	0.0	0	0.0	0	0.0	0	0.0	0	0.0
JAN-2025	14	14	100.0	0	0.0	0	0.0	0	0.0	0	0.0	0	0.0
FEB-2025	9	9	100.0	0	0.0	0	0.0	0	0.0	0	0.0	0	0.0
MAR-2025	12	12	100.0	0	0.0	0	0.0	0	0.0	0	0.0	0	0.0
APR-2025	12	12	100.0	0	0.0	0	0.0	0	0.0	0	0.0	0	0.0
MAY-2025	17	17	100.0	0	0.0	0	0.0	0	0.0	0	0.0	0	0.0
JUN-2025	8	8	100.0	0	0.0	0	0.0	0	0.0	0	0.0	0	0.0
JUL-2025	8	8	100.0	0	0.0	0	0.0	0	0.0	0	0.0	0	0.0
AUG-2025	17	17	100.0	0	0.0	0	0.0	0	0.0	0	0.0	0	0.0
SEP-2025	13	12	92.3	0	0.0	0	0.0	1	7.7	0	0.0	0	0.0
OCT-2025	10	10	100.0	0	0.0	0	0.0	0	0.0	0	0.0	0	0.0
NOV-2025	19	17	89.5	0	0.0	0	0.0	2	10.5	0	0.0	0	0.0
DEC-2025	3	3	100.0	0	0.0	0	0.0	0	0.0	0	0.0	0	0.0

**INSTI:** Integrase Inhibitor, **PI:** Protease Inhibitor, **NNRTI:** Non-Nucleoside Analogue Reverse Transcriptase Inhibitor, **N(t)RTI:** Nucleos(t)ide Analogue Reverse Transcriptase Inhibitor  
**n** is number of participants on the specified regimen category in the specified month  
**%** is ratio of n and total number of participants initiating antiretroviral treatment in the specified month



1.20 Pre-entry CD4 for Antiretroviral Treatment Naïve Participants in the HIV Treatment Program  
December 2020 - December 2025



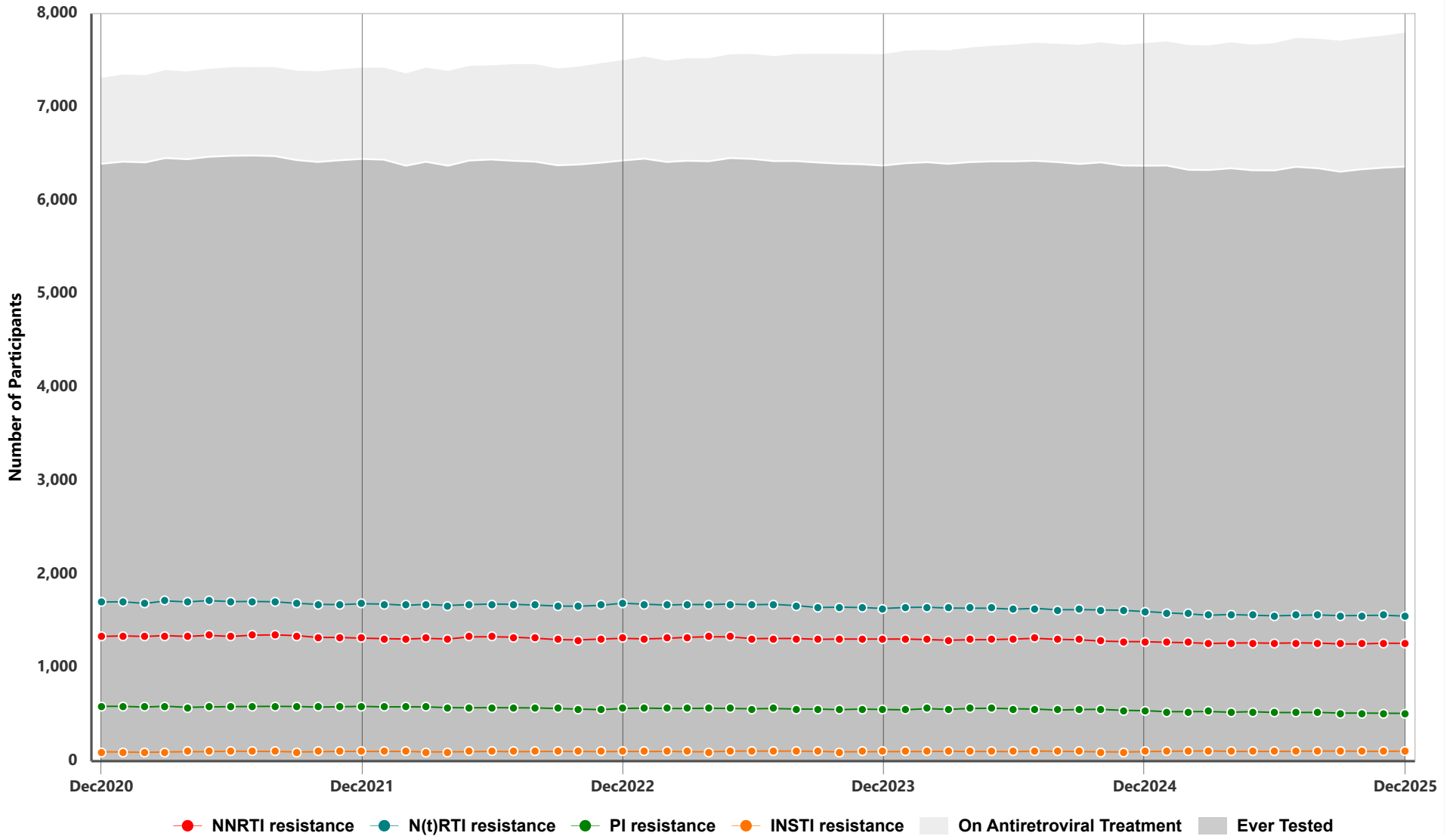
**1.21 Pre-entry CD4 for Antiretroviral Treatment Naive Participants in the HIV Treatment Program**

MON-YYYY	# of First Starts	# of Pts with CD4: Unreported		# of Pts with CD4: < 200		# of Pts with CD4: 200 - 349		# of Pts with CD4: 350 - 500		# of Pts with CD4: > 500	
		n	%	n	%	n	%	n	%	n	%
JAN-2024	11	1	9.1	4	36.4	2	18.2	1	9.1	3	27.3
FEB-2024	11	1	9.1	3	27.3	4	36.4	2	18.2	1	9.1
MAR-2024	13	2	15.4	5	38.5	1	7.7	1	7.7	4	30.8
APR-2024	20	0	0.0	4	20.0	6	30.0	1	5.0	9	45.0
MAY-2024	16	1	6.3	5	31.3	3	18.8	1	6.3	6	37.5
JUN-2024	23	0	0.0	2	8.7	10	43.5	4	17.4	7	30.4
JUL-2024	10	1	10.0	1	10.0	3	30.0	3	30.0	2	20.0
AUG-2024	15	0	0.0	5	33.3	4	26.7	3	20.0	3	20.0
SEP-2024	7	0	0.0	1	14.3	4	57.1	1	14.3	1	14.3
OCT-2024	15	0	0.0	6	40.0	3	20.0	3	20.0	3	20.0
NOV-2024	9	0	0.0	3	33.3	3	33.3	2	22.2	1	11.1
DEC-2024	10	0	0.0	4	40.0	2	20.0	2	20.0	2	20.0
JAN-2025	14	0	0.0	6	42.9	2	14.3	5	35.7	1	7.1
FEB-2025	9	0	0.0	2	22.2	1	11.1	3	33.3	3	33.3
MAR-2025	12	1	8.3	5	41.7	2	16.7	2	16.7	2	16.7
APR-2025	12	1	8.3	3	25.0	2	16.7	2	16.7	4	33.3
MAY-2025	17	1	5.9	6	35.3	3	17.7	5	29.4	2	11.8
JUN-2025	8	0	0.0	2	25.0	3	37.5	2	25.0	1	12.5
JUL-2025	8	2	25.0	0	0.0	2	25.0	2	25.0	2	25.0
AUG-2025	17	2	11.8	3	17.7	1	5.9	6	35.3	5	29.4
SEP-2025	13	1	7.7	5	38.5	0	0.0	4	30.8	3	23.1
OCT-2025	10	1	10.0	3	30.0	1	10.0	3	30.0	2	20.0
NOV-2025	19	2	10.5	1	5.3	2	10.5	7	36.8	7	36.8
DEC-2025	3	0	0.0	1	33.3	0	0.0	0	0.0	2	66.7

**First Starts** defined as participants starting antiretroviral treatment in the specified month for the first time (antiretroviral treatment naive)  
**Pre-entry CD4** (cells/ $\mu$ L) is defined as most recent CD4 test before antiretroviral treatment start



1.22 Antiretroviral Resistance by Drug Class Among Participants on Antiretroviral Treatment  
December 2020 - December 2025



**1.23 Antiretroviral Resistance by Drug Class Among Participants on Antiretroviral Treatment**

MON-YYYY	On Antiretroviral (ARV) Treatment	Ever Tested	NNRTI		N(t)RTI		PI		INSTI	
			n	%	n	%	n	%	n	%
JAN-2024	7613	6399	1306	20.4	1645	25.7	549	8.6	103	1.6
FEB-2024	7620	6409	1301	20.3	1647	25.7	562	8.8	103	1.6
MAR-2024	7616	6393	1294	20.2	1638	25.6	555	8.7	106	1.7
APR-2024	7647	6411	1299	20.3	1637	25.5	563	8.8	103	1.6
MAY-2024	7666	6419	1301	20.3	1637	25.5	566	8.8	104	1.6
JUN-2024	7678	6419	1306	20.4	1626	25.3	560	8.7	102	1.6
JUL-2024	7697	6425	1315	20.5	1636	25.5	557	8.7	108	1.7
AUG-2024	7686	6410	1304	20.3	1620	25.3	547	8.5	106	1.7
SEP-2024	7674	6391	1299	20.3	1622	25.4	553	8.7	103	1.6
OCT-2024	7702	6408	1285	20.1	1618	25.3	555	8.7	100	1.6
NOV-2024	7674	6374	1279	20.1	1614	25.3	544	8.5	98	1.5
DEC-2024	7693	6373	1279	20.1	1601	25.1	541	8.5	102	1.6
JAN-2025	7712	6374	1272	20.0	1588	24.9	529	8.3	106	1.7
FEB-2025	7673	6328	1268	20.0	1575	24.9	530	8.4	107	1.7
MAR-2025	7668	6327	1259	19.9	1561	24.7	531	8.4	109	1.7
APR-2025	7702	6345	1263	19.9	1569	24.7	524	8.3	105	1.7
MAY-2025	7677	6323	1265	20.0	1562	24.7	529	8.4	105	1.7
JUN-2025	7693	6322	1262	20.0	1555	24.6	521	8.2	105	1.7
JUL-2025	7750	6360	1265	19.9	1560	24.5	520	8.2	106	1.7
AUG-2025	7740	6344	1264	19.9	1564	24.7	522	8.2	108	1.7
SEP-2025	7719	6308	1254	19.9	1557	24.7	515	8.2	107	1.7
OCT-2025	7752	6334	1255	19.8	1558	24.6	514	8.1	106	1.7
NOV-2025	7775	6351	1262	19.9	1562	24.6	513	8.1	104	1.6
DEC-2025	7807	6363	1261	19.8	1553	24.4	511	8.0	108	1.7

**On Antiretroviral (ARV) Treatment:** based on dispensing data, participants with a record of ARV medication in the specified month and not deceased or moved out of program.

**Ever Tested:** those on ARV treatment, with at least one ARV resistance test on record in BC, up until the month of interest.

**n:** number of participants on ARV treatment who were ever tested for ARV resistance with drug resistance to  $\geq 1$  drug in the corresponding drug class in BC. Participants may have resistance to none or 1 or more drug class(es).

**%** is calculated as ratio of "n" and number of participants on ARV treatment who were ever tested for ARV resistance with drug resistance to  $\geq 1$  drug the corresponding drug class in BC.

Resistance interpretations are performed using the Stanford University HIV Drug Resistance Database Algorithm (HIVdb) version 9.8.

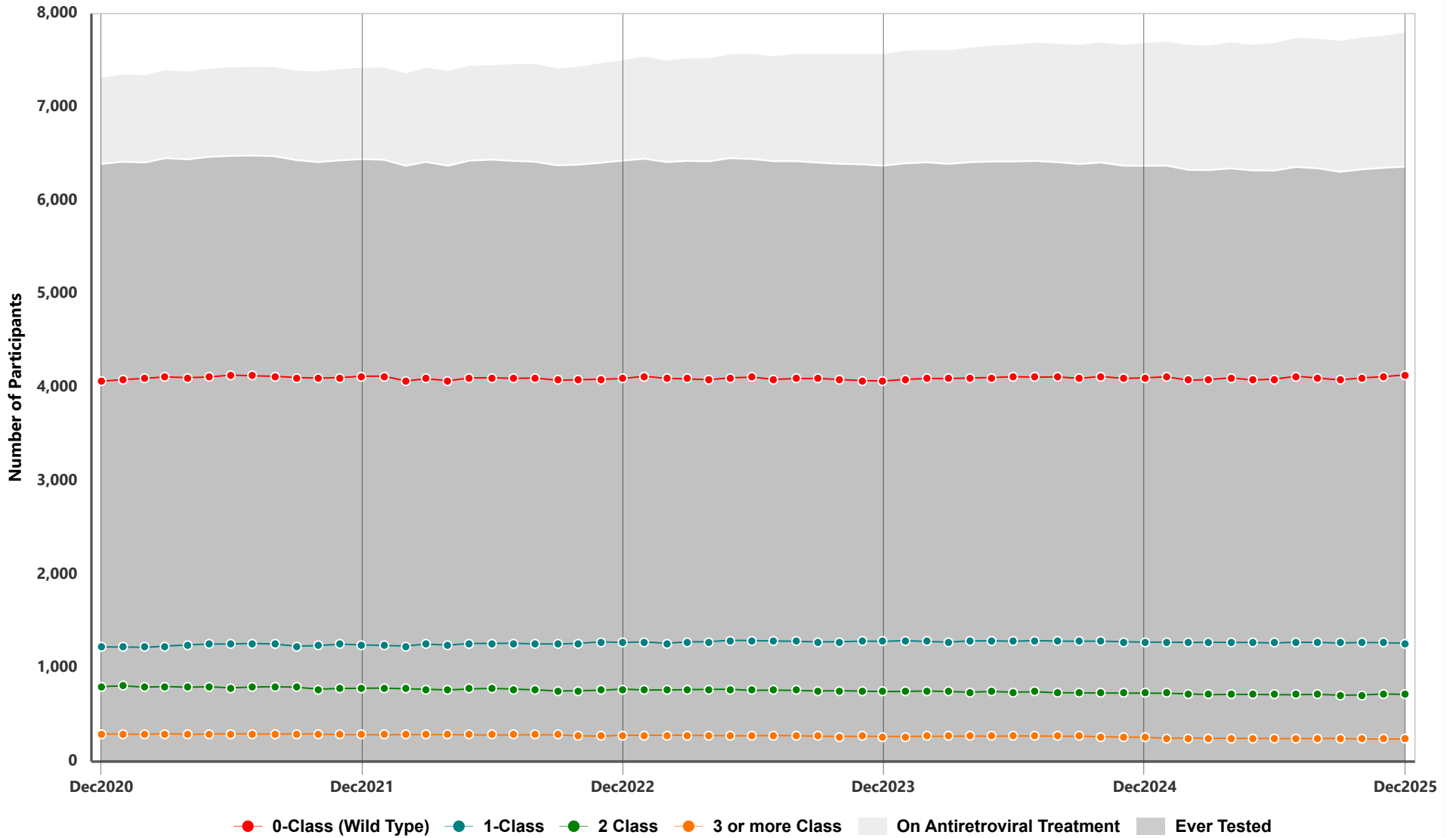
HIVdb scores  $\geq 15$  are classified as "resistant".

**INSTI:** Integrase Inhibitor, **PI:** Protease Inhibitor, **NNRTI:** Non-Nucleoside Analogue Reverse Transcriptase Inhibitor,

**N(t)RTI:** Nucleos(t)ide Analogue Reverse Transcriptase Inhibitor



1.24 Active Participants by number of Antiretroviral Drug Classes with Resistance  
December 2020 - December 2025



**1.25 Active Participants by number of Antiretroviral Drug Classes with Resistance**

MON-YYYY	On Antiretroviral Treatment	Ever Tested	0-Class (Wild Type)		1-Class		2-Class		3 or more Class	
			n	%	n	%	n	%	n	%
JAN-2024	7613	6399	4087	63.9	1293	20.2	751	11.7	268	4.2
FEB-2024	7620	6409	4098	63.9	1285	20.1	755	11.8	271	4.2
MAR-2024	7616	6393	4096	64.1	1277	20.0	749	11.7	271	4.2
APR-2024	7647	6411	4103	64.0	1292	20.2	743	11.6	273	4.3
MAY-2024	7666	6419	4107	64.0	1292	20.1	749	11.7	271	4.2
JUN-2024	7678	6419	4117	64.1	1286	20.0	743	11.6	273	4.3
JUL-2024	7697	6425	4110	64.0	1294	20.1	746	11.6	275	4.3
AUG-2024	7686	6410	4115	64.2	1288	20.1	737	11.5	270	4.2
SEP-2024	7674	6391	4098	64.1	1286	20.1	735	11.5	272	4.3
OCT-2024	7702	6408	4120	64.3	1288	20.1	734	11.5	266	4.2
NOV-2024	7674	6374	4098	64.3	1282	20.1	732	11.5	262	4.1
DEC-2024	7693	6373	4104	64.4	1277	20.0	733	11.5	259	4.1
JAN-2025	7712	6374	4115	64.6	1277	20.0	731	11.5	251	3.9
FEB-2025	7673	6328	4078	64.4	1274	20.1	724	11.4	252	4.0
MAR-2025	7668	6327	4086	64.6	1276	20.2	715	11.3	250	4.0
APR-2025	7702	6345	4104	64.7	1274	20.1	718	11.3	249	3.9
MAY-2025	7677	6323	4082	64.6	1274	20.2	718	11.4	249	3.9
JUN-2025	7693	6322	4091	64.7	1269	20.1	716	11.3	246	3.9
JUL-2025	7750	6360	4121	64.8	1277	20.1	716	11.3	246	3.9
AUG-2025	7740	6344	4103	64.7	1275	20.1	719	11.3	247	3.9
SEP-2025	7719	6308	4082	64.7	1268	20.1	711	11.3	247	3.9
OCT-2025	7752	6334	4104	64.8	1274	20.1	713	11.3	243	3.8
NOV-2025	7775	6351	4117	64.8	1271	20.0	723	11.4	240	3.8
DEC-2025	7807	6363	4136	65.0	1267	19.9	718	11.3	242	3.8

**Number of Antiretroviral (ARV) Drug Classes with Resistance** considers N(t)RTIs, NNRTIs, PIs, and INSTIs only, based on cumulative resistance tests performed in BC (until the specified month) for participants ever tested (see definition below).

Resistance interpretations are performed using the Stanford University HIV Drug Resistance Database Algorithm (HIVdb) version 9.8.

HIVdb scores  $\geq 15$  are classified as "resistant".

**On Antiretroviral Treatment:** based on dispensing data, participants with a record of ARV medication in the specified month and not deceased or moved out of program.

**Ever tested:** those on ARV treatment, with at least one ARV resistance test on record in BC, up until the specified month.





2.1 Active participants by Year of Program Initiation (1987 - 2025) - as of December 2025

DTP Start Year	Duration (years) Median	First Starts	All	Male	Female	Age		(n)	CD4 (cells/ $\mu$ L)		(n)	pVL (copies/mL)	
						Median	(Q1, Q3)		Median	(Q1, Q3)		Median	(Q1, Q3)
Pre-1993	31	48	183	174	9	34	(30, 38)	90	540	(393, 738)	170	<40	(<40, <40)
1993	30	121	122	108	14	34	(29, 39)	73	610	(420, 780)	115	<40	(<40, <40)
1994	29	69	69	57	12	34	(30, 37)	47	670	(420, 915)	61	<40	(<40, <40)
1995	29	122	123	106	17	34	(29, 39)	74	630	(480, 808)	114	<40	(<40, <40)
1996	27	306	308	268	40	35	(30, 39)	178	645	(433, 828)	277	<40	(<40, <40)
1997	24	257	263	238	25	34	(30, 38)	162	600	(395, 825)	225	<40	(<40, <40)
1998	24	185	194	159	35	34	(30, 40)	127	560	(420, 750)	172	<40	(<40, <40)
1999	24	162	163	128	35	36	(31, 42)	110	575	(370, 798)	143	<40	(<40, <40)
2000	24	121	124	98	26	38	(33, 44)	77	700	(470, 840)	105	<40	(<40, <40)
2001	24	121	123	97	26	37	(30, 44)	76	575	(400, 795)	110	<40	(<40, <40)
2002	23	117	127	108	19	40	(30, 46)	80	590	(413, 773)	115	<40	(<40, <40)
2003	22	141	151	128	23	39	(34, 45)	98	610	(433, 780)	134	<40	(<40, <40)
2004	21	140	163	130	33	40	(35, 44)	107	690	(455, 870)	142	<40	(<40, <40)
2005	20	176	194	152	42	40	(35, 47)	135	650	(460, 850)	174	<40	(<40, <40)
2006	19	172	192	155	37	42	(33, 48)	133	590	(460, 860)	170	<40	(<40, <40)
2007	18	232	250	214	36	41	(35, 46)	175	670	(465, 870)	219	<40	(<40, <40)
2008	17	271	304	250	54	42	(34, 49)	216	650	(460, 872)	264	<40	(<40, <40)
2009	16	296	328	268	60	41	(34, 47)	216	690	(469, 920)	297	<40	(<40, <40)
2010	15	258	299	237	62	40	(32, 45)	202	670	(513, 860)	259	<40	(<40, <40)
2011	14	305	350	286	64	41	(33, 48)	215	720	(530, 910)	301	<40	(<40, <40)
2012	13	281	322	260	62	41	(32, 49)	203	720	(525, 955)	283	<40	(<40, <40)
2013	12	249	293	235	58	40	(32, 48)	191	680	(490, 905)	251	<40	(<40, <40)
2014	11	221	287	246	41	40	(31, 50)	183	760	(565, 985)	245	<40	(<40, <40)
2015	10	192	274	234	40	40	(31, 51)	181	690	(500, 940)	240	<40	(<40, <40)
2016	9	183	257	211	46	38	(32, 49)	176	680	(480, 960)	216	<40	(<40, <40)
2017	8	154	223	191	32	36	(29, 45)	153	700	(510, 930)	191	<40	(<40, <40)
2018	7	127	195	154	41	39	(31, 48)	129	830	(563, 1030)	167	<40	(<40, <40)
2019	6	131	245	204	41	38	(29, 48)	182	700	(520, 920)	211	<40	(<40, <40)
2020	5	98	194	148	46	37	(30, 49)	153	740	(550, 970)	164	<40	(<40, <40)

**Duration** defined as cumulative years on antiretroviral treatment, excluding periods of treatment interruption  
**CD4 and pVL tests** defined as most recent test done in the last 12 months and last 6 months, respectively





2.1 Active participants by Year of Program Initiation (1987 - 2025) - as of December 2025 (cont.)

DTP Start Year	Duration (years) Median	First Starts	All	Male	Female	Age		(n)	CD4 (cells/ $\mu$ L)		(n)	pVL (copies/mL)	
						Median	(Q1, Q3)		Median	(Q1, Q3)		Median	(Q1, Q3)
2021	4	111	202	169	33	38	(30, 46)	172	650	(500, 865)	143	<40	(<40, <40)
2022	3	103	264	217	47	38	(31, 47)	226	720	(500, 950)	198	<40	(<40, <40)
2023	3	116	314	256	58	35	(30, 45)	279	650	(470, 840)	245	<40	(<40, <40)
2024	2	136	334	268	66	36	(29, 46)	309	635	(468, 833)	276	<40	(<40, <40)
2025	1	133	373	281	92	36	(30, 46)	354	590	(420, 795)	351	<40	(<40, <40)
<b>Total:</b>		<b>5855</b>	<b>7807</b>	<b>6435</b>	<b>1372</b>								

**Duration** defined as cumulative years on antiretroviral treatment, excluding periods of treatment interruption  
**CD4 and pVL tests** defined as most recent test done in the last 12 months and last 6 months, respectively



**2.2 HIV Viral Load (copies/mL) and CD4 (cells/ $\mu$ L) for Participants on Antiretroviral Treatment**

MON-YYYY	Total Participants	Median # of Treatment days	(n)	CD4 (cells/ $\mu$ L)		(n)	pVL (copies/mL)	
				Median	(Q1, Q3)		Median	(Q1, Q3)
JAN-2024	7642	792	5362	640	(460, 860)	6815	<40	(<40, <40)
FEB-2024	7647	781	5329	650	(460, 870)	6865	<40	(<40, <40)
MAR-2024	7636	790	5326	640	(450, 870)	6872	<40	(<40, <40)
APR-2024	7670	786	5310	640	(450, 870)	6843	<40	(<40, <40)
MAY-2024	7687	787	5318	650	(460, 880)	6897	<40	(<40, <40)
JUN-2024	7687	784	5306	650	(460, 870)	6922	<40	(<40, <40)
JUL-2024	7718	786	5335	650	(460, 870)	7010	<40	(<40, <40)
AUG-2024	7709	782	5312	650	(460, 873)	6938	<40	(<40, <40)
SEP-2024	7697	791	5304	650	(460, 870)	6905	<40	(<40, <40)
OCT-2024	7725	787	5314	650	(460, 870)	6899	<40	(<40, <40)
NOV-2024	7703	793	5308	650	(460, 880)	6876	<40	(<40, <40)
DEC-2024	7720	796	5326	650	(460, 880)	6914	<40	(<40, <40)
JAN-2025	7739	792	5331	650	(450, 880)	6883	<40	(<40, <40)
FEB-2025	7696	800	5304	650	(460, 880)	6871	<40	(<40, <40)
MAR-2025	7689	792	5287	650	(450, 875)	6813	<40	(<40, <40)
APR-2025	7719	779	5299	660	(460, 880)	6891	<40	(<40, <40)
MAY-2025	7705	787	5251	660	(460, 880)	6861	<40	(<40, <40)
JUN-2025	7713	785	5254	660	(460, 880)	6835	<40	(<40, <40)
JUL-2025	7772	773	5304	652	(460, 870)	6914	<40	(<40, <40)
AUG-2025	7762	780	5311	660	(460, 861)	6943	<40	(<40, <40)
SEP-2025	7737	792	5299	660	(460, 860)	6935	<40	(<40, <40)
OCT-2025	7776	784	5324	660	(470, 870)	6963	<40	(<40, <40)
NOV-2025	7790	774	5323	660	(470, 870)	6965	<40	(<40, <40)
DEC-2025	7833	771	5349	660	(470, 880)	6961	<40	(<40, <40)

**Active participant** defined as being on antiretroviral treatment in the specified month

**Treatment days** defined as number of consecutive days on antiretroviral treatment (most recent uninterrupted period)

**CD4 and pVL tests** defined as tests done in the specified month





2.3 BC-CfE HIV Treatment Program Enrolment

MON-YYYY	On ARV Treatment	Off ARV Treatment	Deceased	ARV Treatment naïve starts	ARV Treatment experienced starts	Newly interrupted ARV Treatment	Net Change
JAN-2024	7613	699	16	11	204	159	39
FEB-2024	7620	696	17	11	184	165	7
MAR-2024	7616	710	12	13	183	185	-4
APR-2024	7647	693	17	20	197	168	31
MAY-2024	7666	692	12	16	191	173	19
JUN-2024	7678	707	5	23	173	177	12
JUL-2024	7697	696	15	10	185	159	19
AUG-2024	7686	711	13	15	164	168	-11
SEP-2024	7674	717	9	7	182	186	-12
OCT-2024	7702	710	8	15	200	172	28
NOV-2024	7674	747	14	9	181	199	-28
DEC-2024	7693	744	15	10	194	170	19
JAN-2025	7712	717	14	14	196	170	19
FEB-2025	7673	760	10	9	166	201	-39
MAR-2025	7668	760	12	12	175	177	-5
APR-2025	7702	737	9	12	193	157	34
MAY-2025	7677	758	18	17	167	188	-25
JUN-2025	7693	737	12	8	175	150	16
JUL-2025	7750	697	8	8	203	141	57
AUG-2025	7740	716	11	17	148	163	-10
SEP-2025	7719	768	6	13	189	213	-21
OCT-2025	7752	740	14	10	208	168	33
NOV-2025	7775	748	7	19	186	172	23
DEC-2025	7807	706	18	3	200	150	32

**ARV:** antiretroviral

**On ARV Treatment:** based on dispensing data, participants with a record of ARV medication in the specified month and not deceased or moved out of program

**Off ARV Treatment:** based on dispensing data, participants with no record of ARV medication in the specified month and not deceased or moved out of program

**Deceased:** in the specified month, and on ARV treatment in the previous month

**ARV Treatment naïve starts:** participants starting ARV treatment in the specified month for the first time

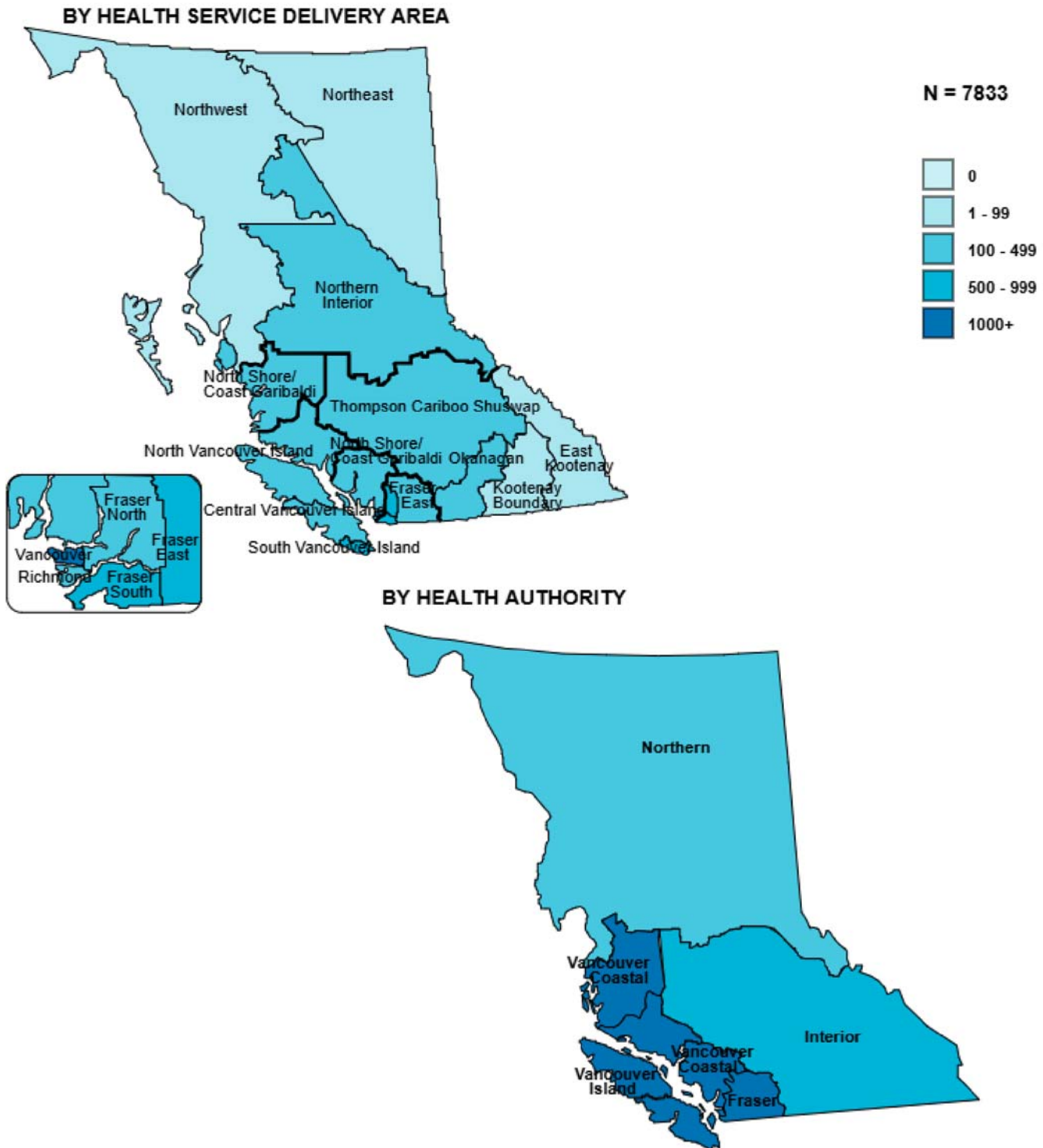
**ARV Treatment experienced starts:** participants with history of ARV treatment, but first dispensing in the BC HIV Treatment Program in the specified month

**Newly Interrupted ARV Treatment:** based on dispensing data, participants with no record of ARV medication in the specified month, but had a record of ARV medication in the previous month, and not deceased or moved out of program, and had contact with the program in the past 5 years.

**Net Change:** the difference between ARV treatment starts (naïve and experienced) and ARV treatment stops (Deceased, moved out of program, or newly interrupted ARV treatment)



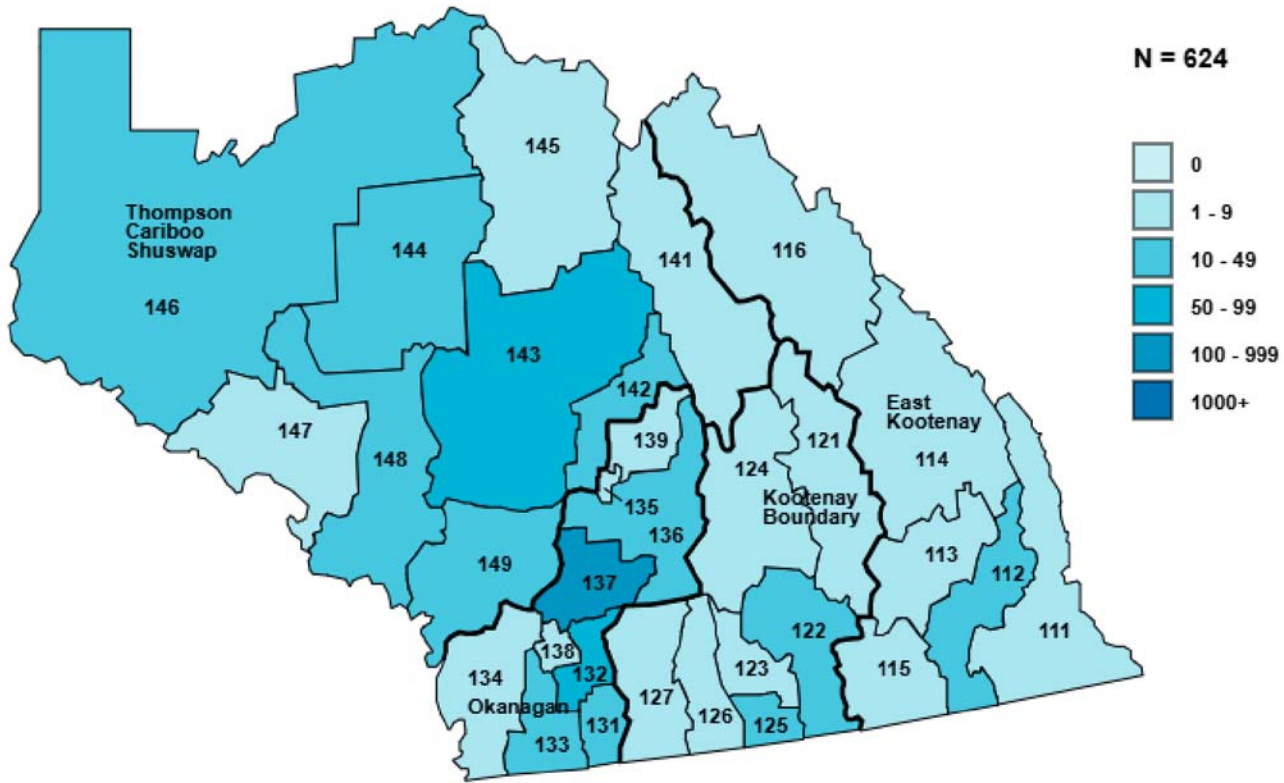
3.1 Distribution of HIV Treatment Program Active Participants  
December 2025



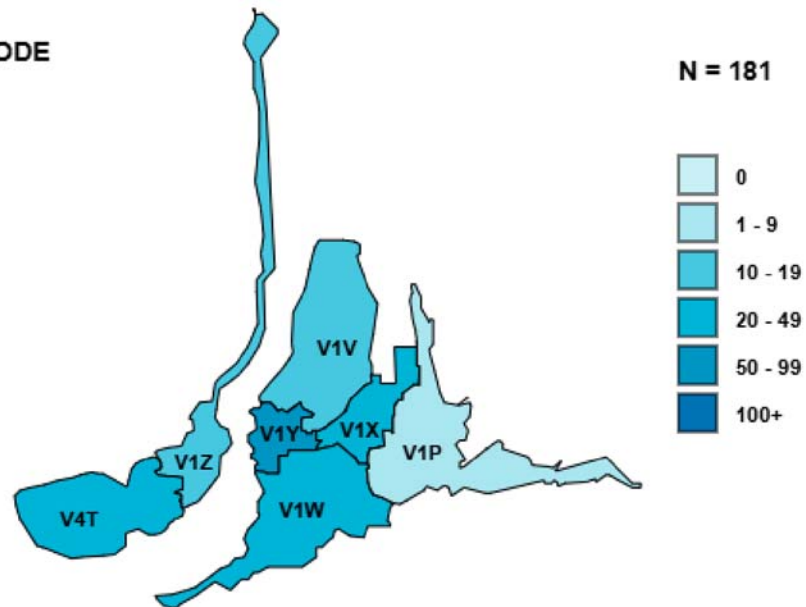


3.2 Distribution of HIV Treatment Program Active Participants December 2025

INTERIOR HEALTH AUTHORITY BY HEALTH SERVICE DELIVERY AREA/LOCAL HEALTH AREA



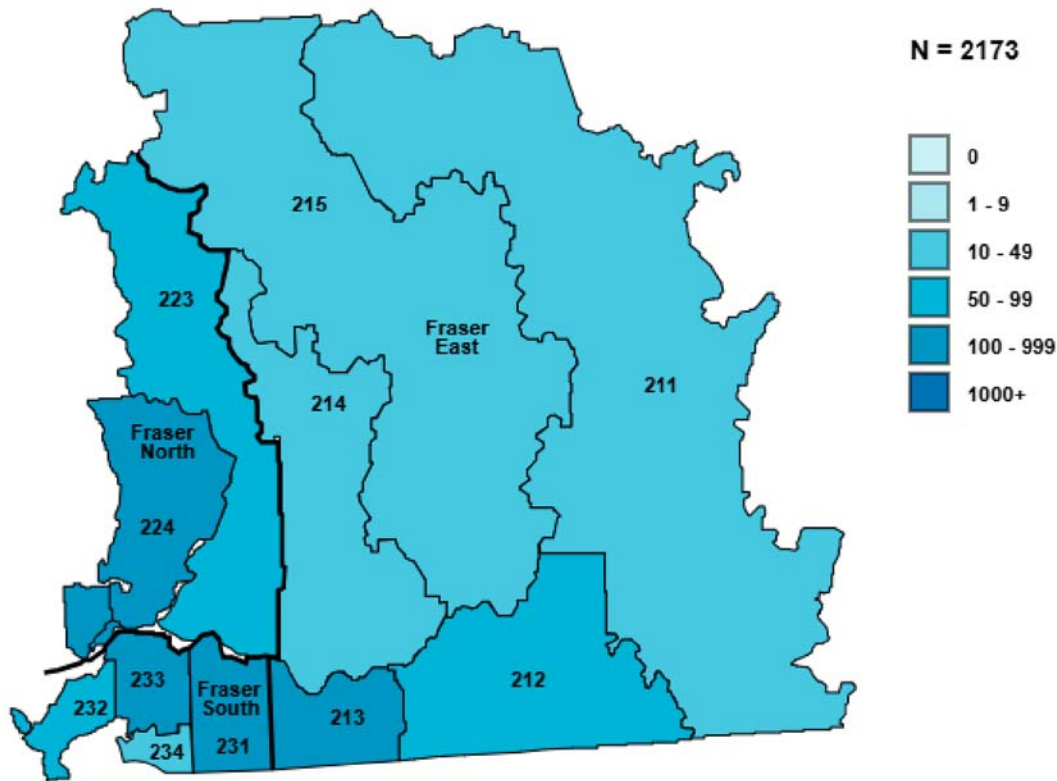
KELOWNA BY POSTAL CODE



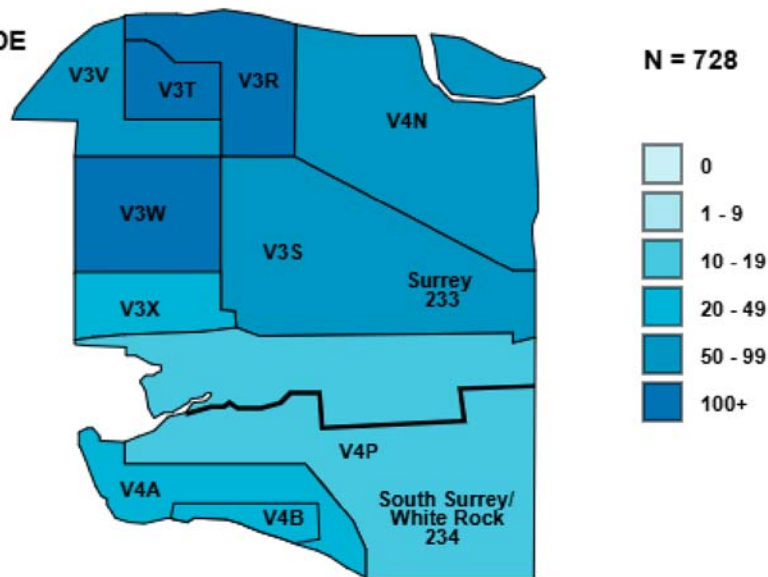


3.3 Distribution of HIV Treatment Program Active Participants December 2025

FRASER HEALTH AUTHORITY BY HEALTH SERVICE DELIVERY AREA/LOCAL HEALTH AREA

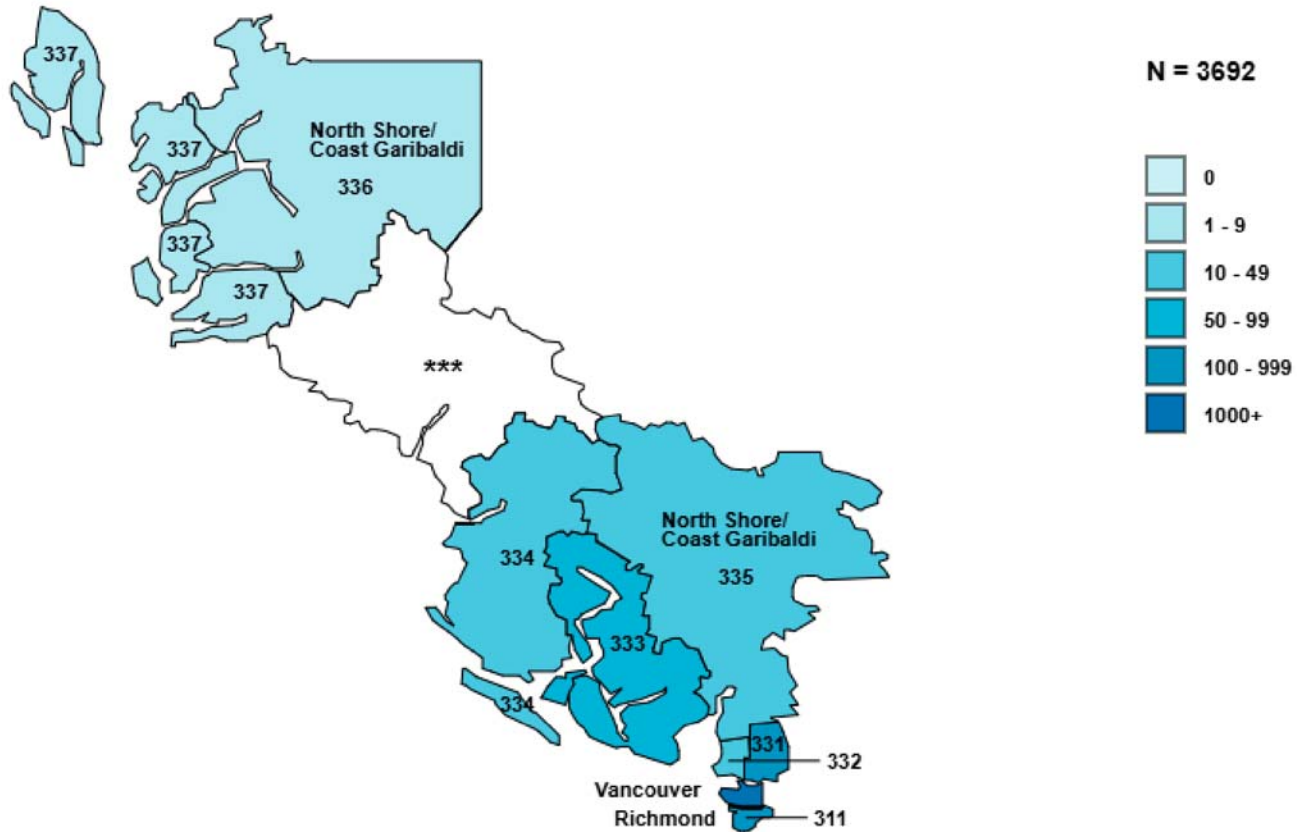


SURREY BY POSTAL CODE

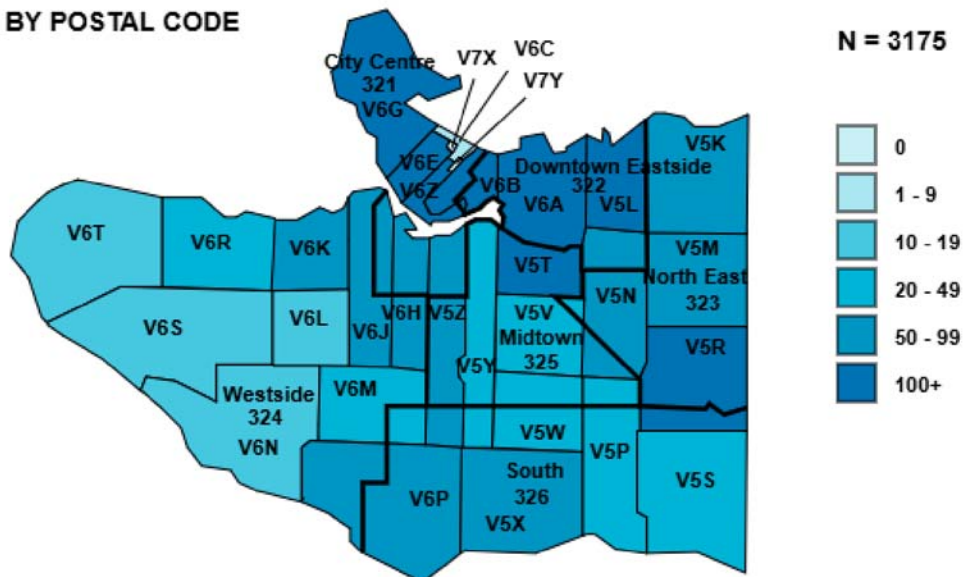


3.4 Distribution of HIV Treatment Program Active Participants  
December 2025

VANCOUVER COASTAL HEALTH AUTHORITY BY HEALTH SERVICE DELIVERY AREA/LOCAL HEALTH AREA



VANCOUVER BY POSTAL CODE



\*\*\* Please refer to VIHA (432 and 434) on the next page

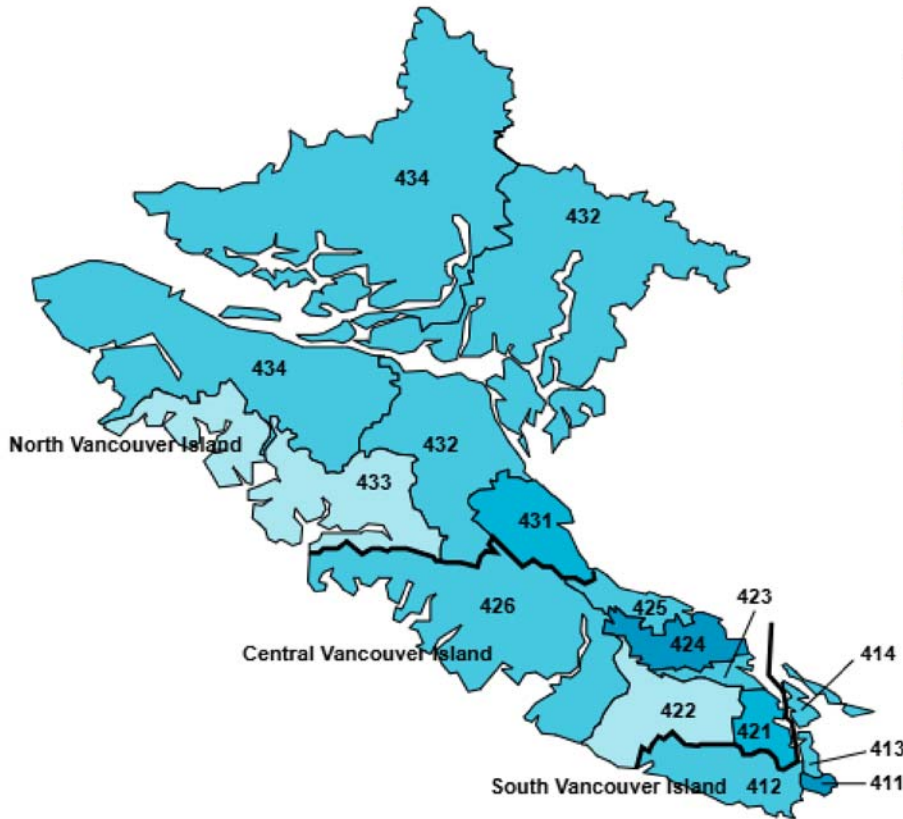
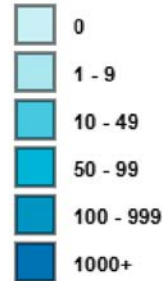




### 3.5 Distribution of HIV Treatment Program Active Participants December 2025

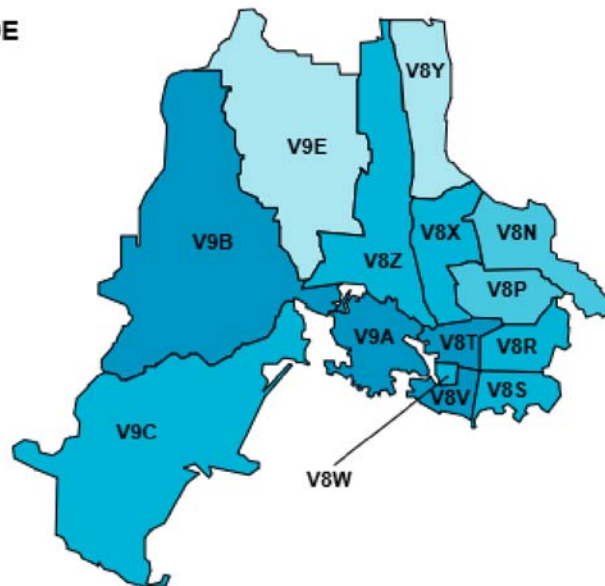
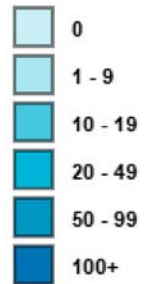
#### VANCOUVER ISLAND HEALTH AUTHORITY BY HEALTH SERVICE DELIVERY AREA/LOCAL HEALTH AREA

N = 1077



#### VICTORIA BY POSTAL CODE

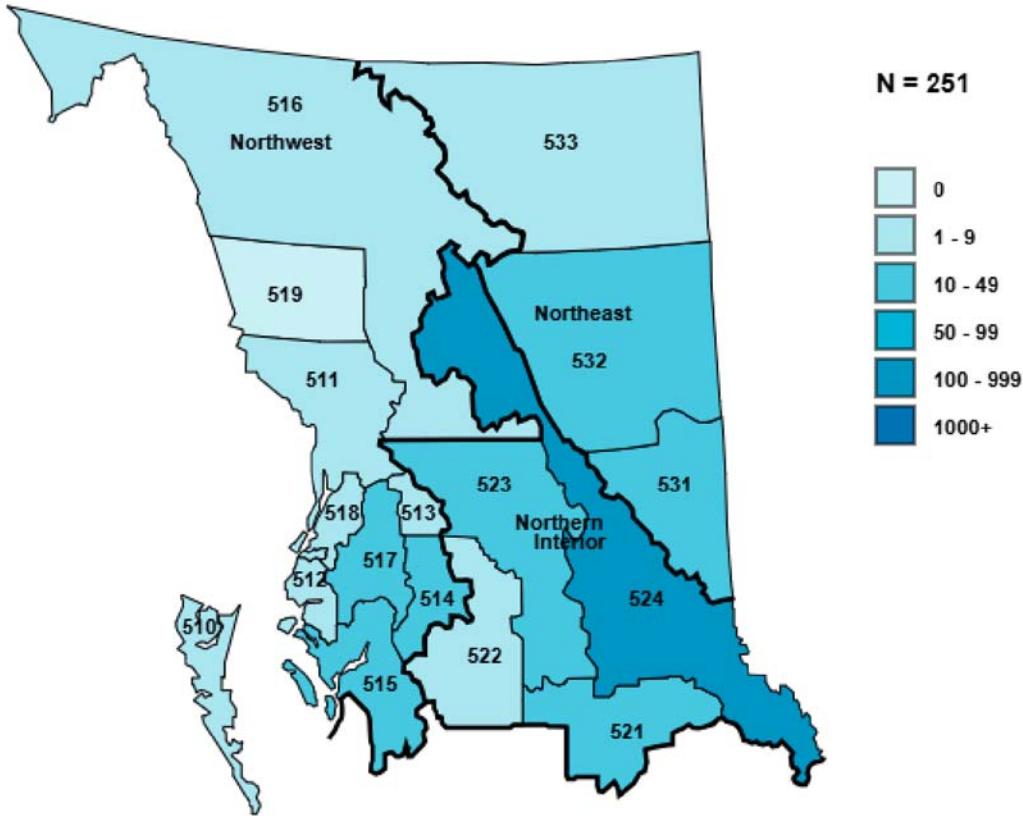
N = 526



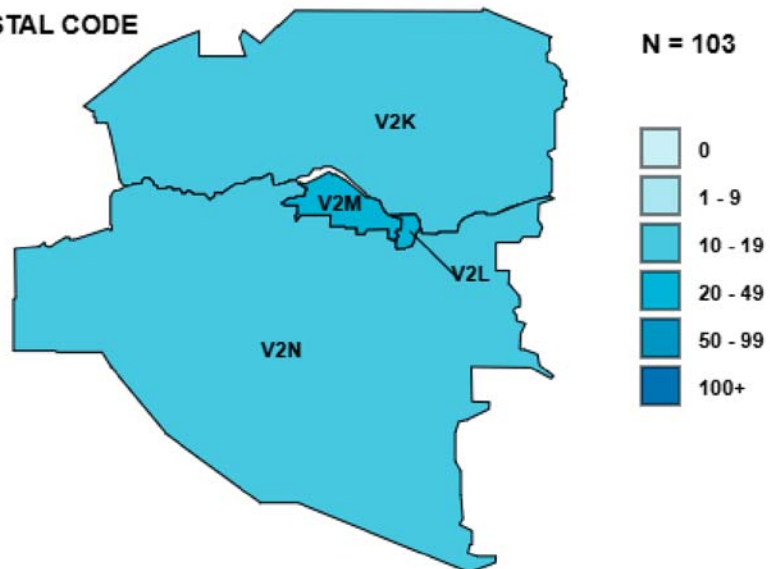


3.6 Distribution of HIV Treatment Program Active Participants December 2025

NORTHERN HEALTH AUTHORITY BY HEALTH SERVICE DELIVERY AREA/LOCAL HEALTH AREA



PRINCE GEORGE BY POSTAL CODE



**4.1 Distribution of Participants by Age & Sex at Birth INTERIOR Health Authority (HA)**

Health Service Delivery Area	Age Group	# Enrolled	# on ART	# First Starts	# CD4 Tested	Median CD4	# pVL Tested	Median pVL
EAST KOOTENAY	0 - 29	0	0	0	0	N/A	0	N/A
	30 - 49	17	15	0	15	750	10	<40
	50 - 64	14	13	0	14	760	10	<40
	65+	7	7	0	6	590	7	<40
	<b>Total HSDA:</b>	<b>38</b>	<b>35</b>	<b>0</b>	<b>35</b>	<b>750</b>	<b>27</b>	<b>&lt;40</b>
KOOTENAY BOUNDARY	0 - 29	*	*	0	*	*	*	*
	30 - 49	*	*	0	*	*	*	*
	50 - 64	*	*	0	*	*	*	*
	65+	*	*	0	*	*	*	*
	<b>Total HSDA:</b>	<b>58</b>	<b>51</b>	<b>0</b>	<b>51</b>	<b>770</b>	<b>52</b>	<b>&lt;40</b>
OKANAGAN	0 - 29	12	12	0	13	710	10	<40
	30 - 49	126	112	0	117	750	98	<40
	50 - 64	157	147	0	141	670	130	<40
	65+	90	87	0	82	565	74	<40
	<b>Total HSDA:</b>	<b>385</b>	<b>358</b>	<b>0</b>	<b>353</b>	<b>660</b>	<b>312</b>	<b>&lt;40</b>
THOMPSON/CARIBOO/SHUSWAP	0 - 29	14	10	0	12	825	11	<40
	30 - 49	64	58	0	53	770	44	<40
	50 - 64	85	75	0	65	660	66	<40
	65+	38	37	0	32	690	33	<40
	<b>Total HSDA:</b>	<b>201</b>	<b>180</b>	<b>0</b>	<b>162</b>	<b>740</b>	<b>154</b>	<b>&lt;40</b>
<b>Total HA:</b>		<b>682</b>	<b>624</b>	<b>0</b>	<b>601</b>	<b>690</b>	<b>545</b>	<b>&lt;40</b>

	Age Group	# Enrolled	# on ART	# First Starts	# CD4 Tested	Median CD4	# pVL Tested	Median pVL
	0 - 29	30	26	0	29	820	24	<40
	30 - 49	222	198	0	200	750	166	<40
	50 - 64	275	252	0	236	680	222	<40
	65+	155	148	0	136	585	133	<40
<b>Total HA:</b>		<b>682</b>	<b>624</b>	<b>0</b>	<b>601</b>	<b>690</b>	<b>545</b>	<b>&lt;40</b>

Sex at Birth	# Enrolled	# on ART	# First Starts	# CD4 Tested	Median CD4	# pVL Tested	Median pVL
Male	541	497	0	475	660	440	<40
Female	141	127	0	126	780	105	<40
Unknown	0	0	0	0	N/A	0	N/A

Currently on antiretroviral treatment	# of Participants	Median Age	Median CD4	Median pVL
<b>Total HA:</b>	<b>624</b>	<b>56</b>	<b>700</b>	<b>&lt;40</b>

\* Participant values and corresponding data > 0 and < 5 are suppressed for privacy purposes.

# **Enrolled**: Participants who had enrolled in the HIV Treatment Program, but not known to be deceased or formally reported as moved out of program  
 # **on ART**: # of participants on antiretroviral treatment (ART) in the specified month based on dispensing record  
 # **CD4** or **pVL** tested: participants tested for CD4 or pVL within the past 12 months and 6 months, respectively (CD4 in cells/μL and pVL in copies/mL)



**4.2 Distribution of Participants by Program Duration INTERIOR Health Authority**

HSDA	Program Duration	# Enrolled	# on ART	# First Starts	# CD4 Tested	Median CD4	# pVL Tested	Median pVL
EAST KOOTENAY	10 years or more	16	14	0	14	730	11	<40
	5 years or more	11	11	0	9	880	8	<40
	<5 years	11	10	0	12	710	8	<40
	Never on ART	0	0	0	0	N/A	0	N/A
	<b>Total HSDA:</b>	<b>38</b>	<b>35</b>	<b>0</b>	<b>35</b>	<b>750</b>	<b>27</b>	<b>&lt;40</b>
KOOTENAY BOUNDARY	10 years or more	44	38	0	37	720	37	<40
	5 years or more	8	7	0	7	780	8	<40
	<5 years	6	6	0	7	870	7	<40
	Never on ART	0	0	0	0	N/A	0	N/A
	<b>Total HSDA:</b>	<b>58</b>	<b>51</b>	<b>0</b>	<b>51</b>	<b>770</b>	<b>52</b>	<b>&lt;40</b>
OKANAGAN	10 years or more	250	236	0	225	650	208	<40
	5 years or more	54	46	0	50	725	39	<40
	<5 years	81	76	0	78	620	65	<40
	Never on ART	0	0	0	0	N/A	0	N/A
	<b>Total HSDA:</b>	<b>385</b>	<b>358</b>	<b>0</b>	<b>353</b>	<b>660</b>	<b>312</b>	<b>&lt;40</b>
THOMPSON/CARIBOO/SHUSWAP	10 years or more	123	109	0	*	*	*	*
	5 years or more	27	23	0	*	*	*	*
	<5 years	51	48	0	*	*	*	*
	Never on ART	0	0	0	*	*	*	*
	<b>Total HSDA:</b>	<b>201</b>	<b>180</b>	<b>0</b>	<b>162</b>	<b>740</b>	<b>154</b>	<b>&lt;40</b>
<b>Total HA:</b>		<b>682</b>	<b>624</b>	<b>0</b>	<b>601</b>	<b>690</b>	<b>545</b>	<b>&lt;40</b>

	Program Duration	# Enrolled	# on ART	# First Starts	# CD4 Tested	Median CD4	# pVL Tested	Median pVL
	10 years or more	433	397	0	*	*	*	*
	5 years or more	100	87	0	*	*	*	*
	<5 years	149	140	0	*	*	*	*
	Never on ART	0	0	0	*	*	*	*
<b>Total HA:</b>		<b>682</b>	<b>624</b>	<b>0</b>	<b>601</b>	<b>690</b>	<b>545</b>	<b>&lt;40</b>

\* Participant values and corresponding data > 0 and < 5 are suppressed for privacy purposes.

# **Enrolled:** Participants who had enrolled in HIV Treatment Program, not known to be deceased or formally reported as moved out of program

# **on ART:** Participants on antiretroviral treatment (ART) in the specified month based on dispensing record (as above footnote)

**Program Duration:** years since first antiretroviral treatment dispensing in BC HIV Treatment Program

# **CD4 or pVL tested:** participants tested for CD4 or pVL within the past 12 months and 6 months, respectively





4.3 Distribution of Antiretroviral Treatment Prescribers INTERIOR Health Authority

HSDA of Prescriber Residency	# of Prescribers currently prescribing Antiretroviral Treatment	# of Participants currently treated by Prescribers	# of Prescribers ever prescribed Antiretroviral Treatment	# of Participants ever treated by Prescribers
EAST KOOTENAY	12	31	53	106
KOOTENAY BOUNDARY	16	34	78	141
OKANAGAN	52	328	247	1122
THOMPSON/CARIBOO/SHUSWAP	29	149	155	607
<b>Total:</b>	<b>109</b>	<b>542</b>	<b>533</b>	<b>1976</b>

HSDA of Participant Residency	# of Participants with Prescriber out of HA/HSDA
EAST KOOTENAY	*
KOOTENAY BOUNDARY	*
OKANAGAN	*
THOMPSON/CARIBOO/SHUSWAP	*
<b>Total:</b>	<b>137</b>

\* Participant values and corresponding data > 0 and < 5 are suppressed for privacy purposes.

**Currently prescribing Antiretroviral Treatment:** number of prescribers of antiretroviral treatment dispensed in the previous 6 months (based on participant HA/HSDA)

**Currently treated:** number of participants with antiretroviral treatment dispensed in the previous 6 months by antiretroviral treatment prescribers (based on follow-up prescriber HA/HSDA)

**Prescribers ever prescribed Antiretroviral Treatment:** for participants residing in HA/HSDA

**Participants ever treated by prescribers:** where follow-up prescriber is in the HA/HSDA

**Participants with Prescriber out of HA/HSDA:** participants residing in specified HA/HSDA with follow-up prescriber(s) in another HA/HSDA



**4.4 Distribution of Participants by Age & Sex at Birth FRASER Health Authority (HA)**

Health Service Delivery Area	Age Group	# Enrolled	# on ART	# First Starts	# CD4 Tested	Median CD4	# pVL Tested	Median pVL
FRASER EAST	0 - 29	33	28	0	31	730	29	<40
	30 - 49	116	94	0	86	700	88	<40
	50 - 64	156	142	0	101	620	126	<40
	65+	75	73	0	51	610	69	<40
	<b>Total HSDA:</b>	<b>380</b>	<b>337</b>	<b>0</b>	<b>269</b>	<b>660</b>	<b>312</b>	<b>&lt;40</b>
FRASER NORTH	0 - 29	39	33	*	37	656	35	<40
	30 - 49	384	347	*	298	720	317	<40
	50 - 64	358	335	*	235	670	308	<40
	65+	179	172	*	110	650	158	<40
	<b>Total HSDA:</b>	<b>960</b>	<b>887</b>	<b>&lt;5</b>	<b>680</b>	<b>681</b>	<b>818</b>	<b>&lt;40</b>
FRASER SOUTH	0 - 29	75	71	*	61	696	71	<40
	30 - 49	356	334	*	251	695	313	<40
	50 - 64	404	375	*	260	651	342	<40
	65+	173	169	*	124	595	163	<40
	<b>Total HSDA:</b>	<b>1008</b>	<b>949</b>	<b>&lt;5</b>	<b>696</b>	<b>650.5</b>	<b>889</b>	<b>&lt;40</b>
<b>Total HA:</b>		<b>2348</b>	<b>2173</b>	<b>&lt;5</b>	<b>1645</b>	<b>670</b>	<b>2019</b>	<b>&lt;40</b>

	Age Group	# Enrolled	# on ART	# First Starts	# CD4 Tested	Median CD4	# pVL Tested	Median pVL
	0 - 29	147	132	*	129	680	135	<40
	30 - 49	856	775	*	635	700	718	<40
	50 - 64	918	852	*	596	651	776	<40
	65+	427	414	*	285	620	390	<40
<b>Total HA:</b>		<b>2348</b>	<b>2173</b>	<b>&lt;5</b>	<b>1645</b>	<b>670</b>	<b>2019</b>	<b>&lt;40</b>

Sex at Birth	# Enrolled	# on ART	# First Starts	# CD4 Tested	Median CD4	# pVL Tested	Median pVL
Male	1775	1647	*	1203	660	1544	<40
Female	573	526	*	442	700	475	<40
Unknown	0	0	*	0	N/A	0	N/A

Currently on antiretroviral treatment	# of Participants	Median Age	Median CD4	Median pVL
<b>Total HA:</b>	<b>2173</b>	<b>53</b>	<b>680</b>	<b>&lt;40</b>

\* Participant values and corresponding data > 0 and < 5 are suppressed for privacy purposes.

# **Enrolled**: Participants who had enrolled in the HIV Treatment Program, but not known to be deceased or formally reported as moved out of program  
 # **on ART**: # of participants on antiretroviral treatment (ART) in the specified month based on dispensing record  
 # **CD4** or **pVL** tested: participants tested for CD4 or pVL within the past 12 months and 6 months, respectively (CD4 in cells/ $\mu$ L and pVL in copies/mL)



**4.5 Distribution of Participants by Program Duration FRASER Health Authority**

HSDA	Program Duration	# Enrolled	# on ART	# First Starts	# CD4 Tested	Median CD4	# pVL Tested	Median pVL
FRASER EAST	10 years or more	236	211	0	156	650	195	<40
	5 years or more	54	43	0	37	687	34	<40
	<5 years	90	83	0	76	615	83	<40
	Never on ART	0	0	0	0	N/A	0	N/A
	<b>Total HSDA:</b>	<b>380</b>	<b>337</b>	<b>0</b>	<b>269</b>	<b>660</b>	<b>312</b>	<b>&lt;40</b>
FRASER NORTH	10 years or more	601	565	*	381	700	*	*
	5 years or more	147	132	*	119	740	*	*
	<5 years	212	190	*	180	645	*	*
	Never on ART	0	0	*	0	N/A	*	*
	<b>Total HSDA:</b>	<b>960</b>	<b>887</b>	<b>&lt;5</b>	<b>680</b>	<b>681</b>	<b>818</b>	<b>&lt;40</b>
FRASER SOUTH	10 years or more	583	548	*	*	*	*	*
	5 years or more	157	140	*	*	*	*	*
	<5 years	268	261	*	*	*	*	*
	Never on ART	0	0	*	*	*	*	*
	<b>Total HSDA:</b>	<b>1008</b>	<b>949</b>	<b>&lt;5</b>	<b>696</b>	<b>650.5</b>	<b>889</b>	<b>&lt;40</b>
<b>Total HA:</b>		<b>2348</b>	<b>2173</b>	<b>&lt;5</b>	<b>1645</b>	<b>670</b>	<b>2019</b>	<b>&lt;40</b>

	Program Duration	# Enrolled	# on ART	# First Starts	# CD4 Tested	Median CD4	# pVL Tested	Median pVL
	10 years or more	1420	1324	*	*	*	1211	<40
	5 years or more	358	315	*	*	*	281	<40
	<5 years	570	534	*	*	*	522	<40
	Never on ART	0	0	*	*	*	5	233
<b>Total HA:</b>		<b>2348</b>	<b>2173</b>	<b>&lt;5</b>	<b>1645</b>	<b>670</b>	<b>2019</b>	<b>&lt;40</b>

\* Participant values and corresponding data > 0 and < 5 are suppressed for privacy purposes.

# **Enrolled:** Participants who had enrolled in HIV Treatment Program, not known to be deceased or formally reported as moved out of program

# **on ART:** Participants on antiretroviral treatment (ART) in the specified month based on dispensing record (as above footnote)

**Program Duration:** years since first antiretroviral treatment dispensing in BC HIV Treatment Program

# **CD4 or pVL tested:** participants tested for CD4 or pVL within the past 12 months and 6 months, respectively





4.6 Distribution of Antiretroviral Treatment Prescribers FRASER Health Authority

HSDA of Prescriber Residency	# of Prescribers currently prescribing Antiretroviral Treatment	# of Participants currently treated by Prescribers	# of Prescribers ever prescribed Antiretroviral Treatment	# of Participants ever treated by Prescribers
FRASER EAST	33	79	159	569
FRASER NORTH	33	249	273	1672
FRASER SOUTH	44	603	245	2051
<b>Total:</b>	<b>110</b>	<b>931</b>	<b>677</b>	<b>4292</b>

HSDA of Participant Residency	# of Participants with Prescriber out of HA/HSDA
FRASER EAST	212
FRASER NORTH	721
FRASER SOUTH	474
<b>Total:</b>	<b>1407</b>

\* Participant values and corresponding data > 0 and < 5 are suppressed for privacy purposes.

**Currently prescribing Antiretroviral Treatment:** number of prescribers of antiretroviral treatment dispensed in the previous 6 months (based on participant HA/HSDA)

**Currently treated:** number of participants with antiretroviral treatment dispensed in the previous 6 months by antiretroviral treatment prescribers (based on follow-up prescriber HA/HSDA)

**Prescribers ever prescribed Antiretroviral Treatment:** for participants residing in HA/HSDA

**Participants ever treated by prescribers:** where follow-up prescriber is in the HA/HSDA

**Participants with Prescriber out of HA/HSDA:** participants residing in specified HA/HSDA with follow-up prescriber(s) in another HA/HSDA





4.7 Distribution of Participants by Age & Sex at Birth VANCOUVER COASTAL Health Authority (HA)

Health Service Delivery Area	Age Group	# Enrolled	# on ART	# First Starts	# CD4 Tested	Median CD4	# pVL Tested	Median pVL
NORTH SHORE/COAST GARIBALDI	0 - 29	10	9	0	9	940	9	<40
	30 - 49	79	69	0	63	740	66	<40
	50 - 64	128	118	0	84	725	102	<40
	65+	102	99	0	83	620	92	<40
	<b>Total HSDA:</b>	<b>319</b>	<b>295</b>	<b>0</b>	<b>239</b>	<b>700</b>	<b>269</b>	<b>&lt;40</b>
RICHMOND	0 - 29	9	6	0	8	760	8	<40
	30 - 49	67	59	0	57	580	55	<40
	50 - 64	78	72	0	62	700	71	<40
	65+	28	28	0	26	615	26	<40
	<b>Total HSDA:</b>	<b>182</b>	<b>165</b>	<b>0</b>	<b>153</b>	<b>630</b>	<b>160</b>	<b>&lt;40</b>
VANCOUVER	0 - 29	102	95	0	90	665	93	<40
	30 - 49	1163	1030	0	847	710	972	<40
	50 - 64	1456	1355	0	1014	610	1292	<40
	65+	784	752	0	503	610	732	<40
	<b>Total HSDA:</b>	<b>3505</b>	<b>3232</b>	<b>0</b>	<b>2454</b>	<b>650</b>	<b>3089</b>	<b>&lt;40</b>
<b>Total HA:</b>		<b>4006</b>	<b>3692</b>	<b>0</b>	<b>2846</b>	<b>650</b>	<b>3518</b>	<b>&lt;40</b>

	Age Group	# Enrolled	# on ART	# First Starts	# CD4 Tested	Median CD4	# pVL Tested	Median pVL
	0 - 29	121	110	0	107	680	110	<40
	30 - 49	1309	1158	0	967	700	1093	<40
	50 - 64	1662	1545	0	1160	630	1465	<40
	65+	914	879	0	612	610	850	<40
<b>Total HA:</b>		<b>4006</b>	<b>3692</b>	<b>0</b>	<b>2846</b>	<b>650</b>	<b>3518</b>	<b>&lt;40</b>

Sex at Birth	# Enrolled	# on ART	# First Starts	# CD4 Tested	Median CD4	# pVL Tested	Median pVL
Male	3506	3241	0	2385	650	3104	<40
Female	500	451	0	461	670	414	<40
Unknown	0	0	0	0	N/A	0	N/A

Currently on antiretroviral treatment	# of Participants	Median Age	Median CD4	Median pVL
<b>Total HA:</b>	<b>3692</b>	<b>57</b>	<b>660</b>	<b>&lt;40</b>

\* Participant values and corresponding data > 0 and < 5 are suppressed for privacy purposes.

# **Enrolled**: Participants who had enrolled in the HIV Treatment Program, but not known to be deceased or formally reported as moved out of program  
 # **on ART**: # of participants on antiretroviral treatment (ART) in the specified month based on dispensing record  
 # **CD4** or **pVL** tested: participants tested for CD4 or pVL within the past 12 months and 6 months, respectively (CD4 in cells/μL and pVL in copies/mL)



**4.8 Distribution of Participants by Program Duration VANCOUVER COASTAL Health Authority**

HSDA	Program Duration	# Enrolled	# on ART	# First Starts	# CD4 Tested	Median CD4	# pVL Tested	Median pVL
NORTH SHORE/COAST GARIBALDI	10 years or more	232	212	0	*	*	194	<40
	5 years or more	40	39	0	*	*	34	<40
	<5 years	47	44	0	*	*	41	<40
	Never on ART	0	0	0	*	*	0	N/A
	<b>Total HSDA:</b>	<b>319</b>	<b>295</b>	<b>0</b>	<b>239</b>	<b>700</b>	<b>269</b>	<b>&lt;40</b>
RICHMOND	10 years or more	100	91	0	79	640	89	<40
	5 years or more	35	28	0	29	610	27	<40
	<5 years	47	46	0	45	600	44	<40
	Never on ART	0	0	0	0	N/A	0	N/A
	<b>Total HSDA:</b>	<b>182</b>	<b>165</b>	<b>0</b>	<b>153</b>	<b>630</b>	<b>160</b>	<b>&lt;40</b>
VANCOUVER	10 years or more	2478	2322	0	1655	630	2211	<40
	5 years or more	517	437	0	356	730	412	<40
	<5 years	510	473	0	437	670	459	<40
	Never on ART	0	0	0	6	500	7	<40
	<b>Total HSDA:</b>	<b>3505</b>	<b>3232</b>	<b>0</b>	<b>2454</b>	<b>650</b>	<b>3089</b>	<b>&lt;40</b>
<b>Total HA:</b>		<b>4006</b>	<b>3692</b>	<b>0</b>	<b>2846</b>	<b>650</b>	<b>3518</b>	<b>&lt;40</b>

	Program Duration	# Enrolled	# on ART	# First Starts	# CD4 Tested	Median CD4	# pVL Tested	Median pVL
	10 years or more	2810	2625	0	1900	640	2494	<40
	5 years or more	592	504	0	415	730	473	<40
	<5 years	604	563	0	524	660	544	<40
	Never on ART	0	0	0	7	630	7	<40
<b>Total HA:</b>		<b>4006</b>	<b>3692</b>	<b>0</b>	<b>2846</b>	<b>650</b>	<b>3518</b>	<b>&lt;40</b>

\* Participant values and corresponding data > 0 and < 5 are suppressed for privacy purposes.

# **Enrolled:** Participants who had enrolled in HIV Treatment Program, not known to be deceased or formally reported as moved out of program

# **on ART:** Participants on antiretroviral treatment (ART) in the specified month based on dispensing record (as above footnote)

**Program Duration:** years since first antiretroviral treatment dispensing in BC HIV Treatment Program

# **CD4 or pVL tested:** participants tested for CD4 or pVL within the past 12 months and 6 months, respectively





4.9 Distribution of Antiretroviral Treatment Prescribers VANCOUVER COASTAL Health Authority

HSDA of Prescriber Residency	# of Prescribers currently prescribing Antiretroviral Treatment	# of Participants currently treated by Prescribers	# of Prescribers ever prescribed Antiretroviral Treatment	# of Participants ever treated by Prescribers
NORTH SHORE/COAST GARIBALDI	41	63	206	586
RICHMOND	9	114	50	351
VANCOUVER	208	5414	712	12358
<b>Total:</b>	<b>258</b>	<b>5591</b>	<b>968</b>	<b>13295</b>

HSDA of Participant Residency	# of Participants with Prescriber out of HA/HSDA
NORTH SHORE/COAST GARIBALDI	*
RICHMOND	*
VANCOUVER	*
<b>Total:</b>	<b>47</b>

\* Participant values and corresponding data > 0 and < 5 are suppressed for privacy purposes.

**Currently prescribing Antiretroviral Treatment:** number of prescribers of antiretroviral treatment dispensed in the previous 6 months (based on participant HA/HSDA)

**Currently treated:** number of participants with antiretroviral treatment dispensed in the previous 6 months by antiretroviral treatment prescribers (based on follow-up prescriber HA/HSDA)

**Prescribers ever prescribed Antiretroviral Treatment:** for participants residing in HA/HSDA

**Participants ever treated by prescribers:** where follow-up prescriber is in the HA/HSDA

**Participants with Prescriber out of HA/HSDA:** participants residing in specified HA/HSDA with follow-up prescriber(s) in another HA/HSDA



**4.10 Distribution of Participants by Age & Sex at Birth VANCOUVER ISLAND Health Authority (HA)**

Health Service Delivery Area	Age Group	# Enrolled	# on ART	# First Starts	# CD4 Tested	Median CD4	# pVL Tested	Median pVL
CENTRAL VANCOUVER ISLAND	0 - 29	6	*	*	6	825	6	<40
	30 - 49	89	*	*	56	630	65	<40
	50 - 64	145	*	*	67	700	110	<40
	65+	92	*	*	35	480	82	<40
	<b>Total HSDA:</b>	<b>332</b>	<b>314</b>	<b>&lt;5</b>	<b>164</b>	<b>610</b>	<b>263</b>	<b>&lt;40</b>
NORTH VANCOUVER ISLAND	0 - 29	*	*	0	*	*	*	*
	30 - 49	*	*	0	*	*	*	*
	50 - 64	*	*	0	*	*	*	*
	65+	*	*	0	*	*	*	*
	<b>Total HSDA:</b>	<b>116</b>	<b>106</b>	<b>0</b>	<b>57</b>	<b>620</b>	<b>91</b>	<b>&lt;40</b>
SOUTH VANCOUVER ISLAND	0 - 29	32	30	0	18	535	26	<40
	30 - 49	209	177	0	74	600	151	<40
	50 - 64	301	282	0	73	600	234	<40
	65+	172	168	0	33	640	150	<40
	<b>Total HSDA:</b>	<b>714</b>	<b>657</b>	<b>0</b>	<b>198</b>	<b>600</b>	<b>561</b>	<b>&lt;40</b>
<b>Total HA:</b>		<b>1162</b>	<b>1077</b>	<b>&lt;5</b>	<b>419</b>	<b>610</b>	<b>915</b>	<b>&lt;40</b>

	Age Group	# Enrolled	# on ART	# First Starts	# CD4 Tested	Median CD4	# pVL Tested	Median pVL
	0 - 29	42	37	*	27	610	35	<40
	30 - 49	327	286	*	147	610	238	<40
	50 - 64	494	462	*	159	620	378	<40
	65+	299	292	*	86	580	264	<40
<b>Total HA:</b>		<b>1162</b>	<b>1077</b>	<b>&lt;5</b>	<b>419</b>	<b>610</b>	<b>915</b>	<b>&lt;40</b>

Sex at Birth	# Enrolled	# on ART	# First Starts	# CD4 Tested	Median CD4	# pVL Tested	Median pVL
Male	964	895	*	322	600	760	<40
Female	198	182	*	97	650	155	<40
Unknown	0	0	*	0	N/A	0	N/A

Currently on antiretroviral treatment	# of Participants	Median Age	Median CD4	Median pVL
<b>Total HA:</b>	<b>1077</b>	<b>58</b>	<b>610</b>	<b>&lt;40</b>

\* Participant values and corresponding data > 0 and < 5 are suppressed for privacy purposes.

# **Enrolled**: Participants who had enrolled in the HIV Treatment Program, but not known to be deceased or formally reported as moved out of program  
 # **on ART**: # of participants on antiretroviral treatment (ART) in the specified month based on dispensing record  
 # **CD4** or **pVL** tested: participants tested for CD4 or pVL within the past 12 months and 6 months, respectively (CD4 in cells/μL and pVL in copies/mL)



**4.11 Distribution of Participants by Program Duration VANCOUVER ISLAND Health Authority**

HSDA	Program Duration	# Enrolled	# on ART	# First Starts	# CD4 Tested	Median CD4	# pVL Tested	Median pVL
CENTRAL VANCOUVER ISLAND	10 years or more	230	218	*	*	*	*	*
	5 years or more	55	53	*	*	*	*	*
	<5 years	47	43	*	*	*	*	*
	Never on ART	0	0	*	*	*	*	*
	<b>Total HSDA:</b>	<b>332</b>	<b>314</b>	<b>&lt;5</b>	<b>164</b>	<b>610</b>	<b>263</b>	<b>&lt;40</b>
NORTH VANCOUVER ISLAND	10 years or more	90	82	0	40	590	68	<40
	5 years or more	10	10	0	6	795	9	<40
	<5 years	16	14	0	11	720	14	<40
	Never on ART	0	0	0	0	N/A	0	N/A
	<b>Total HSDA:</b>	<b>116</b>	<b>106</b>	<b>0</b>	<b>57</b>	<b>620</b>	<b>91</b>	<b>&lt;40</b>
SOUTH VANCOUVER ISLAND	10 years or more	433	411	0	*	*	*	*
	5 years or more	131	109	0	*	*	*	*
	<5 years	150	137	0	*	*	*	*
	Never on ART	0	0	0	*	*	*	*
	<b>Total HSDA:</b>	<b>714</b>	<b>657</b>	<b>0</b>	<b>198</b>	<b>600</b>	<b>561</b>	<b>&lt;40</b>
<b>Total HA:</b>		<b>1162</b>	<b>1077</b>	<b>&lt;5</b>	<b>419</b>	<b>610</b>	<b>915</b>	<b>&lt;40</b>

	Program Duration	# Enrolled	# on ART	# First Starts	# CD4 Tested	Median CD4	# pVL Tested	Median pVL
	10 years or more	753	711	*	*	*	*	*
	5 years or more	196	172	*	*	*	*	*
	<5 years	213	194	*	*	*	*	*
	Never on ART	0	0	*	*	*	*	*
<b>Total HA:</b>		<b>1162</b>	<b>1077</b>	<b>&lt;5</b>	<b>419</b>	<b>610</b>	<b>915</b>	<b>&lt;40</b>

\* Participant values and corresponding data > 0 and < 5 are suppressed for privacy purposes.

# **Enrolled:** Participants who had enrolled in HIV Treatment Program, not known to be deceased or formally reported as moved out of program

# **on ART:** Participants on antiretroviral treatment (ART) in the specified month based on dispensing record (as above footnote)

**Program Duration:** years since first antiretroviral treatment dispensing in BC HIV Treatment Program

# **CD4 or pVL tested:** participants tested for CD4 or pVL within the past 12 months and 6 months, respectively





4.12 Distribution of Antiretroviral Treatment Prescribers VANCOUVER ISLAND Health Authority

HSDA of Prescriber Residency	# of Prescribers currently prescribing Antiretroviral Treatment	# of Participants currently treated by Prescribers	# of Prescribers ever prescribed Antiretroviral Treatment	# of Participants ever treated by Prescribers
CENTRAL VANCOUVER ISLAND	67	206	218	991
NORTH VANCOUVER ISLAND	34	67	155	370
SOUTH VANCOUVER ISLAND	52	618	246	2106
<b>Total:</b>	<b>153</b>	<b>891</b>	<b>619</b>	<b>3467</b>

HSDA of Participant Residency	# of Participants with Prescriber out of HA/HSDA
CENTRAL VANCOUVER ISLAND	94
NORTH VANCOUVER ISLAND	45
SOUTH VANCOUVER ISLAND	118
<b>Total:</b>	<b>257</b>

\* Participant values and corresponding data > 0 and < 5 are suppressed for privacy purposes.

**Currently prescribing Antiretroviral Treatment:** number of prescribers of antiretroviral treatment dispensed in the previous 6 months (based on participant HA/HSDA)

**Currently treated:** number of participants with antiretroviral treatment dispensed in the previous 6 months by antiretroviral treatment prescribers (based on follow-up prescriber HA/HSDA)

**Prescribers ever prescribed Antiretroviral Treatment:** for participants residing in HA/HSDA

**Participants ever treated by prescribers:** where follow-up prescriber is in the HA/HSDA

**Participants with Prescriber out of HA/HSDA:** participants residing in specified HA/HSDA with follow-up prescriber(s) in another HA/HSDA



**4.13 Distribution of Participants by Age & Sex at Birth NORTHERN Health Authority (HA)**

Health Service Delivery Area	Age Group	# Enrolled	# on ART	# First Starts	# CD4 Tested	Median CD4	# pVL Tested	Median pVL
NORTH EAST	0 - 29	*	*	0	*	*	*	*
	30 - 49	*	*	0	*	*	*	*
	50 - 64	*	*	0	*	*	*	*
	65+	*	*	0	*	*	*	*
	<b>Total HSDA:</b>	<b>46</b>	<b>35</b>	<b>0</b>	<b>42</b>	<b>620</b>	<b>30</b>	<b>&lt;40</b>
NORTH WEST	0 - 29	*	*	0	*	*	*	*
	30 - 49	*	*	0	*	*	*	*
	50 - 64	*	*	0	*	*	*	*
	65+	*	*	0	*	*	*	*
	<b>Total HSDA:</b>	<b>72</b>	<b>63</b>	<b>0</b>	<b>68</b>	<b>585</b>	<b>51</b>	<b>&lt;40</b>
NORTHERN INTERIOR	0 - 29	8	8	0	8	1100	7	<40
	30 - 49	62	52	0	54	755	43	<40
	50 - 64	67	60	0	64	545	49	<40
	65+	34	33	0	34	440	27	<40
	<b>Total HSDA:</b>	<b>171</b>	<b>153</b>	<b>0</b>	<b>160</b>	<b>605</b>	<b>126</b>	<b>&lt;40</b>
<b>Total HA:</b>		<b>289</b>	<b>251</b>	<b>0</b>	<b>270</b>	<b>600</b>	<b>207</b>	<b>&lt;40</b>

	Age Group	# Enrolled	# on ART	# First Starts	# CD4 Tested	Median CD4	# pVL Tested	Median pVL
	0 - 29	16	14	0	16	795	13	<40
	30 - 49	102	82	0	87	630	66	<40
	50 - 64	118	102	0	113	570	85	<40
	65+	53	53	0	54	510	43	<40
<b>Total HA:</b>		<b>289</b>	<b>251</b>	<b>0</b>	<b>270</b>	<b>600</b>	<b>207</b>	<b>&lt;40</b>

Sex at Birth	# Enrolled	# on ART	# First Starts	# CD4 Tested	Median CD4	# pVL Tested	Median pVL
Male	189	168	0	177	630	133	<40
Female	100	83	0	93	570	74	<40
Unknown	0	0	0	0	N/A	0	N/A

Currently on antiretroviral treatment	# of Participants	Median Age	Median CD4	Median pVL
<b>Total HA:</b>	<b>251</b>	<b>54</b>	<b>630</b>	<b>&lt;40</b>

\* Participant values and corresponding data > 0 and < 5 are suppressed for privacy purposes.

# **Enrolled**: Participants who had enrolled in the HIV Treatment Program, but not known to be deceased or formally reported as moved out of program  
 # **on ART**: # of participants on antiretroviral treatment (ART) in the specified month based on dispensing record  
 # **CD4** or **pVL** tested: participants tested for CD4 or pVL within the past 12 months and 6 months, respectively (CD4 in cells/ $\mu$ L and pVL in copies/mL)



**4.14 Distribution of Participants by Program Duration NORTHERN Health Authority**

HSDA	Program Duration	# Enrolled	# on ART	# First Starts	# CD4 Tested	Median CD4	# pVL Tested	Median pVL
NORTH EAST	10 years or more	*	*	0	*	*	*	*
	5 years or more	*	*	0	*	*	*	*
	<5 years	*	*	0	*	*	*	*
	Never on ART	*	*	0	*	*	*	*
	<b>Total HSDA:</b>	<b>46</b>	<b>35</b>	<b>0</b>	<b>42</b>	<b>620</b>	<b>30</b>	<b>&lt;40</b>
NORTH WEST	10 years or more	49	42	0	46	605	32	<40
	5 years or more	8	8	0	8	580	6	<40
	<5 years	15	13	0	14	530	13	<40
	Never on ART	0	0	0	0	N/A	0	N/A
	<b>Total HSDA:</b>	<b>72</b>	<b>63</b>	<b>0</b>	<b>68</b>	<b>585</b>	<b>51</b>	<b>&lt;40</b>
NORTHERN INTERIOR	10 years or more	115	105	0	113	560	89	<40
	5 years or more	31	25	0	26	720	22	<40
	<5 years	25	23	0	21	610	15	<40
	Never on ART	0	0	0	0	N/A	0	N/A
	<b>Total HSDA:</b>	<b>171</b>	<b>153</b>	<b>0</b>	<b>160</b>	<b>605</b>	<b>126</b>	<b>&lt;40</b>
<b>Total HA:</b>		<b>289</b>	<b>251</b>	<b>0</b>	<b>270</b>	<b>600</b>	<b>207</b>	<b>&lt;40</b>

	Program Duration	# Enrolled	# on ART	# First Starts	# CD4 Tested	Median CD4	# pVL Tested	Median pVL
	10 years or more	188	164	0	179	600	136	<40
	5 years or more	43	35	0	38	580	30	<40
	<5 years	58	52	0	53	610	41	<40
	Never on ART	0	0	0	0	N/A	0	N/A
<b>Total HA:</b>		<b>289</b>	<b>251</b>	<b>0</b>	<b>270</b>	<b>600</b>	<b>207</b>	<b>&lt;40</b>

\* Participant values and corresponding data > 0 and < 5 are suppressed for privacy purposes.

# **Enrolled:** Participants who had enrolled in HIV Treatment Program, not known to be deceased or formally reported as moved out of program

# **on ART:** Participants on antiretroviral treatment (ART) in the specified month based on dispensing record (as above footnote)

**Program Duration:** years since first antiretroviral treatment dispensing in BC HIV Treatment Program

# **CD4 or pVL tested:** participants tested for CD4 or pVL within the past 12 months and 6 months, respectively





4.15 Distribution of Antiretroviral Treatment Prescribers NORTHERN Health Authority

HSDA of Prescriber Residency	# of Prescribers currently prescribing Antiretroviral Treatment	# of Participants currently treated by Prescribers	# of Prescribers ever prescribed Antiretroviral Treatment	# of Participants ever treated by Prescribers
NORTH EAST	1	*	37	50
NORTH WEST	14	*	94	179
NORTHERN INTERIOR	18	*	129	560
<b>Total:</b>	<b>33</b>	<b>232</b>	<b>260</b>	<b>789</b>

HSDA of Participant Residency	# of Participants with Prescriber out of HA/HSDA
NORTH EAST	9
NORTH WEST	28
NORTHERN INTERIOR	21
<b>Total:</b>	<b>58</b>

\* Participant values and corresponding data > 0 and < 5 are suppressed for privacy purposes.

**Currently prescribing Antiretroviral Treatment:** number of prescribers of antiretroviral treatment dispensed in the previous 6 months (based on participant HA/HSDA)

**Currently treated:** number of participants with antiretroviral treatment dispensed in the previous 6 months by antiretroviral treatment prescribers (based on follow-up prescriber HA/HSDA)

**Prescribers ever prescribed Antiretroviral Treatment:** for participants residing in HA/HSDA

**Participants ever treated by prescribers:** where follow-up prescriber is in the HA/HSDA

**Participants with Prescriber out of HA/HSDA:** participants residing in specified HA/HSDA with follow-up prescriber(s) in another HA/HSDA



**4.16 Distribution of Indigenous Participants by Health Service Delivery Area and Sex at Birth**

HA	HSDA	# Enrolled	# on ART	# First Starts	# CD4 Tested	Median CD4	# pVL Tested	Median pVL
INTERIOR	EAST KOOTENAY	*	*	0	*	*	*	*
	KOOTENAY BOUNDARY	*	*	0	*	*	*	*
	OKANAGAN	*	*	0	*	*	*	*
	THOMPSON/CARIBOO/SHUSWAP	*	*	0	*	*	*	*
	<b>Total HA:</b>	<b>56</b>	<b>48</b>	<b>0</b>	<b>48</b>	<b>510</b>	<b>43</b>	<b>&lt;40</b>
FRASER	FRASER EAST	33	29	0	25	640	24	<40
	FRASER NORTH	36	33	0	28	435.5	32	<40
	FRASER SOUTH	59	53	0	38	550	43	<40
	<b>Total HA:</b>	<b>128</b>	<b>115</b>	<b>0</b>	<b>91</b>	<b>550</b>	<b>99</b>	<b>&lt;40</b>
VANCOUVER COASTAL	NORTH SHORE/COAST GARIBALDI	28	*	0	23	690	21	<40
	RICHMOND	5	*	0	5	550	5	<40
	VANCOUVER	358	*	0	326	488	302	<40
	<b>Total HA:</b>	<b>391</b>	<b>365</b>	<b>0</b>	<b>354</b>	<b>510</b>	<b>328</b>	<b>&lt;40</b>
VANCOUVER ISLAND	CENTRAL VANCOUVER ISLAND	47	44	0	25	510	36	<40
	NORTH VANCOUVER ISLAND	15	11	0	7	440	9	<40
	SOUTH VANCOUVER ISLAND	42	35	0	14	625	30	<40
	<b>Total HA:</b>	<b>104</b>	<b>90</b>	<b>0</b>	<b>46</b>	<b>520</b>	<b>75</b>	<b>&lt;40</b>
NORTHERN	NORTH EAST	11	8	0	10	470	8	<40
	NORTH WEST	35	30	0	32	500	23	<40
	NORTHERN INTERIOR	62	53	0	61	480	48	<40
	<b>Total HA:</b>	<b>108</b>	<b>91</b>	<b>0</b>	<b>103</b>	<b>490</b>	<b>79</b>	<b>&lt;40</b>
<b>Total:</b>		<b>787</b>	<b>709</b>	<b>0</b>	<b>642</b>	<b>510</b>	<b>624</b>	<b>&lt;40</b>

Sex at Birth	# Enrolled	# on Antiretroviral Treatment	# First Starts	# CD4 Tested	Median CD4	# pVL Tested	Median pVL
Male	492	454	0	390	500	399	<40
Female	295	255	0	252	540	225	<40
Unknown	0	0	0	0	N/A	0	N/A

Currently on antiretroviral treatment	# of Participants	Median Age	Median CD4	Median pVL
<b>Total:</b>	<b>709</b>	<b>55</b>	<b>530</b>	<b>&lt;40</b>

\* Participant values and corresponding data > 0 and < 5 are suppressed for privacy purposes.

# **Enrolled:** Participants who had enrolled in the HIV Treatment Program, but not known to be deceased or formally reported as moved out of program

# **on Antiretroviral Treatment:** defined as # of Participants being on antiretroviral treatment in the specified month

# **CD4 or pVL tested:** participants tested for CD4 or pVL within the past 12 months and 6 months, respectively (CD4 in cells/ $\mu$ L and pVL in copies/mL)





BRITISH COLUMBIA  
CENTRE *for* EXCELLENCE  
*in* HIV/AIDS

---

Funding for the BC Centre for Excellence in HIV/AIDS and HIV Drug Treatment Program provided in-part by:

