

We acknowledge that the land on which we work, learn and organize is the traditional, ancestral and unceded homelands of the Skwxwú7mesh (Squamish), xwməθkwəy̓m (Musqueam), and Səlil̓wətaʔ/Selilwitulh (Tsleil-Waututh) Nations.

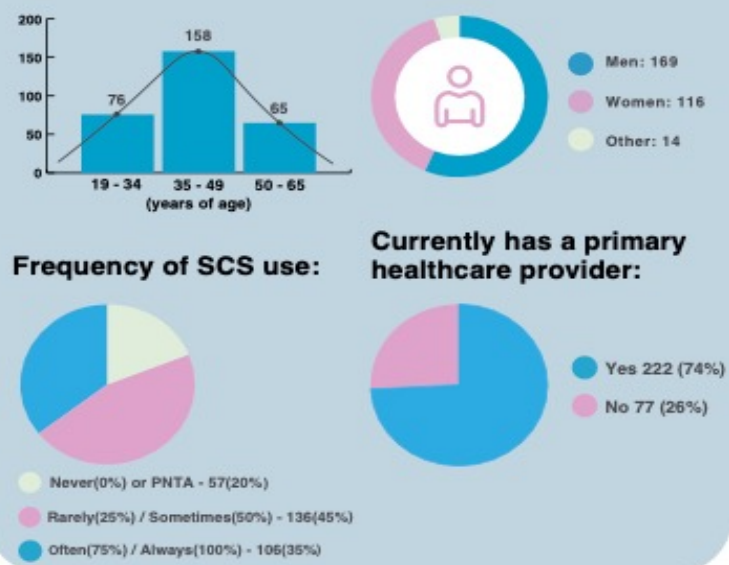
STUDY OVERVIEW

The Health Connect project aims to characterize access to primary and community healthcare among a cohort of clients at the Hope to Health (H2H) supervised-consumption- site (SCS). The project evaluates a patient-centered linkage-to- care intervention for participants who engaged in STBBI dried-blood-spot (DBS) testing at the H2H SCS. The study wrapped primary data collection following completion of 305 phase 2 baseline surveys.

HEALTH CONNECT DATA COLLECTION

PHASE 1

The research team successfully completed 299 baseline interviews between January and November 2024 and found DBS to be an acceptable means of screening for STBBIs among this priority population. A total of 258/299 (86%) individuals chose to engage in DBS testing for HCV, HIV and syphilis. Encouragingly, 149/288 (52%) of participants reported being offered some form of STBBI testing in the previous 12-months.



PHASE 2

Phase 2 of the Health Connect study launched in September 2025 (open cohort design, with a particular focus on retaining folks from phase 1). This phase focused solely on the Health Connect interviewer administered survey. Data collection for this phase wrapped in February 2026 following 305 participant interviews.

DRIED-BLOOD-SPOT TESTING SCALE-UP

The Health Connect team, with the support of our knowledge translation coordinator, submitted a catalyst grant application to CIHR in October 2025. If successful, these funds will help support the development of a plan for scaling up DBS in community settings . We will collaborate with a wide range of partners across Canada in order to mobilize knowledge around the potential role and impact of DBS testing and suggest how it may be used to better engage people who might not otherwise be tested.

RESEARCH SPOTLIGHT!



In February, Nandini presented her analysis characterizing STBBI testing practices among clients of the H2H SCS and evaluating barriers and facilitators for the same. Nandini and Douglas will present this analysis at CAHR 2026 taking place April 23rd-26th in Winnipeg.

WANT TO KNOW MORE? GET IN TOUCH!

If you want to know more or have research questions that you think the Health Connect project may be well positioned to help address, please get in touch. In other words, if you want to get involved in this work, let us know how we can collaborate with you! (ahannigan@bccfe.ca or 604-416-1565).

Principal Investigator
Dr. Kate Salfers

Clinical Research Coordinator
Alannah Hannigan

Research Assistant
Nandini Krishnan

Peer
Douglas Vickers

