



BRITISH COLUMBIA  
CENTRE *for* EXCELLENCE  
*in* HIV/AIDS

# BC HIV Treatment Program

Monthly Report  
**April 2025**



## FOREWORD

The British Columbia Centre for Excellence in HIV/AIDS (BC-CfE) is a provincial treatment and research program, with the mandate to improve the health of people living with HIV (“PLWH”), and those at elevated risk of acquiring HIV in British Columbia (BC), by advancing and promoting programs for treatment and prevention of HIV, and related conditions, guided by Treatment as Prevention® (TasP®) principles. Funded by the BC’s Ministry of Health, through the province’s PharmaCare Program, the BC-CfE’s Drug Treatment Programs provide medications for HIV treatment, prevention, and select related conditions, at no charge, to medically eligible BC residents living with HIV, or at elevated risk of HIV acquisition. The provision of these medications are based on guidelines developed by the BC-CfE’s Committee for Drug Evaluation and Therapy (CDET) and program consideration.

A key component of the BC-CfE’s mandate is to monitor and evaluate its HIV Treatment Program, reporting on a regular basis and providing essential information to BC’s health authorities, treating clinicians, and the community at large. This HIV Treatment Program Report provides an overview of the use of antiretroviral medications in BC for the treatment of HIV, common drug combinations, key monitoring parameters, and distribution of program participants throughout the province.

Figures and graphs in this document are best viewed in colour.

Please note that any comments or queries regarding this report should be forwarded to [info@bccfe.ca](mailto:info@bccfe.ca).

### BC Centre for Excellence in HIV/AIDS Drug Treatment Programs

St. Paul’s Hospital  
687 - 1081 Burrard Street  
Vancouver, BC  
V6Z 1Y6

Tel: 604.806.8515  
Fax: 604.806.9044

Website: [www.bccfe.ca](http://www.bccfe.ca)  
Email: [info@bccfe.ca](mailto:info@bccfe.ca)

Funding for the BC Centre for Excellence in HIV/AIDS is provided through BC’s PharmaCare and Ministry of Health.

**DISCLAIMER:** All information presented in this report is generated from a secure, live database maintained by the BC-CfE. Privacy and confidentiality are matters which are taken very seriously and strict rules and procedures are applied to ensure that the information stored is secure.

Figures and tables provided in this report represent the best estimates at the time the document was generated, and may be subject to change. Please be advised that the information in this document is provided in good faith and is derived from sources understood to be accurate and up-to-date at the report’s date of publication.

© 2026 BC Centre for Excellence in HIV/AIDS



## TABLE OF CONTENTS

### 1. List of Figures

- 1.1 Distribution of Participants on Antiretroviral Treatment in British Columbia by Health Authority
- 1.2 Distribution of Participants in HIV Treatment Program by Regimen Category
- 1.3 Distribution of Participants in HIV Treatment Program by Regimen Category
- 1.4 Distribution of Participants on Nucleos(t)ide Analogue Reverse Transcriptase Inhibitors by INGREDIENT
- 1.5 Number of Participants on Nucleos(t)ide Analogue Reverse Transcriptase Inhibitors by INGREDIENT
- 1.6 Distribution of Participants on Protease Inhibitors by INGREDIENT
- 1.7 Number of Participants on Protease Inhibitors by INGREDIENT
- 1.8 Distribution of Participants on Non-Nucleoside Analogue Reverse Transcriptase Inhibitors by INGREDIENT
- 1.9 Number of Participants on Non-Nucleoside Analogue Reverse Transcriptase Inhibitors by INGREDIENT
- 1.10 Distribution of Participants on Integrase Inhibitors by INGREDIENT
- 1.11 Number of Participants on Integrase Inhibitors by INGREDIENT
- 1.12 Distribution of Participants on Other Antiretroviral Drug Classes by INGREDIENT
- 1.13 Number of Participants on Other Antiretroviral Drug Classes by INGREDIENT
- 1.14 Distribution of Participants on Antiretroviral Treatment by Number of Antiretrovirals (graph)
- 1.15 Distribution of Participants on Antiretroviral Treatment by Number of Antiretrovirals (table)
- 1.16 Percent Distribution of Active Participants by CD4 Count
- 1.17 Distribution of Active Participants by CD4 Count
- 1.18 Initial Regimen Composition for Antiretroviral Treatment Naïve Participants Starting Treatment (graph)
- 1.19 Initial Regimen Composition for Antiretroviral Treatment Naïve Participants Starting Treatment (table)
- 1.20 Pre-entry CD4 for Antiretroviral Treatment Naïve Participants in the HIV Treatment Program (graph)
- 1.21 Pre-entry CD4 for Antiretroviral Treatment Naïve Participants in the HIV Treatment Program (table)
- 1.22 Antiretroviral Resistance by Drug Class Among Participants on Antiretroviral Treatment (graph)
- 1.23 Antiretroviral Resistance by Drug Class Among Participants on Antiretroviral Treatment (table)
- 1.24 Active Participants by number of Antiretroviral Drug Classes with Resistance (graph)
- 1.25 Active Participants by number of Antiretroviral Drug Classes with Resistance (table)

### 2. List of Tables

- 2.1 Active participants by Year of Program Initiation (1987 - 2025) - as of January 2025
- 2.2 HIV Viral Load (copies/mL) and CD4 (cells/ $\mu$ L) for Participants on Antiretroviral Treatment
- 2.3 BC-CfE HIV Treatment Program Enrolment

### 3. Distribution of HIV Treatment Program Active Participants

- 3.1 Provincial Health Authorities
- 3.2 Interior Health Authority & Kelowna
- 3.3 Fraser Health Authority & Surrey
- 3.4 Vancouver Coastal Health Authority & Vancouver
- 3.5 Vancouver Island Health Authority & Victoria
- 3.6 Northern Health Authority & Prince George

## TABLE OF CONTENTS (continued)

### 4. Health Authority Tables

#### INTERIOR HEALTH

- 4.1 Distribution of Participants by Age & Sex at Birth
- 4.2 Distribution of Participants by Program Duration
- 4.3 Distribution of Antiretroviral Treatment Prescribers

#### FRASER HEALTH

- 4.4 Distribution of Participants by Age & Sex at Birth
- 4.5 Distribution of Participants by Program Duration
- 4.6 Distribution of Antiretroviral Treatment Prescribers

#### VANCOUVER COASTAL

- 4.7 Distribution of Participants by Age & Sex at Birth
- 4.8 Distribution of Participants by Program Duration
- 4.9 Distribution of Antiretroviral Treatment Prescribers

#### VANCOUVER ISLAND

- 4.10 Distribution of Participants by Age & Sex at Birth
- 4.11 Distribution of Participants by Program Duration
- 4.12 Distribution of Antiretroviral Treatment Prescribers

#### NORTHERN HEALTH

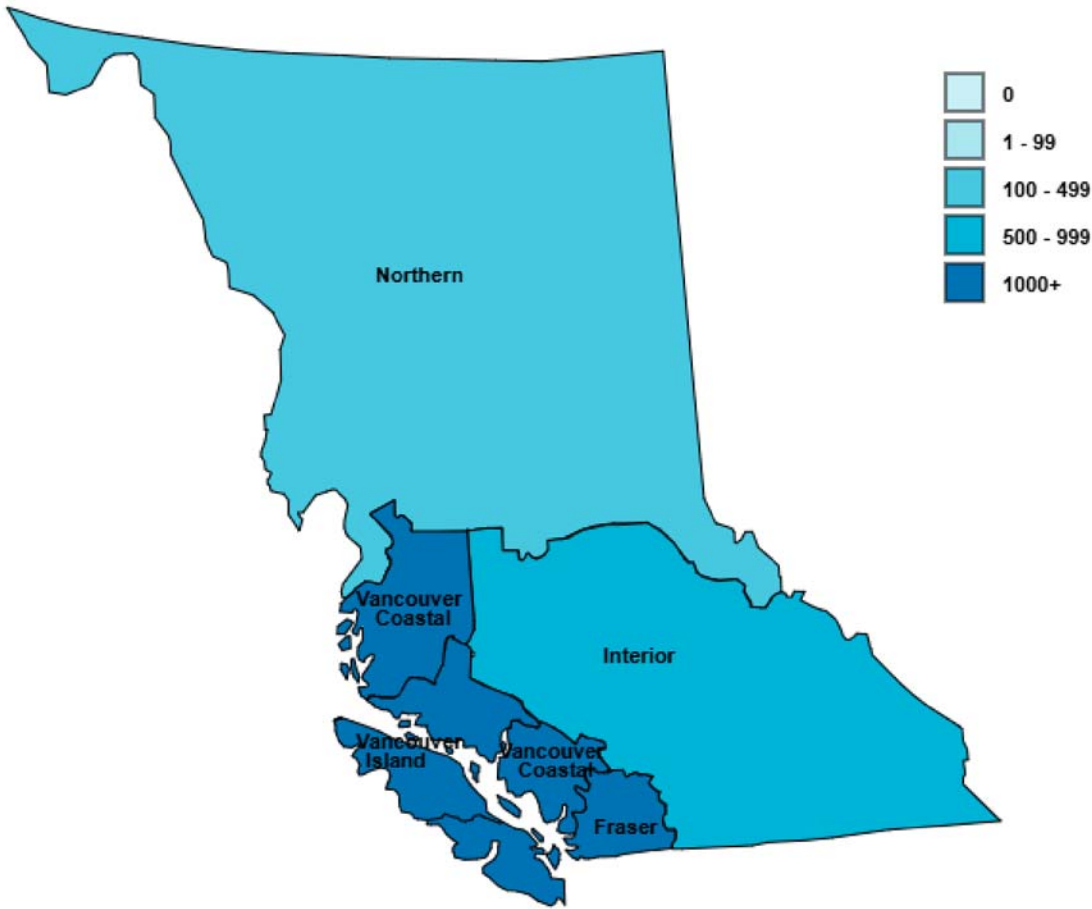
- 4.13 Distribution of Participants by Age & Sex at Birth
- 4.14 Distribution of Participants by Program Duration
- 4.15 Distribution of Antiretroviral Treatment Prescribers

#### INDIGENOUS PARTICIPANTS

- 4.16 Distribution of Indigenous Participants by Health Service Delivery Area and Sex at Birth



1.1 Distribution of Participants on Antiretroviral Treatment in British Columbia by Health Authority  
April 2025  
N = 7719

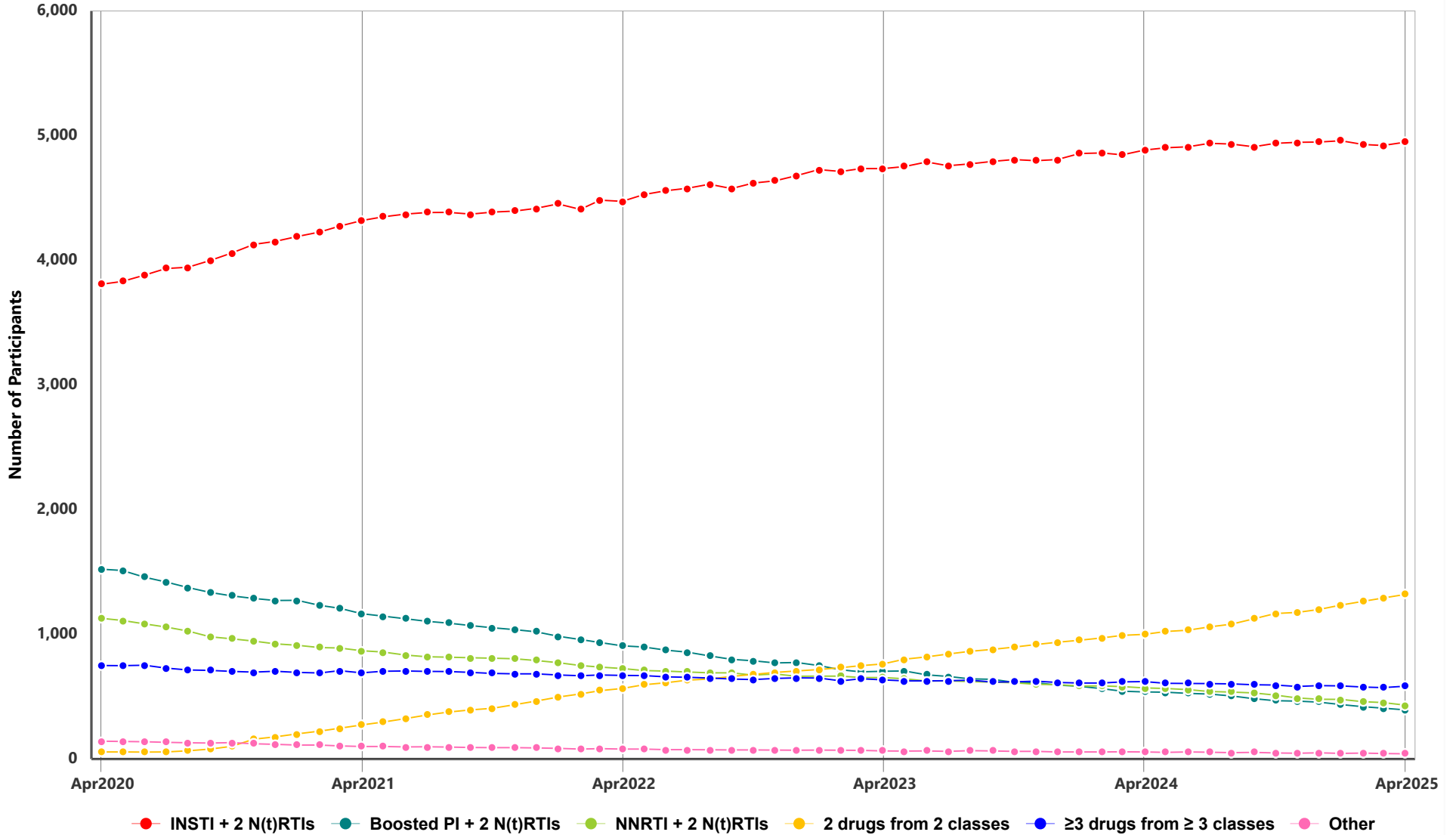


Health Authority	Male	Female	All
FRASER	1614	501	2115
VANCOUVER ISLAND	893	176	1069
VANCOUVER COASTAL	3216	444	3660
INTERIOR	500	120	620
NORTHERN	167	77	244
	<b>6390</b>	<b>1318</b>	<b>7708</b>
<b>Unknown/not stated</b>			<b>11</b>
<b>Total</b>			<b>7719</b>

On antiretroviral treatment is defined as being on treatment in the current month  
**Unknown/not stated** is defined as being on treatment in the current month, and city of residence is unknown  
**Male & Female** refer to Sex assigned at birth



1.2 Distribution of Participants in HIV Treatment Program by Regimen Category  
April 2020 - April 2025



**1.3 Distribution of Participants in HIV Treatment Program by Regimen Category**

MON-YYYY	Total	INSTI		Boosted PI		NNRTI		2 drugs from 2 classes		≥3 drugs from ≥3 classes		Other	
		n	%	n	%	n	%	n	%	n	%	n	%
MAY-2023	7592	4752	62.6	706	9.3	644	8.5	800	10.5	627	8.3	63	0.8
JUN-2023	7599	4788	63.0	675	8.9	625	8.2	819	10.8	627	8.3	65	0.9
JUL-2023	7577	4758	62.8	662	8.7	626	8.3	842	11.1	628	8.3	61	0.8
AUG-2023	7600	4773	62.8	643	8.5	621	8.2	864	11.4	632	8.3	67	0.9
SEP-2023	7609	4793	63.0	639	8.4	616	8.1	879	11.6	617	8.1	65	0.9
OCT-2023	7610	4808	63.2	615	8.1	611	8.0	897	11.8	618	8.1	61	0.8
NOV-2023	7612	4799	63.0	611	8.0	599	7.9	918	12.1	624	8.2	61	0.8
DEC-2023	7603	4808	63.2	593	7.8	596	7.8	936	12.3	614	8.1	56	0.7
JAN-2024	7642	4856	63.5	583	7.6	585	7.7	952	12.5	609	8.0	57	0.7
FEB-2024	7647	4861	63.6	564	7.4	586	7.7	971	12.7	609	8.0	56	0.7
MAR-2024	7636	4846	63.5	543	7.1	580	7.6	991	13.0	618	8.1	58	0.8
APR-2024	7670	4884	63.7	538	7.0	570	7.4	1000	13.0	621	8.1	57	0.7
MAY-2024	7687	4902	63.8	536	7.0	566	7.4	1023	13.3	607	7.9	53	0.7
JUN-2024	7687	4910	63.9	526	6.8	556	7.2	1033	13.4	606	7.9	56	0.7
JUL-2024	7718	4938	64.0	520	6.7	541	7.0	1060	13.7	605	7.8	54	0.7
AUG-2024	7709	4933	64.0	505	6.6	537	7.0	1081	14.0	602	7.8	51	0.7
SEP-2024	7697	4911	63.8	484	6.3	530	6.9	1124	14.6	595	7.7	53	0.7
OCT-2024	7725	4938	63.9	467	6.0	512	6.6	1167	15.1	593	7.7	48	0.6
NOV-2024	7703	4946	64.2	464	6.0	490	6.4	1176	15.3	581	7.5	46	0.6
DEC-2024	7720	4949	64.1	456	5.9	479	6.2	1199	15.5	588	7.6	49	0.6
JAN-2025	7739	4959	64.1	437	5.6	478	6.2	1234	15.9	586	7.6	45	0.6
FEB-2025	7696	4929	64.0	419	5.4	460	6.0	1264	16.4	577	7.5	47	0.6
MAR-2025	7689	4921	64.0	408	5.3	453	5.9	1291	16.8	572	7.4	44	0.6
APR-2025	7719	4947	64.1	394	5.1	432	5.6	1320	17.1	584	7.6	42	0.5

**n** is number of participants on the specified regimen class in the specified month

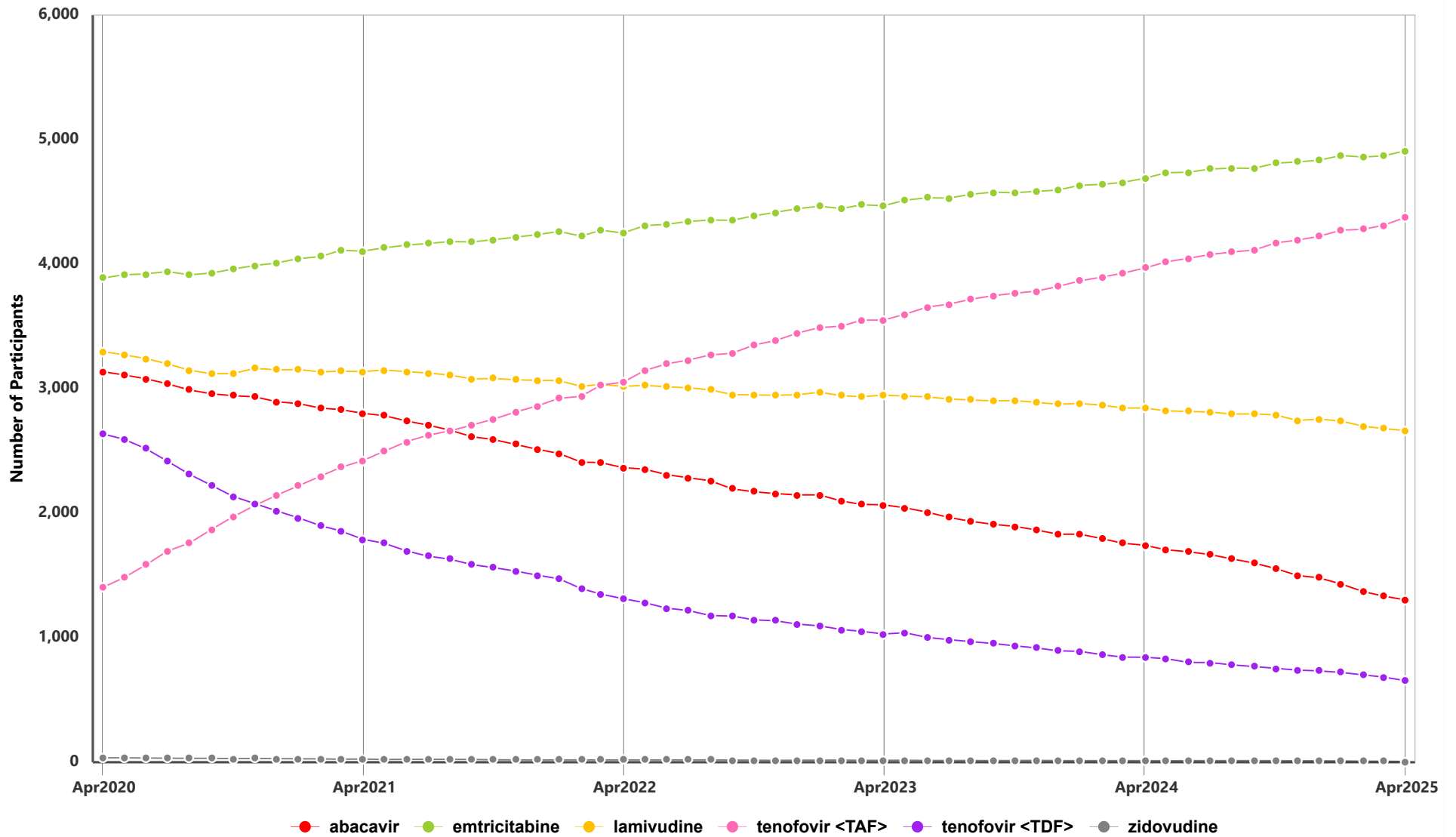
**%** is ratio of **n** and total number of participants on antiretroviral treatment in the specified month

**INSTI:** Integrase Inhibitor, **PI:** Protease Inhibitor, **NNRTI:** Non-Nucleoside Analogue Reverse Transcriptase Inhibitor,

**N(t)RTI:** Nucleos(t)ide Analogue Reverse Transcriptase Inhibitor



1.4 Distribution of Participants on Nucleos(t)ide Analogue Reverse Transcriptase Inhibitors by INGREDIENT  
April 2020 - April 2025



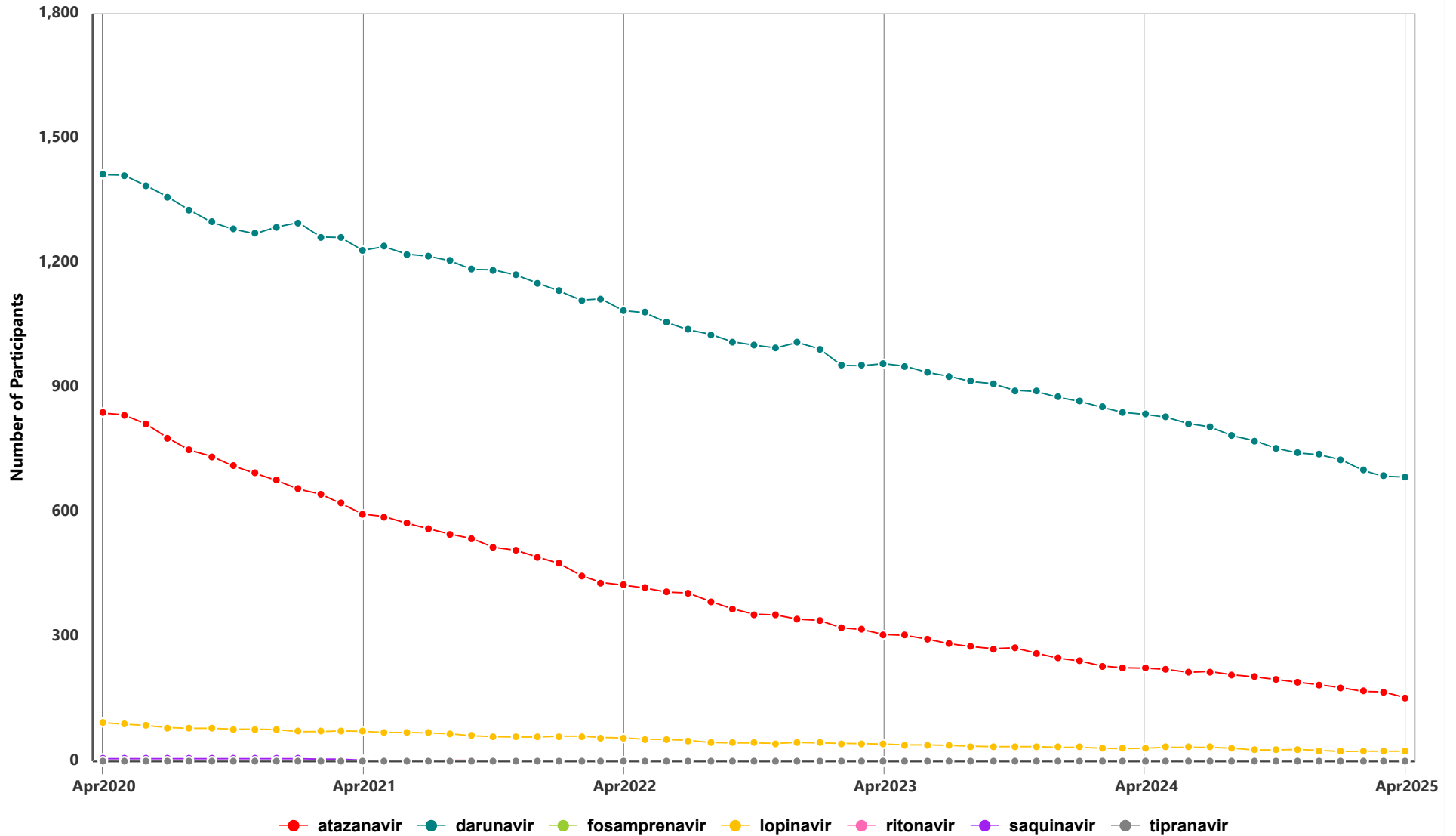
**1.5 Number of Participants on Nucleos(t)ide Analogue Reverse Transcriptase Inhibitors by INGREDIENT**

MON-YYYY	Total Participants	abacavir		emtricitabine		lamivudine		tenofovir <TAF>		tenofovir <TDF>		zidovudine	
		n	%	n	%	n	%	n	%	n	%	n	%
MAY-2023	<b>7451</b>	2043	27.4	4513	60.6	2940	39.5	3598	48.3	1040	14.0	16	0.2
JUN-2023	<b>7460</b>	2008	26.9	4533	60.8	2934	39.3	3655	49.0	1002	13.4	14	0.2
JUL-2023	<b>7438</b>	1966	26.4	4530	60.9	2917	39.2	3678	49.5	985	13.2	14	0.2
AUG-2023	<b>7467</b>	1935	25.9	4561	61.1	2909	39.0	3717	49.8	969	13.0	14	0.2
SEP-2023	<b>7478</b>	1910	25.5	4578	61.2	2902	38.8	3746	50.1	954	12.8	13	0.2
OCT-2023	<b>7474</b>	1895	25.4	4573	61.2	2904	38.9	3766	50.4	935	12.5	14	0.2
NOV-2023	<b>7474</b>	1866	25.0	4585	61.4	2891	38.7	3783	50.6	918	12.3	15	0.2
DEC-2023	<b>7464</b>	1831	24.5	4595	61.6	2874	38.5	3820	51.2	895	12.0	13	0.2
JAN-2024	<b>7502</b>	1831	24.4	4633	61.8	2881	38.4	3866	51.5	890	11.9	13	0.2
FEB-2024	<b>7504</b>	1795	23.9	4641	61.9	2868	38.2	3896	51.9	864	11.5	13	0.2
MAR-2024	<b>7493</b>	1759	23.5	4656	62.1	2845	38.0	3927	52.4	844	11.3	13	0.2
APR-2024	<b>7525</b>	1742	23.2	4690	62.3	2844	37.8	3968	52.7	843	11.2	13	0.2
MAY-2024	<b>7544</b>	1706	22.6	4734	62.8	2822	37.4	4018	53.3	832	11.0	12	0.2
JUN-2024	<b>7544</b>	1691	22.4	4738	62.8	2817	37.3	4047	53.7	801	10.6	13	0.2
JUL-2024	<b>7570</b>	1667	22.0	4763	62.9	2812	37.2	4077	53.9	800	10.6	13	0.2
AUG-2024	<b>7563</b>	1633	21.6	4771	63.1	2796	37.0	4097	54.2	782	10.3	13	0.2
SEP-2024	<b>7551</b>	1600	21.2	4769	63.2	2797	37.0	4113	54.5	768	10.2	13	0.2
OCT-2024	<b>7577</b>	1556	20.5	4810	63.5	2789	36.8	4170	55.0	754	10.0	13	0.2
NOV-2024	<b>7555</b>	1499	19.8	4821	63.8	2744	36.3	4193	55.5	739	9.8	11	0.2
DEC-2024	<b>7572</b>	1481	19.6	4835	63.9	2756	36.4	4223	55.8	734	9.7	11	0.2
JAN-2025	<b>7591</b>	1431	18.9	4873	64.2	2740	36.1	4273	56.3	721	9.5	10	0.1
FEB-2025	<b>7547</b>	1370	18.2	4860	64.4	2698	35.8	4280	56.7	701	9.3	8	0.1
MAR-2025	<b>7537</b>	1335	17.7	4869	64.6	2680	35.6	4312	57.2	684	9.1	8	0.1
APR-2025	<b>7557</b>	1304	17.3	4909	65.0	2664	35.3	4374	57.9	655	8.7	6	0.1

**n** is defined as number of participants on antiretroviral treatment which contains the INGREDIENT;  
**%** is calculated as ratio of "n" and number of participants whose treatment is of the given antiretroviral drug class



1.6 Distribution of Participants on Protease Inhibitors by INGREDIENT  
April 2020 - April 2025

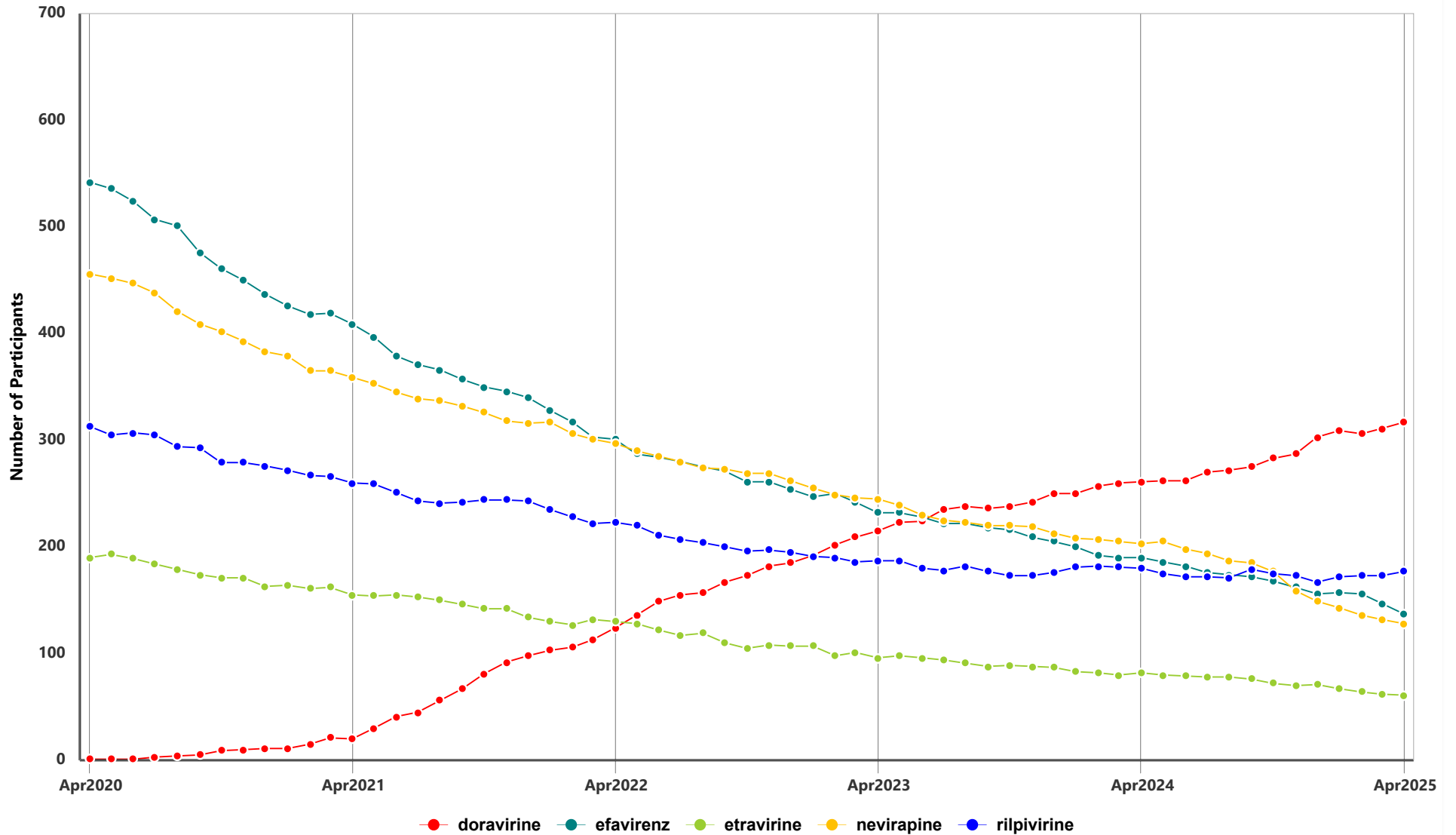


**1.7 Number of Participants on Protease Inhibitors by INGREDIENT**

MON-YYYY	Total Participants	atazanavir		darunavir		lopinavir		ritonavir		tipranavir	
		n	%	n	%	n	%	n	%	n	%
MAY-2023	1291	303	23.5	951	73.7	39	3.0	1	0.1	1	0.1
JUN-2023	1267	294	23.2	936	73.9	39	3.1	1	0.1	1	0.1
JUL-2023	1247	283	22.7	927	74.3	38	3.1	1	0.1	1	0.1
AUG-2023	1225	276	22.5	914	74.6	36	2.9	0	0.0	0	0.0
SEP-2023	1214	271	22.3	909	74.9	35	2.9	0	0.0	0	0.0
OCT-2023	1198	273	22.8	893	74.5	35	2.9	0	0.0	0	0.0
NOV-2023	1184	260	22.0	890	75.2	35	3.0	0	0.0	0	0.0
DEC-2023	1156	248	21.5	876	75.8	33	2.9	0	0.0	0	0.0
JAN-2024	1138	241	21.2	866	76.1	33	2.9	0	0.0	0	0.0
FEB-2024	1111	229	20.6	852	76.7	31	2.8	0	0.0	0	0.0
MAR-2024	1094	225	20.6	840	76.8	30	2.7	0	0.0	0	0.0
APR-2024	1088	224	20.6	835	76.8	31	2.9	0	0.0	0	0.0
MAY-2024	1081	221	20.4	828	76.6	33	3.1	0	0.0	0	0.0
JUN-2024	1059	214	20.2	813	76.8	33	3.1	0	0.0	0	0.0
JUL-2024	1052	216	20.5	805	76.5	33	3.1	0	0.0	0	0.0
AUG-2024	1021	208	20.4	784	76.8	31	3.0	0	0.0	0	0.0
SEP-2024	1001	203	20.3	772	77.1	27	2.7	0	0.0	0	0.0
OCT-2024	977	197	20.2	754	77.2	27	2.8	0	0.0	0	0.0
NOV-2024	957	190	19.9	742	77.5	28	2.9	0	0.0	0	0.0
DEC-2024	947	184	19.4	738	77.9	26	2.8	0	0.0	0	0.0
JAN-2025	922	177	19.2	726	78.7	23	2.5	0	0.0	0	0.0
FEB-2025	891	168	18.9	700	78.6	24	2.7	0	0.0	0	0.0
MAR-2025	875	167	19.1	686	78.4	24	2.7	0	0.0	0	0.0
APR-2025	860	153	17.8	684	79.5	24	2.8	0	0.0	0	0.0

n is defined as number of participants on antiretroviral treatment which contains the INGREDIENT;  
 % is calculated as ratio of "n" and number of participants whose treatment is of the given antiretroviral drug class  
 Ritonavir - greater than 400 mg total daily dose

1.8 Distribution of Participants on Non-Nucleoside Analogue Reverse Transcriptase Inhibitors by INGREDIENT  
April 2020 - April 2025

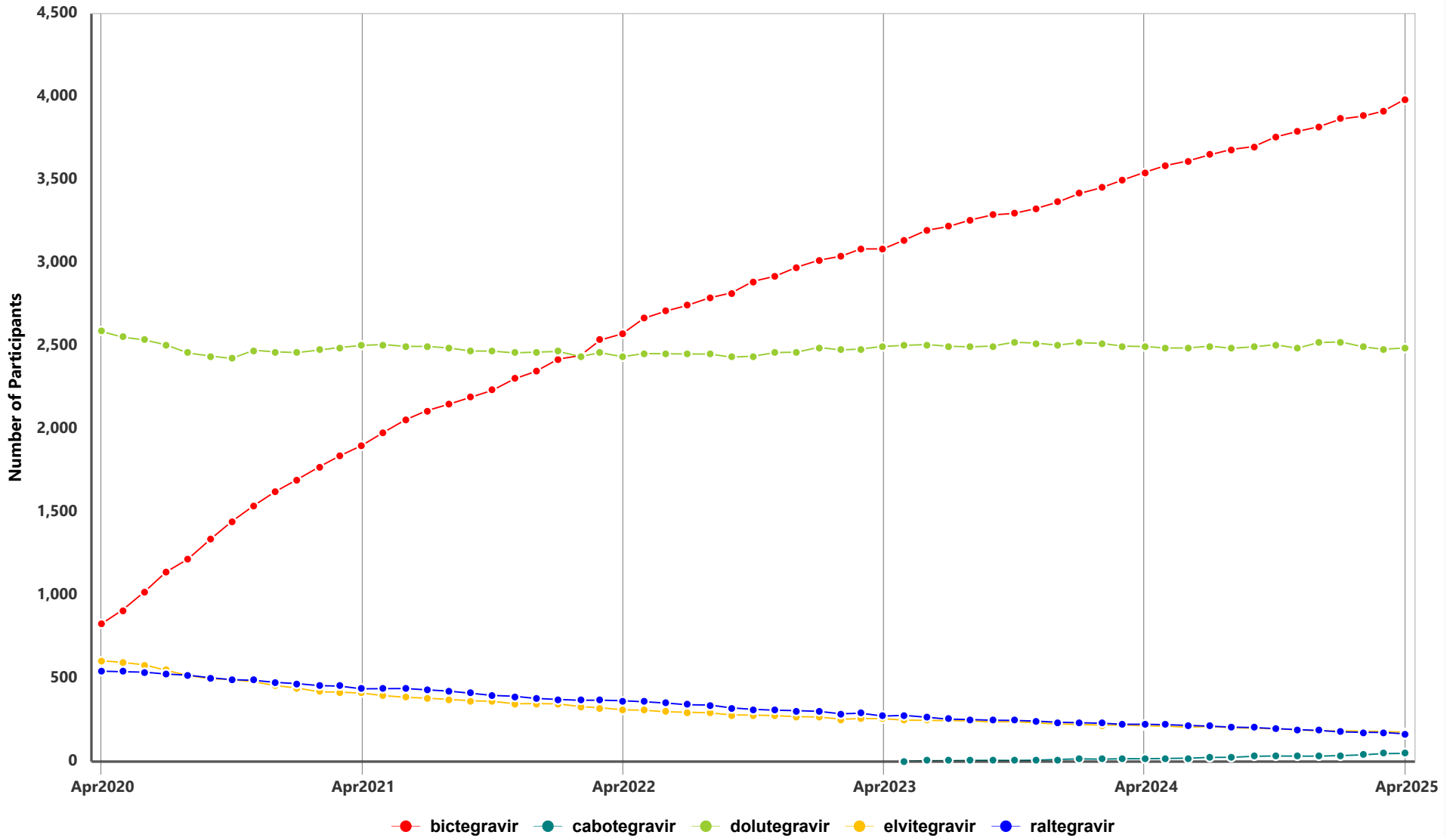


**1.9 Number of Participants on Non-Nucleoside Analogue Reverse Transcriptase Inhibitors by INGREDIENT**

MON-YYYY	Total Participants	doravirine n %	efavirenz n %	etravirine n %	nevirapine n %	rilpivirine n %
MAY-2023	977	223 22.8	232 23.8	98 10.0	239 24.5	187 19.1
JUN-2023	954	224 23.5	228 23.9	96 10.1	230 24.1	180 18.9
JUL-2023	953	235 24.7	222 23.3	94 9.9	225 23.6	178 18.7
AUG-2023	951	238 25.0	222 23.3	91 9.6	223 23.5	182 19.1
SEP-2023	938	236 25.2	218 23.2	88 9.4	220 23.5	177 18.9
OCT-2023	932	238 25.5	216 23.2	89 9.6	220 23.6	173 18.6
NOV-2023	928	242 26.1	209 22.5	88 9.5	219 23.6	173 18.6
DEC-2023	929	250 26.9	205 22.1	87 9.4	213 22.9	176 19.0
JAN-2024	921	250 27.1	200 21.7	83 9.0	208 22.6	181 19.7
FEB-2024	919	257 28.0	192 20.9	82 8.9	207 22.5	182 19.8
MAR-2024	914	260 28.5	190 20.8	80 8.8	205 22.4	181 19.8
APR-2024	915	261 28.5	190 20.8	82 9.0	203 22.2	180 19.7
MAY-2024	906	262 28.9	186 20.5	80 8.8	205 22.6	175 19.3
JUN-2024	893	262 29.3	182 20.4	79 8.9	198 22.2	172 19.3
JUL-2024	890	270 30.3	176 19.8	78 8.8	194 21.8	172 19.3
AUG-2024	879	272 30.9	174 19.8	78 8.9	187 21.3	171 19.5
SEP-2024	886	275 31.0	172 19.4	76 8.6	185 20.9	179 20.2
OCT-2024	871	283 32.5	168 19.3	72 8.3	177 20.3	175 20.1
NOV-2024	850	287 33.8	162 19.1	70 8.2	159 18.7	173 20.4
DEC-2024	844	303 35.9	156 18.5	71 8.4	149 17.7	167 19.8
JAN-2025	844	309 36.6	157 18.6	67 7.9	143 16.9	172 20.4
FEB-2025	834	306 36.7	156 18.7	64 7.7	136 16.3	173 20.7
MAR-2025	823	311 37.8	147 17.9	62 7.5	132 16.0	173 21.0
APR-2025	818	317 38.8	137 16.8	61 7.5	128 15.7	177 21.6

**n** is defined as number of participants on antiretroviral treatment which contains the INGREDIENT;  
**%** is calculated as ratio of "n" and number of participants whose treatment is of the given antiretroviral drug class

1.10 Distribution of Participants on Integrase Inhibitors by INGREDIENT  
April 2020 - April 2025





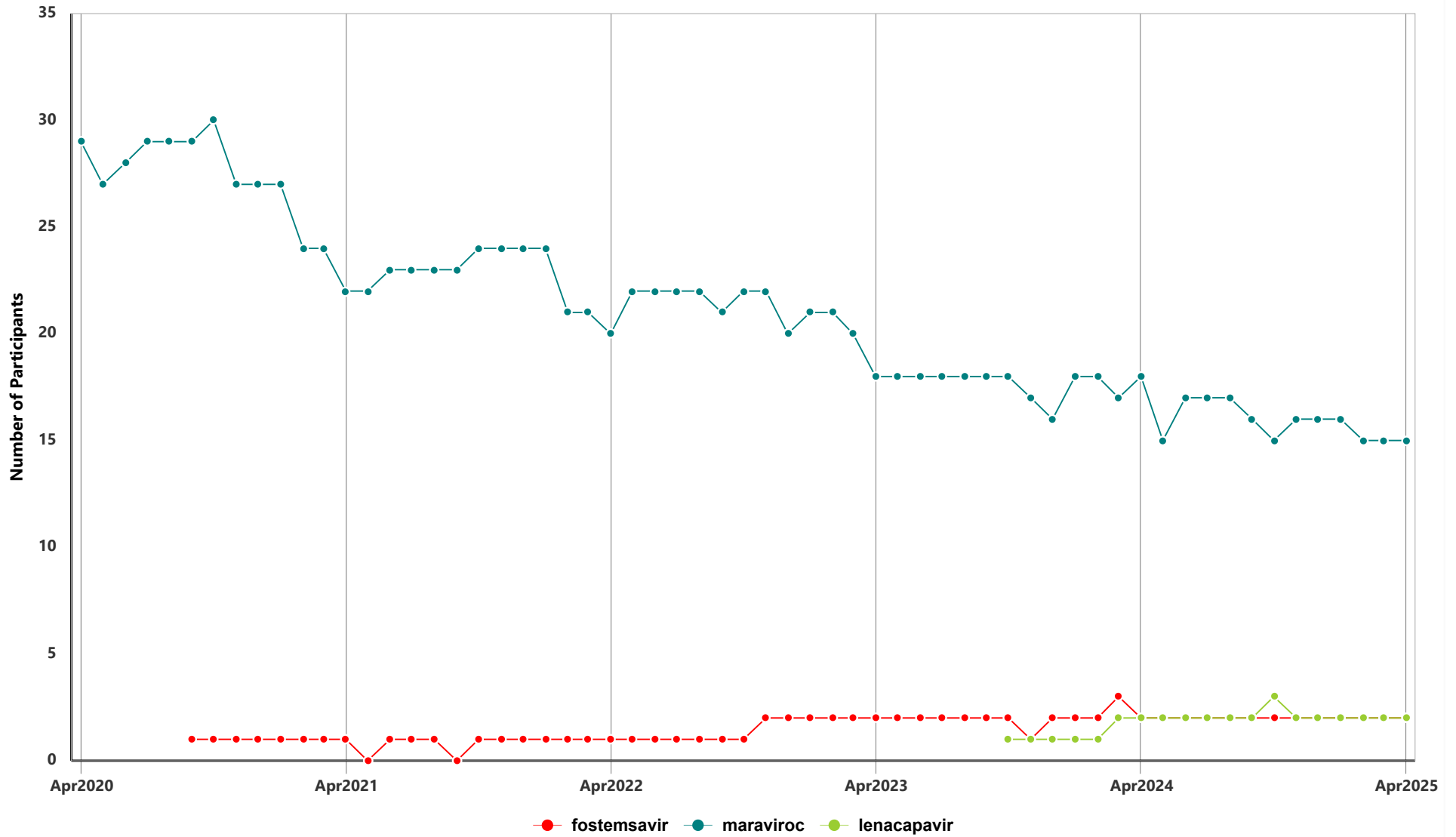
1.11 Number of Participants on Integrase Inhibitors by INGREDIENT

MON-YYYY	Total Participants	bictegravir n %	cabotegravir n %	dolutegravir n %	elvitegravir n %	raltegravir n %
MAY-2023	6151	3138 51.0	3 0.1	2504 40.7	250 4.1	278 4.5
JUN-2023	6204	3197 51.5	5 0.1	2509 40.4	248 4.0	267 4.3
JUL-2023	6201	3218 51.9	5 0.1	2499 40.3	247 4.0	256 4.1
AUG-2023	6240	3258 52.2	7 0.1	2495 40.0	245 3.9	253 4.1
SEP-2023	6263	3289 52.5	8 0.1	2500 39.9	238 3.8	249 4.0
OCT-2023	6294	3298 52.4	7 0.1	2523 40.1	241 3.8	248 3.9
NOV-2023	6311	3327 52.7	9 0.1	2518 39.9	233 3.7	244 3.9
DEC-2023	6330	3365 53.2	13 0.2	2506 39.6	226 3.6	237 3.7
JAN-2024	6389	3418 53.5	16 0.3	2520 39.4	224 3.5	234 3.7
FEB-2024	6417	3453 53.8	15 0.2	2516 39.2	219 3.4	231 3.6
MAR-2024	6435	3498 54.4	17 0.3	2500 38.9	220 3.4	225 3.5
APR-2024	6483	3545 54.7	17 0.3	2497 38.5	216 3.3	225 3.5
MAY-2024	6511	3586 55.1	19 0.3	2488 38.2	213 3.3	222 3.4
JUN-2024	6528	3614 55.4	21 0.3	2488 38.1	207 3.2	218 3.3
JUL-2024	6584	3650 55.4	25 0.4	2500 38.0	212 3.2	213 3.2
AUG-2024	6593	3683 55.9	26 0.4	2487 37.7	204 3.1	207 3.1
SEP-2024	6610	3700 56.0	32 0.5	2495 37.8	200 3.0	205 3.1
OCT-2024	6680	3757 56.2	34 0.5	2508 37.5	198 3.0	199 3.0
NOV-2024	6681	3791 56.7	33 0.5	2487 37.2	191 2.9	193 2.9
DEC-2024	6720	3819 56.8	33 0.5	2521 37.5	185 2.8	187 2.8
JAN-2025	6762	3866 57.2	36 0.5	2525 37.3	185 2.7	179 2.7
FEB-2025	6754	3883 57.5	41 0.6	2495 36.9	183 2.7	176 2.6
MAR-2025	6767	3913 57.8	48 0.7	2481 36.7	181 2.7	175 2.6
APR-2025	6834	3985 58.3	49 0.7	2488 36.4	176 2.6	167 2.4

n is defined as number of participants on antiretroviral treatment which contains the INGREDIENT;  
% is calculated as ratio of "n" and number of participants whose treatment is of the given antiretroviral drug class



1.12 Distribution of Participants on Other Antiretroviral Drug Classes by INGREDIENT  
April 2020 - April 2025





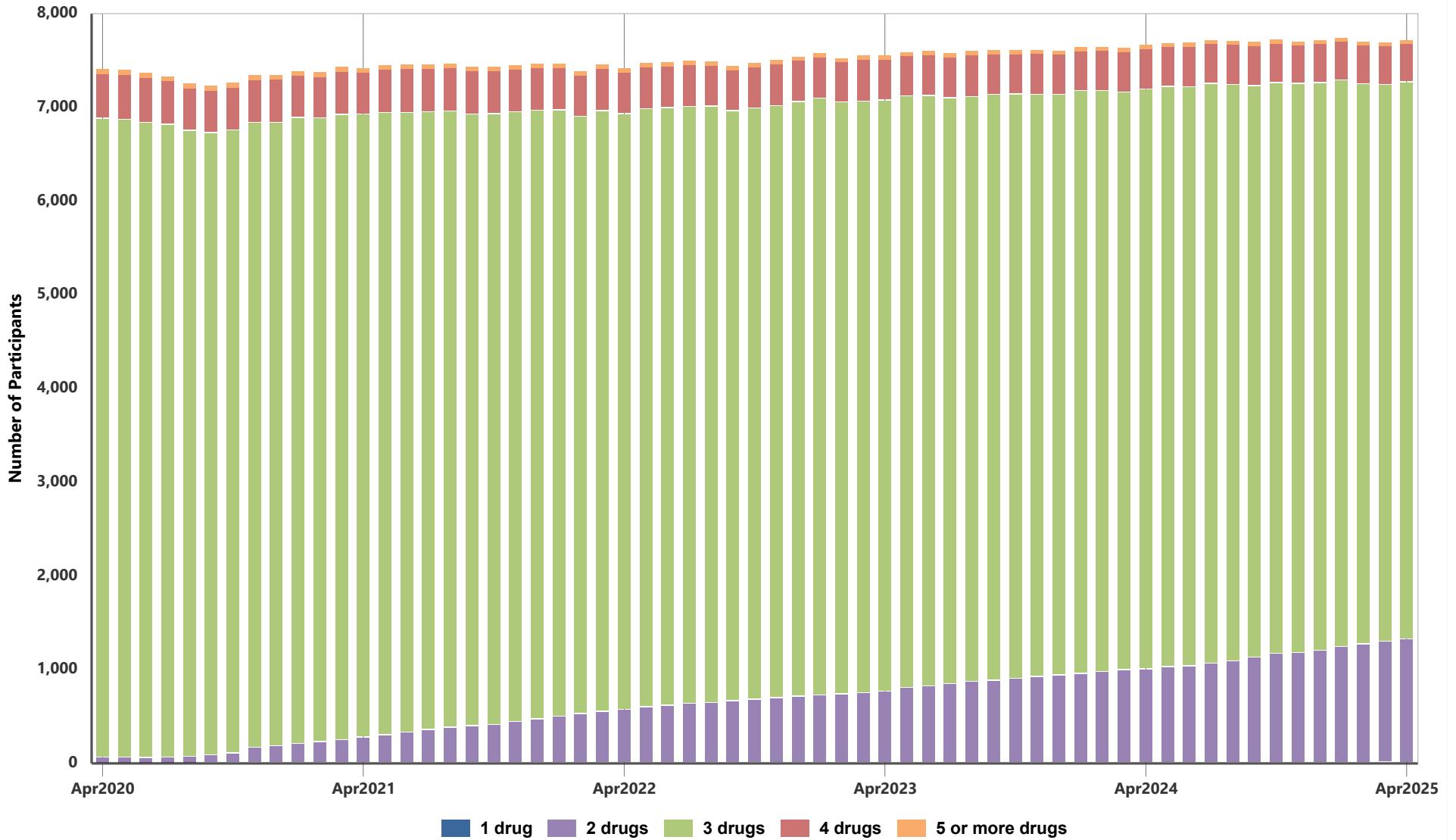
1.13 Number of Participants on Other Antiretroviral Drug Classes by INGREDIENT

MON-YYYY	Total Participants	fostemsavir		maraviroc		lenacapavir	
		n	%	n	%	n	%
MAY-2023	20	2	10.0	18	90.0	0	0.0
JUN-2023	20	2	10.0	18	90.0	0	0.0
JUL-2023	20	2	10.0	18	90.0	0	0.0
AUG-2023	20	2	10.0	18	90.0	0	0.0
SEP-2023	20	2	10.0	18	90.0	0	0.0
OCT-2023	20	2	10.0	18	90.0	1	5.0
NOV-2023	19	1	5.3	17	89.5	1	5.3
DEC-2023	19	2	10.5	16	84.2	1	5.3
JAN-2024	21	2	9.5	18	85.7	1	4.8
FEB-2024	21	2	9.5	18	85.7	1	4.8
MAR-2024	21	3	14.3	17	81.0	2	9.5
APR-2024	22	2	9.1	18	81.8	2	9.1
MAY-2024	19	2	10.5	15	79.0	2	10.5
JUN-2024	21	2	9.5	17	81.0	2	9.5
JUL-2024	21	2	9.5	17	81.0	2	9.5
AUG-2024	21	2	9.5	17	81.0	2	9.5
SEP-2024	20	2	10.0	16	80.0	2	10.0
OCT-2024	20	2	10.0	15	75.0	3	15.0
NOV-2024	20	2	10.0	16	80.0	2	10.0
DEC-2024	20	2	10.0	16	80.0	2	10.0
JAN-2025	20	2	10.0	16	80.0	2	10.0
FEB-2025	19	2	10.5	15	79.0	2	10.5
MAR-2025	19	2	10.5	15	79.0	2	10.5
APR-2025	19	2	10.5	15	79.0	2	10.5

n is defined as number of participants on antiretroviral treatment which contains the INGREDIENT;  
 % is calculated as ratio of "n" and number of participants whose treatment is of the given antiretroviral drug class  
 Both lenacapavir and fostemsavir are currently not on BC-CfE Formulary



1.14 Distribution of Participants on Antiretroviral Treatment by Number of Antiretrovirals  
April 2020 - April 2025



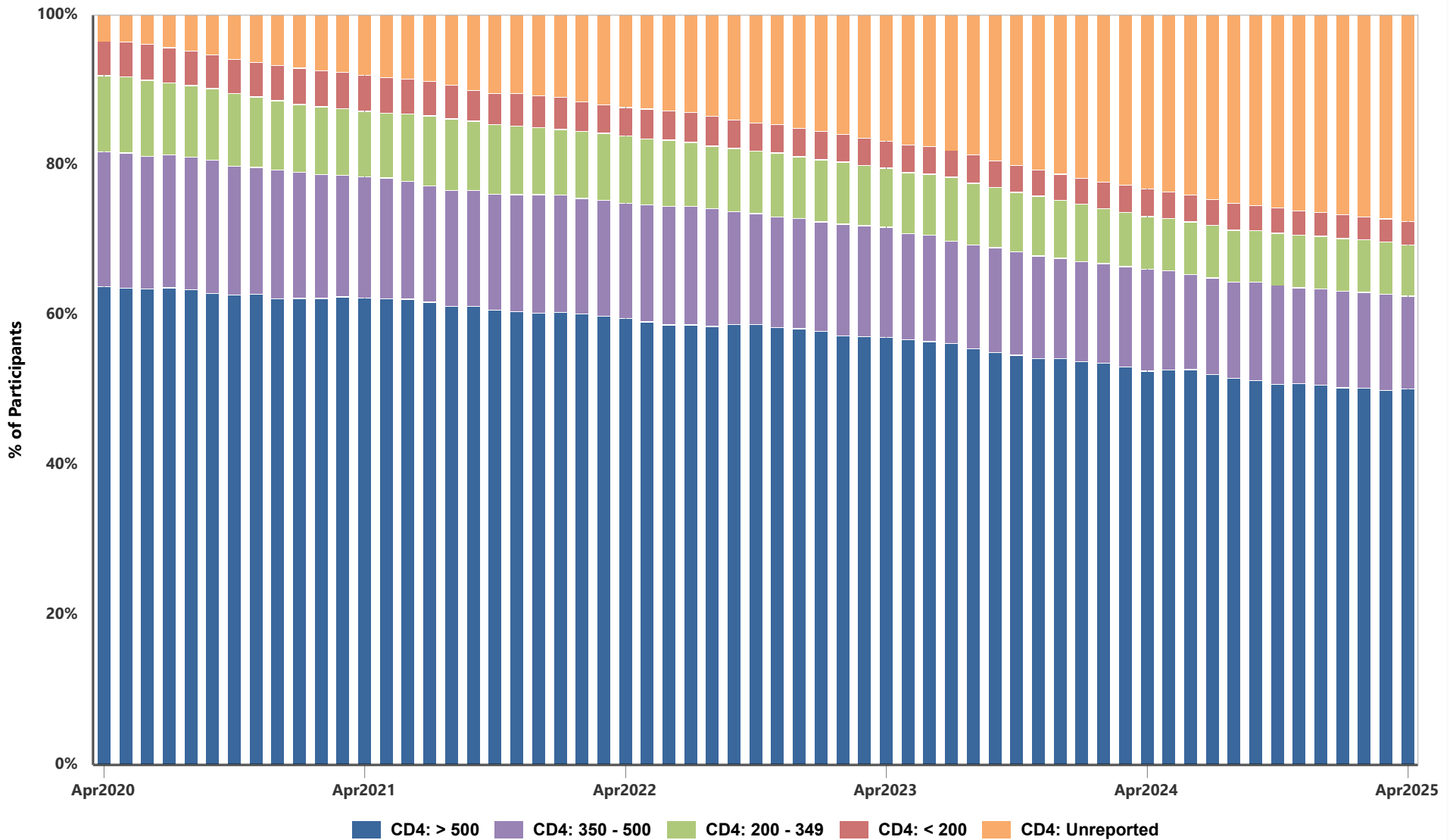
**1.15 Distribution of Participants on Antiretroviral Treatment by Number of Antiretrovirals**

MON-YYYY	Total Participants	1 drug		2 drugs		3 drugs		4 drugs		5 or more drugs	
		n	%	n	%	n	%	n	%	n	%
MAY-2023	7592	2	0.0	800	10.5	6314	83.2	435	5.7	41	0.5
JUN-2023	7599	2	0.0	819	10.8	6299	82.9	438	5.8	41	0.5
JUL-2023	7577	2	0.0	842	11.1	6253	82.5	440	5.8	40	0.5
AUG-2023	7600	2	0.0	864	11.4	6240	82.1	448	5.9	46	0.6
SEP-2023	7609	2	0.0	879	11.6	6250	82.1	432	5.7	46	0.6
OCT-2023	7610	2	0.0	897	11.8	6237	82.0	433	5.7	41	0.5
NOV-2023	7612	2	0.0	918	12.1	6210	81.6	441	5.8	41	0.5
DEC-2023	7603	2	0.0	936	12.3	6191	81.4	434	5.7	40	0.5
JAN-2024	7642	2	0.0	952	12.5	6214	81.3	432	5.7	42	0.6
FEB-2024	7647	3	0.0	971	12.7	6198	81.1	436	5.7	39	0.5
MAR-2024	7636	2	0.0	991	13.0	6159	80.7	440	5.8	44	0.6
APR-2024	7670	2	0.0	1001	13.1	6184	80.6	437	5.7	46	0.6
MAY-2024	7687	2	0.0	1024	13.3	6188	80.5	434	5.7	39	0.5
JUN-2024	7687	1	0.0	1034	13.5	6181	80.4	429	5.6	42	0.6
JUL-2024	7718	2	0.0	1061	13.8	6184	80.1	434	5.6	37	0.5
AUG-2024	7709	2	0.0	1082	14.0	6155	79.8	431	5.6	39	0.5
SEP-2024	7697	2	0.0	1125	14.6	6101	79.3	426	5.5	43	0.6
OCT-2024	7725	1	0.0	1169	15.1	6087	78.8	427	5.5	41	0.5
NOV-2024	7703	1	0.0	1177	15.3	6069	78.8	417	5.4	39	0.5
DEC-2024	7720	2	0.0	1200	15.5	6054	78.4	424	5.5	40	0.5
JAN-2025	7739	2	0.0	1235	16.0	6047	78.1	416	5.4	39	0.5
FEB-2025	7696	2	0.0	1265	16.4	5977	77.7	414	5.4	38	0.5
MAR-2025	7689	4	0.1	1292	16.8	5942	77.3	414	5.4	37	0.5
APR-2025	7719	3	0.0	1321	17.1	5939	76.9	419	5.4	37	0.5

n is the number of individual drugs in antiretroviral treatment regimen (excluding low dose ritonavir and cobicistat used for pharmacokinetic boosting)



1.16 Percent Distribution of Active Participants by CD4 Count  
April 2020 - April 2025





1.17 Distribution of Active Participants by CD4 Count

Month	# of Pts with CD4: Unreported	# of Pts with CD4: < 200	# of Pts with CD4: 200 - 349	# of Pts with CD4: 350 - 500	# of Pts with CD4: > 500
MAY-2023	1180	251	549	961	3837
JUN-2023	1199	247	554	963	3827
JUL-2023	1233	239	578	927	3805
AUG-2023	1277	254	560	943	3767
SEP-2023	1330	243	547	951	3744
OCT-2023	1380	242	543	943	3727
NOV-2023	1416	237	542	937	3689
DEC-2023	1459	237	530	917	3703
JAN-2024	1496	238	529	916	3679
FEB-2024	1535	242	503	911	3673
MAR-2024	1567	255	498	924	3649
APR-2024	1612	253	486	944	3627
MAY-2024	1647	248	486	923	3661
JUN-2024	1686	247	493	886	3679
JUL-2024	1748	248	493	912	3681
AUG-2024	1793	251	491	910	3659
SEP-2024	1812	241	489	935	3638
OCT-2024	1847	243	499	948	3624
NOV-2024	1882	234	505	917	3652
DEC-2024	1911	232	508	928	3658
JAN-2025	1940	233	509	939	3650
FEB-2025	1959	223	511	930	3640
MAR-2025	1981	225	508	934	3620
APR-2025	2022	230	500	903	3666

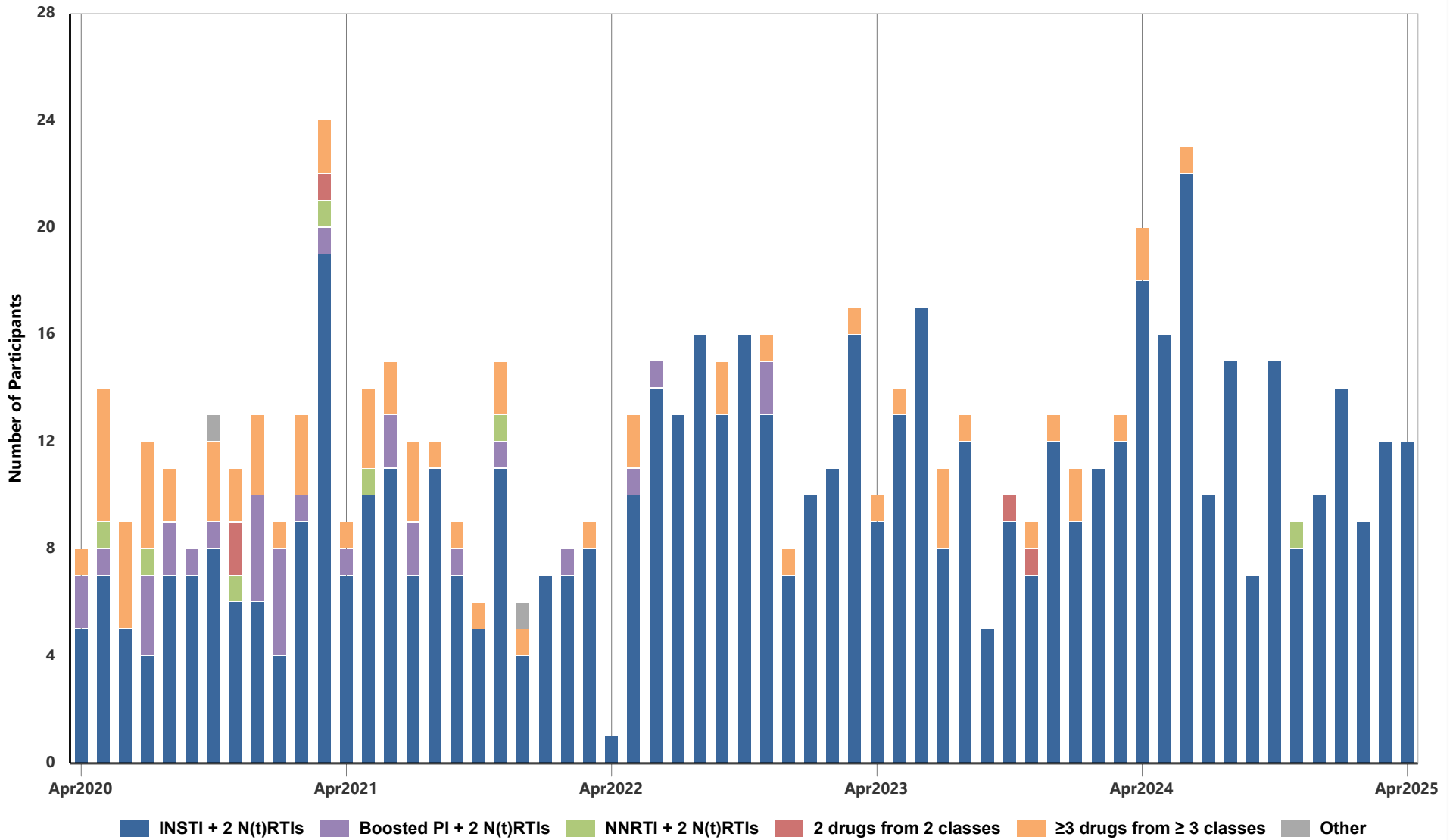
CD4 value (cells/ $\mu$ L) as per the most recent test within the past 12 months

CD4 Unreported: CD4 not tested or reported within the past 12 months

Active Participants are participants with antiretroviral treatment in the month based on dispensing record



1.18 Initial Regimen Composition for Antiretroviral Treatment Naïve Participants Starting Treatment  
April 2020 - April 2025



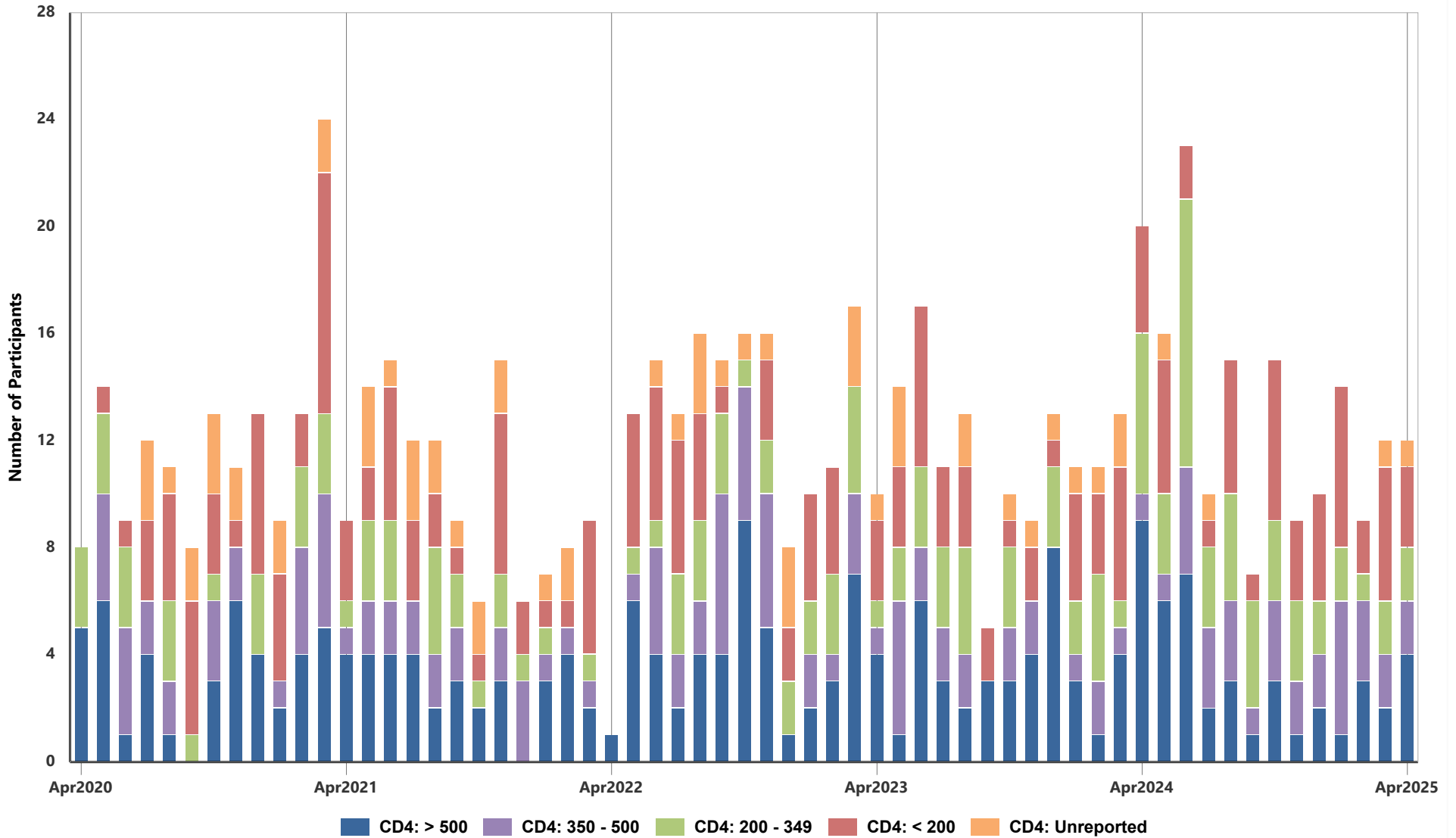
**1.19 Initial Regimen Composition for Antiretroviral Treatment Naïve Participants Starting Treatment**

MON-YYYY	Total	INSTI 2 N(t)RTIs		Boosted PI 2 N(t)RTIs		NNRTI 2 N(t)RTIs		2 drugs from 2 classes		≥3 drugs from ≥3 classes		Other	
		n	%	n	%	n	%	n	%	n	%	n	%
MAY-2023	14	13	92.9	0	0.0	0	0.0	0	0.0	1	7.1	0	0.0
JUN-2023	17	17	100.0	0	0.0	0	0.0	0	0.0	0	0.0	0	0.0
JUL-2023	11	8	72.7	0	0.0	0	0.0	0	0.0	3	27.3	0	0.0
AUG-2023	13	12	92.3	0	0.0	0	0.0	0	0.0	1	7.7	0	0.0
SEP-2023	5	5	100.0	0	0.0	0	0.0	0	0.0	0	0.0	0	0.0
OCT-2023	10	9	90.0	0	0.0	0	0.0	1	10.0	0	0.0	0	0.0
NOV-2023	9	7	77.8	0	0.0	0	0.0	1	11.1	1	11.1	0	0.0
DEC-2023	13	12	92.3	0	0.0	0	0.0	0	0.0	1	7.7	0	0.0
JAN-2024	11	9	81.8	0	0.0	0	0.0	0	0.0	2	18.2	0	0.0
FEB-2024	11	11	100.0	0	0.0	0	0.0	0	0.0	0	0.0	0	0.0
MAR-2024	13	12	92.3	0	0.0	0	0.0	0	0.0	1	7.7	0	0.0
APR-2024	20	18	90.0	0	0.0	0	0.0	0	0.0	2	10.0	0	0.0
MAY-2024	16	16	100.0	0	0.0	0	0.0	0	0.0	0	0.0	0	0.0
JUN-2024	23	22	95.7	0	0.0	0	0.0	0	0.0	1	4.3	0	0.0
JUL-2024	10	10	100.0	0	0.0	0	0.0	0	0.0	0	0.0	0	0.0
AUG-2024	15	15	100.0	0	0.0	0	0.0	0	0.0	0	0.0	0	0.0
SEP-2024	7	7	100.0	0	0.0	0	0.0	0	0.0	0	0.0	0	0.0
OCT-2024	15	15	100.0	0	0.0	0	0.0	0	0.0	0	0.0	0	0.0
NOV-2024	9	8	88.9	0	0.0	1	11.1	0	0.0	0	0.0	0	0.0
DEC-2024	10	10	100.0	0	0.0	0	0.0	0	0.0	0	0.0	0	0.0
JAN-2025	14	14	100.0	0	0.0	0	0.0	0	0.0	0	0.0	0	0.0
FEB-2025	9	9	100.0	0	0.0	0	0.0	0	0.0	0	0.0	0	0.0
MAR-2025	12	12	100.0	0	0.0	0	0.0	0	0.0	0	0.0	0	0.0
APR-2025	12	12	100.0	0	0.0	0	0.0	0	0.0	0	0.0	0	0.0

**INSTI:** Integrase Inhibitor, **PI:** Protease Inhibitor, **NNRTI:** Non-Nucleoside Analogue Reverse Transcriptase Inhibitor, **N(t)RTI:** Nucleos(t)ide Analogue Reverse Transcriptase Inhibitor  
**n** is number of participants on the specified regimen category in the specified month  
**%** is ratio of n and total number of participants initiating antiretroviral treatment in the specified month



1.20 Pre-entry CD4 for Antiretroviral Treatment Naïve Participants in the HIV Treatment Program  
April 2020 - April 2025



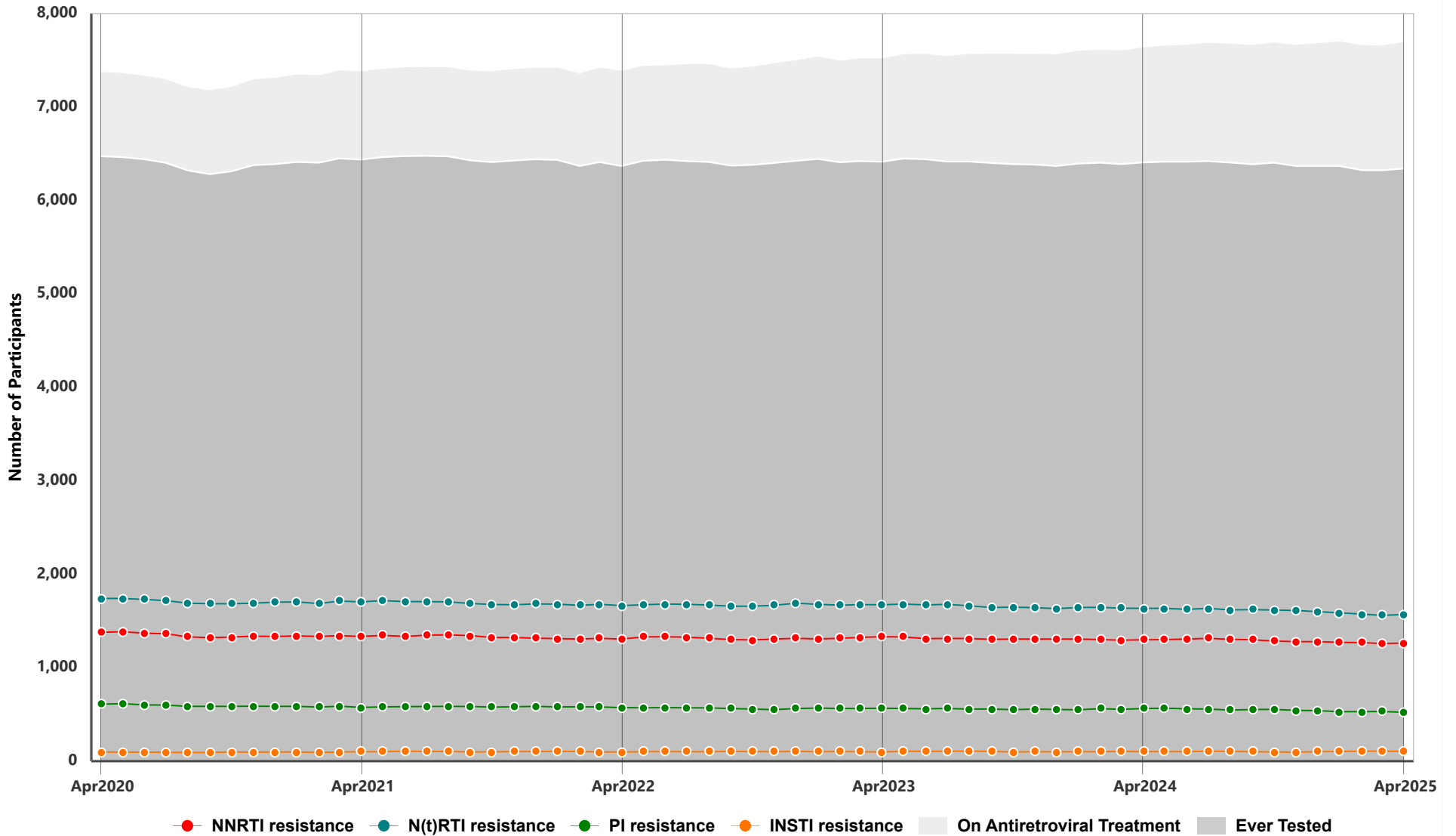
**1.21 Pre-entry CD4 for Antiretroviral Treatment Naive Participants in the HIV Treatment Program**

MON-YYYY	# of First Starts	# of Pts with CD4: Unreported		# of Pts with CD4: < 200		# of Pts with CD4: 200 - 349		# of Pts with CD4: 350 - 500		# of Pts with CD4: > 500	
		n	%	n	%	n	%	n	%	n	%
MAY-2023	14	3	21.4	3	21.4	2	14.3	5	35.7	1	7.1
JUN-2023	17	0	0.0	6	35.3	3	17.7	2	11.8	6	35.3
JUL-2023	11	0	0.0	3	27.3	3	27.3	2	18.2	3	27.3
AUG-2023	13	2	15.4	3	23.1	4	30.8	2	15.4	2	15.4
SEP-2023	5	0	0.0	2	40.0	0	0.0	0	0.0	3	60.0
OCT-2023	10	1	10.0	1	10.0	3	30.0	2	20.0	3	30.0
NOV-2023	9	1	11.1	2	22.2	0	0.0	2	22.2	4	44.4
DEC-2023	13	1	7.7	1	7.7	3	23.1	0	0.0	8	61.5
JAN-2024	11	1	9.1	4	36.4	2	18.2	1	9.1	3	27.3
FEB-2024	11	1	9.1	3	27.3	4	36.4	2	18.2	1	9.1
MAR-2024	13	2	15.4	5	38.5	1	7.7	1	7.7	4	30.8
APR-2024	20	0	0.0	4	20.0	6	30.0	1	5.0	9	45.0
MAY-2024	16	1	6.3	5	31.3	3	18.8	1	6.3	6	37.5
JUN-2024	23	0	0.0	2	8.7	10	43.5	4	17.4	7	30.4
JUL-2024	10	1	10.0	1	10.0	3	30.0	3	30.0	2	20.0
AUG-2024	15	0	0.0	5	33.3	4	26.7	3	20.0	3	20.0
SEP-2024	7	0	0.0	1	14.3	4	57.1	1	14.3	1	14.3
OCT-2024	15	0	0.0	6	40.0	3	20.0	3	20.0	3	20.0
NOV-2024	9	0	0.0	3	33.3	3	33.3	2	22.2	1	11.1
DEC-2024	10	0	0.0	4	40.0	2	20.0	2	20.0	2	20.0
JAN-2025	14	0	0.0	6	42.9	2	14.3	5	35.7	1	7.1
FEB-2025	9	0	0.0	2	22.2	1	11.1	3	33.3	3	33.3
MAR-2025	12	1	8.3	5	41.7	2	16.7	2	16.7	2	16.7
APR-2025	12	1	8.3	3	25.0	2	16.7	2	16.7	4	33.3

**First Starts** defined as participants starting antiretroviral treatment in the specified month for the first time (antiretroviral treatment naive)  
**Pre-entry CD4** (cells/ $\mu$ L) is defined as most recent CD4 test before antiretroviral treatment start



1.22 Antiretroviral Resistance by Drug Class Among Participants on Antiretroviral Treatment  
April 2020 - April 2025



**1.23 Antiretroviral Resistance by Drug Class Among Participants on Antiretroviral Treatment**

MON-YYYY	On Antiretroviral (ARV) Treatment	Ever Tested	NNRTI		N(t)RTI		PI		INSTI	
			n	%	n	%	n	%	n	%
MAY-2023	7574	6449	1329	20.6	1681	26.1	563	8.7	106	1.6
JUN-2023	7577	6441	1312	20.4	1672	26.0	561	8.7	106	1.7
JUL-2023	7555	6417	1313	20.5	1678	26.2	563	8.8	106	1.7
AUG-2023	7577	6417	1313	20.5	1663	25.9	557	8.7	107	1.7
SEP-2023	7579	6402	1304	20.4	1644	25.7	557	8.7	104	1.6
OCT-2023	7579	6390	1307	20.5	1647	25.8	552	8.6	99	1.6
NOV-2023	7578	6384	1307	20.5	1643	25.7	558	8.7	101	1.6
DEC-2023	7574	6370	1306	20.5	1633	25.6	553	8.7	100	1.6
JAN-2024	7613	6395	1306	20.4	1644	25.7	549	8.6	102	1.6
FEB-2024	7620	6405	1301	20.3	1646	25.7	562	8.8	102	1.6
MAR-2024	7616	6389	1294	20.3	1637	25.6	555	8.7	105	1.6
APR-2024	7647	6407	1299	20.3	1636	25.5	563	8.8	102	1.6
MAY-2024	7666	6415	1301	20.3	1636	25.5	566	8.8	103	1.6
JUN-2024	7678	6415	1306	20.4	1625	25.3	560	8.7	101	1.6
JUL-2024	7697	6421	1315	20.5	1635	25.5	557	8.7	107	1.7
AUG-2024	7686	6406	1304	20.4	1619	25.3	547	8.5	105	1.6
SEP-2024	7674	6387	1299	20.3	1621	25.4	553	8.7	102	1.6
OCT-2024	7702	6404	1285	20.1	1617	25.3	555	8.7	99	1.6
NOV-2024	7674	6370	1279	20.1	1613	25.3	544	8.5	97	1.5
DEC-2024	7693	6369	1279	20.1	1600	25.1	541	8.5	101	1.6
JAN-2025	7712	6370	1272	20.0	1587	24.9	529	8.3	105	1.7
FEB-2025	7673	6324	1268	20.1	1574	24.9	530	8.4	106	1.7
MAR-2025	7668	6323	1259	19.9	1560	24.7	531	8.4	108	1.7
APR-2025	7703	6342	1263	19.9	1569	24.7	524	8.3	104	1.6

**On Antiretroviral (ARV) Treatment:** based on dispensing data, participants with a record of ARV medication in the specified month and not deceased or moved out of program.

**Ever Tested:** those on ARV treatment, with at least one ARV resistance test on record in BC, up until the month of interest.

**n:** number of participants on ARV treatment who were ever tested for ARV resistance with drug resistance to  $\geq 1$  drug in the corresponding drug class in BC. Participants may have resistance to none or 1 or more drug class(es).

**%** is calculated as ratio of "n" and number of participants on ARV treatment who were ever tested for ARV resistance with drug resistance to  $\geq 1$  drug the corresponding drug class in BC.

Resistance interpretations are performed using the Stanford University HIV Drug Resistance Database Algorithm (HIVdb) version 9.8.

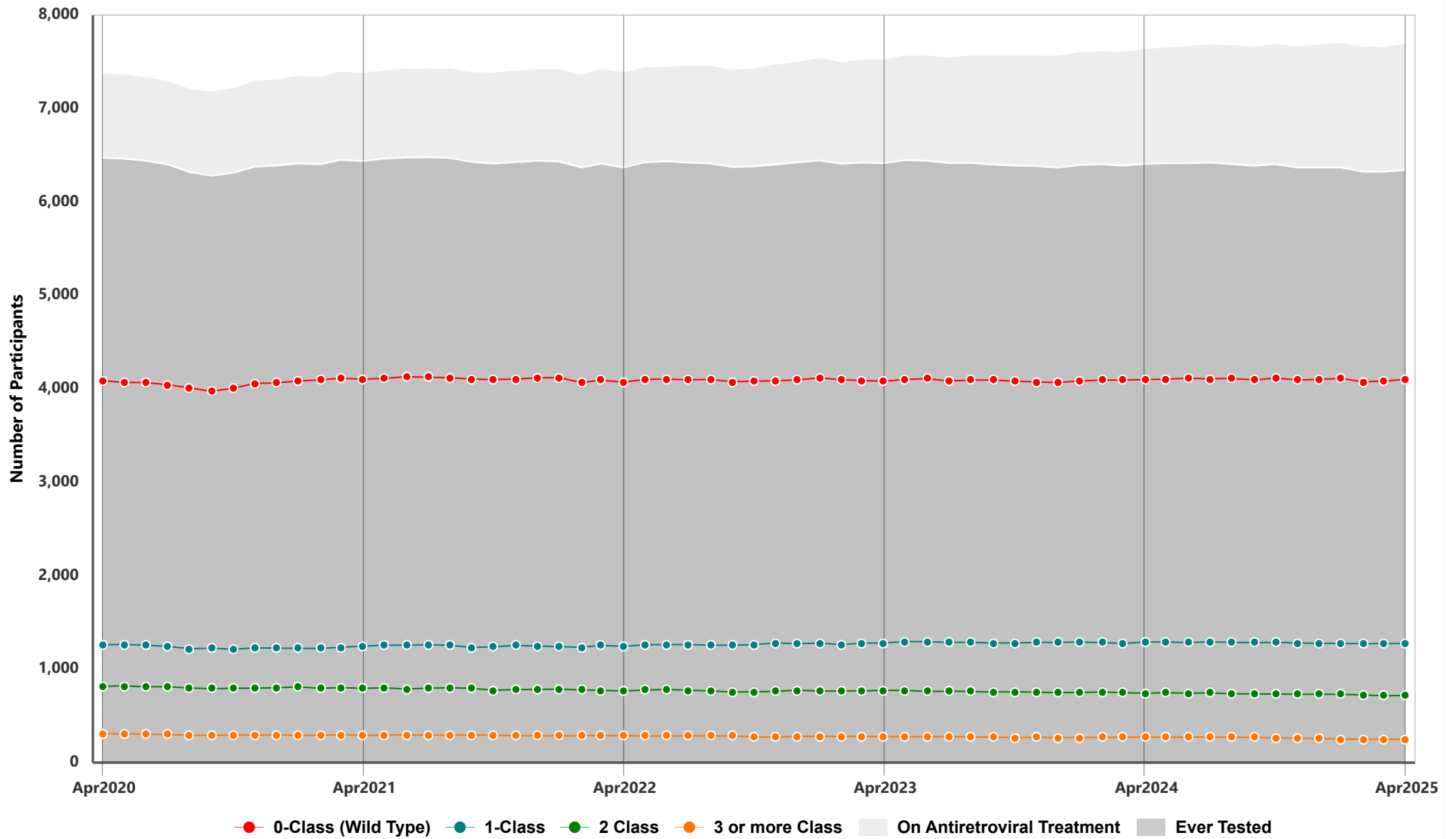
HIVdb scores  $\geq 15$  are classified as "resistant".

**INSTI:** Integrase Inhibitor, **PI:** Protease Inhibitor, **NNRTI:** Non-Nucleoside Analogue Reverse Transcriptase Inhibitor,

**N(t)RTI:** Nucleos(t)ide Analogue Reverse Transcriptase Inhibitor



1.24 Active Participants by number of Antiretroviral Drug Classes with Resistance  
April 2020 - April 2025



**1.25 Active Participants by number of Antiretroviral Drug Classes with Resistance**

MON-YYYY	On Antiretroviral Treatment	Ever Tested	0-Class (Wild Type)		1-Class		2-Class		3 or more Class	
			n	%	n	%	n	%	n	%
MAY-2023	7574	6449	4102	63.6	1296	20.1	774	12.0	277	4.3
JUN-2023	7577	6441	4109	63.8	1294	20.1	761	11.8	277	4.3
JUL-2023	7555	6417	4084	63.6	1289	20.1	765	11.9	279	4.4
AUG-2023	7577	6417	4094	63.8	1286	20.0	761	11.9	276	4.3
SEP-2023	7579	6402	4095	64.0	1280	20.0	755	11.8	272	4.3
OCT-2023	7579	6390	4083	63.9	1281	20.1	758	11.9	268	4.2
NOV-2023	7578	6384	4073	63.8	1287	20.2	754	11.8	270	4.2
DEC-2023	7574	6370	4067	63.9	1286	20.2	749	11.8	268	4.2
JAN-2024	7613	6395	4084	63.9	1292	20.2	751	11.7	268	4.2
FEB-2024	7620	6405	4095	63.9	1284	20.1	755	11.8	271	4.2
MAR-2024	7616	6389	4093	64.1	1276	20.0	749	11.7	271	4.2
APR-2024	7647	6407	4100	64.0	1291	20.2	743	11.6	273	4.3
MAY-2024	7666	6415	4104	64.0	1291	20.1	749	11.7	271	4.2
JUN-2024	7678	6415	4114	64.1	1285	20.0	743	11.6	273	4.3
JUL-2024	7697	6421	4107	64.0	1293	20.1	746	11.6	275	4.3
AUG-2024	7686	6406	4112	64.2	1287	20.1	737	11.5	270	4.2
SEP-2024	7674	6387	4095	64.1	1285	20.1	735	11.5	272	4.3
OCT-2024	7702	6404	4117	64.3	1287	20.1	734	11.5	266	4.2
NOV-2024	7674	6370	4095	64.3	1281	20.1	732	11.5	262	4.1
DEC-2024	7693	6369	4101	64.4	1276	20.0	733	11.5	259	4.1
JAN-2025	7712	6370	4112	64.6	1276	20.0	731	11.5	251	3.9
FEB-2025	7673	6324	4075	64.4	1273	20.1	724	11.5	252	4.0
MAR-2025	7668	6323	4083	64.6	1275	20.2	715	11.3	250	4.0
APR-2025	7703	6342	4101	64.7	1274	20.1	718	11.3	249	3.9

**Number of Antiretroviral (ARV) Drug Classes with Resistance** considers N(t)RTIs, NNRTIs, PIs, and INSTIs only, based on cumulative resistance tests performed in BC (until the specified month) for participants ever tested (see definition below).

Resistance interpretations are performed using the Stanford University HIV Drug Resistance Database Algorithm (HIVdb) version 9.8.

HIVdb scores  $\geq 15$  are classified as "resistant".

**On Antiretroviral Treatment:** based on dispensing data, participants with a record of ARV medication in the specified month and not deceased or moved out of program.

**Ever tested:** those on ARV treatment, with at least one ARV resistance test on record in BC, up until the specified month.





2.1 Active participants by Year of Program Initiation (1987 - 2025) - as of April 2025

DTP Start Year	Duration (years) Median	First Starts	All	Male	Female	Age		(n)	CD4 (cells/ $\mu$ L)		(n)	pVL (copies/mL)	
						Median	(Q1, Q3)		Median	(Q1, Q3)		Median	(Q1, Q3)
Pre-1993	31	48	185	176	9	34	(30, 39)	95	570	(395, 740)	168	<40	(<40, <40)
1993	30	118	119	107	12	34	(29, 40)	71	610	(420, 820)	112	<40	(<40, <40)
1994	28	71	71	60	11	34	(30, 37)	45	660	(410, 850)	63	<40	(<40, <40)
1995	28	126	127	109	18	34	(29, 39)	77	620	(410, 740)	114	<40	(<40, <40)
1996	26	321	323	280	43	35	(30, 39)	186	610	(433, 840)	286	<40	(<40, <40)
1997	24	262	268	243	25	34	(30, 38)	163	600	(380, 845)	233	<40	(<40, <40)
1998	23	187	196	164	32	34	(31, 40)	129	580	(420, 810)	176	<40	(<40, <40)
1999	23	165	166	131	35	36	(30, 42)	115	590	(380, 840)	154	<40	(<40, <40)
2000	24	124	127	103	24	38	(33, 44)	82	600	(363, 750)	112	<40	(<40, <40)
2001	23	118	121	97	24	37	(31, 44)	74	660	(385, 835)	111	<40	(<40, <40)
2002	22	120	130	111	19	40	(30, 46)	81	530	(410, 770)	115	<40	(<40, <40)
2003	21	142	153	129	24	39	(34, 45)	99	600	(419, 805)	135	<40	(<40, <40)
2004	20	145	167	131	36	39	(34, 44)	112	615	(428, 833)	149	<40	(<40, <40)
2005	19	180	197	161	36	40	(35, 47)	136	620	(430, 849)	182	<40	(<40, <40)
2006	18	179	198	159	39	41	(32, 48)	139	630	(452, 800)	173	<40	(<40, <40)
2007	18	234	252	217	35	41	(35, 46)	175	680	(470, 880)	226	<40	(<40, <40)
2008	16	276	309	252	57	42	(34, 49)	220	675	(500, 933)	267	<40	(<40, <40)
2009	16	296	325	266	59	41	(35, 48)	216	664	(480, 901)	298	<40	(<40, <40)
2010	14	261	300	240	60	40	(32, 45)	213	660	(480, 860)	260	<40	(<40, <40)
2011	14	316	362	299	63	41	(33, 48)	234	710	(490, 900)	312	<40	(<40, <40)
2012	13	274	311	252	59	40	(32, 49)	189	760	(560, 1010)	278	<40	(<40, <40)
2013	12	253	298	242	56	40	(32, 48)	199	700	(465, 890)	254	<40	(<40, <40)
2014	11	230	302	258	44	40	(31, 50)	193	750	(540, 980)	262	<40	(<40, <40)
2015	10	195	282	239	43	41	(31, 51)	194	700	(500, 908)	246	<40	(<40, <40)
2016	9	180	256	210	46	38	(32, 49)	169	680	(489, 900)	222	<40	(<40, <40)
2017	8	160	229	198	31	36	(28, 45)	160	680	(509, 860)	211	<40	(<40, <40)
2018	7	136	206	163	43	39	(31, 48)	144	790	(560, 993)	179	<40	(<40, <40)
2019	6	134	250	210	40	38	(29, 48)	189	720	(480, 940)	230	<40	(<40, <40)
2020	5	105	203	152	51	37	(31, 49)	148	765	(560, 963)	167	<40	(<40, <40)

Duration defined as cumulative years on antiretroviral treatment, excluding periods of treatment interruption  
 CD4 and pVL tests defined as most recent test done in the last 12 months and last 6 months, respectively





2.1 Active participants by Year of Program Initiation (1987 - 2025) - as of April 2025 (cont.)

DTP Start Year	Duration (years) Median	First Starts	All	Male	Female	Age		(n)	CD4 (cells/ $\mu$ L)		(n)	pVL (copies/mL)	
						Median	(Q1, Q3)		Median	(Q1, Q3)		Median	(Q1, Q3)
2021	4	111	203	172	31	38	(30, 46)	181	675	(488, 920)	144	<40	(<40, <40)
2022	3	110	271	221	50	38	(31, 46)	241	700	(520, 925)	207	<40	(<40, <40)
2023	2	114	313	257	56	35	(30, 45)	294	635	(450, 820)	240	<40	(<40, <40)
2024	1	137	360	288	72	36	(29, 45)	341	610	(430, 830)	318	<40	(<40, <40)
2025	0	47	123	89	34	36	(30, 44)	118	586	(341, 780)	114	<40	(<40, 122)
<b>Total:</b>		<b>5875</b>	<b>7703</b>	<b>6386</b>	<b>1317</b>								

**Duration** defined as cumulative years on antiretroviral treatment, excluding periods of treatment interruption  
**CD4 and pVL tests** defined as most recent test done in the last 12 months and last 6 months, respectively



**2.2 HIV Viral Load (copies/mL) and CD4 (cells/ $\mu$ L) for Participants on Antiretroviral Treatment**

MON-YYYY	Total Participants	Median # of Treatment days	(n)	CD4 (cells/ $\mu$ L)		(n)	pVL (copies/mL)	
				Median	(Q1, Q3)		Median	(Q1, Q3)
MAY-2023	7592	786	5598	640	(451, 860)	6873	<40	(<40, <40)
JUN-2023	7599	787	5591	640	(450, 860)	6918	<40	(<40, <40)
JUL-2023	7577	805	5549	650	(450, 860)	6937	<40	(<40, <40)
AUG-2023	7600	804	5524	641	(450, 860)	6890	<40	(<40, <40)
SEP-2023	7609	796	5485	650	(450, 860)	6893	<40	(<40, <40)
OCT-2023	7610	803	5455	640	(450, 860)	6812	<40	(<40, <40)
NOV-2023	7612	795	5405	640	(450, 860)	6840	<40	(<40, <40)
DEC-2023	7603	798	5387	650	(460, 860)	6828	<40	(<40, <40)
JAN-2024	7642	792	5362	640	(460, 860)	6814	<40	(<40, <40)
FEB-2024	7647	781	5329	650	(460, 870)	6864	<40	(<40, <40)
MAR-2024	7636	790	5326	640	(450, 870)	6871	<40	(<40, <40)
APR-2024	7670	786	5310	640	(450, 870)	6842	<40	(<40, <40)
MAY-2024	7687	787	5318	650	(460, 880)	6896	<40	(<40, <40)
JUN-2024	7687	784	5305	650	(460, 870)	6921	<40	(<40, <40)
JUL-2024	7718	786	5334	650	(460, 870)	7009	<40	(<40, <40)
AUG-2024	7709	782	5311	650	(460, 870)	6937	<40	(<40, <40)
SEP-2024	7697	791	5303	650	(460, 870)	6904	<40	(<40, <40)
OCT-2024	7725	787	5314	650	(460, 870)	6898	<40	(<40, <40)
NOV-2024	7703	793	5308	650	(460, 880)	6875	<40	(<40, <40)
DEC-2024	7720	796	5326	650	(460, 880)	6913	<40	(<40, <40)
JAN-2025	7739	792	5331	650	(450, 880)	6882	<40	(<40, <40)
FEB-2025	7696	800	5304	650	(460, 880)	6870	<40	(<40, <40)
MAR-2025	7689	792	5287	650	(450, 875)	6812	<40	(<40, <40)
APR-2025	7719	779	5299	660	(460, 880)	6890	<40	(<40, <40)

**Active participant** defined as being on antiretroviral treatment in the specified month

**Treatment days** defined as number of consecutive days on antiretroviral treatment (most recent uninterrupted period)

**CD4 and pVL tests** defined as tests done in the specified month



**2.3 BC-CfE HIV Treatment Program Enrolment**

MON-YYYY	On ARV Treatment	Off ARV Treatment	Deceased	ARV Treatment naïve starts	ARV Treatment experienced starts	Newly interrupted ARV Treatment	Net Change
MAY-2023	7574	714	7	14	206	165	43
JUN-2023	7577	697	14	17	168	165	3
JUL-2023	7555	728	11	11	164	181	-22
AUG-2023	7577	727	11	13	217	192	22
SEP-2023	7579	714	14	5	179	163	2
OCT-2023	7579	724	18	10	170	160	0
NOV-2023	7578	731	18	9	182	171	-1
DEC-2023	7574	740	14	13	169	169	-4
JAN-2024	7613	698	16	11	204	159	39
FEB-2024	7620	695	17	11	184	165	7
MAR-2024	7616	709	12	13	183	185	-4
APR-2024	7647	692	17	20	197	168	31
MAY-2024	7666	691	12	16	191	173	19
JUN-2024	7678	706	5	23	173	177	12
JUL-2024	7697	695	15	10	185	159	19
AUG-2024	7686	710	13	15	164	168	-11
SEP-2024	7674	716	9	7	182	186	-12
OCT-2024	7702	709	8	15	200	172	28
NOV-2024	7674	746	14	9	181	199	-28
DEC-2024	7693	743	15	10	194	170	19
JAN-2025	7712	716	14	14	196	170	19
FEB-2025	7673	759	10	9	166	201	-39
MAR-2025	7668	759	12	12	175	177	-5
APR-2025	7703	736	9	12	193	157	35

**ARV:** antiretroviral

**On ARV Treatment:** based on dispensing data, participants with a record of ARV medication in the specified month and not deceased or moved out of program

**Off ARV Treatment:** based on dispensing data, participants with no record of ARV medication in the specified month and not deceased or moved out of program

**Deceased:** in the specified month, and on ARV treatment in the previous month

**ARV Treatment naïve starts:** participants starting ARV treatment in the specified month for the first time

**ARV Treatment experienced starts:** participants with history of ARV treatment, but first dispensing in the BC HIV Treatment Program in the specified month

**Newly Interrupted ARV Treatment:** based on dispensing data, participants with no record of ARV medication in the specified month, but had a record of ARV medication in the previous month, and not deceased or moved out of program, and had contact with the program in the past 5 years.

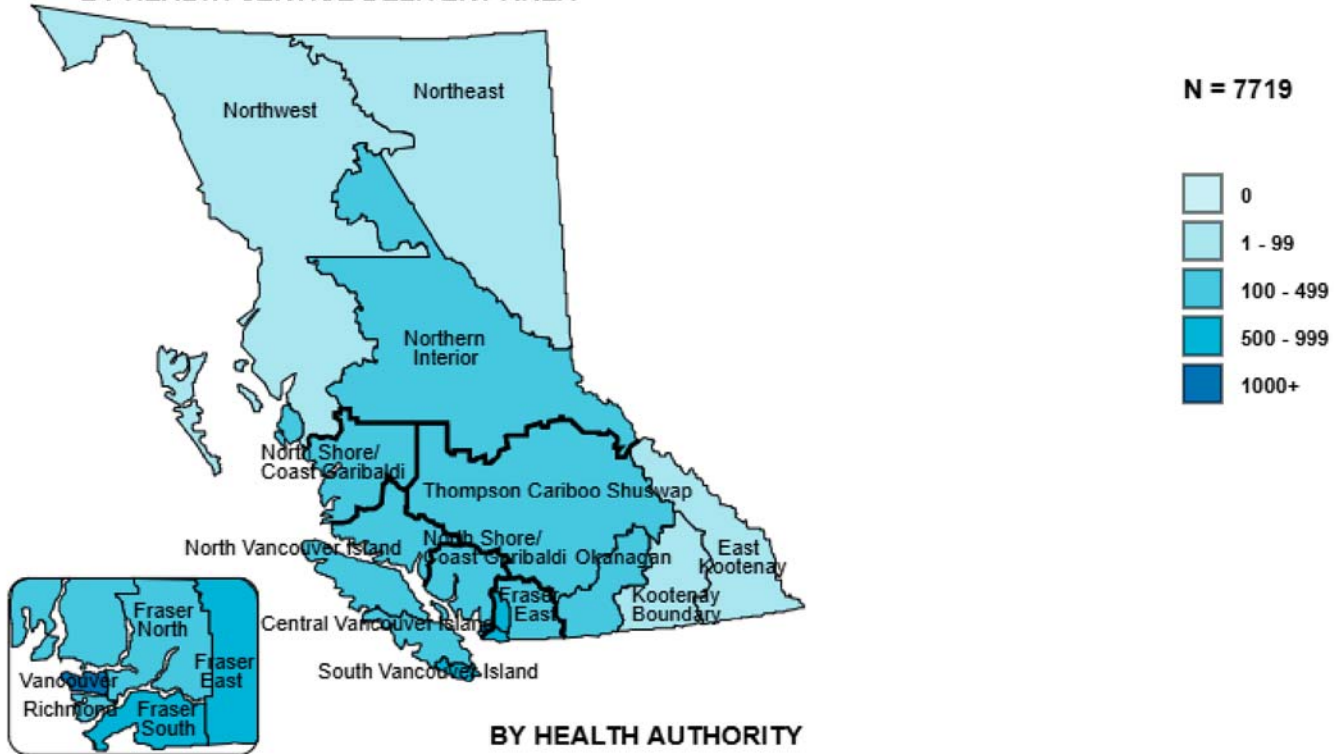
**Net Change:** the difference between ARV treatment starts (naïve and experienced) and ARV treatment stops (Deceased, moved out of program, or newly interrupted ARV treatment)





### 3.1 Distribution of HIV Treatment Program Active Participants April 2025

#### BY HEALTH SERVICE DELIVERY AREA



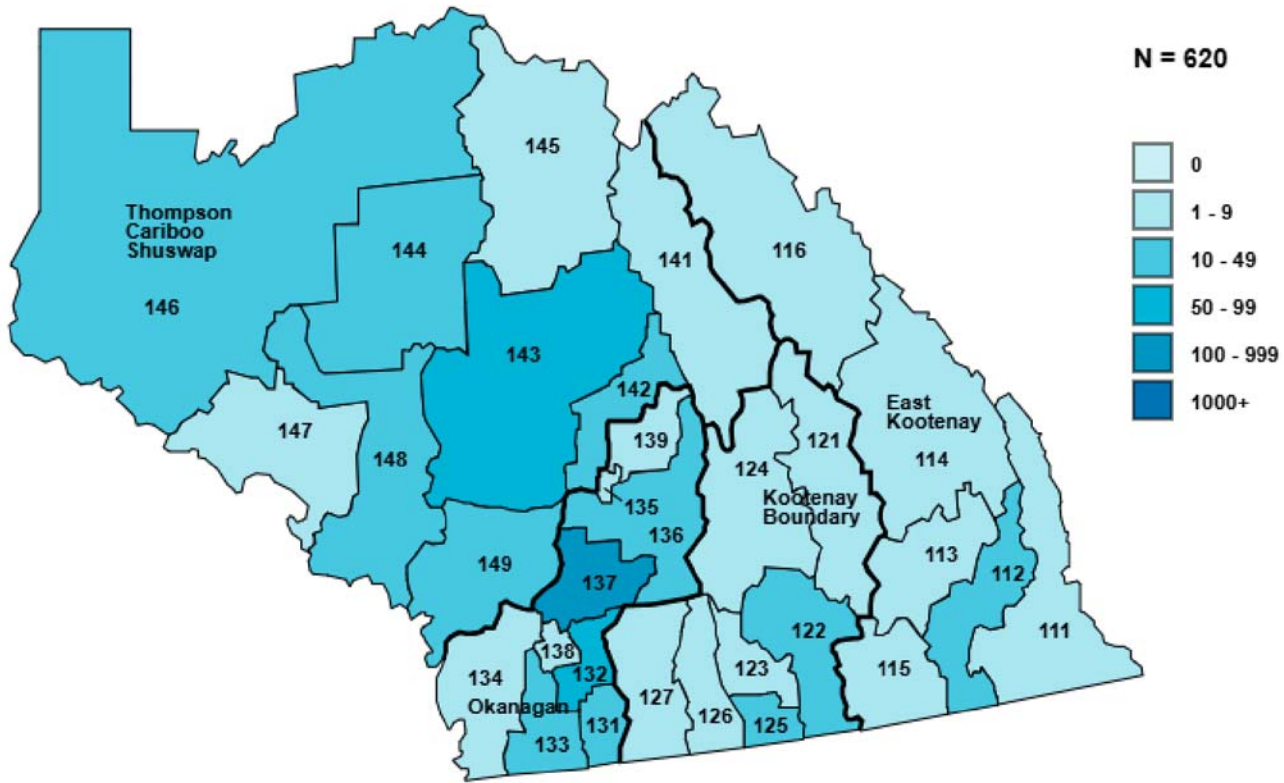
#### BY HEALTH AUTHORITY



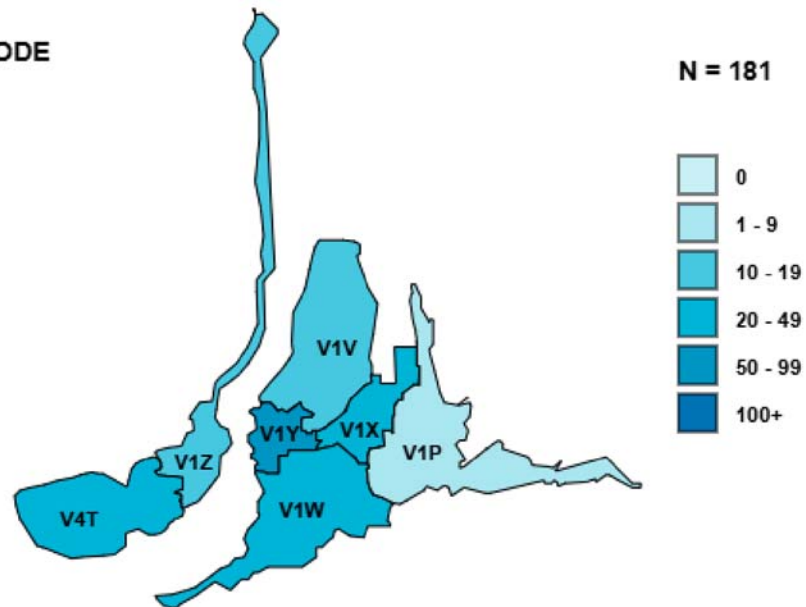


### 3.2 Distribution of HIV Treatment Program Active Participants April 2025

#### INTERIOR HEALTH AUTHORITY BY HEALTH SERVICE DELIVERY AREA/LOCAL HEALTH AREA



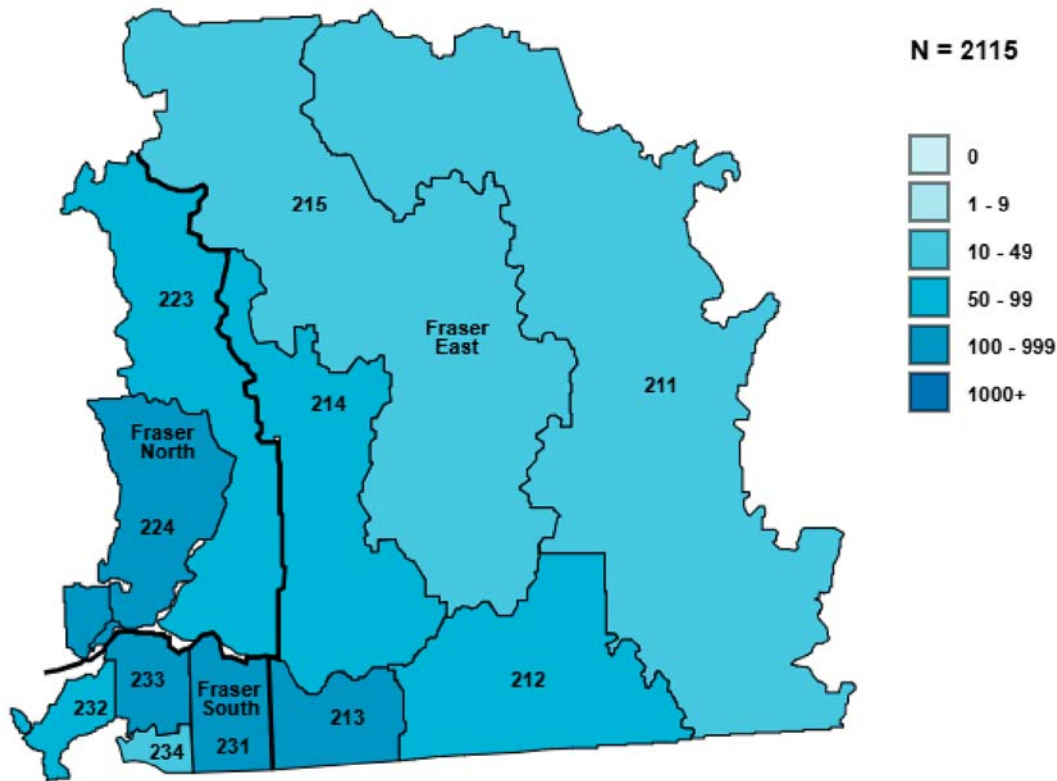
#### KELOWNA BY POSTAL CODE



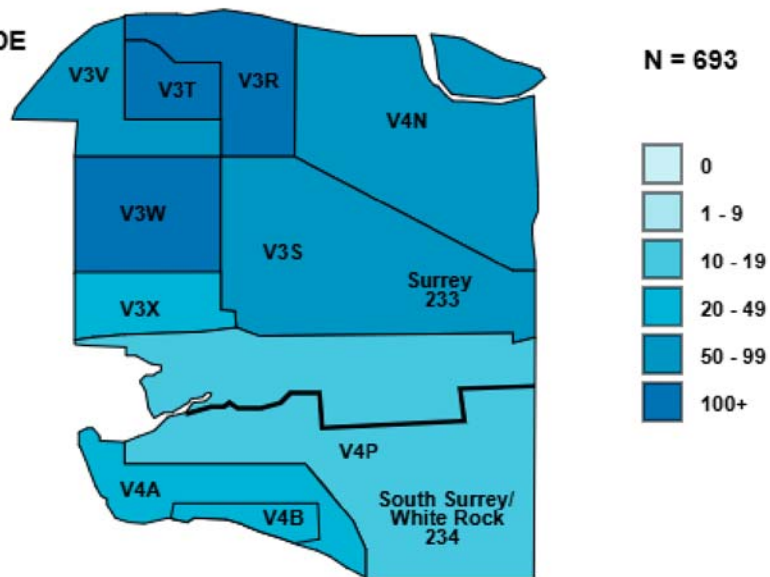


### 3.3 Distribution of HIV Treatment Program Active Participants April 2025

#### FRASER HEALTH AUTHORITY BY HEALTH SERVICE DELIVERY AREA/LOCAL HEALTH AREA

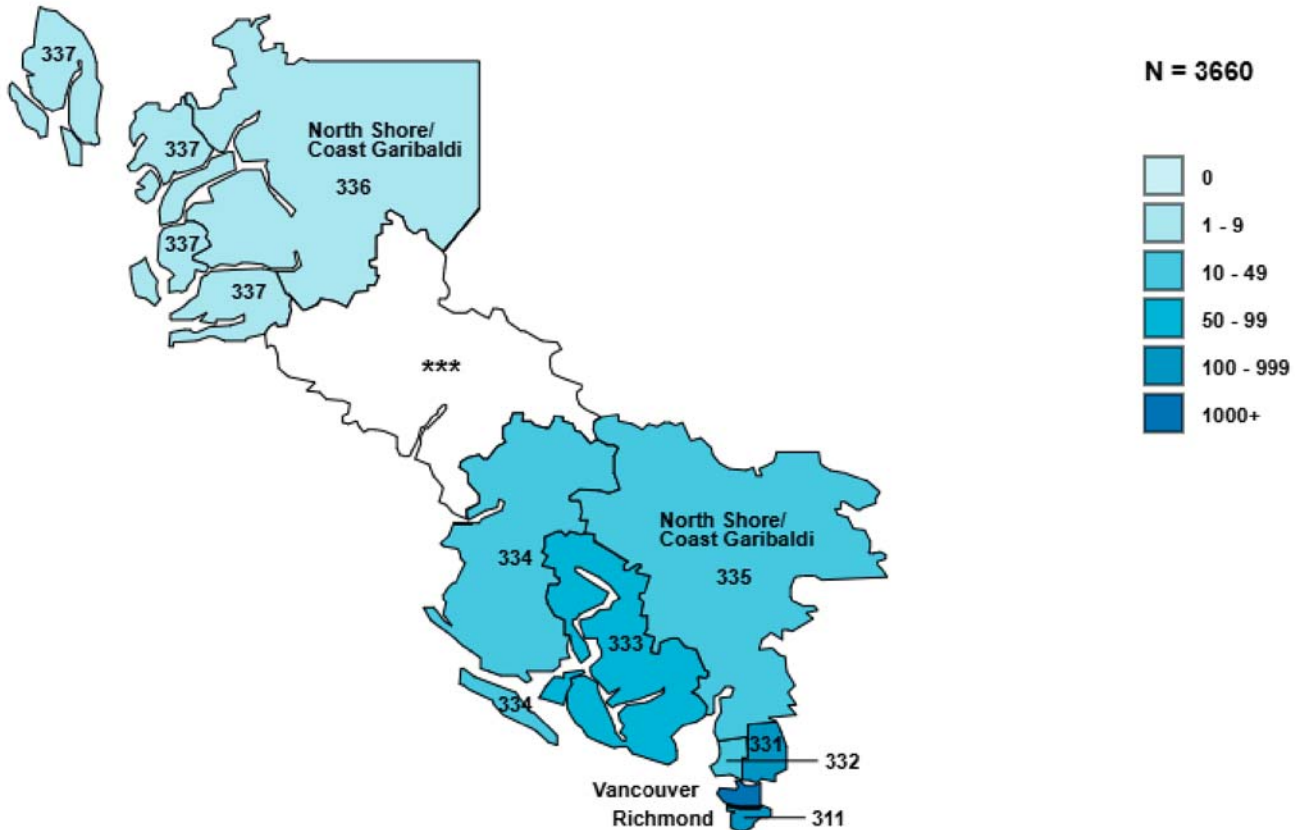


#### SURREY BY POSTAL CODE

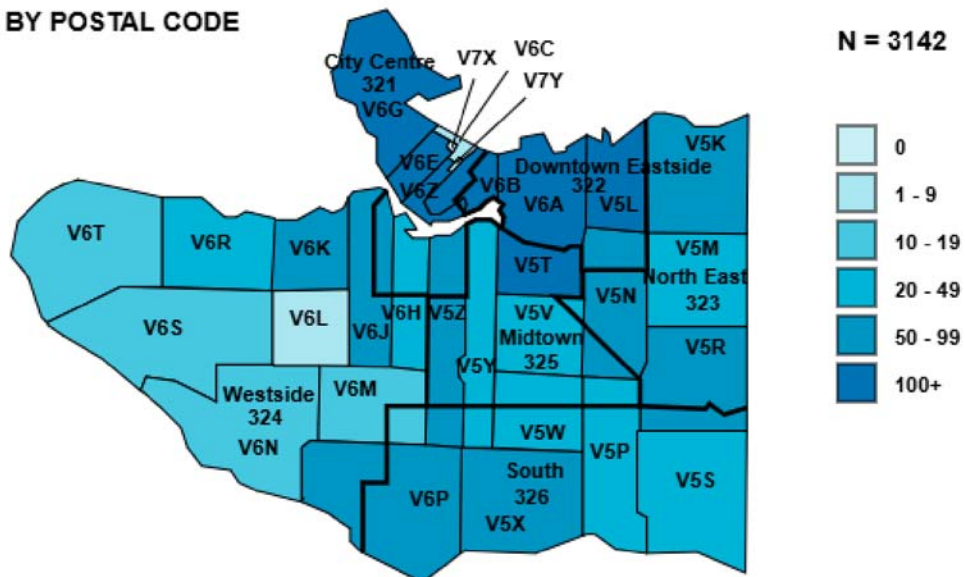


3.4 Distribution of HIV Treatment Program Active Participants April 2025

VANCOUVER COASTAL HEALTH AUTHORITY BY HEALTH SERVICE DELIVERY AREA/LOCAL HEALTH AREA



VANCOUVER BY POSTAL CODE



\*\*\* Please refer to VIHA (432 and 434) on the next page

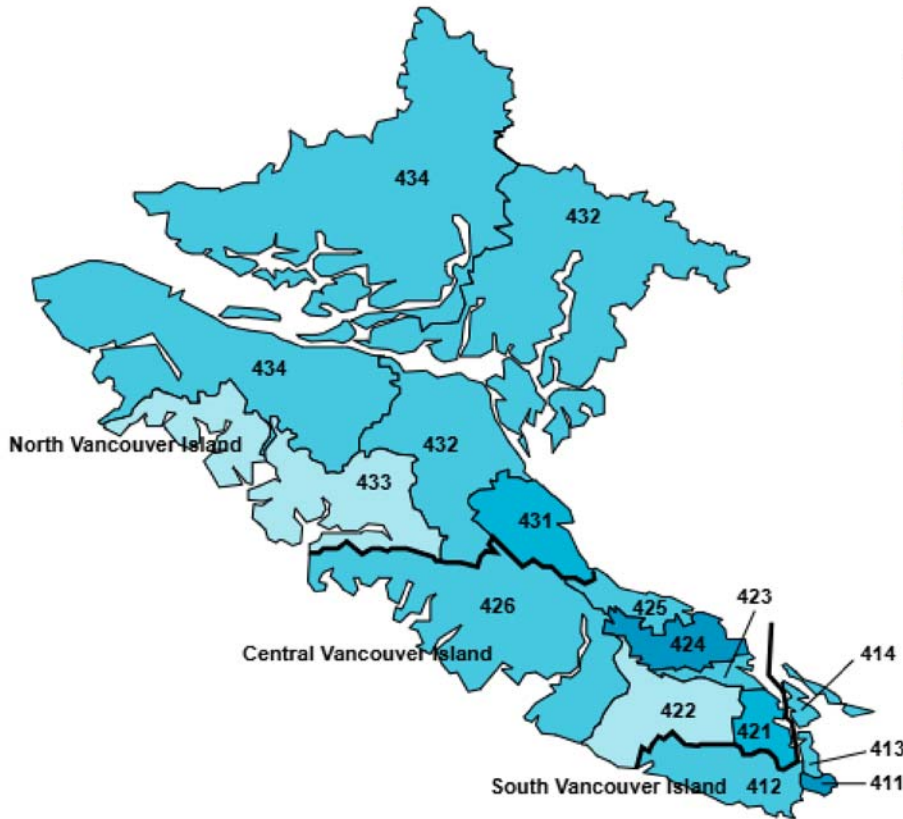
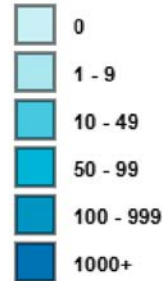




### 3.5 Distribution of HIV Treatment Program Active Participants April 2025

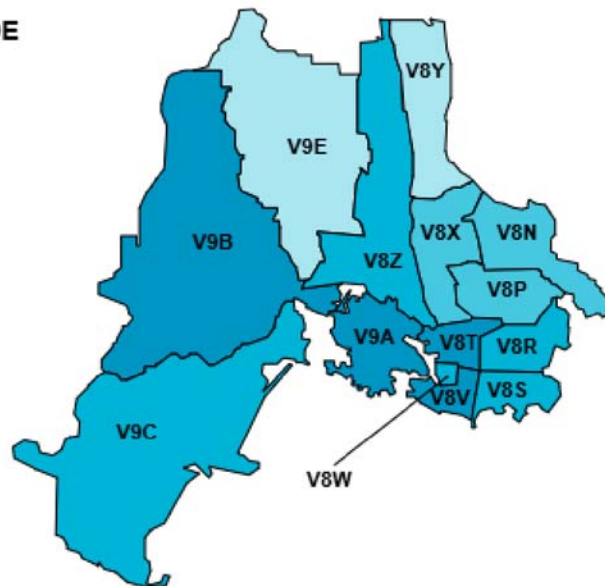
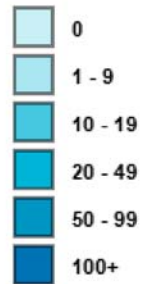
#### VANCOUVER ISLAND HEALTH AUTHORITY BY HEALTH SERVICE DELIVERY AREA/LOCAL HEALTH AREA

N = 1069



#### VICTORIA BY POSTAL CODE

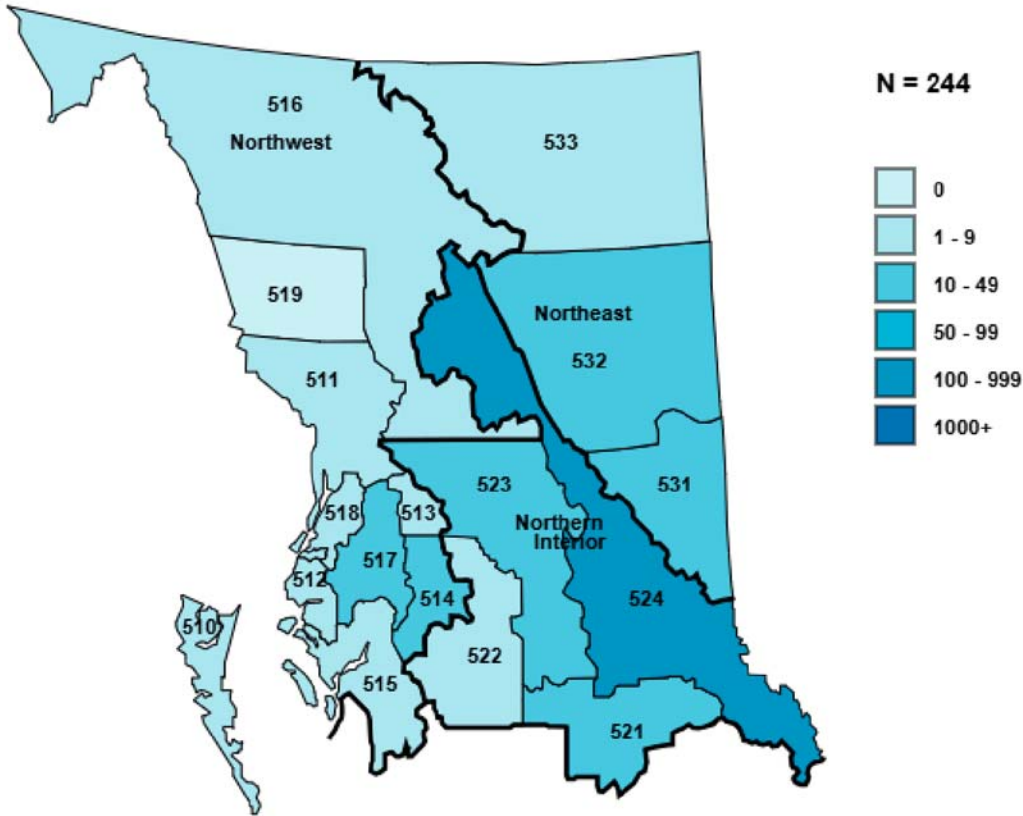
N = 522



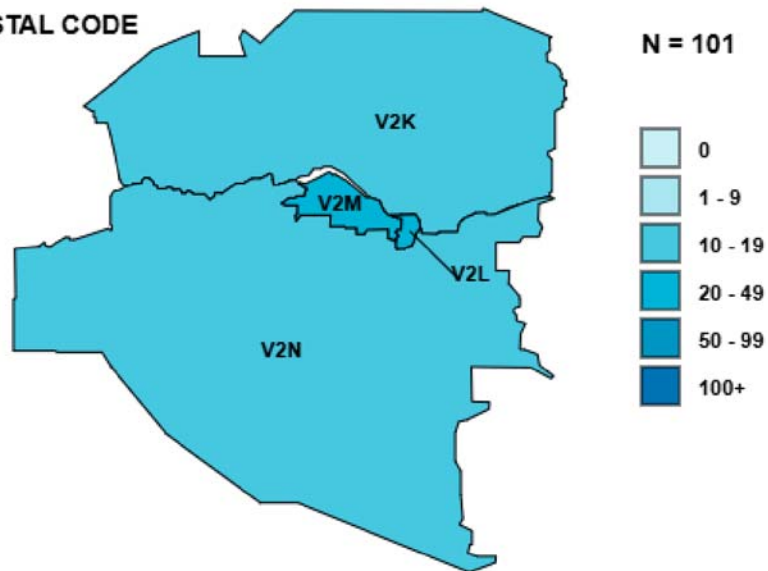


3.6 Distribution of HIV Treatment Program Active Participants April 2025

NORTHERN HEALTH AUTHORITY BY HEALTH SERVICE DELIVERY AREA/LOCAL HEALTH AREA



PRINCE GEORGE BY POSTAL CODE



**4.1 Distribution of Participants by Age & Sex at Birth INTERIOR Health Authority (HA)**

Health Service Delivery Area	Age Group	# Enrolled	# on ART	# First Starts	# CD4 Tested	Median CD4	# pVL Tested	Median pVL
EAST KOOTENAY	0 - 29	*	*	0	0	N/A	*	*
	30 - 49	*	*	0	12	830	*	*
	50 - 64	*	*	0	14	730	*	*
	65+	*	*	0	6	590	*	*
	<b>Total HSDA:</b>	<b>36</b>	<b>30</b>	<b>0</b>	<b>32</b>	<b>765</b>	<b>29</b>	<b>&lt;40</b>
KOOTENAY BOUNDARY	0 - 29	5	5	0	5	890	5	<40
	30 - 49	15	14	0	11	760	14	<40
	50 - 64	21	17	0	18	575	15	<40
	65+	17	16	0	12	700	14	<40
	<b>Total HSDA:</b>	<b>58</b>	<b>52</b>	<b>0</b>	<b>46</b>	<b>755</b>	<b>48</b>	<b>&lt;40</b>
OKANAGAN	0 - 29	15	15	0	15	740	14	<40
	30 - 49	124	118	0	114	685	96	<40
	50 - 64	162	153	0	143	690	131	<40
	65+	82	79	0	76	540	72	<40
	<b>Total HSDA:</b>	<b>383</b>	<b>365</b>	<b>0</b>	<b>348</b>	<b>650</b>	<b>313</b>	<b>&lt;40</b>
THOMPSON/CARIBOO/SHUSWAP	0 - 29	14	13	*	11	600	10	<40
	30 - 49	58	48	*	44	750	41	<40
	50 - 64	87	77	*	70	680	69	<40
	65+	36	35	*	28	715	31	<40
	<b>Total HSDA:</b>	<b>195</b>	<b>173</b>	<b>&lt;5</b>	<b>153</b>	<b>690</b>	<b>151</b>	<b>&lt;40</b>
<b>Total HA:</b>		<b>672</b>	<b>620</b>	<b>&lt;5</b>	<b>579</b>	<b>680</b>	<b>541</b>	<b>&lt;40</b>

	Age Group	# Enrolled	# on ART	# First Starts	# CD4 Tested	Median CD4	# pVL Tested	Median pVL
	0 - 29	35	34	*	31	740	30	<40
	30 - 49	212	189	*	181	710	163	<40
	50 - 64	283	260	*	245	680	226	<40
	65+	142	137	*	122	590	122	<40
<b>Total HA:</b>		<b>672</b>	<b>620</b>	<b>&lt;5</b>	<b>579</b>	<b>680</b>	<b>541</b>	<b>&lt;40</b>

Sex at Birth	# Enrolled	# on ART	# First Starts	# CD4 Tested	Median CD4	# pVL Tested	Median pVL
Male	540	500	*	463	660	442	<40
Female	132	120	*	116	720	99	<40
Unknown	0	0	*	0	N/A	0	N/A

Currently on antiretroviral treatment	# of Participants	Median Age	Median CD4	Median pVL
<b>Total HA:</b>	<b>620</b>	<b>56</b>	<b>680</b>	<b>&lt;40</b>

\* Participant values and corresponding data > 0 and < 5 are suppressed for privacy purposes.

# **Enrolled**: Participants who had enrolled in the HIV Treatment Program, but not known to be deceased or formally reported as moved out of program  
 # **on ART**: # of participants on antiretroviral treatment (ART) in the specified month based on dispensing record  
 # **CD4** or **pVL** tested: participants tested for CD4 or pVL within the past 12 months and 6 months, respectively (CD4 in cells/μL and pVL in copies/mL)



**4.2 Distribution of Participants by Program Duration INTERIOR Health Authority**

HSDA	Program Duration	# Enrolled	# on ART	# First Starts	# CD4 Tested	Median CD4	# pVL Tested	Median pVL
EAST KOOTENAY	10 years or more	16	14	0	14	710	12	<40
	5 years or more	10	8	0	8	875	8	<40
	<5 years	10	8	0	10	830	9	<40
	Never on ART	0	0	0	0	N/A	0	N/A
	<b>Total HSDA:</b>	<b>36</b>	<b>30</b>	<b>0</b>	<b>32</b>	<b>765</b>	<b>29</b>	<b>&lt;40</b>
KOOTENAY BOUNDARY	10 years or more	42	37	0	32	705	34	<40
	5 years or more	8	7	0	6	770	7	<40
	<5 years	8	8	0	8	755	7	<40
	Never on ART	0	0	0	0	N/A	0	N/A
	<b>Total HSDA:</b>	<b>58</b>	<b>52</b>	<b>0</b>	<b>46</b>	<b>755</b>	<b>48</b>	<b>&lt;40</b>
OKANAGAN	10 years or more	242	233	0	*	*	*	*
	5 years or more	63	59	0	*	*	*	*
	<5 years	78	73	0	*	*	*	*
	Never on ART	0	0	0	*	*	*	*
	<b>Total HSDA:</b>	<b>383</b>	<b>365</b>	<b>0</b>	<b>348</b>	<b>650</b>	<b>313</b>	<b>&lt;40</b>
THOMPSON/CARIBOO/SHUSWAP	10 years or more	122	107	*	98	690	94	<40
	5 years or more	26	22	*	16	765	19	<40
	<5 years	47	44	*	39	600	38	<40
	Never on ART	0	0	*	0	N/A	0	N/A
	<b>Total HSDA:</b>	<b>195</b>	<b>173</b>	<b>&lt;5</b>	<b>153</b>	<b>690</b>	<b>151</b>	<b>&lt;40</b>
<b>Total HA:</b>		<b>672</b>	<b>620</b>	<b>&lt;5</b>	<b>579</b>	<b>680</b>	<b>541</b>	<b>&lt;40</b>

	Program Duration	# Enrolled	# on ART	# First Starts	# CD4 Tested	Median CD4	# pVL Tested	Median pVL
	10 years or more	422	391	*	*	*	*	*
	5 years or more	107	96	*	*	*	*	*
	<5 years	143	133	*	*	*	*	*
	Never on ART	0	0	*	*	*	*	*
<b>Total HA:</b>		<b>672</b>	<b>620</b>	<b>&lt;5</b>	<b>579</b>	<b>680</b>	<b>541</b>	<b>&lt;40</b>

\* Participant values and corresponding data > 0 and < 5 are suppressed for privacy purposes.

# **Enrolled:** Participants who had enrolled in HIV Treatment Program, not known to be deceased or formally reported as moved out of program

# **on ART:** Participants on antiretroviral treatment (ART) in the specified month based on dispensing record (as above footnote)

**Program Duration:** years since first antiretroviral treatment dispensing in BC HIV Treatment Program

# **CD4 or pVL tested:** participants tested for CD4 or pVL within the past 12 months and 6 months, respectively





4.3 Distribution of Antiretroviral Treatment Prescribers INTERIOR Health Authority

HSDA of Prescriber Residency	# of Prescribers currently prescribing Antiretroviral Treatment	# of Participants currently treated by Prescribers	# of Prescribers ever prescribed Antiretroviral Treatment	# of Participants ever treated by Prescribers
EAST KOOTENAY	13	32	53	103
KOOTENAY BOUNDARY	18	41	76	140
OKANAGAN	54	332	245	1114
THOMPSON/CARIBOO/SHUSWAP	30	139	152	592
<b>Total:</b>	<b>115</b>	<b>544</b>	<b>526</b>	<b>1949</b>

HSDA of Participant Residency	# of Participants with Prescriber out of HA/HSDA
EAST KOOTENAY	*
KOOTENAY BOUNDARY	*
OKANAGAN	*
THOMPSON/CARIBOO/SHUSWAP	*
<b>Total:</b>	<b>127</b>

\* Participant values and corresponding data > 0 and < 5 are suppressed for privacy purposes.

**Currently prescribing Antiretroviral Treatment:** number of prescribers of antiretroviral treatment dispensed in the previous 6 months (based on participant HA/HSDA)

**Currently treated:** number of participants with antiretroviral treatment dispensed in the previous 6 months by antiretroviral treatment prescribers (based on follow-up prescriber HA/HSDA)

**Prescribers ever prescribed Antiretroviral Treatment:** for participants residing in HA/HSDA

**Participants ever treated by prescribers:** where follow-up prescriber is in the HA/HSDA

**Participants with Prescriber out of HA/HSDA:** participants residing in specified HA/HSDA with follow-up prescriber(s) in another HA/HSDA



**4.4 Distribution of Participants by Age & Sex at Birth FRASER Health Authority (HA)**

Health Service Delivery Area	Age Group	# Enrolled	# on ART	# First Starts	# CD4 Tested	Median CD4	# pVL Tested	Median pVL
FRASER EAST	0 - 29	31	25	0	29	710	31	<40
	30 - 49	110	93	0	85	730	92	<40
	50 - 64	156	139	0	106	597	133	<40
	65+	72	70	0	48	750	66	<40
	<b>Total HSDA:</b>	<b>369</b>	<b>327</b>	<b>0</b>	<b>268</b>	<b>685</b>	<b>322</b>	<b>&lt;40</b>
FRASER NORTH	0 - 29	49	42	0	44	575	44	<40
	30 - 49	374	335	0	298	720	320	<40
	50 - 64	362	339	0	243	700	318	<40
	65+	171	159	0	103	660	146	<40
	<b>Total HSDA:</b>	<b>956</b>	<b>875</b>	<b>0</b>	<b>688</b>	<b>685</b>	<b>828</b>	<b>&lt;40</b>
FRASER SOUTH	0 - 29	68	63	*	58	595.5	65	<40
	30 - 49	359	326	*	256	700	307	<40
	50 - 64	394	365	*	254	630	338	<40
	65+	163	159	*	114	565	159	<40
	<b>Total HSDA:</b>	<b>984</b>	<b>913</b>	<b>5</b>	<b>682</b>	<b>650</b>	<b>869</b>	<b>&lt;40</b>
<b>Total HA:</b>		<b>2309</b>	<b>2115</b>	<b>5</b>	<b>1638</b>	<b>670</b>	<b>2019</b>	<b>&lt;40</b>

	Age Group	# Enrolled	# on ART	# First Starts	# CD4 Tested	Median CD4	# pVL Tested	Median pVL
	0 - 29	148	130	*	131	630	140	<40
	30 - 49	843	754	*	639	710	719	<40
	50 - 64	912	843	*	603	650	789	<40
	65+	406	388	*	265	610	371	<40
<b>Total HA:</b>		<b>2309</b>	<b>2115</b>	<b>5</b>	<b>1638</b>	<b>670</b>	<b>2019</b>	<b>&lt;40</b>

Sex at Birth	# Enrolled	# on ART	# First Starts	# CD4 Tested	Median CD4	# pVL Tested	Median pVL
Male	1744	1614	*	1189	660	1535	<40
Female	565	501	*	449	710	484	<40
Unknown	0	0	*	0	N/A	0	N/A

Currently on antiretroviral treatment	# of Participants	Median Age	Median CD4	Median pVL
<b>Total HA:</b>	<b>2115</b>	<b>53</b>	<b>680</b>	<b>&lt;40</b>

\* Participant values and corresponding data > 0 and < 5 are suppressed for privacy purposes.

# **Enrolled:** Participants who had enrolled in the HIV Treatment Program, but not known to be deceased or formally reported as moved out of program  
 # **on ART:** # of participants on antiretroviral treatment (ART) in the specified month based on dispensing record  
 # **CD4 or pVL tested:** participants tested for CD4 or pVL within the past 12 months and 6 months, respectively (CD4 in cells/ $\mu$ L and pVL in copies/mL)



**4.5 Distribution of Participants by Program Duration FRASER Health Authority**

HSDA	Program Duration	# Enrolled	# on ART	# First Starts	# CD4 Tested	Median CD4	# pVL Tested	Median pVL
FRASER EAST	10 years or more	237	214	0	*	*	*	*
	5 years or more	57	44	0	*	*	*	*
	<5 years	75	69	0	*	*	*	*
	Never on ART	0	0	0	*	*	*	*
	<b>Total HSDA:</b>	<b>369</b>	<b>327</b>	<b>0</b>	<b>268</b>	<b>685</b>	<b>322</b>	<b>&lt;40</b>
FRASER NORTH	10 years or more	592	547	0	398	715	511	<40
	5 years or more	171	155	0	129	700	142	<40
	<5 years	193	173	0	161	610	175	<40
	Never on ART	0	0	0	0	N/A	0	N/A
	<b>Total HSDA:</b>	<b>956</b>	<b>875</b>	<b>0</b>	<b>688</b>	<b>685</b>	<b>828</b>	<b>&lt;40</b>
FRASER SOUTH	10 years or more	571	528	0	*	*	*	*
	5 years or more	174	153	0	*	*	*	*
	<5 years	239	232	5	*	*	*	*
	Never on ART	0	0	0	*	*	*	*
	<b>Total HSDA:</b>	<b>984</b>	<b>913</b>	<b>5</b>	<b>682</b>	<b>650</b>	<b>869</b>	<b>&lt;40</b>
<b>Total HA:</b>		<b>2309</b>	<b>2115</b>	<b>5</b>	<b>1638</b>	<b>670</b>	<b>2019</b>	<b>&lt;40</b>

	Program Duration	# Enrolled	# on ART	# First Starts	# CD4 Tested	Median CD4	# pVL Tested	Median pVL
	10 years or more	1400	1289	0	941	690	1212	<40
	5 years or more	402	352	0	279	670	335	<40
	<5 years	507	474	5	413	630	467	<40
	Never on ART	0	0	0	5	550	5	120
<b>Total HA:</b>		<b>2309</b>	<b>2115</b>	<b>5</b>	<b>1638</b>	<b>670</b>	<b>2019</b>	<b>&lt;40</b>

\* Participant values and corresponding data > 0 and < 5 are suppressed for privacy purposes.

# **Enrolled:** Participants who had enrolled in HIV Treatment Program, not known to be deceased or formally reported as moved out of program

# **on ART:** Participants on antiretroviral treatment (ART) in the specified month based on dispensing record (as above footnote)

**Program Duration:** years since first antiretroviral treatment dispensing in BC HIV Treatment Program

# **CD4 or pVL tested:** participants tested for CD4 or pVL within the past 12 months and 6 months, respectively





4.6 Distribution of Antiretroviral Treatment Prescribers FRASER Health Authority

HSDA of Prescriber Residency	# of Prescribers currently prescribing Antiretroviral Treatment	# of Participants currently treated by Prescribers	# of Prescribers ever prescribed Antiretroviral Treatment	# of Participants ever treated by Prescribers
FRASER EAST	30	64	154	555
FRASER NORTH	28	242	268	1659
FRASER SOUTH	43	555	238	1967
<b>Total:</b>	<b>101</b>	<b>861</b>	<b>660</b>	<b>4181</b>

HSDA of Participant Residency	# of Participants with Prescriber out of HA/HSDA
FRASER EAST	218
FRASER NORTH	718
FRASER SOUTH	480
<b>Total:</b>	<b>1416</b>

\* Participant values and corresponding data > 0 and < 5 are suppressed for privacy purposes.

**Currently prescribing Antiretroviral Treatment:** number of prescribers of antiretroviral treatment dispensed in the previous 6 months (based on participant HA/HSDA)

**Currently treated:** number of participants with antiretroviral treatment dispensed in the previous 6 months by antiretroviral treatment prescribers (based on follow-up prescriber HA/HSDA)

**Prescribers ever prescribed Antiretroviral Treatment:** for participants residing in HA/HSDA

**Participants ever treated by prescribers:** where follow-up prescriber is in the HA/HSDA

**Participants with Prescriber out of HA/HSDA:** participants residing in specified HA/HSDA with follow-up prescriber(s) in another HA/HSDA



**4.7 Distribution of Participants by Age & Sex at Birth VANCOUVER COASTAL Health Authority (HA)**

Health Service Delivery Area	Age Group	# Enrolled	# on ART	# First Starts	# CD4 Tested	Median CD4	# pVL Tested	Median pVL
NORTH SHORE/COAST GARIBALDI	0 - 29	12	11	*	10	900	11	<40
	30 - 49	79	74	*	58	690	65	<40
	50 - 64	131	123	*	82	735	107	<40
	65+	95	90	*	75	650	80	<40
	<b>Total HSDA:</b>	<b>317</b>	<b>298</b>	<b>&lt;5</b>	<b>225</b>	<b>700</b>	<b>263</b>	<b>&lt;40</b>
RICHMOND	0 - 29	11	9	0	11	610	7	<40
	30 - 49	63	58	0	55	630	53	<40
	50 - 64	76	71	0	59	640	71	<40
	65+	30	30	0	26	540	28	<40
	<b>Total HSDA:</b>	<b>180</b>	<b>168</b>	<b>0</b>	<b>151</b>	<b>620</b>	<b>159</b>	<b>&lt;40</b>
VANCOUVER	0 - 29	108	96	*	93	730	99	<40
	30 - 49	1149	1008	*	825	690	976	<40
	50 - 64	1507	1395	*	1030	610	1333	<40
	65+	729	695	*	451	630	686	<40
	<b>Total HSDA:</b>	<b>3493</b>	<b>3194</b>	<b>&lt;5</b>	<b>2399</b>	<b>650</b>	<b>3094</b>	<b>&lt;40</b>
<b>Total HA:</b>		<b>3990</b>	<b>3660</b>	<b>&lt;5</b>	<b>2775</b>	<b>650</b>	<b>3516</b>	<b>&lt;40</b>

	Age Group	# Enrolled	# on ART	# First Starts	# CD4 Tested	Median CD4	# pVL Tested	Median pVL
	0 - 29	131	116	*	114	725	117	<40
	30 - 49	1291	1140	*	938	690	1094	<40
	50 - 64	1714	1589	*	1171	620	1511	<40
	65+	854	815	*	552	620	794	<40
<b>Total HA:</b>		<b>3990</b>	<b>3660</b>	<b>&lt;5</b>	<b>2775</b>	<b>650</b>	<b>3516</b>	<b>&lt;40</b>

Sex at Birth	# Enrolled	# on ART	# First Starts	# CD4 Tested	Median CD4	# pVL Tested	Median pVL
Male	3494	3216	*	2319	650	3099	<40
Female	496	444	*	456	650	417	<40
Unknown	0	0	*	0	N/A	0	N/A

Currently on antiretroviral treatment	# of Participants	Median Age	Median CD4	Median pVL
<b>Total HA:</b>	<b>3660</b>	<b>56</b>	<b>660</b>	<b>&lt;40</b>

\* Participant values and corresponding data > 0 and < 5 are suppressed for privacy purposes.

# **Enrolled**: Participants who had enrolled in the HIV Treatment Program, but not known to be deceased or formally reported as moved out of program  
 # **on ART**: # of participants on antiretroviral treatment (ART) in the specified month based on dispensing record  
 # **CD4** or **pVL** tested: participants tested for CD4 or pVL within the past 12 months and 6 months, respectively (CD4 in cells/ $\mu$ L and pVL in copies/mL)



**4.8 Distribution of Participants by Program Duration VANCOUVER COASTAL Health Authority**

HSDA	Program Duration	# Enrolled	# on ART	# First Starts	# CD4 Tested	Median CD4	# pVL Tested	Median pVL
NORTH SHORE/COAST GARIBALDI	10 years or more	227	212	*	*	*	183	<40
	5 years or more	45	44	*	*	*	40	<40
	<5 years	45	42	*	*	*	40	<40
	Never on ART	0	0	*	*	*	0	N/A
	<b>Total HSDA:</b>	<b>317</b>	<b>298</b>	<b>&lt;5</b>	<b>225</b>	<b>700</b>	<b>263</b>	<b>&lt;40</b>
RICHMOND	10 years or more	103	98	0	78	635	92	<40
	5 years or more	32	26	0	27	620	24	<40
	<5 years	45	44	0	46	620	43	<40
	Never on ART	0	0	0	0	N/A	0	N/A
	<b>Total HSDA:</b>	<b>180</b>	<b>168</b>	<b>0</b>	<b>151</b>	<b>620</b>	<b>159</b>	<b>&lt;40</b>
VANCOUVER	10 years or more	2439	2273	*	*	*	*	*
	5 years or more	558	478	*	*	*	*	*
	<5 years	496	443	*	*	*	*	*
	Never on ART	0	0	*	*	*	*	*
	<b>Total HSDA:</b>	<b>3493</b>	<b>3194</b>	<b>&lt;5</b>	<b>2399</b>	<b>650</b>	<b>3094</b>	<b>&lt;40</b>
<b>Total HA:</b>		<b>3990</b>	<b>3660</b>	<b>&lt;5</b>	<b>2775</b>	<b>650</b>	<b>3516</b>	<b>&lt;40</b>

	Program Duration	# Enrolled	# on ART	# First Starts	# CD4 Tested	Median CD4	# pVL Tested	Median pVL
	10 years or more	2769	2583	*	1841	630	*	*
	5 years or more	635	548	*	431	720	*	*
	<5 years	586	529	*	498	670	*	*
	Never on ART	0	0	*	5	740	*	*
<b>Total HA:</b>		<b>3990</b>	<b>3660</b>	<b>&lt;5</b>	<b>2775</b>	<b>650</b>	<b>3516</b>	<b>&lt;40</b>

\* Participant values and corresponding data > 0 and < 5 are suppressed for privacy purposes.

# **Enrolled:** Participants who had enrolled in HIV Treatment Program, not known to be deceased or formally reported as moved out of program

# **on ART:** Participants on antiretroviral treatment (ART) in the specified month based on dispensing record (as above footnote)

**Program Duration:** years since first antiretroviral treatment dispensing in BC HIV Treatment Program

# **CD4 or pVL tested:** participants tested for CD4 or pVL within the past 12 months and 6 months, respectively





4.9 Distribution of Antiretroviral Treatment Prescribers VANCOUVER COASTAL Health Authority

HSDA of Prescriber Residency	# of Prescribers currently prescribing Antiretroviral Treatment	# of Participants currently treated by Prescribers	# of Prescribers ever prescribed Antiretroviral Treatment	# of Participants ever treated by Prescribers
NORTH SHORE/COAST GARIBALDI	37	58	201	580
RICHMOND	9	112	49	341
VANCOUVER	201	5393	698	12195
<b>Total:</b>	<b>247</b>	<b>5563</b>	<b>948</b>	<b>13116</b>

HSDA of Participant Residency	# of Participants with Prescriber out of HA/HSDA
NORTH SHORE/COAST GARIBALDI	*
RICHMOND	*
VANCOUVER	*
<b>Total:</b>	<b>61</b>

\* Participant values and corresponding data > 0 and < 5 are suppressed for privacy purposes.

**Currently prescribing Antiretroviral Treatment:** number of prescribers of antiretroviral treatment dispensed in the previous 6 months (based on participant HA/HSDA)

**Currently treated:** number of participants with antiretroviral treatment dispensed in the previous 6 months by antiretroviral treatment prescribers (based on follow-up prescriber HA/HSDA)

**Prescribers ever prescribed Antiretroviral Treatment:** for participants residing in HA/HSDA

**Participants ever treated by prescribers:** where follow-up prescriber is in the HA/HSDA

**Participants with Prescriber out of HA/HSDA:** participants residing in specified HA/HSDA with follow-up prescriber(s) in another HA/HSDA



**4.10 Distribution of Participants by Age & Sex at Birth VANCOUVER ISLAND Health Authority (HA)**

Health Service Delivery Area	Age Group	# Enrolled	# on ART	# First Starts	# CD4 Tested	Median CD4	# pVL Tested	Median pVL
CENTRAL VANCOUVER ISLAND	0 - 29	8	6	0	5	810	6	<40
	30 - 49	82	79	0	54	655	71	<40
	50 - 64	143	133	0	75	700	111	<40
	65+	86	83	0	42	515	77	<40
	<b>Total HSDA:</b>	<b>319</b>	<b>301</b>	<b>0</b>	<b>176</b>	<b>590</b>	<b>265</b>	<b>&lt;40</b>
NORTH VANCOUVER ISLAND	0 - 29	5	*	0	*	*	5	<40
	30 - 49	29	*	0	*	*	16	<40
	50 - 64	54	*	0	*	*	38	<40
	65+	34	*	0	*	*	26	<40
	<b>Total HSDA:</b>	<b>122</b>	<b>114</b>	<b>0</b>	<b>65</b>	<b>630</b>	<b>85</b>	<b>&lt;40</b>
SOUTH VANCOUVER ISLAND	0 - 29	27	23	0	12	555	20	<40
	30 - 49	209	186	0	74	705	163	<40
	50 - 64	313	288	0	92	630	246	<40
	65+	161	157	0	36	710	142	<40
	<b>Total HSDA:</b>	<b>710</b>	<b>654</b>	<b>0</b>	<b>214</b>	<b>660</b>	<b>571</b>	<b>&lt;40</b>
<b>Total HA:</b>		<b>1151</b>	<b>1069</b>	<b>0</b>	<b>455</b>	<b>640</b>	<b>921</b>	<b>&lt;40</b>

	Age Group	# Enrolled	# on ART	# First Starts	# CD4 Tested	Median CD4	# pVL Tested	Median pVL
	0 - 29	40	33	0	21	630	31	<40
	30 - 49	320	292	0	147	650	250	<40
	50 - 64	510	473	0	193	640	395	<40
	65+	281	271	0	94	605	245	<40
<b>Total HA:</b>		<b>1151</b>	<b>1069</b>	<b>0</b>	<b>455</b>	<b>640</b>	<b>921</b>	<b>&lt;40</b>

Sex at Birth	# Enrolled	# on ART	# First Starts	# CD4 Tested	Median CD4	# pVL Tested	Median pVL
Male	960	893	0	356	610	766	<40
Female	191	176	0	99	690	155	<40
Unknown	0	0	0	0	N/A	0	N/A

Currently on antiretroviral treatment	# of Participants	Median Age	Median CD4	Median pVL
<b>Total HA:</b>	<b>1069</b>	<b>57</b>	<b>640</b>	<b>&lt;40</b>

\* Participant values and corresponding data > 0 and < 5 are suppressed for privacy purposes.

# **Enrolled**: Participants who had enrolled in the HIV Treatment Program, but not known to be deceased or formally reported as moved out of program  
# **on ART**: # of participants on antiretroviral treatment (ART) in the specified month based on dispensing record  
# **CD4** or **pVL** tested: participants tested for CD4 or pVL within the past 12 months and 6 months, respectively (CD4 in cells/ $\mu$ L and pVL in copies/mL)



**4.11 Distribution of Participants by Program Duration VANCOUVER ISLAND Health Authority**

HSDA	Program Duration	# Enrolled	# on ART	# First Starts	# CD4 Tested	Median CD4	# pVL Tested	Median pVL
CENTRAL VANCOUVER ISLAND	10 years or more	216	202	0	106	590	175	<40
	5 years or more	53	50	0	33	750	46	<40
	<5 years	50	49	0	37	560	44	<40
	Never on ART	0	0	0	0	N/A	0	N/A
	<b>Total HSDA:</b>	<b>319</b>	<b>301</b>	<b>0</b>	<b>176</b>	<b>590</b>	<b>265</b>	<b>&lt;40</b>
NORTH VANCOUVER ISLAND	10 years or more	90	84	0	41	550	62	<40
	5 years or more	13	12	0	7	570	8	<40
	<5 years	19	18	0	17	680	15	<40
	Never on ART	0	0	0	0	N/A	0	N/A
	<b>Total HSDA:</b>	<b>122</b>	<b>114</b>	<b>0</b>	<b>65</b>	<b>630</b>	<b>85</b>	<b>&lt;40</b>
SOUTH VANCOUVER ISLAND	10 years or more	435	406	0	*	*	*	*
	5 years or more	132	116	0	*	*	*	*
	<5 years	143	132	0	*	*	*	*
	Never on ART	0	0	0	*	*	*	*
	<b>Total HSDA:</b>	<b>710</b>	<b>654</b>	<b>0</b>	<b>214</b>	<b>660</b>	<b>571</b>	<b>&lt;40</b>
<b>Total HA:</b>		<b>1151</b>	<b>1069</b>	<b>0</b>	<b>455</b>	<b>640</b>	<b>921</b>	<b>&lt;40</b>

	Program Duration	# Enrolled	# on ART	# First Starts	# CD4 Tested	Median CD4	# pVL Tested	Median pVL
	10 years or more	741	692	0	*	*	*	*
	5 years or more	198	178	0	*	*	*	*
	<5 years	212	199	0	*	*	*	*
	Never on ART	0	0	0	*	*	*	*
<b>Total HA:</b>		<b>1151</b>	<b>1069</b>	<b>0</b>	<b>455</b>	<b>640</b>	<b>921</b>	<b>&lt;40</b>

\* Participant values and corresponding data > 0 and < 5 are suppressed for privacy purposes.

# **Enrolled:** Participants who had enrolled in HIV Treatment Program, not known to be deceased or formally reported as moved out of program

# **on ART:** Participants on antiretroviral treatment (ART) in the specified month based on dispensing record (as above footnote)

**Program Duration:** years since first antiretroviral treatment dispensing in BC HIV Treatment Program

# **CD4 or pVL tested:** participants tested for CD4 or pVL within the past 12 months and 6 months, respectively





4.12 Distribution of Antiretroviral Treatment Prescribers VANCOUVER ISLAND Health Authority

HSDA of Prescriber Residency	# of Prescribers currently prescribing Antiretroviral Treatment	# of Participants currently treated by Prescribers	# of Prescribers ever prescribed Antiretroviral Treatment	# of Participants ever treated by Prescribers
CENTRAL VANCOUVER ISLAND	71	216	215	981
NORTH VANCOUVER ISLAND	32	67	155	367
SOUTH VANCOUVER ISLAND	47	603	238	2071
<b>Total:</b>	<b>150</b>	<b>886</b>	<b>608</b>	<b>3419</b>

HSDA of Participant Residency	# of Participants with Prescriber out of HA/HSDA
CENTRAL VANCOUVER ISLAND	89
NORTH VANCOUVER ISLAND	51
SOUTH VANCOUVER ISLAND	129
<b>Total:</b>	<b>269</b>

\* Participant values and corresponding data > 0 and < 5 are suppressed for privacy purposes.

**Currently prescribing Antiretroviral Treatment:** number of prescribers of antiretroviral treatment dispensed in the previous 6 months (based on participant HA/HSDA)

**Currently treated:** number of participants with antiretroviral treatment dispensed in the previous 6 months by antiretroviral treatment prescribers (based on follow-up prescriber HA/HSDA)

**Prescribers ever prescribed Antiretroviral Treatment:** for participants residing in HA/HSDA

**Participants ever treated by prescribers:** where follow-up prescriber is in the HA/HSDA

**Participants with Prescriber out of HA/HSDA:** participants residing in specified HA/HSDA with follow-up prescriber(s) in another HA/HSDA



**4.13 Distribution of Participants by Age & Sex at Birth NORTHERN Health Authority (HA)**

Health Service Delivery Area	Age Group	# Enrolled	# on ART	# First Starts	# CD4 Tested	Median CD4	# pVL Tested	Median pVL
NORTH EAST	0 - 29	*	*	0	*	*	*	*
	30 - 49	*	*	0	*	*	*	*
	50 - 64	*	*	0	*	*	*	*
	65+	*	*	0	*	*	*	*
	<b>Total HSDA:</b>	<b>46</b>	<b>35</b>	<b>0</b>	<b>43</b>	<b>550</b>	<b>35</b>	<b>&lt;40</b>
NORTH WEST	0 - 29	*	*	*	*	*	*	*
	30 - 49	*	*	*	*	*	*	*
	50 - 64	*	*	*	*	*	*	*
	65+	*	*	*	*	*	*	*
	<b>Total HSDA:</b>	<b>73</b>	<b>60</b>	<b>&lt;5</b>	<b>64</b>	<b>600</b>	<b>57</b>	<b>&lt;40</b>
NORTHERN INTERIOR	0 - 29	7	7	0	8	820	6	<40
	30 - 49	70	56	0	61	640	52	<40
	50 - 64	70	58	0	68	495	51	<40
	65+	31	28	0	31	560	26	<40
	<b>Total HSDA:</b>	<b>178</b>	<b>149</b>	<b>0</b>	<b>168</b>	<b>590</b>	<b>135</b>	<b>&lt;40</b>
<b>Total HA:</b>		<b>297</b>	<b>244</b>	<b>&lt;5</b>	<b>275</b>	<b>590</b>	<b>227</b>	<b>&lt;40</b>

	Age Group	# Enrolled	# on ART	# First Starts	# CD4 Tested	Median CD4	# pVL Tested	Median pVL
	0 - 29	13	12	*	14	675	12	<40
	30 - 49	112	86	*	96	645	83	<40
	50 - 64	124	103	*	117	540	93	<40
	65+	48	43	*	48	530	39	<40
<b>Total HA:</b>		<b>297</b>	<b>244</b>	<b>&lt;5</b>	<b>275</b>	<b>590</b>	<b>227</b>	<b>&lt;40</b>

Sex at Birth	# Enrolled	# on ART	# First Starts	# CD4 Tested	Median CD4	# pVL Tested	Median pVL
Male	195	167	*	184	590	154	<40
Female	102	77	*	91	570	73	<40
Unknown	0	0	*	0	N/A	0	N/A

Currently on antiretroviral treatment	# of Participants	Median Age	Median CD4	Median pVL
<b>Total HA:</b>	<b>244</b>	<b>54</b>	<b>590</b>	<b>&lt;40</b>

\* Participant values and corresponding data > 0 and < 5 are suppressed for privacy purposes.

# **Enrolled**: Participants who had enrolled in the HIV Treatment Program, but not known to be deceased or formally reported as moved out of program  
 # **on ART**: # of participants on antiretroviral treatment (ART) in the specified month based on dispensing record  
 # **CD4** or **pVL** tested: participants tested for CD4 or pVL within the past 12 months and 6 months, respectively (CD4 in cells/ $\mu$ L and pVL in copies/mL)



**4.14 Distribution of Participants by Program Duration NORTHERN Health Authority**

HSDA	Program Duration	# Enrolled	# on ART	# First Starts	# CD4 Tested	Median CD4	# pVL Tested	Median pVL
NORTH EAST	10 years or more	22	*	0	*	*	*	*
	5 years or more	5	*	0	*	*	*	*
	<5 years	19	*	0	*	*	*	*
	Never on ART	0	*	0	*	*	*	*
	<b>Total HSDA:</b>	<b>46</b>	<b>35</b>	<b>0</b>	<b>43</b>	<b>550</b>	<b>35</b>	<b>&lt;40</b>
NORTH WEST	10 years or more	50	38	*	43	570	35	<40
	5 years or more	9	9	*	7	780	9	<40
	<5 years	14	13	*	14	625	13	<40
	Never on ART	0	0	*	0	N/A	0	N/A
	<b>Total HSDA:</b>	<b>73</b>	<b>60</b>	<b>&lt;5</b>	<b>64</b>	<b>600</b>	<b>57</b>	<b>&lt;40</b>
NORTHERN INTERIOR	10 years or more	112	93	0	*	*	*	*
	5 years or more	39	32	0	*	*	*	*
	<5 years	27	24	0	*	*	*	*
	Never on ART	0	0	0	*	*	*	*
	<b>Total HSDA:</b>	<b>178</b>	<b>149</b>	<b>0</b>	<b>168</b>	<b>590</b>	<b>135</b>	<b>&lt;40</b>
<b>Total HA:</b>		<b>297</b>	<b>244</b>	<b>&lt;5</b>	<b>275</b>	<b>590</b>	<b>227</b>	<b>&lt;40</b>

	Program Duration	# Enrolled	# on ART	# First Starts	# CD4 Tested	Median CD4	# pVL Tested	Median pVL
	10 years or more	184	147	*	*	*	*	*
	5 years or more	53	43	*	*	*	*	*
	<5 years	60	54	*	*	*	*	*
	Never on ART	0	0	*	*	*	*	*
<b>Total HA:</b>		<b>297</b>	<b>244</b>	<b>&lt;5</b>	<b>275</b>	<b>590</b>	<b>227</b>	<b>&lt;40</b>

\* Participant values and corresponding data > 0 and < 5 are suppressed for privacy purposes.

# **Enrolled:** Participants who had enrolled in HIV Treatment Program, not known to be deceased or formally reported as moved out of program

# **on ART:** Participants on antiretroviral treatment (ART) in the specified month based on dispensing record (as above footnote)

**Program Duration:** years since first antiretroviral treatment dispensing in BC HIV Treatment Program

# **CD4 or pVL tested:** participants tested for CD4 or pVL within the past 12 months and 6 months, respectively





4.15 Distribution of Antiretroviral Treatment Prescribers NORTHERN Health Authority

HSDA of Prescriber Residency	# of Prescribers currently prescribing Antiretroviral Treatment	# of Participants currently treated by Prescribers	# of Prescribers ever prescribed Antiretroviral Treatment	# of Participants ever treated by Prescribers
NORTH EAST	2	*	37	50
NORTH WEST	16	*	93	176
NORTHERN INTERIOR	23	*	129	553
<b>Total:</b>	<b>41</b>	<b>232</b>	<b>259</b>	<b>779</b>

HSDA of Participant Residency	# of Participants with Prescriber out of HA/HSDA
NORTH EAST	9
NORTH WEST	29
NORTHERN INTERIOR	24
<b>Total:</b>	<b>62</b>

\* Participant values and corresponding data > 0 and < 5 are suppressed for privacy purposes.

**Currently prescribing Antiretroviral Treatment:** number of prescribers of antiretroviral treatment dispensed in the previous 6 months (based on participant HA/HSDA)

**Currently treated:** number of participants with antiretroviral treatment dispensed in the previous 6 months by antiretroviral treatment prescribers (based on follow-up prescriber HA/HSDA)

**Prescribers ever prescribed Antiretroviral Treatment:** for participants residing in HA/HSDA

**Participants ever treated by prescribers:** where follow-up prescriber is in the HA/HSDA

**Participants with Prescriber out of HA/HSDA:** participants residing in specified HA/HSDA with follow-up prescriber(s) in another HA/HSDA



**4.16 Distribution of Indigenous Participants by Health Service Delivery Area and Sex at Birth**

HA	HSDA	# Enrolled	# on ART	# First Starts	# CD4 Tested	Median CD4	# pVL Tested	Median pVL
INTERIOR	EAST KOOTENAY	*	*	0	*	*	*	*
	KOOTENAY BOUNDARY	*	*	0	*	*	*	*
	OKANAGAN	*	*	0	*	*	*	*
	THOMPSON/CARIBOO/SHUSWAP	*	*	0	*	*	*	*
	<b>Total HA:</b>	<b>52</b>	<b>48</b>	<b>0</b>	<b>45</b>	<b>540</b>	<b>41</b>	<b>&lt;40</b>
FRASER	FRASER EAST	31	25	0	26	620	27	<40
	FRASER NORTH	40	35	0	30	465	31	<40
	FRASER SOUTH	64	57	0	43	558	50	<40
	<b>Total HA:</b>	<b>135</b>	<b>117</b>	<b>0</b>	<b>99</b>	<b>520</b>	<b>108</b>	<b>&lt;40</b>
VANCOUVER COASTAL	NORTH SHORE/COAST GARIBALDI	29	26	0	24	786	25	<40
	RICHMOND	6	5	0	6	585	6	<40
	VANCOUVER	365	340	0	343	470	317	<40
	<b>Total HA:</b>	<b>400</b>	<b>371</b>	<b>0</b>	<b>373</b>	<b>500</b>	<b>348</b>	<b>&lt;40</b>
VANCOUVER ISLAND	CENTRAL VANCOUVER ISLAND	44	40	0	25	540	37	<40
	NORTH VANCOUVER ISLAND	16	15	0	11	550	9	<40
	SOUTH VANCOUVER ISLAND	43	40	0	15	550	32	<40
	<b>Total HA:</b>	<b>103</b>	<b>95</b>	<b>0</b>	<b>51</b>	<b>550</b>	<b>78</b>	<b>&lt;40</b>
NORTHERN	NORTH EAST	11	8	*	11	500	8	<40
	NORTH WEST	35	28	*	31	540	28	<40
	NORTHERN INTERIOR	64	54	*	59	570	47	<40
	<b>Total HA:</b>	<b>110</b>	<b>90</b>	<b>&lt;5</b>	<b>101</b>	<b>560</b>	<b>83</b>	<b>&lt;40</b>
<b>Total:</b>	<b>800</b>	<b>721</b>	<b>&lt;5</b>	<b>669</b>	<b>510</b>	<b>658</b>	<b>&lt;40</b>	

Sex at Birth	# Enrolled	# on Antiretroviral Treatment	# First Starts	# CD4 Tested	Median CD4	# pVL Tested	Median pVL
Male	501	460	*	418	501	412	<40
Female	299	261	*	251	530	246	<40
Unknown	0	0	*	0	N/A	0	N/A

Currently on antiretroviral treatment	# of Participants	Median Age	Median CD4	Median pVL
<b>Total:</b>	<b>721</b>	<b>55</b>	<b>530</b>	<b>&lt;40</b>

\* Participant values and corresponding data > 0 and < 5 are suppressed for privacy purposes.

# **Enrolled:** Participants who had enrolled in the HIV Treatment Program, but not known to be deceased or formally reported as moved out of program

# **on Antiretroviral Treatment:** defined as # of Participants being on antiretroviral treatment in the specified month

# **CD4 or pVL tested:** participants tested for CD4 or pVL within the past 12 months and 6 months, respectively (CD4 in cells/ $\mu$ L and pVL in copies/mL)





BRITISH COLUMBIA  
CENTRE *for* EXCELLENCE  
*in* HIV/AIDS

---

Funding for the BC Centre for Excellence in HIV/AIDS and HIV Drug Treatment Program provided in-part by:

