

Are you living with HIV in BC?



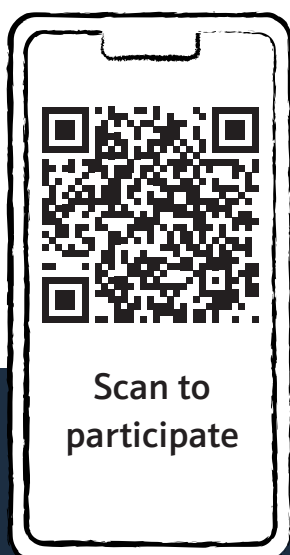
SHAPE
THE STOP HIV/AIDS PROGRAM EVALUATION STUDY



The new SHAPE survey (SHAPE 2.0) is now open and we want to hear from you!

Let us know about your recent experiences with HIV healthcare, treatment and services including what is working and what can be improved!

Complete your **online** survey today!
www.bccfe.ca/research/SHAPE



**A \$40 honorarium
will be provided for
completing the survey.**

You may be eligible to participate if you are:

- Living with HIV
- Currently reside in BC
- 19 years of age or older
- Can complete the survey in English

All you need is to fill out a **simple one-time survey** online, in-person, or over the phone.

For more information or to participate scan the QR code or go to www.bccfe.ca/research/SHAPE, call us at 1-855-506-8615, or email us at shape@bccfe.ca.



BRITISH COLUMBIA
CENTRE for EXCELLENCE
in HIV/AIDS



**Providence
Health Care**
How you want to be treated.



REB Number - H23-03366
PI: Dr. Kate Salters
Dr. Julio Montaner
Dr. David Moore

1081 Burrard Street • 625 Powell Street
www.bccfe.ca

Version 2.1 - Jan 14, 2025