



BRITISH COLUMBIA
CENTRE *for* EXCELLENCE
in HIV/AIDS

B.C. HIV/AIDS Drug Treatment Program

Monthly Report

May 2015





HIV/AIDS Drug Treatment Program

Monthly Report

© 2015 BC Centre for Excellence in HIV/AIDS

DISCLAIMER: This document is published by the British Columbia Centre for Excellence in HIV/AIDS (BC-CfE) as an overview of the activities of the BC-CfE's Drug Treatment Program. All information is generated from a live database maintained by the BC-CfE that houses data for clinical and virological outcome studies of patients receiving antiretroviral therapy.

This database is updated on a regular basis. Figures and tables provided in this Monthly Report represent the best estimates available at the time this document was generated.

Please be advised that information provided in this document is provided in good faith and is derived from sources believed to be accurate and up-to-date at the report's date of publication. The BC Centre for Excellence in HIV/AIDS nevertheless reserves the right to update this information at any time.

Information provided here at this time, is being provided freely, and no kind of agreement or contract is created between you and the authors. The authors cannot be responsible for any violations should you reproduce or republish the information contained herein.

Please note that the figures and graphs in this document are best viewed in colour.

BC Centre for Excellence in HIV/AIDS Drug Treatment Program

St. Paul's Hospital
608 - 1081 Burrard Street
Vancouver, BC
V6Z 1Y6

Tel: 604.682.8202
Fax: 604.806.9044

Physician Drug Hotline: 1.800.665.7677
St. Paul's Hospital Pharmacy Hotline: 1.888.511.6222
Website: www.cfenet.ubc.ca
Email: info@cfenet.ubc.ca

Funding for the BC Centre for Excellence in HIV/AIDS is provided through Pharmacare and the Provincial Health Services Authority (PHSA)



BRITISH COLUMBIA
CENTRE for EXCELLENCE
in HIV/AIDS



This document is best viewed in colour.
Drug definitions available in the back.



EXECUTIVE SUMMARY

A key component of the BC Centre for Excellence in HIV/AIDS' (BC-CfE) mandate is to monitor the impact of HIV/AIDS in British Columbia. The BC-CfE provides essential information to local health authorities, treating physicians, and the community at large on an ongoing basis. The HIV/AIDS Drug Treatment Program (DTP) Update is one example of the BC-CfE's commitment to HIV-infected persons throughout the Province of British Columbia.

The DTP distributes anti-HIV drugs at no cost to eligible British Columbians. The DTP Update provides an important overview of available anti-HIV drugs, common drug combinations and distribution of active DTP participants throughout the province.

DTP participants are typically followed at three-monthly intervals at which time routine blood sampling is performed. Information from all recipients is entered into a database, providing data for clinical and virological outcome studies of patients receiving antiretroviral therapy. These studies form the basis of ongoing revisions to the BC-CfE's treatment guidelines.





TABLE OF CONTENTS

1. List of Figures

- 1.1 Distribution of men and women on antiretroviral therapy in British Columbia by Health Authority
- 1.2 Distribution of Participants in HIV/AIDS Drug Treatment Program by Regimen Class
- 1.3 Percent Distribution of Participants in HIV/AIDS Drug Treatment Program by Regimen Class
- 1.4 BC-CfE Enrolment: Net Number of New Antiretroviral Participants
- 1.5 BC-CfE Enrolment: New Antiretroviral Participants
- 1.6 Percent Distribution of Active Participants by CD4 Count
- 1.7 Percent Distribution of Inactive Participants by CD4 Count
- 1.8 Active and Inactive Participants
- 1.9 Percent Distribution of Participants on ARV Therapy by Number of Drugs
- 1.10 Distribution of Participants on Nucleoside/Nucleotide Analogues by Ingredient
- 1.11 Distribution of Participants on Nucleoside/Nucleotide Analogues at the time of first start of ARV Therapy by Ingredient
- 1.12 Distribution of Participants on Protease Inhibitor by Ingredient
- 1.13 Distribution of Participants on Protease Inhibitor at the time of first start of ARV Therapy by Ingredient
- 1.14 Distribution of Participants on Non-Nucleosides by Ingredient
- 1.15 Distribution of Participants on Non-Nucleosides at the time of first start of ARV Therapy by Ingredient
- 1.16 Distribution of Participants on Entry/Integrase Inhibitors by Ingredient
- 1.17 Distribution of Participants on Entry/Integrase Inhibitors at the time of first start of ARV Therapy by Ingredient
- 1.18 Baseline CD4 for Antiretroviral First Starts
- 1.19 DTP Participants with PVL Measurement within previous five years, and never on ART
- 1.20 Cumulative Resistance Testing Results by Resistance Category
- 1.21 Percent of Participants ever on ARV - Resistance Testing Results by Resistance Category

2. List of Tables

- 2.1 Duration of ARV treatment in the Province of BC, 1987-2012 (for HIV+ persons currently on treatment)
- 2.2 Median Viral Load and CD4 for Active patients in Drug Treatment Program
- 2.3 Median Viral Load and CD4 for Inactive patients in Drug Treatment Program
- 2.4 BC-CfE Enrolment
- 2.5 Percent Distribution of Participants on ARV Therapy by Number of Drugs
- 2.6 Number of Participants on Nucleoside/Nucleotide Analogues by Ingredient
- 2.7 Number of Participants on Protease Inhibitor by Ingredient
- 2.8 Number of Participants on Non-Nucleosides by Ingredient
- 2.9 Number of Participants on Entry/Integrase Inhibitors by Ingredient
- 2.10 Distribution of Participants in HIV/AIDS Drug Treatment Program by Regimen Class
- 2.11 Baseline CD4 for Antiretroviral First Starts
- 2.12 DTP Participants with PVL Measurement within previous five years, and never on ART





Table of Contents, cont'd...

3. Health Authority Maps

- 3.1 Distribution of HIV/AIDS Drug Treatment Program Active Participants
- 3.2 Interior Health Authority & Kelowna
- 3.3 Fraser Health Authority & Surrey
- 3.4 Vancouver Coastal Health Authority & Vancouver
- 3.5 Vancouver Island Health Authority & Victoria
- 3.6 Northern Health Authority & Prince George

4. Health Authority Tables

INTERIOR HEALTH

- 4.1 Distribution of Participants in BC-CfE Registries by Age and Gender
- 4.2 Distribution of Participants in BC-CfE Registries by Treatment Duration
- 4.3 Distribution of ARV Prescribing Physicians in BC-CfE Registries

FRASER HEALTH

- 4.4 Distribution of Participants in BC-CfE Registries by Age and Gender
- 4.5 Distribution of Participants in BC-CfE Registries by Treatment Duration
- 4.6 Distribution of ARV Prescribing Physicians in BC-CfE Registries

VANCOUVER COASTAL

- 4.7 Distribution of Participants in BC-CfE Registries by Age and Gender
- 4.8 Distribution of Participants in BC-CfE Registries by Treatment Duration
- 4.9 Distribution of ARV Prescribing Physicians in BC-CfE Registries

VANCOUVER ISLAND

- 4.10 Distribution of Participants in BC-CfE Registries by Age and Gender
- 4.11 Distribution of Participants in BC-CfE Registries by Treatment Duration
- 4.12 Distribution of ARV Prescribing Physicians in BC-CfE Registries

NORTHERN HEALTH

- 4.13 Distribution of Participants in BC-CfE Registries by Age and Gender
- 4.14 Distribution of Participants in BC-CfE Registries by Treatment Duration
- 4.15 Distribution of ARV Prescribing Physicians in BC-CfE Registries

ABORIGINAL

- 4.16 Distribution of Aboriginal Participants in BC-CfE Registries by Health Service Delivery Area and Gender

5. Appendix

- 5.1 Drug Names and Definitions

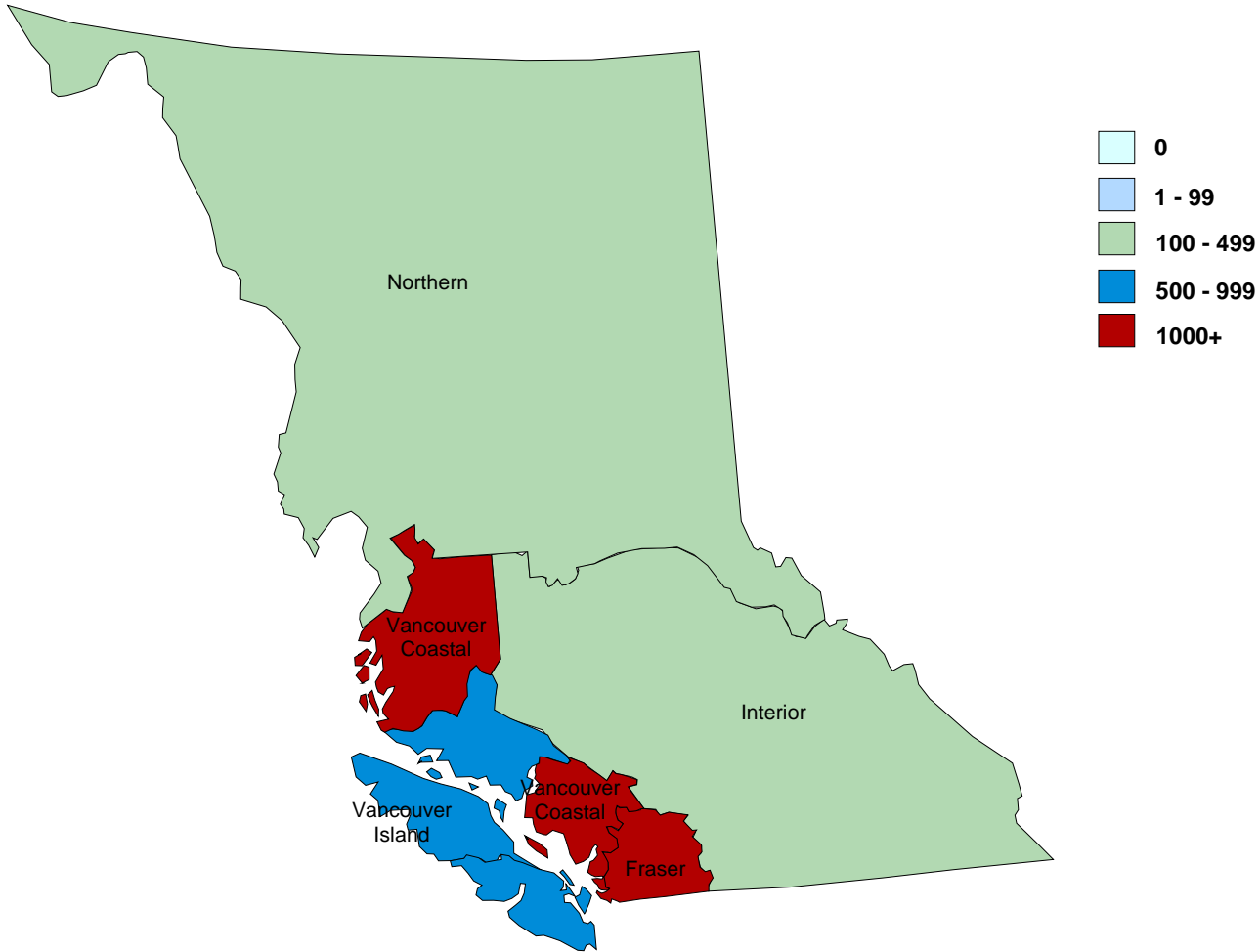




1.1 Distribution of men and women on antiretroviral therapy in British Columbia by Health Authority

May 2015

N = 6896



Health Authority	Male	Female	All
FRASER	1275	385	1660
INTERIOR	343	93	436
NORTHERN	136	77	213
VANCOUVER COASTAL	3333	439	3772
VANCOUVER ISLAND	642	150	792
	5729	1144	6873
		Unknown/not stated:	23
		Total:	6896

Definitions:

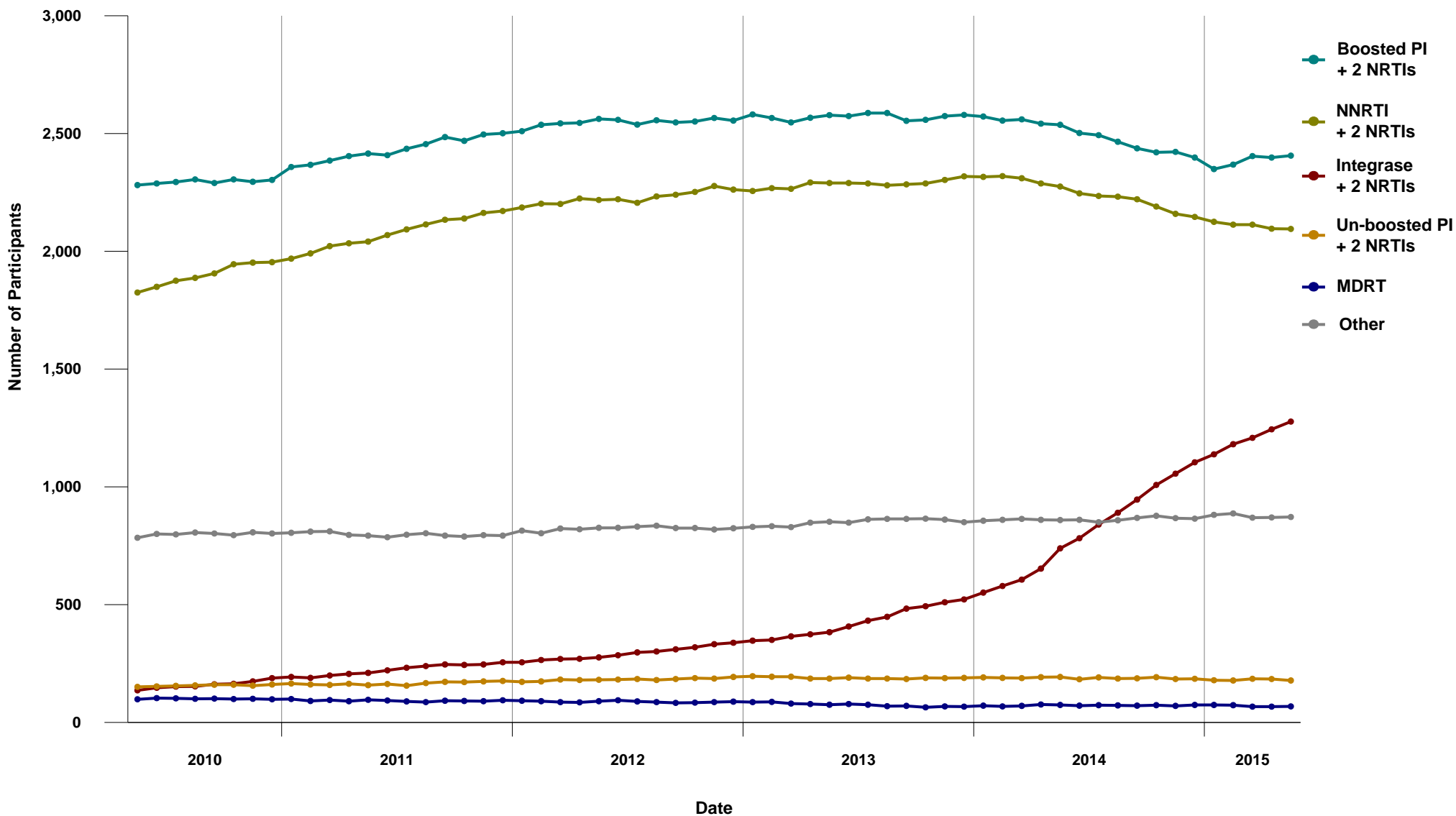
On antiretroviral therapy defined as being on treatment in the current month

Unknown/not stated defined as being on treatment in the current month, and city of residence unknown



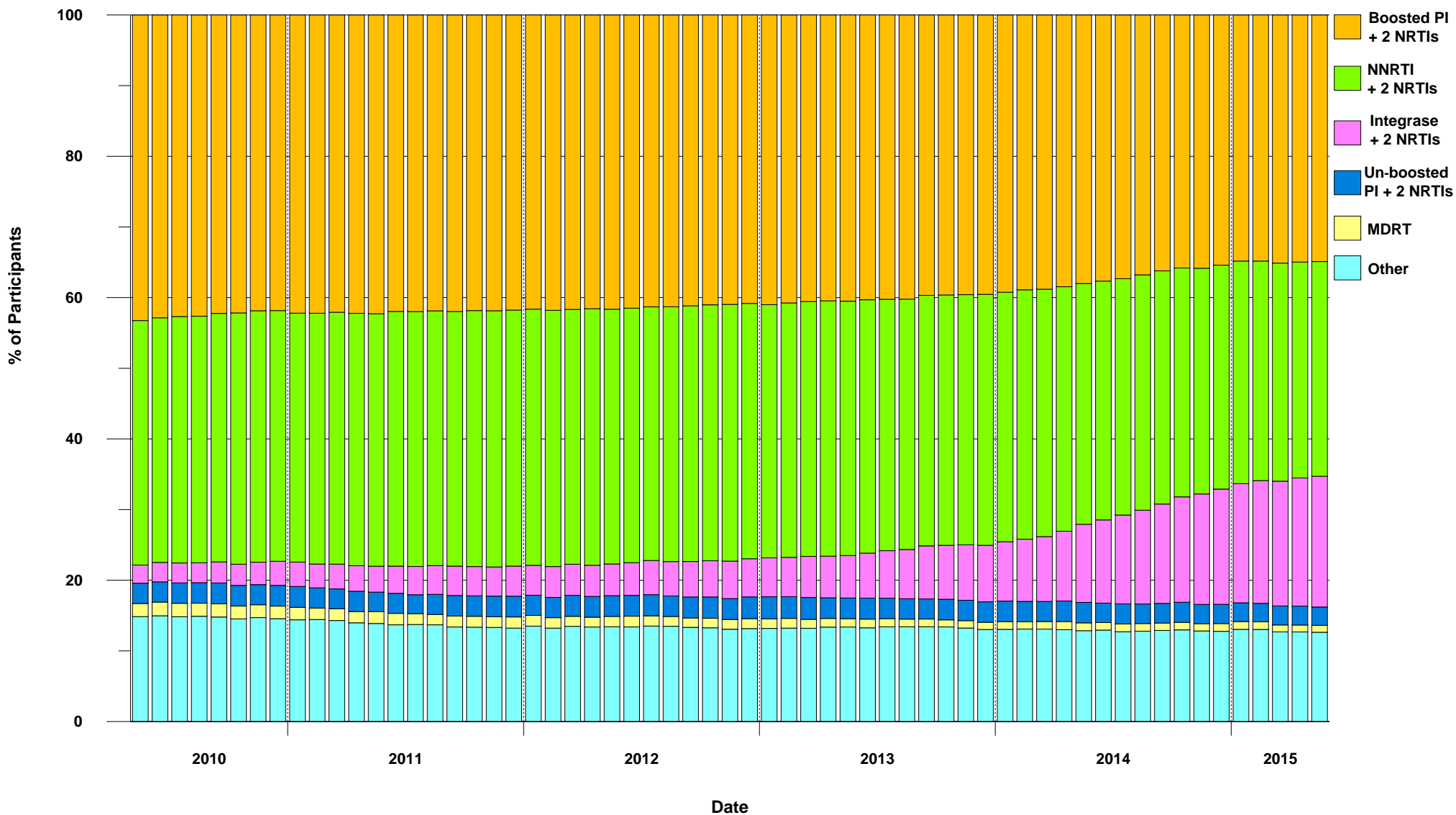


1.2 Distribution of Participants in HIV/AIDS Drug Treatment Program by Regimen Class (May 2010 - May 2015)



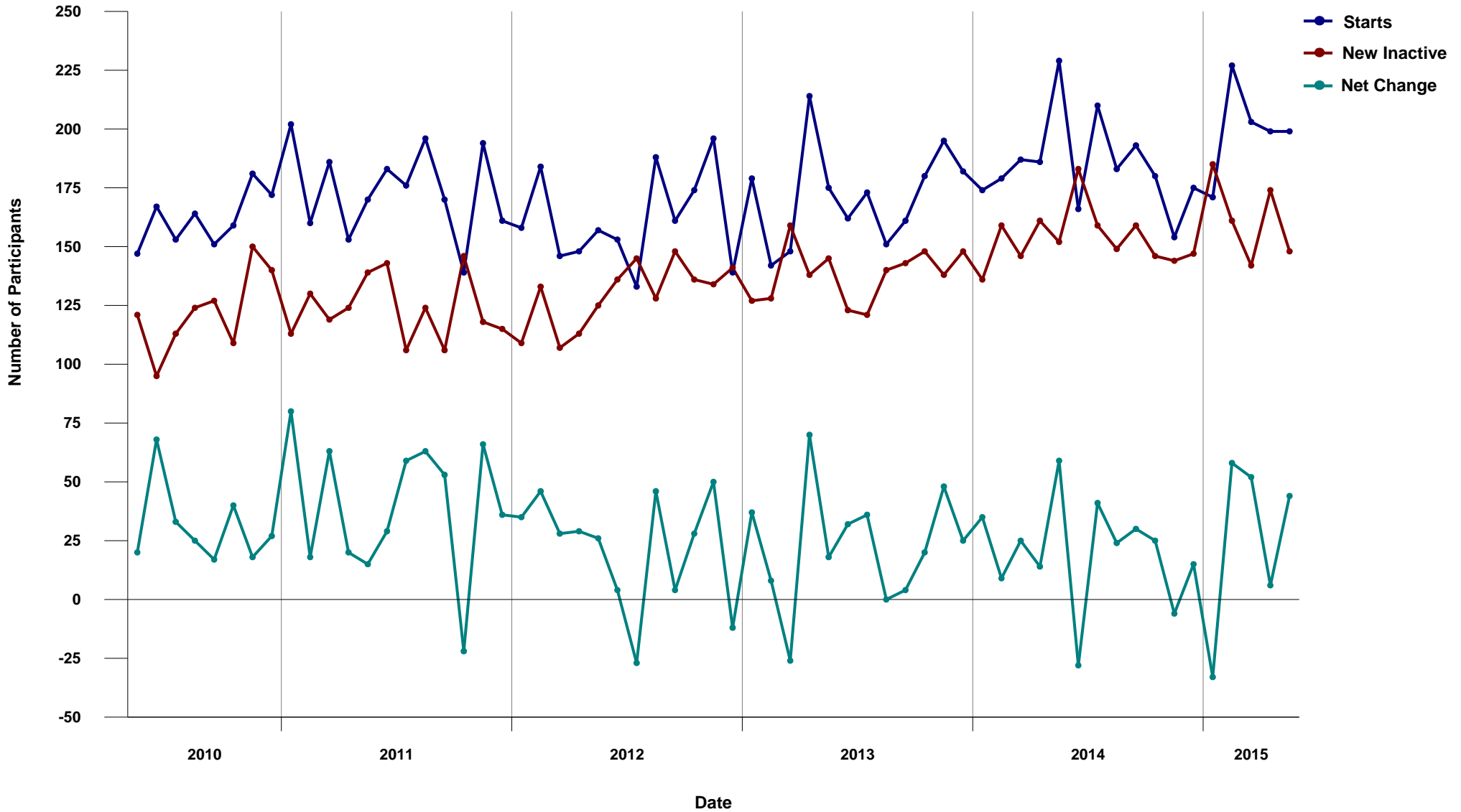


1.3 Percent Distribution of Participants in HIV/AIDS Drug Treatment Program by Regimen Class (May 2010 - May 2015)



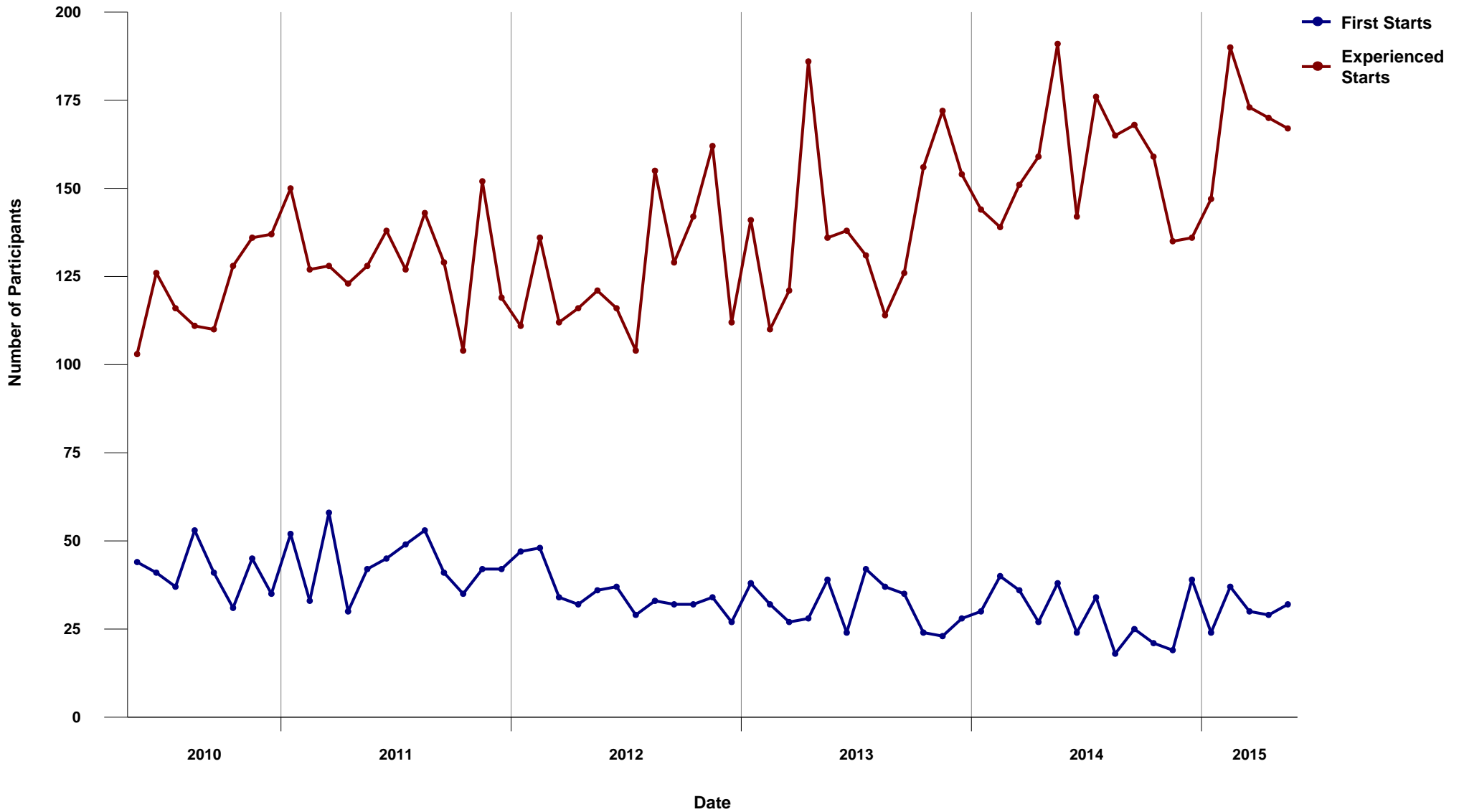


1.4 BC-CfE Enrollment: Net Number of New Antiretroviral Participants (May 2010 - May 2015)



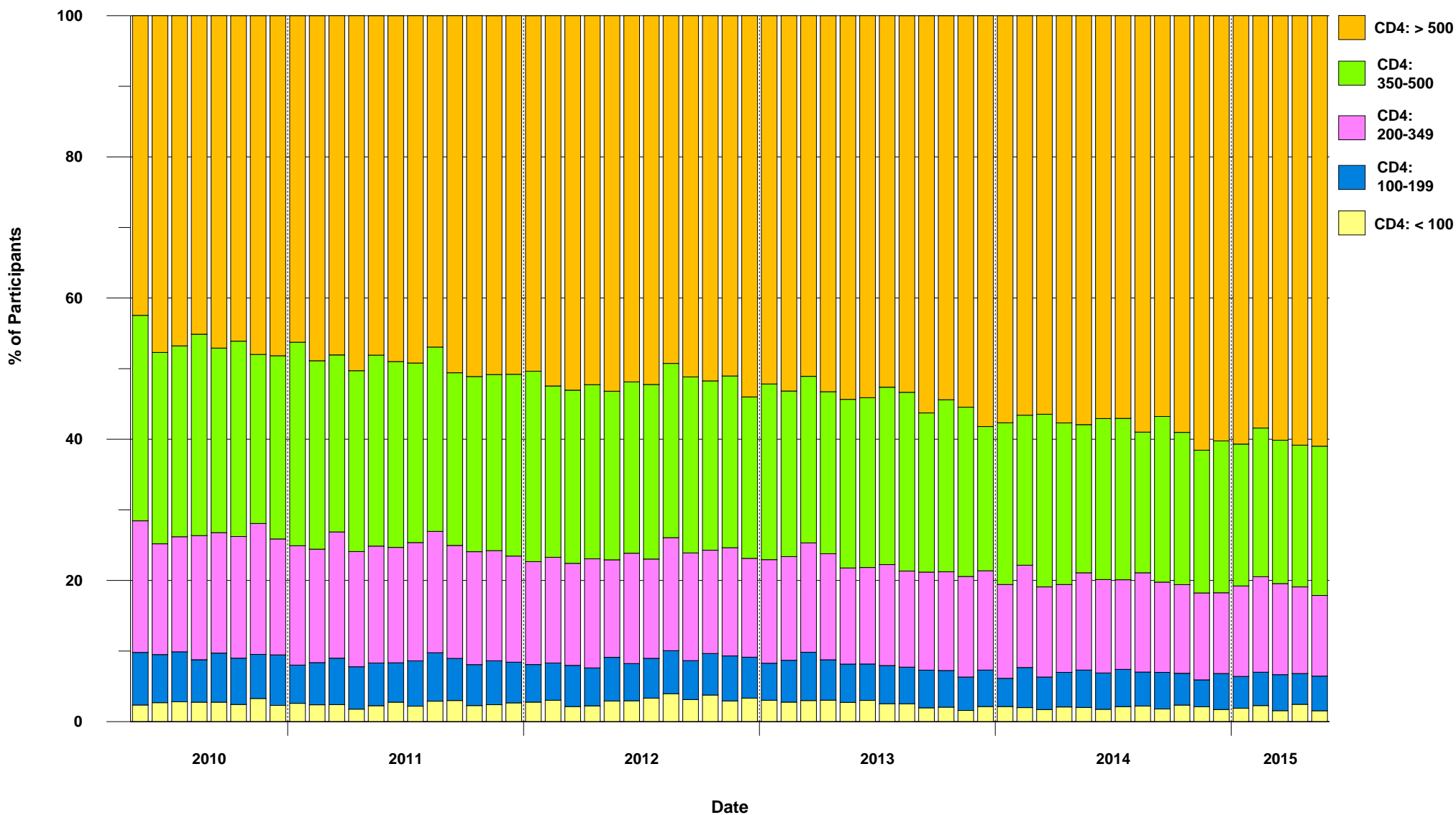


1.5 BC-CfE Enrollment: New Antiretroviral Participants (May 2010 - May 2015)



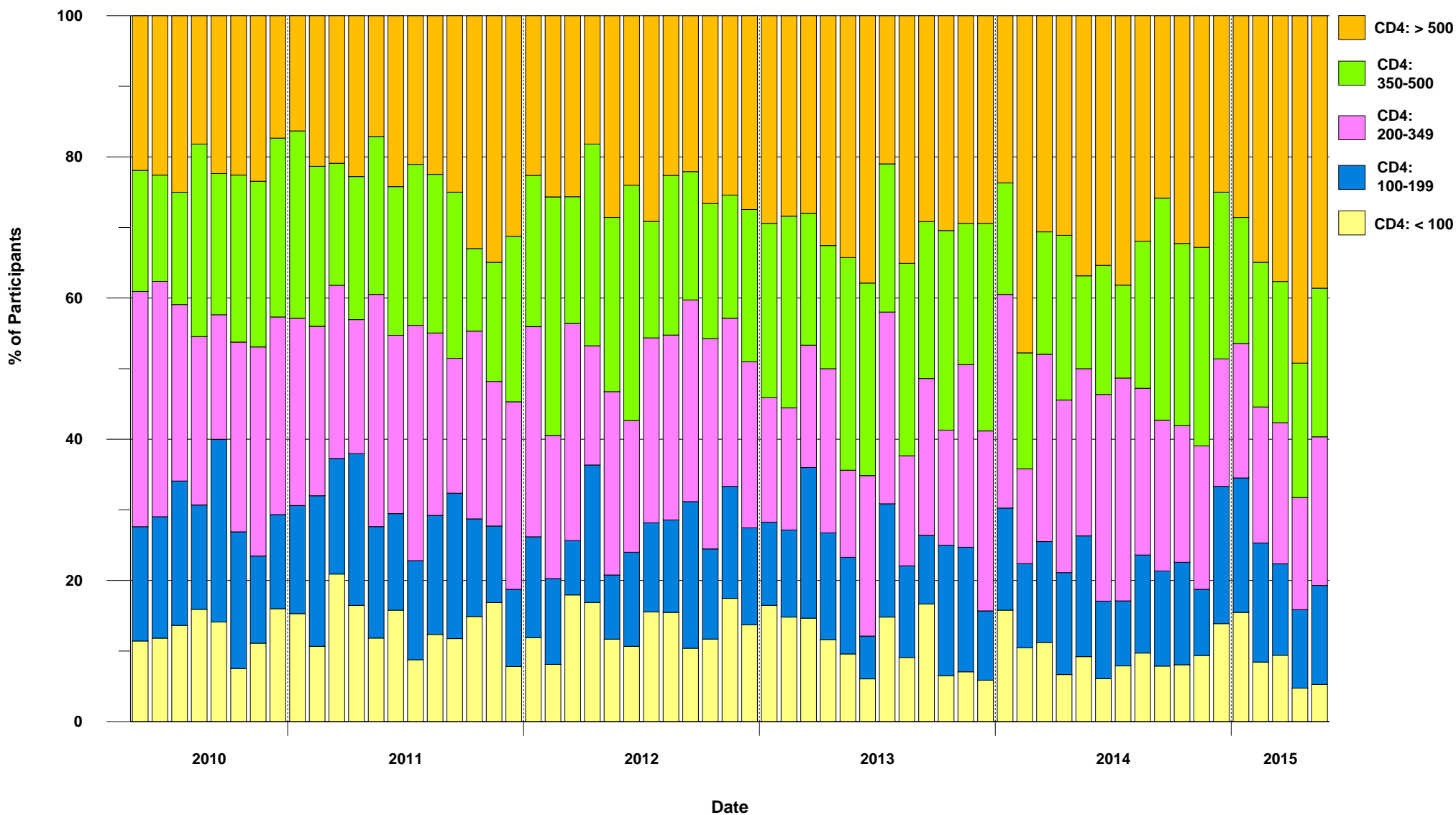


1.6 Percent Distribution of Active Participants by CD4 Count (May 2010 - May 2015)



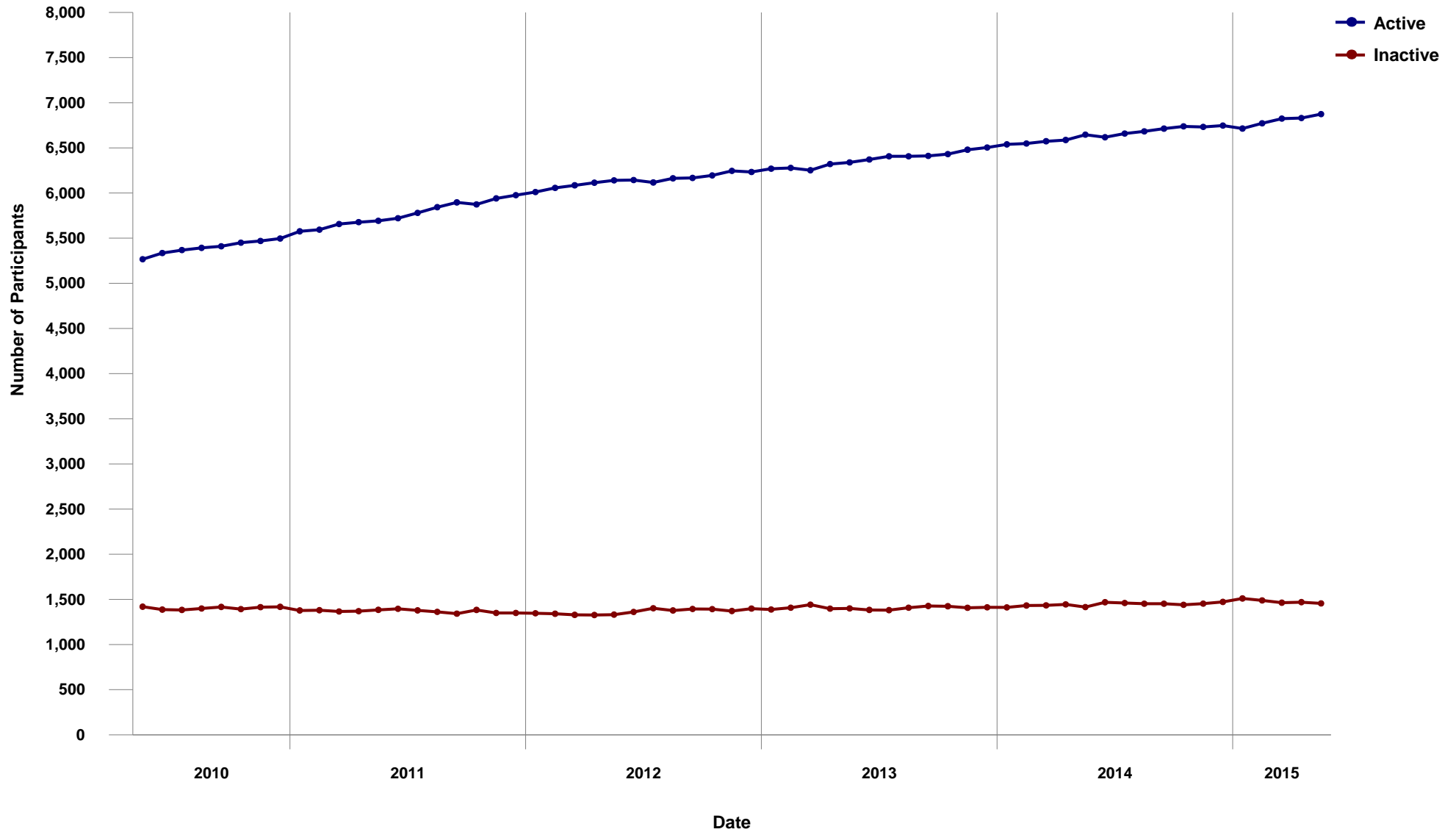


1.7 Percent Distribution of Inactive Participants by CD4 Count (May 2010 - May 2015)



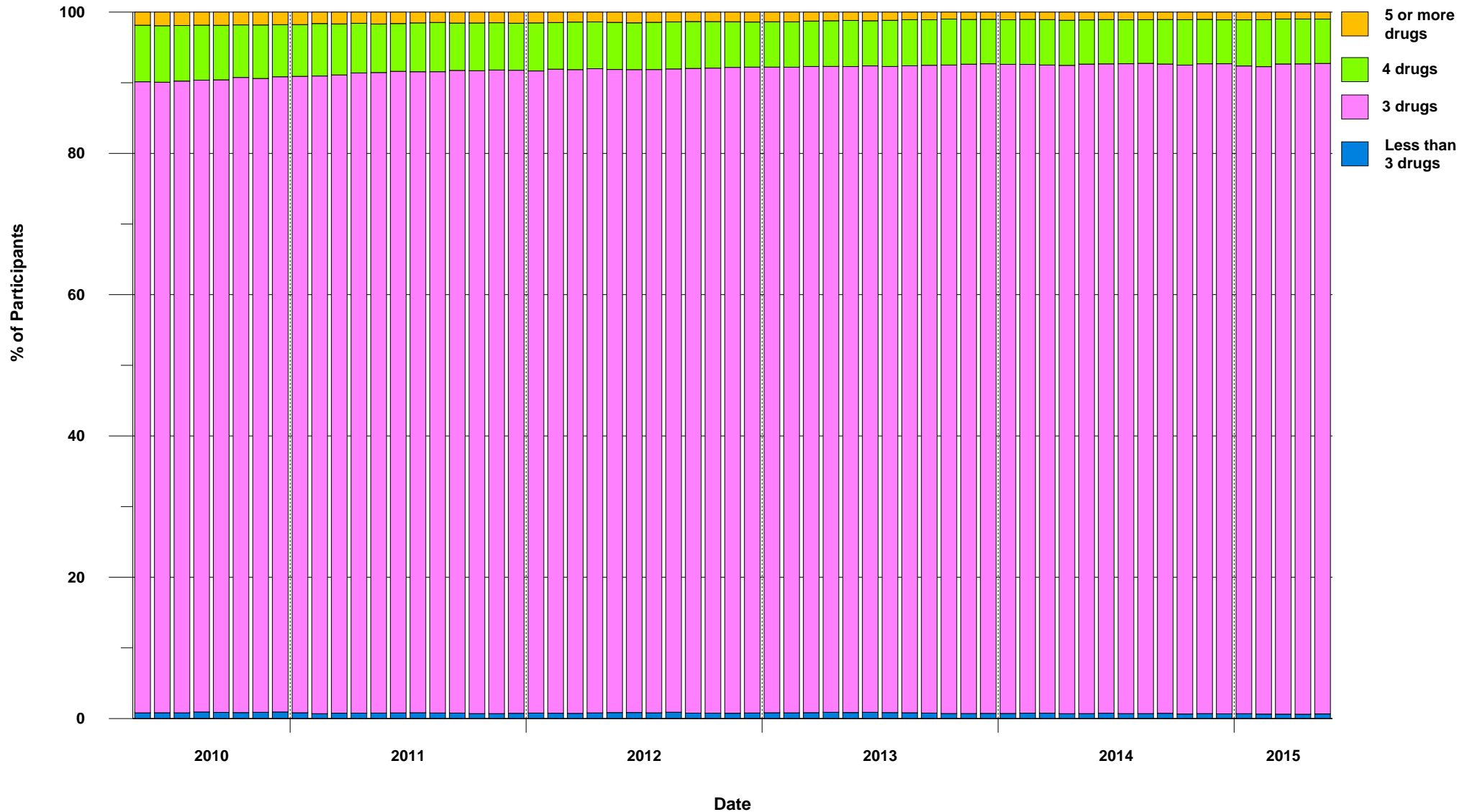


1.8 Active and Inactive Participants (May 2010 - May 2015)



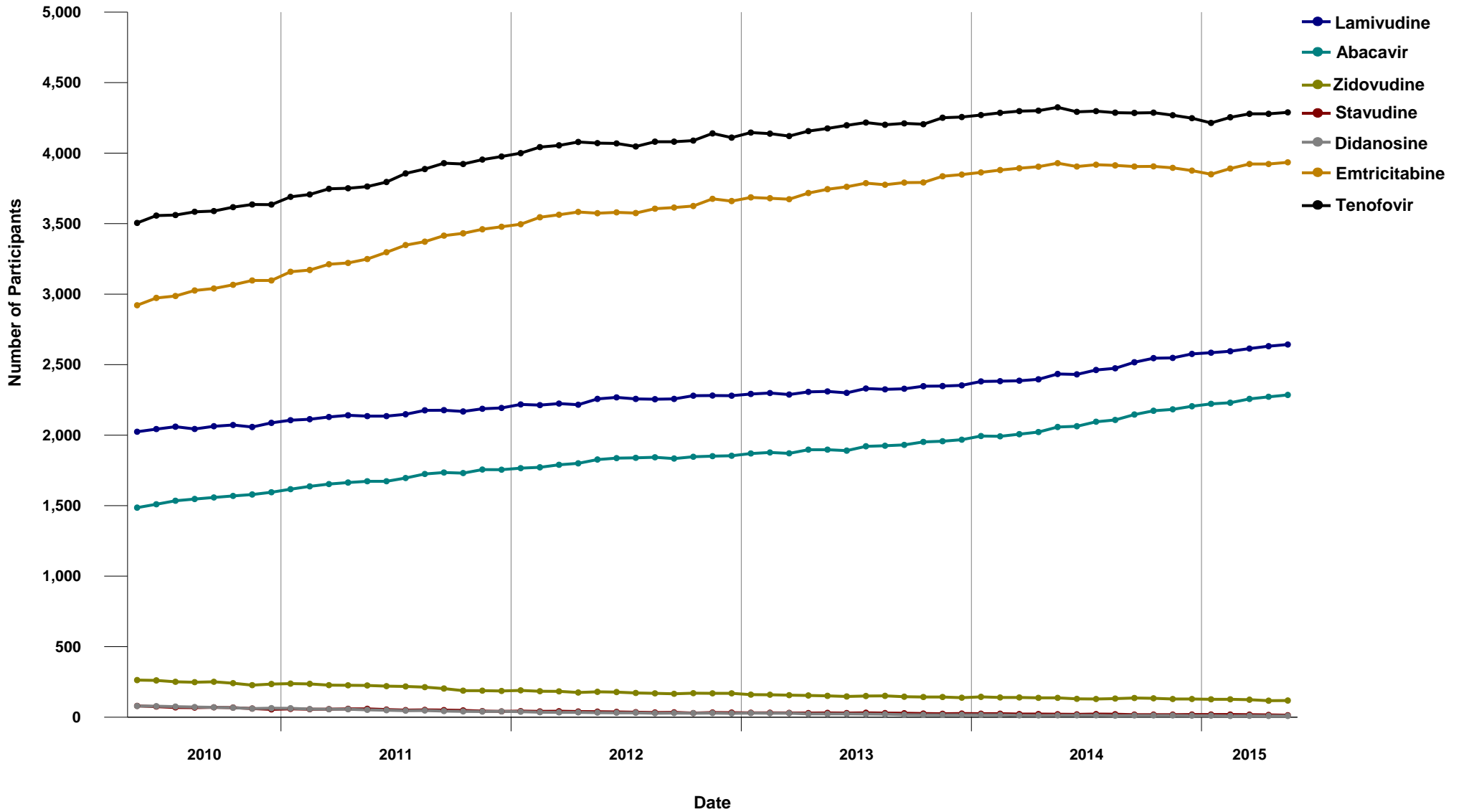


1.9 Percent Distribution of Participants on ARV Therapy by Number of Drugs (May 2010 - May 2015)





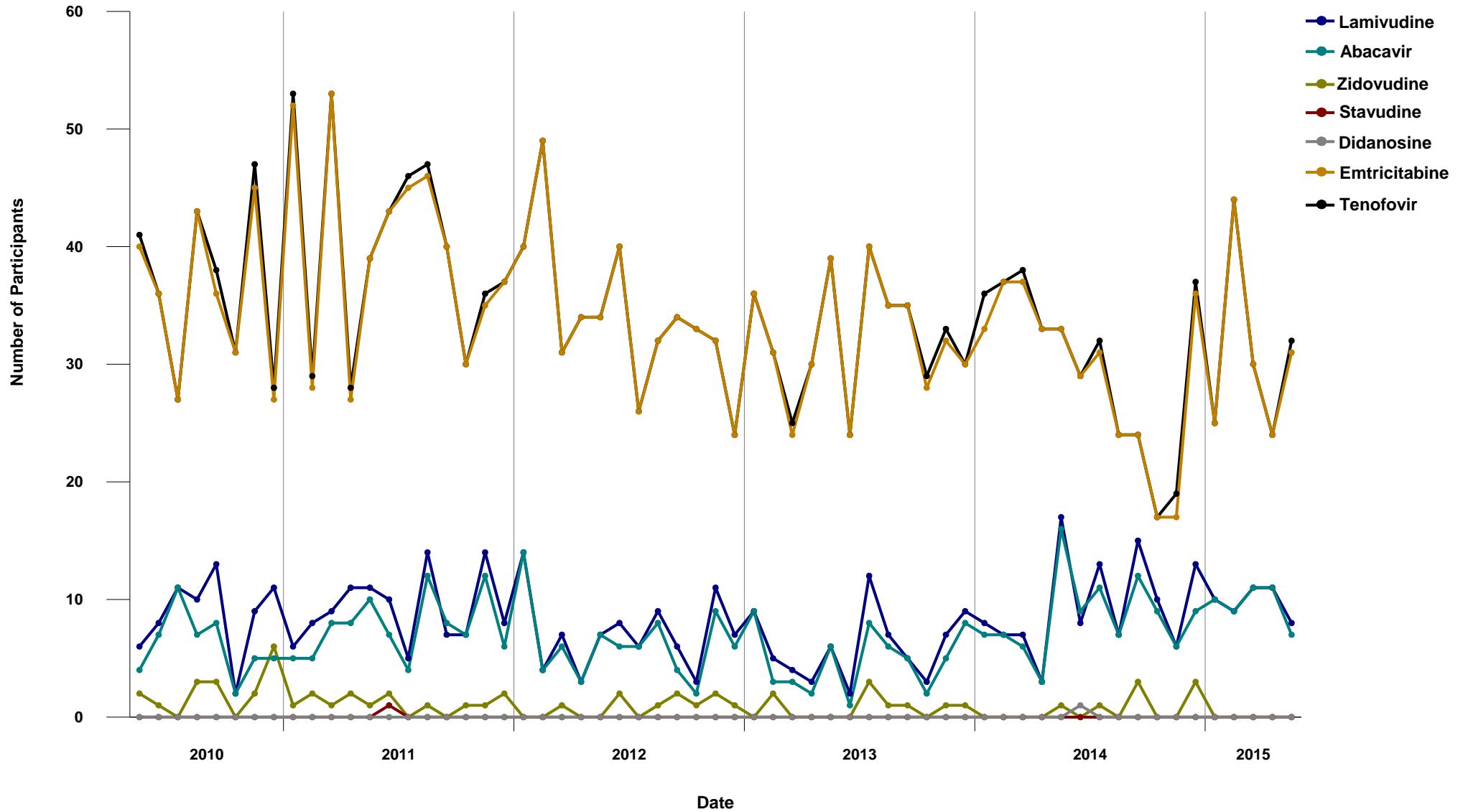
1.10 Distribution of Participants on Nucleoside/Nucleotide Analogues by INGREDIENT (May 2010 - May 2015)





1.11 Distribution of Participants on Nucleoside/Nucleotide Analogues at the time of first start of ARV Therapy by INGREDIENT

(May 2010 - May 2015)





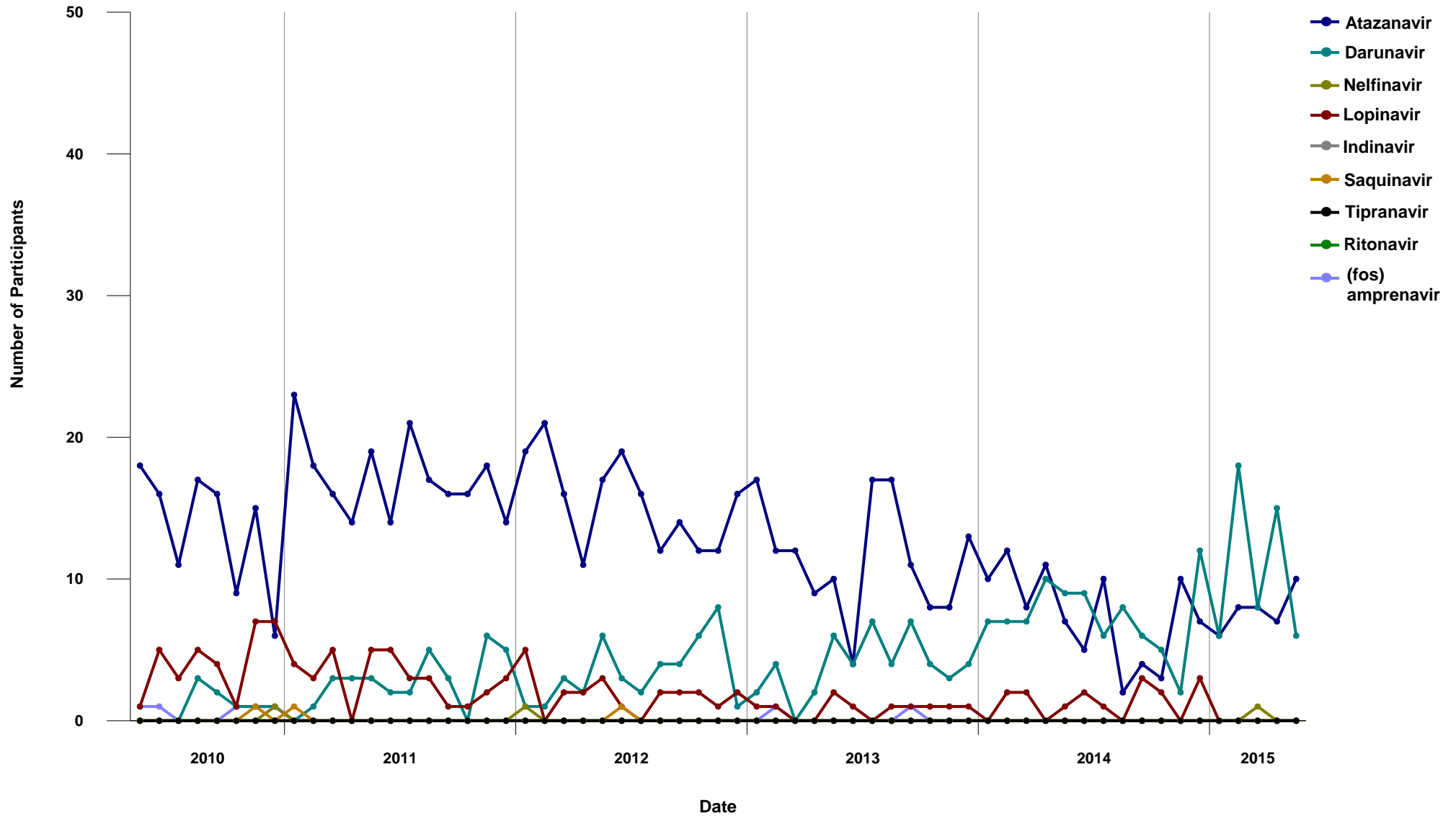
1.12 Distribution of Participants on Protease Inhibitor by INGREDIENT
(May 2010 - May 2015)





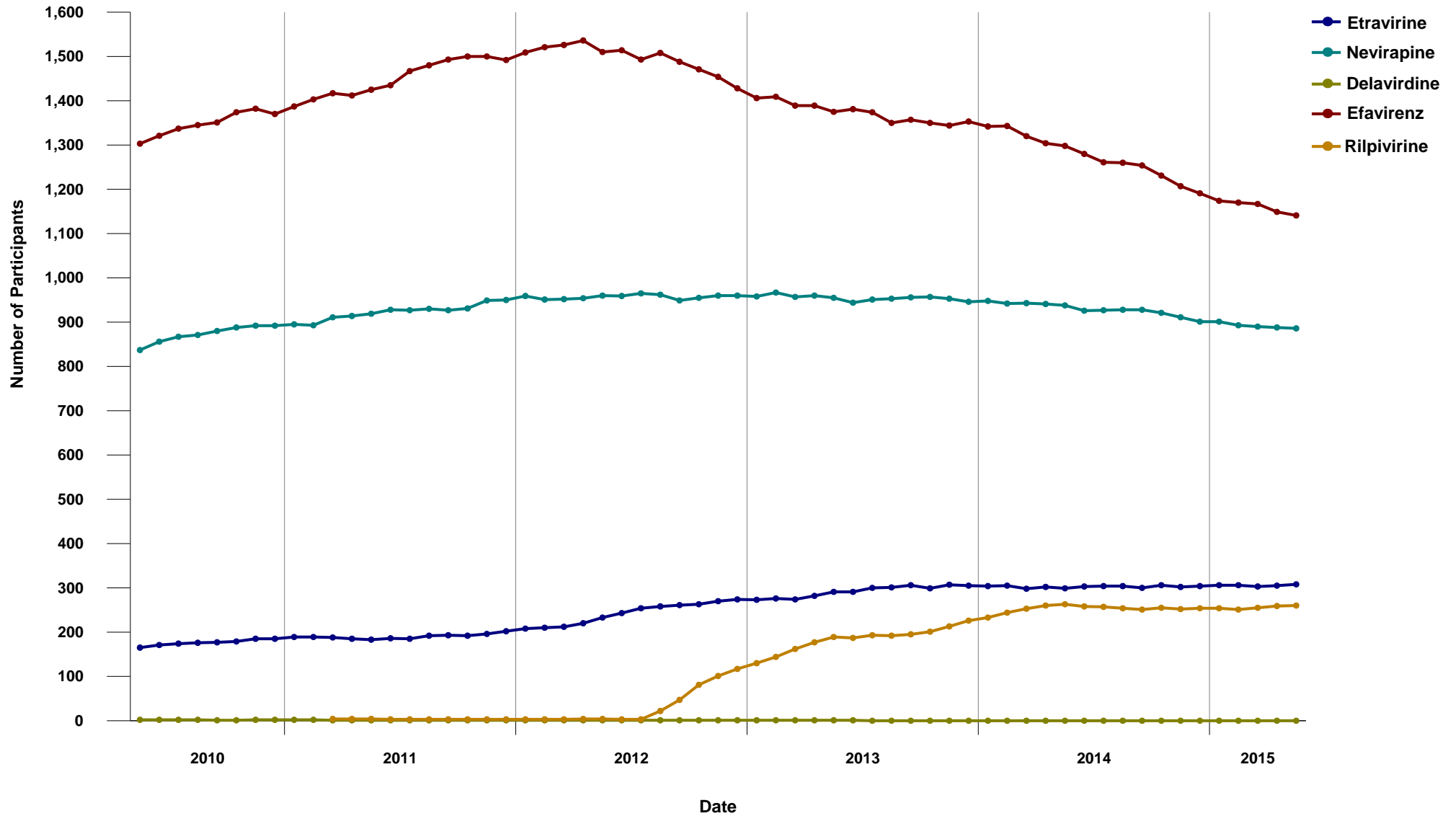
1.13 Distribution of Participants on Protease Inhibitor at the time of first start of ARV Therapy by INGREDIENT

(May 2010 - May 2015)





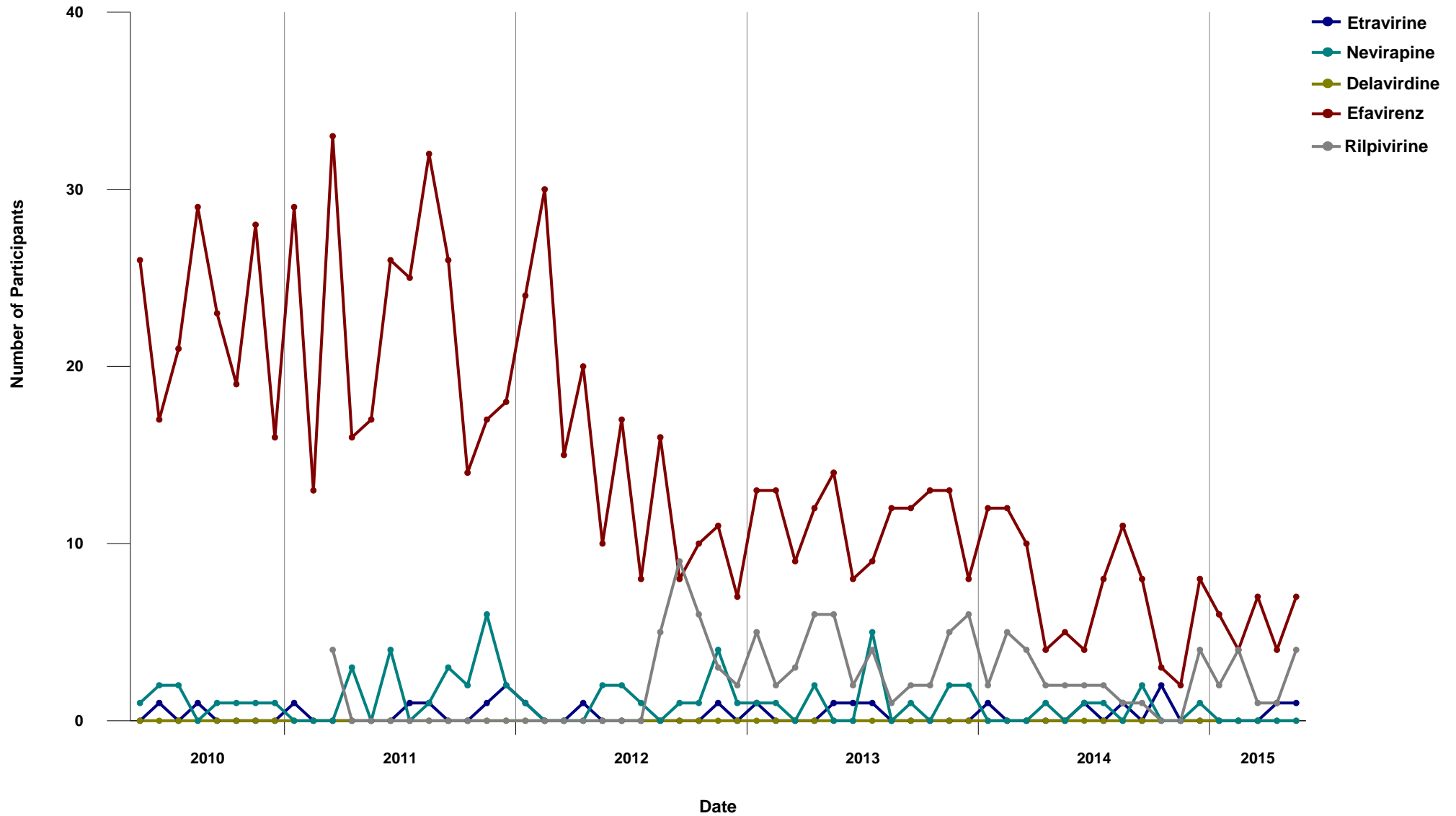
1.14 Distribution of Participants on Non-Nucleosides by INGREDIENT (May 2010 - May 2015)





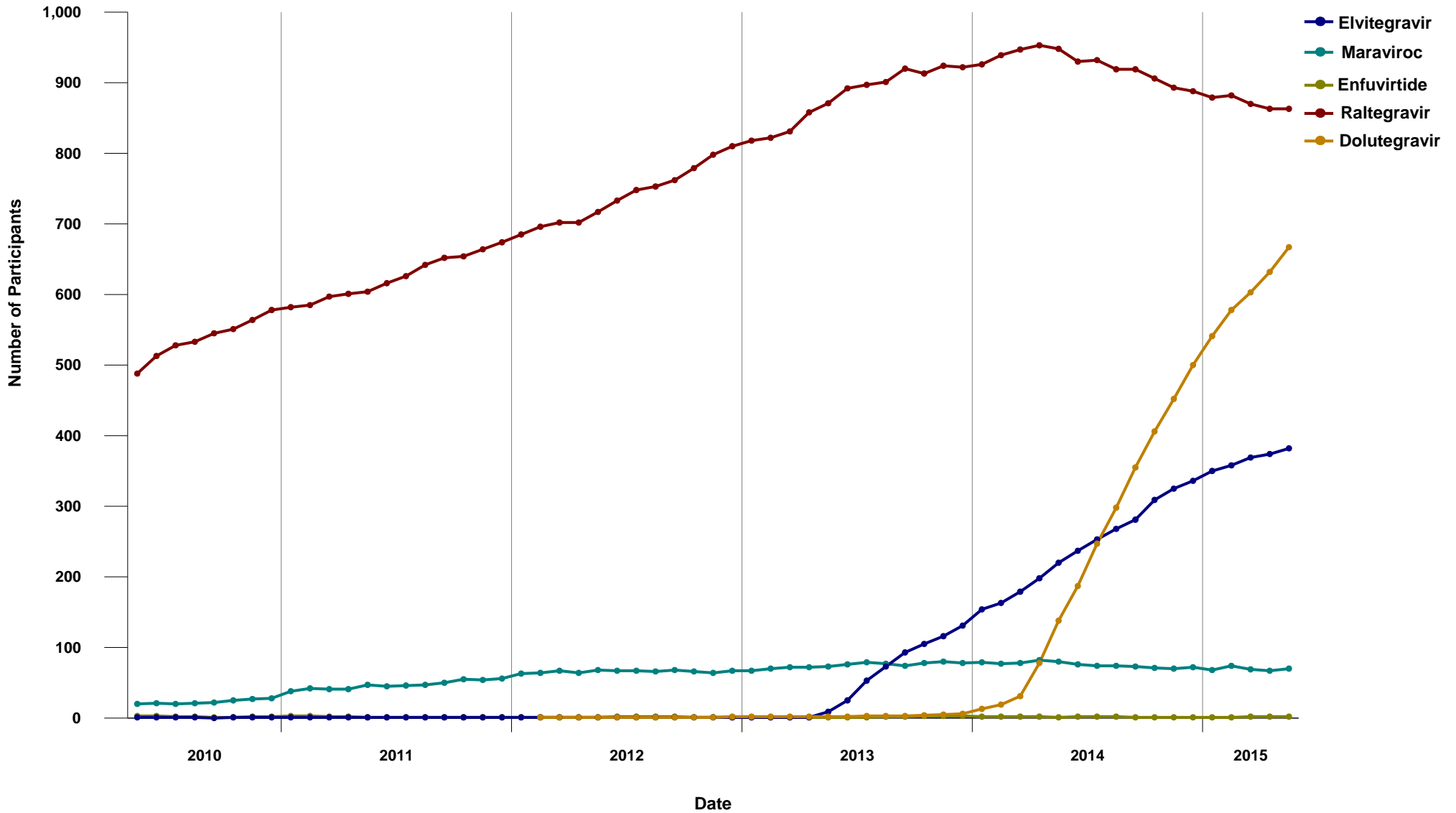
1.15 Distribution of Participants on Non-Nucleosides at the time of first start of ARV Therapy by INGREDIENT

(May 2010 - May 2015)





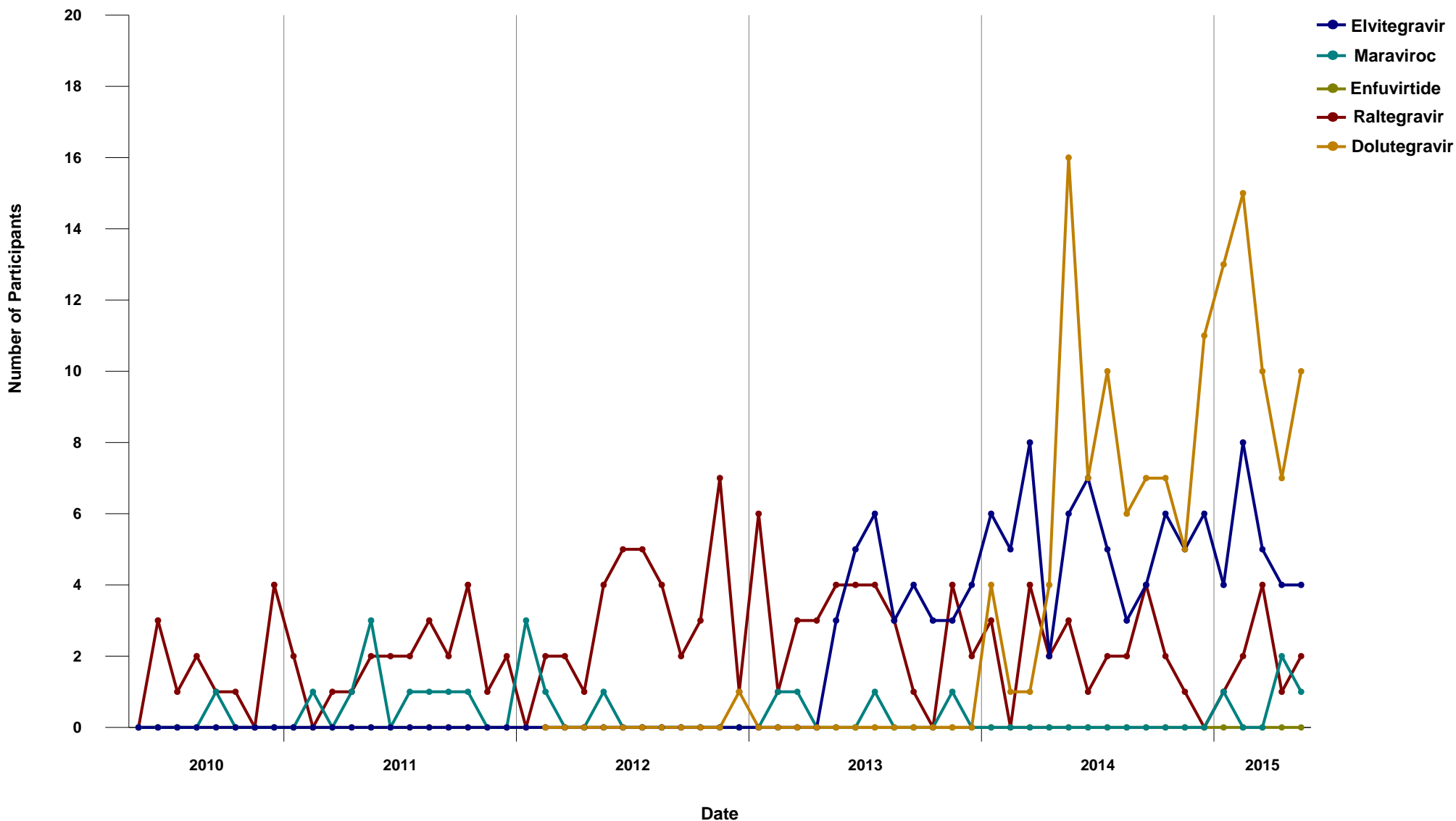
1.16 Distribution of Participants on Entry/Integrase Inhibitors by INGREDIENT (May 2010 - May 2015)





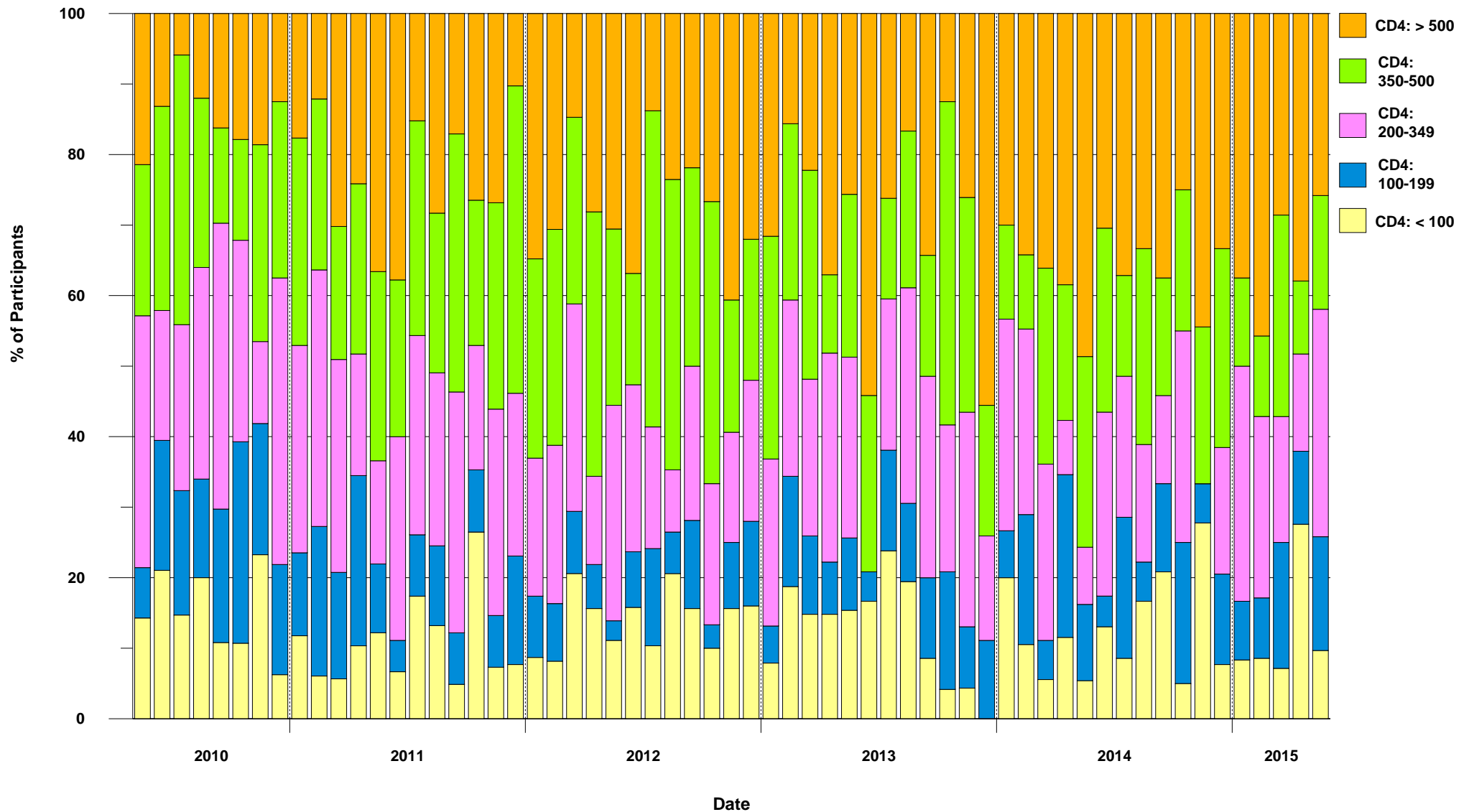
1.17 Distribution of Participants on Entry/Integrase Inhibitors at the time of first start of ARV Therapy by INGREDIENT

(May 2010 - May 2015)



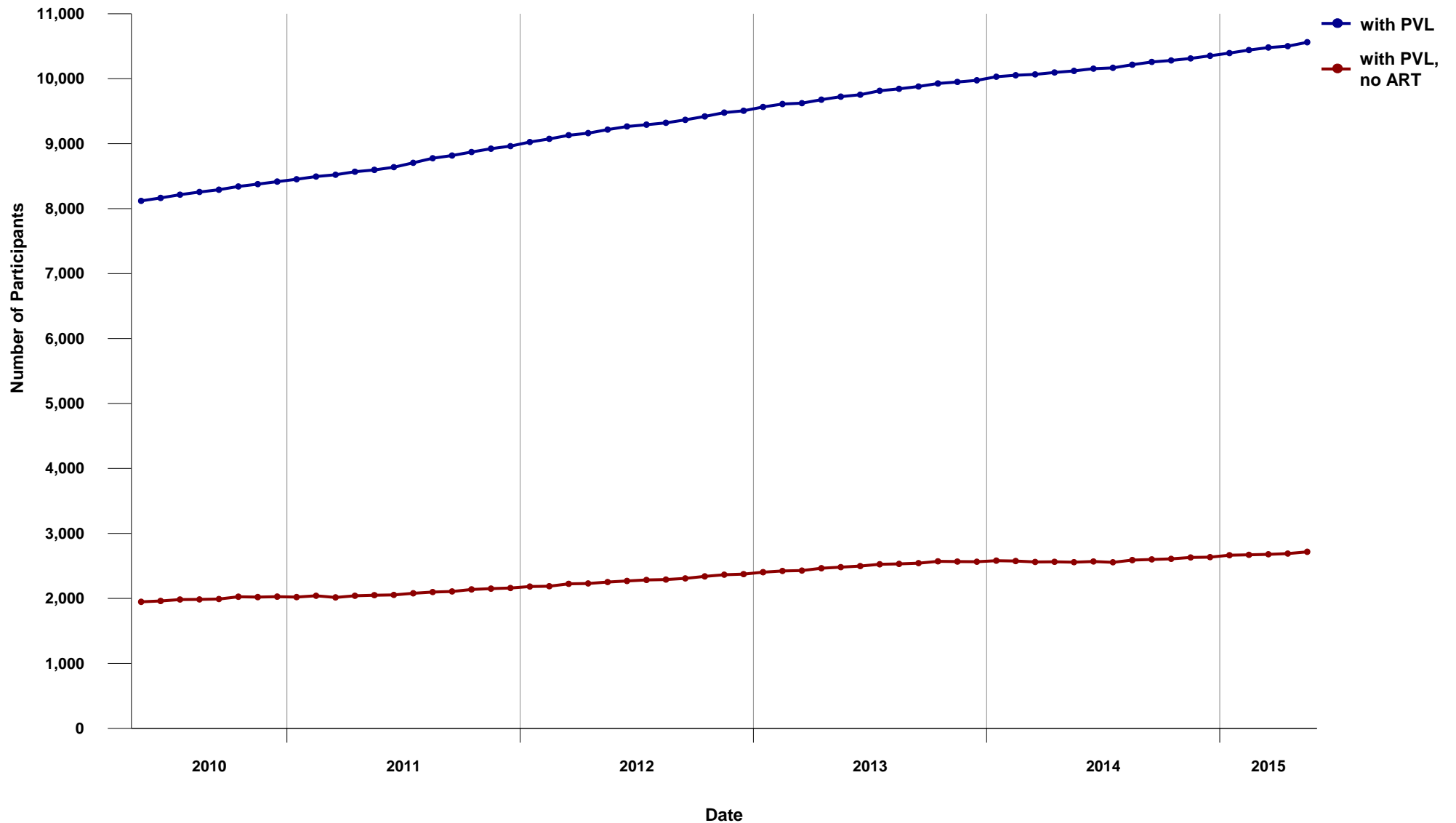


1.18 Baseline CD4 for Antiretroviral First Starts (May 2010 - May 2015)



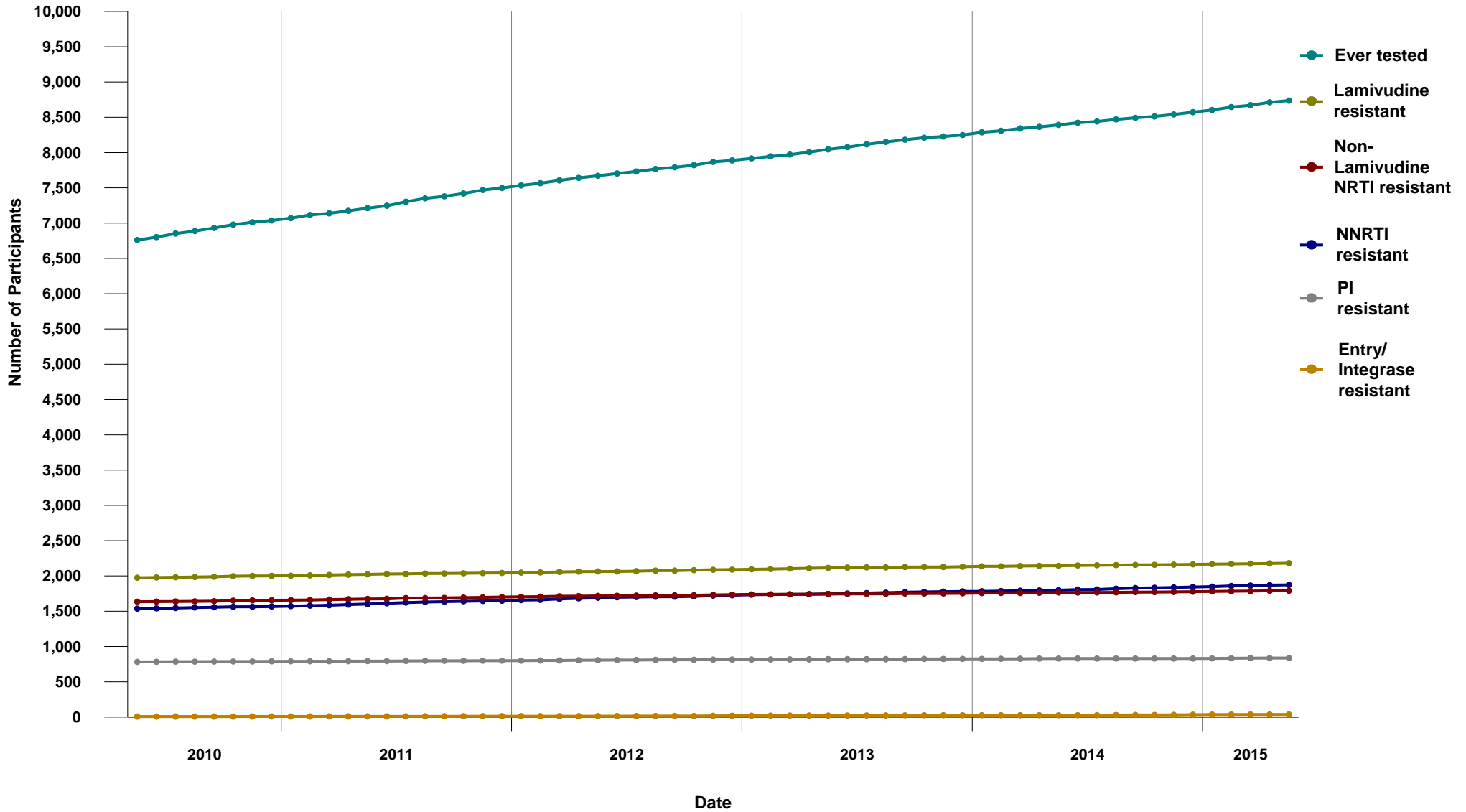


1.19 DTP Participants with PVL Measurement within previous five years, and never on ART
(May 2010 - May 2015)



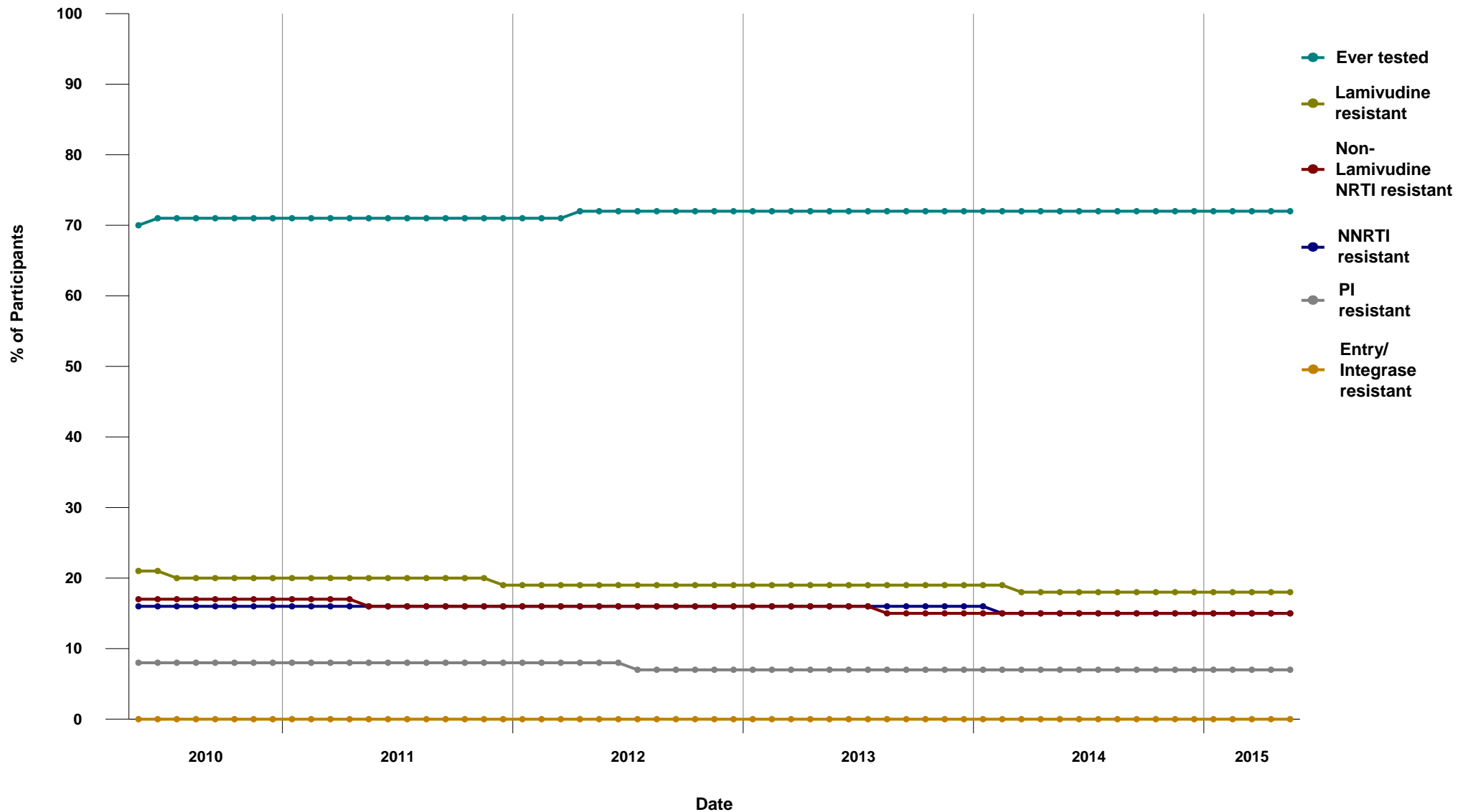


1.20 Cumulative Resistance Testing Results by Resistance Category (May 2010 - May 2015)





1.21 Percent of Participants ever on ARV - Resistance Testing Results by Resistance Category (May 2010 - May 2015)





2.1 Duration of ARV treatment in the Province of BC, 1987-2015 (for HIV+ persons currently on treatment)

Start Year	Duration (years) Median	Male	Female	All	Current CD4 (n)	Median	Current PVL (n)	Median	Current ARV Median
1987	23	5	0	5	5	800	5	<40	4
1988	23	7	0	7	7	490	7	<40	4
1989	22	56	2	58	54	500	57	<40	4
1990	21	64	1	65	60	530	64	<40	4
1991	21	39	3	42	35	530	41	<40	4
1992	21	68	7	75	57	550	74	<40	4
1993	20	149	15	164	147	560	159	<40	4
1994	19	97	12	109	91	530	104	<40	4
1995	18	127	27	154	127	570	147	<40	4
1996	16	377	60	437	367	560	427	<40	4
1997	15	319	39	358	322	560	349	<40	3
1998	14	222	45	267	226	540	259	<40	3
1999	14	187	44	231	193	540	219	<40	3
2000	14	138	40	178	154	565	169	<40	3
2001	13	135	40	175	146	530	171	<40	3
2002	12	141	33	174	144	545	165	<40	3
2003	12	178	35	213	183	590	207	<40	3
2004	11	179	47	226	189	550	212	<40	3
2005	10	212	50	262	226	595	255	<40	4
2006	9	223	51	274	218	540	258	<40	3
2007	8	288	54	342	286	570	327	<40	3
2008	7	327	77	404	334	620	388	<40	3
2009	6	363	79	442	376	645	424	<40	3
2010	5	320	77	397	328	620	377	<40	3
2011	4	377	76	453	384	620	427	<40	3
2012	3	322	71	393	335	650	383	<40	3
2013	2	308	72	380	314	590	371	<40	3
2014	1	335	60	395	333	630	384	<40	4
2015	0	169	25	194	185	520	190	98	4
Total:		5732	1142	6874					

Definitions:

On treatment defined as being on ARV therapy in the specified month and not reported deceased

Duration defined as cumulative years on ARV therapy, excluding periods of treatment interruption

Current CD4 and PVL tests defined as tests done in the last 6 months (most recent)

Current ARV defined as number of ARV drugs in the current regimen





2.2 Median Viral Load and CD4 for Active patients in Drug Treatment Program

MON-YYYY	# of patients	Median # of therapy days	# of patients with PVL test	Median PVL	# of patients with CD4 test	Median CD4
JAN-2014	6557	784	2429	<40	2151	560
FEB-2014	6570	784	1895	<40	1656	550
MAR-2014	6598	788	2156	<40	1927	550
APR-2014	6611	790	2126	<40	1874	560
MAY-2014	6677	769	2119	<40	1887	560
JUN-2014	6644	784	1994	<40	1768	550
JUL-2014	6682	780	2179	<40	1930	550
AUG-2014	6703	775	2026	<40	1806	570
SEP-2014	6730	770	2284	<40	2003	550
OCT-2014	6760	764	2250	<40	1957	570
NOV-2014	6758	761	1920	<40	1706	580
DEC-2014	6772	766	1895	<40	1687	580
JAN-2015	6746	762	2428	<40	2106	580
FEB-2015	6800	754	1981	<40	1714	570
MAR-2015	6846	748	2175	<40	1861	570
APR-2015	6859	739	2147	<40	1833	590
MAY-2015	6896	740	2028	<40	1689	570

Definitions:

Active patient defined as being on ARV treatment in the specified month

Therapy days defined as number of consecutive days on ARV treatment (most recent uninterrupted period)

PVL and CD4 tests defined as tests done in the specified month





2.3 Median Viral Load and CD4 for Inactive patients in Drug Treatment Program

MON-YYYY	# of patients	Median # days of off therapy	# of patients with PVL test	Median PVL	# of patients with CD4 test	Median CD4
JAN-2014	1411	2265	100	6683	76	285
FEB-2014	1432	2150	73	496	67	490
MAR-2014	1434	2154	114	3726	98	340
APR-2014	1444	2140	112	128	90	400
MAY-2014	1415	2305	90	617	76	350
JUN-2014	1468	2047	96	423	82	380
JUL-2014	1460	2111	95	982	76	355
AUG-2014	1452	2158	87	208	72	365
SEP-2014	1452	2177	103	866	89	390
OCT-2014	1440	2247	84	257	62	395
NOV-2014	1453	2233	74	3945	64	400
DEC-2014	1472	2188	93	557	72	340
JAN-2015	1510	2057	105	1364	84	305
FEB-2015	1489	2141	98	74	83	380
MAR-2015	1463	2305	100	66	85	400
APR-2015	1469	2276	82	2279	63	500
MAY-2015	1456	2372	76	104	57	420

Definitions:

Inactive patient defined as not deceased, not being on ARV treatment in the specified month (but previously treated with ARVs)

Days off therapy defined as number of days elapsed since last ARV treatment

PVL and CD4 tests defined as tests done in the specified month





2.4 BC-CfE Enrollment

MON-YYYY	Currently on ARV Therapy	Currently off ARV Therapy	Deceased	First Starts	Experienced Starts	New Inactive	Net Change	Cumulative Patients
JAN-2014	6539	1411	2	30	144	136	35	11494
FEB-2014	6548	1432	9	40	139	159	9	11538
MAR-2014	6573	1434	9	36	151	146	25	11582
APR-2014	6587	1444	5	27	159	161	14	11618
MAY-2014	6646	1415	14	38	191	152	59	11668
JUN-2014	6618	1468	7	24	142	183	-28	11706
JUL-2014	6659	1460	8	34	176	159	41	11750
AUG-2014	6683	1452	6	18	165	149	24	11782
SEP-2014	6713	1452	2	25	168	159	30	11821
OCT-2014	6738	1440	7	21	159	146	25	11848
NOV-2014	6732	1453	12	19	135	144	-6	11872
DEC-2014	6747	1472	7	39	136	147	15	11921
JAN-2015	6714	1510	13	24	147	185	-33	11956
FEB-2015	6772	1489	7	37	190	161	58	12009
MAR-2015	6824	1463	7	30	173	142	52	12050
APR-2015	6830	1469	14	29	170	174	6	12087
MAY-2015	6874	1456	5	32	167	148	44	12127

Definitions:

Currently on ARV Therapy defined as being on ARV treatment in the specified month, and not deceased/moved out of BC

Currently off ARV Therapy defined as not being on ARV treatment in the specified month, not deceased/moved out of BC, but on ARVs in the past

Deceased defined as deceased in the specified month, and being on ARV treatment in the previous month

First Starts defined as starting ARV treatment in the specified month for the first time (ARV naive)

Experienced Starts defined as starting ARV treatment in the specified month, but previously being treated with ARVs

New Inactive defined as not being on ARV treatment in the specified month, not deceased/moved out of BC, but on ARV treatment in the previous month

Net Change is defined as difference between ARV starts (First and Experienced) and ARV stops (Deceased/Moved out of BC and New Inactive)





2.5 Percent Distribution of Participants on ARV Therapy by Number of Drugs

MON-YYYY	Less than 3 Drugs	3 Drugs	4 Drugs	5 or more Drugs	All ARV	Less than 3 Drugs%	3 Drugs%	4 Drugs%	5 or more Drugs%	Total%
JAN-2014	47	6025	414	71	6557	0.72%	91.89%	6.31%	1.08%	100.00%
FEB-2014	50	6034	418	68	6570	0.76%	91.84%	6.36%	1.04%	100.00%
MAR-2014	50	6054	424	70	6598	0.76%	91.76%	6.43%	1.06%	100.00%
APR-2014	46	6067	422	76	6611	0.70%	91.77%	6.38%	1.15%	100.00%
MAY-2014	47	6138	418	74	6677	0.70%	91.93%	6.26%	1.11%	100.00%
JUN-2014	50	6107	416	71	6644	0.75%	91.92%	6.26%	1.07%	100.00%
JUL-2014	47	6147	415	73	6682	0.70%	91.99%	6.21%	1.09%	100.00%
AUG-2014	47	6170	414	72	6703	0.70%	92.05%	6.18%	1.07%	100.00%
SEP-2014	50	6185	424	71	6730	0.74%	91.90%	6.30%	1.05%	100.00%
OCT-2014	44	6209	434	73	6760	0.65%	91.85%	6.42%	1.08%	100.00%
NOV-2014	47	6217	424	70	6758	0.70%	91.99%	6.27%	1.04%	100.00%
DEC-2014	45	6232	421	74	6772	0.66%	92.03%	6.22%	1.09%	100.00%
JAN-2015	47	6185	440	74	6746	0.70%	91.68%	6.52%	1.10%	100.00%
FEB-2015	43	6232	452	73	6800	0.63%	91.65%	6.65%	1.07%	100.00%
MAR-2015	43	6300	436	67	6846	0.63%	92.02%	6.37%	0.98%	100.00%
APR-2015	42	6314	436	67	6859	0.61%	92.05%	6.36%	0.98%	100.00%
MAY-2015	45	6350	433	68	6896	0.65%	92.08%	6.28%	0.99%	100.00%

Definitions:

Number of Drugs is calculated as number of individual drugs in ARV Therapy (excluding low dose ritonavir used for boosting a protease inhibitor)





2.6 Number of Participants on Nucleoside/Nucleotide Analogues by INGREDIENT

	Lamivudine		Abacavir		Zidovudine		Stavudine		Didanosine		Emtricitabine		Tenofovir	
	Initial	All	Initial	All	Initial	All	Initial	All	Initial	All	Initial	All	Initial	All
JAN-2014	8 19%	2381 37%	7 17%	1994 31%	0 0%	144 2%	0 0%	25 0%	0 0%	17 0%	33 79%	3863 61%	36 86%	4270 67%
FEB-2014	7 16%	2383 37%	7 16%	1992 31%	0 0%	140 2%	0 0%	25 0%	0 0%	16 0%	37 84%	3880 61%	37 84%	4286 67%
MAR-2014	7 16%	2386 37%	6 14%	2007 31%	0 0%	140 2%	0 0%	22 0%	0 0%	13 0%	37 84%	3893 61%	38 86%	4298 67%
APR-2014	3 8%	2396 37%	3 8%	2022 32%	0 0%	137 2%	0 0%	22 0%	0 0%	12 0%	33 92%	3904 61%	33 92%	4301 67%
MAY-2014	17 34%	2434 38%	16 32%	2058 32%	1 2%	137 2%	0 0%	21 0%	0 0%	13 0%	33 66%	3929 61%	33 66%	4325 67%
JUN-2014	8 21%	2431 38%	9 24%	2063 32%	0 0%	130 2%	0 0%	20 0%	1 3%	13 0%	29 76%	3905 61%	29 76%	4293 67%
JUL-2014	13 30%	2462 38%	11 25%	2095 32%	1 2%	129 2%	0 0%	22 0%	0 0%	13 0%	31 70%	3918 60%	32 73%	4298 66%
AUG-2014	7 23%	2474 38%	7 23%	2108 32%	0 0%	132 2%	0 0%	21 0%	0 0%	11 0%	24 77%	3913 60%	24 77%	4287 66%
SEP-2014	15 38%	2517 39%	12 31%	2146 33%	3 8%	136 2%	0 0%	18 0%	0 0%	12 0%	24 62%	3905 60%	24 62%	4285 66%
OCT-2014	10 37%	2546 39%	9 33%	2173 33%	0 0%	134 2%	0 0%	18 0%	0 0%	12 0%	17 63%	3906 60%	17 63%	4287 65%
NOV-2014	6 25%	2548 39%	6 25%	2183 33%	0 0%	129 2%	0 0%	18 0%	0 0%	12 0%	17 71%	3896 59%	19 79%	4269 65%
DEC-2014	13 27%	2576 39%	9 18%	2205 34%	3 6%	129 2%	0 0%	19 0%	0 0%	11 0%	36 73%	3876 59%	37 76%	4248 65%
JAN-2015	10 29%	2585 40%	10 29%	2222 34%	0 0%	127 2%	0 0%	19 0%	0 0%	11 0%	25 71%	3850 59%	25 71%	4214 64%
FEB-2015	9 17%	2595 39%	9 17%	2230 34%	0 0%	127 2%	0 0%	19 0%	0 0%	9 0%	44 83%	3891 59%	44 83%	4254 64%
MAR-2015	11 27%	2614 39%	11 27%	2257 34%	0 0%	124 2%	0 0%	18 0%	0 0%	10 0%	30 73%	3923 59%	30 73%	4279 64%
APR-2015	11 31%	2631 40%	11 31%	2272 34%	0 0%	117 2%	0 0%	16 0%	0 0%	9 0%	24 67%	3923 59%	24 67%	4279 64%
MAY-2015	8 21%	2643 40%	7 18%	2285 34%	0 0%	118 2%	0 0%	14 0%	0 0%	9 0%	31 79%	3935 59%	32 82%	4289 64%

Definitions:

Initial is defined as number of patients whose first ARV treatment with the BC-CfE DTP contains INGREDIENT;

% is calculated as ratio of "Initial" and number of patients whose first treatment is of given CLASS

All is defined as number of patients on ARV treatment which contains INGREDIENT;

% is calculated as ratio of "All" and number of patients whose treatment is of given CLASS





2.7 Number of Participants on Protease Inhibitor by INGREDIENT

	(fos)amprenavir		Atazanavir		Darunavir		Lopinavir		Nelfinavir		Ritonavir		Saquinavir	
	Initial	All	Initial	All	Initial	All	Initial	All	Initial	All	Initial	All	Initial	All
JAN-2014	0 0%	19 1%	10 59%	2306 65%	7 41%	738 21%	0 0%	471 13%	0 0%	6 0%	0 0%	3 0%	0 0%	28 1%
FEB-2014	0 0%	19 1%	12 57%	2287 64%	7 33%	761 21%	2 10%	470 13%	0 0%	4 0%	0 0%	2 0%	0 0%	27 1%
MAR-2014	0 0%	18 1%	8 47%	2266 64%	7 41%	788 22%	2 12%	475 13%	0 0%	5 0%	0 0%	2 0%	0 0%	26 1%
APR-2014	0 0%	18 1%	11 52%	2259 63%	10 48%	811 23%	0 0%	468 13%	0 0%	3 0%	0 0%	2 0%	0 0%	26 1%
MAY-2014	0 0%	16 0%	7 41%	2249 64%	9 53%	815 23%	1 6%	456 13%	0 0%	4 0%	0 0%	3 0%	0 0%	25 1%
JUN-2014	0 0%	16 0%	5 31%	2198 63%	9 56%	831 24%	2 13%	449 13%	0 0%	5 0%	0 0%	3 0%	0 0%	25 1%
JUL-2014	0 0%	15 0%	10 59%	2182 63%	6 35%	851 24%	1 6%	433 12%	0 0%	5 0%	0 0%	1 0%	0 0%	26 1%
AUG-2014	0 0%	14 0%	2 20%	2153 62%	8 80%	856 25%	0 0%	425 12%	0 0%	5 0%	0 0%	1 0%	0 0%	24 1%
SEP-2014	0 0%	14 0%	4 31%	2139 62%	6 46%	868 25%	3 23%	424 12%	0 0%	5 0%	0 0%	1 0%	0 0%	21 1%
OCT-2014	0 0%	14 0%	3 30%	2133 62%	5 50%	889 26%	2 20%	407 12%	0 0%	4 0%	0 0%	1 0%	0 0%	19 1%
NOV-2014	0 0%	15 0%	10 83%	2107 62%	2 17%	893 26%	0 0%	397 12%	0 0%	5 0%	0 0%	1 0%	0 0%	19 1%
DEC-2014	0 0%	13 0%	7 32%	2075 61%	12 55%	922 27%	3 14%	385 11%	0 0%	5 0%	0 0%	1 0%	0 0%	19 1%
JAN-2015	0 0%	12 0%	6 50%	2030 60%	6 50%	933 28%	0 0%	383 11%	0 0%	4 0%	0 0%	1 0%	0 0%	18 1%
FEB-2015	0 0%	10 0%	8 31%	2032 60%	18 69%	959 28%	0 0%	380 11%	0 0%	5 0%	0 0%	1 0%	0 0%	17 1%
MAR-2015	0 0%	11 0%	8 47%	2047 60%	8 47%	968 29%	0 0%	375 11%	1 6%	6 0%	0 0%	1 0%	0 0%	17 0%
APR-2015	0 0%	12 0%	7 32%	2030 60%	15 68%	985 29%	0 0%	364 11%	0 0%	6 0%	0 0%	1 0%	0 0%	18 1%
MAY-2015	0 0%	12 0%	10 63%	2008 59%	6 38%	1013 30%	0 0%	361 11%	0 0%	4 0%	0 0%	1 0%	0 0%	19 1%

Definitions:

Initial is defined as number of patients whose first ARV treatment with the BC-CfE DTP contains INGREDIENT;

% is calculated as ratio of "Initial" and number of patients whose first treatment is of given CLASS

All is defined as number of patients on ARV treatment which contains INGREDIENT;

% is calculated as ratio of "All" and number of patients whose treatment is of given CLASS

Ritonavir - greater than 400 mg total daily dose





2.7 Number of Participants on Protease Inhibitor by INGREDIENT (continued)

	Tipranavir			
	Initial		All	
JAN-2014	0	0%	1	0%
FEB-2014	0	0%	0	0%
MAR-2014	0	0%	1	0%
APR-2014	0	0%	1	0%
MAY-2014	0	0%	1	0%
JUN-2014	0	0%	1	0%
JUL-2014	0	0%	1	0%
AUG-2014	0	0%	1	0%
SEP-2014	0	0%	1	0%
OCT-2014	0	0%	1	0%
NOV-2014	0	0%	1	0%
DEC-2014	0	0%	1	0%
JAN-2015	0	0%	1	0%
FEB-2015	0	0%	1	0%
MAR-2015	0	0%	1	0%
APR-2015	0	0%	1	0%
MAY-2015	0	0%	1	0%

Definitions:

Initial is defined as number of patients whose first ARV treatment with the BC-CfE DTP contains INGREDIENT;

% is calculated as ratio of "Initial" and number of patients whose first treatment is of given CLASS

All is defined as number of patients on ARV treatment which contains INGREDIENT;

% is calculated as ratio of "All" and number of patients whose treatment is of given CLASS

Ritonavir - greater than 400 mg total daily dose





2.8 Number of Participants on Non-Nucleosides by INGREDIENT

	Efavirenz		Etravirine		Nevirapine		Rilpivirine	
	Initial	All	Initial	All	Initial	All	Initial	All
JAN-2014	12 80%	1342 48%	1 7%	304 11%	0 0%	948 34%	2 13%	233 8%
FEB-2014	12 71%	1343 48%	0 0%	305 11%	0 0%	942 33%	5 29%	244 9%
MAR-2014	10 71%	1320 47%	0 0%	298 11%	0 0%	943 34%	4 29%	253 9%
APR-2014	4 57%	1304 47%	0 0%	302 11%	1 14%	941 34%	2 29%	260 9%
MAY-2014	5 71%	1298 46%	0 0%	299 11%	0 0%	938 34%	2 29%	263 9%
JUN-2014	4 50%	1280 46%	1 13%	303 11%	1 13%	926 34%	2 25%	258 9%
JUL-2014	8 73%	1261 46%	0 0%	304 11%	1 9%	927 34%	2 18%	257 9%
AUG-2014	11 85%	1260 46%	1 8%	304 11%	0 0%	928 34%	1 8%	254 9%
SEP-2014	8 73%	1254 46%	0 0%	300 11%	2 18%	928 34%	1 9%	251 9%
OCT-2014	3 60%	1231 45%	2 40%	306 11%	0 0%	921 34%	0 0%	255 9%
NOV-2014	2 100%	1207 45%	0 0%	302 11%	0 0%	911 34%	0 0%	252 9%
DEC-2014	8 62%	1191 45%	0 0%	304 11%	1 8%	901 34%	4 31%	254 10%
JAN-2015	6 75%	1174 45%	0 0%	306 12%	0 0%	901 34%	2 25%	254 10%
FEB-2015	4 50%	1170 45%	0 0%	306 12%	0 0%	893 34%	4 50%	251 10%
MAR-2015	7 88%	1167 45%	0 0%	303 12%	0 0%	890 34%	1 13%	255 10%
APR-2015	4 67%	1149 44%	1 17%	305 12%	0 0%	888 34%	1 17%	259 10%
MAY-2015	7 58%	1141 44%	1 8%	308 12%	0 0%	886 34%	4 33%	260 10%

Definitions:

Initial is defined as number of patients whose first ARV treatment with the BC-CfE DTP contains INGREDIENT;

% is calculated as ratio of "Initial" and number of patients whose first treatment is of given CLASS

All is defined as number of patients on ARV treatment which contains INGREDIENT;

% is calculated as ratio of "All" and number of patients whose treatment is of given CLASS





2.9 Number of Participants on Entry/Integrase Inhibitors by INGREDIENT

	Dolutegravir		Elvitegravir		Maraviroc		Raltegravir		Enfuvirtide	
	Initial	All	Initial	All	Initial	All	Initial	All	Initial	All
JAN-2014	4 31%	13 1%	6 46%	154 13%	0 0%	79 7%	3 23%	926 81%	0 0%	2 0%
FEB-2014	1 17%	19 2%	5 83%	163 14%	0 0%	77 7%	0 0%	939 81%	0 0%	2 0%
MAR-2014	1 8%	31 3%	8 62%	179 15%	0 0%	78 6%	4 31%	947 79%	0 0%	2 0%
APR-2014	4 50%	78 6%	2 25%	198 16%	0 0%	82 7%	2 25%	953 76%	0 0%	2 0%
MAY-2014	16 64%	138 10%	6 24%	220 16%	0 0%	80 6%	3 12%	948 71%	0 0%	1 0%
JUN-2014	7 47%	187 13%	7 47%	237 17%	0 0%	76 5%	1 7%	930 67%	0 0%	2 0%
JUL-2014	10 59%	247 17%	5 29%	253 17%	0 0%	74 5%	2 12%	932 64%	0 0%	2 0%
AUG-2014	6 55%	298 20%	3 27%	268 18%	0 0%	74 5%	2 18%	919 61%	0 0%	2 0%
SEP-2014	7 47%	355 22%	4 27%	281 18%	0 0%	73 5%	4 27%	919 58%	0 0%	1 0%
OCT-2014	7 47%	406 25%	6 40%	309 19%	0 0%	71 4%	2 13%	906 55%	0 0%	1 0%
NOV-2014	5 45%	452 27%	5 45%	325 19%	0 0%	70 4%	1 9%	893 53%	0 0%	1 0%
DEC-2014	11 65%	500 29%	6 35%	336 19%	0 0%	72 4%	0 0%	888 51%	0 0%	1 0%
JAN-2015	13 72%	541 30%	4 22%	350 19%	1 6%	68 4%	1 6%	879 49%	0 0%	1 0%
FEB-2015	15 60%	578 31%	8 32%	358 19%	0 0%	74 4%	2 8%	882 48%	0 0%	1 0%
MAR-2015	10 53%	603 32%	5 26%	369 20%	0 0%	69 4%	4 21%	870 47%	0 0%	2 0%
APR-2015	7 50%	632 33%	4 29%	374 20%	2 14%	67 4%	1 7%	863 45%	0 0%	2 0%
MAY-2015	10 63%	667 34%	4 25%	382 20%	1 6%	70 4%	2 13%	863 44%	0 0%	2 0%

Definitions:

Initial is defined as number of patients whose first ARV treatment with the BC-CfE DTP contains INGREDIENT;

% is calculated as ratio of "Initial" and number of patients whose first treatment is of given CLASS

All is defined as number of patients on ARV treatment which contains INGREDIENT;

% is calculated as ratio of "All" and number of patients whose treatment is of given CLASS





2.10 Distribution of Participants in HIV/AIDS Drug Treatment Program by Regimen Class

MON-YYYY	Boosted PI + 2 NRTIs		NNRTI + 2 NRTIs		Integrase + 2 NRTIs		Un-boosted PI + 2 NRTIs		MDRT		Other	
	n	%	n	%	n	%	n	%	n	%	n	%
JAN-2014	2572	39.23	2316	35.32	551	8.40	191	2.91	71	1.08	856	13.05
FEB-2014	2555	38.89	2319	35.30	579	8.81	189	2.88	68	1.04	860	13.09
MAR-2014	2560	38.80	2310	35.01	606	9.18	188	2.85	70	1.06	864	13.09
APR-2014	2542	38.45	2288	34.61	653	9.88	192	2.90	76	1.15	860	13.01
MAY-2014	2537	38.00	2275	34.07	739	11.07	193	2.89	74	1.11	859	12.87
JUN-2014	2502	37.66	2246	33.80	782	11.77	183	2.75	71	1.07	860	12.94
JUL-2014	2493	37.31	2235	33.45	840	12.57	191	2.86	73	1.09	850	12.72
AUG-2014	2465	36.77	2232	33.30	890	13.28	186	2.77	72	1.07	858	12.80
SEP-2014	2437	36.21	2221	33.00	946	14.06	187	2.78	71	1.05	868	12.90
OCT-2014	2420	35.80	2190	32.40	1008	14.91	192	2.84	73	1.08	877	12.97
NOV-2014	2422	35.84	2159	31.95	1056	15.63	184	2.72	70	1.04	867	12.83
DEC-2014	2398	35.41	2146	31.69	1104	16.30	185	2.73	74	1.09	865	12.77
JAN-2015	2349	34.82	2125	31.50	1138	16.87	179	2.65	74	1.10	881	13.06
FEB-2015	2368	34.82	2113	31.07	1181	17.37	178	2.62	73	1.07	887	13.04
MAR-2015	2404	35.12	2113	30.86	1208	17.65	185	2.70	67	0.98	869	12.69
APR-2015	2398	34.96	2096	30.56	1244	18.14	184	2.68	67	0.98	870	12.68
MAY-2015	2406	34.89	2095	30.38	1277	18.52	178	2.58	68	0.99	872	12.65

Definitions:

n is number of participants on the specified regimen class in the specified month
 % is ratio of n and total number of participants on ART in the specified month





2.11 Baseline CD4 for Antiretroviral First Starts

MON-YYYY	# of First Starts	# of Pts with CD4 < 100	# of Pts with CD4: 100-199	# of Pts with CD4: 200-349	# of Pts with CD4: 350-500	# of Pts with CD4 > 500	Median CD4
JAN-2014	30	6	2	9	4	9	300
FEB-2014	40	4	7	10	4	13	316
MAR-2014	36	2	2	9	10	13	405
APR-2014	27	3	6	2	5	10	355
MAY-2014	38	2	4	3	10	18	500
JUN-2014	24	3	1	6	6	7	400
JUL-2014	34	3	7	7	5	13	350
AUG-2014	18	3	1	3	5	6	410
SEP-2014	25	5	3	3	4	9	395
OCT-2014	21	1	4	6	4	5	315
NOV-2014	19	5	1	0	4	8	475
DEC-2014	39	3	5	7	11	13	401
JAN-2015	24	2	2	8	3	9	370
FEB-2015	37	3	3	9	4	16	457
MAR-2015	30	2	5	5	8	8	393
APR-2015	29	8	3	4	3	11	340
MAY-2015	32	3	5	10	5	8	290

Definitions:

First Starts defined as starting ARV treatment in the specified month for the first time (ARV naive)

Baseline CD4 is defined as most recent CD4 test before ARV start





2.12 DTP Participants with PVL Measurement within previous five years, and never on ART

MON-YYYY	# of Participants with PVL test	# of Participants with PVL test, and never on ART
JAN-2014	10030	2581
FEB-2014	10053	2575
MAR-2014	10066	2561
APR-2014	10096	2564
MAY-2014	10120	2558
JUN-2014	10155	2568
JUL-2014	10167	2556
AUG-2014	10216	2590
SEP-2014	10258	2600
OCT-2014	10281	2609
NOV-2014	10312	2631
DEC-2014	10353	2635
JAN-2015	10395	2665
FEB-2015	10441	2671
MAR-2015	10480	2679
APR-2015	10501	2690
MAY-2015	10561	2717

Definitions:

Patients with PVL test are defined as having at least one PVL test within previous five years, and not reported deceased/moved

Never on ART are subset of patients with PVL test, and not being treated with ARVs on or before specified month

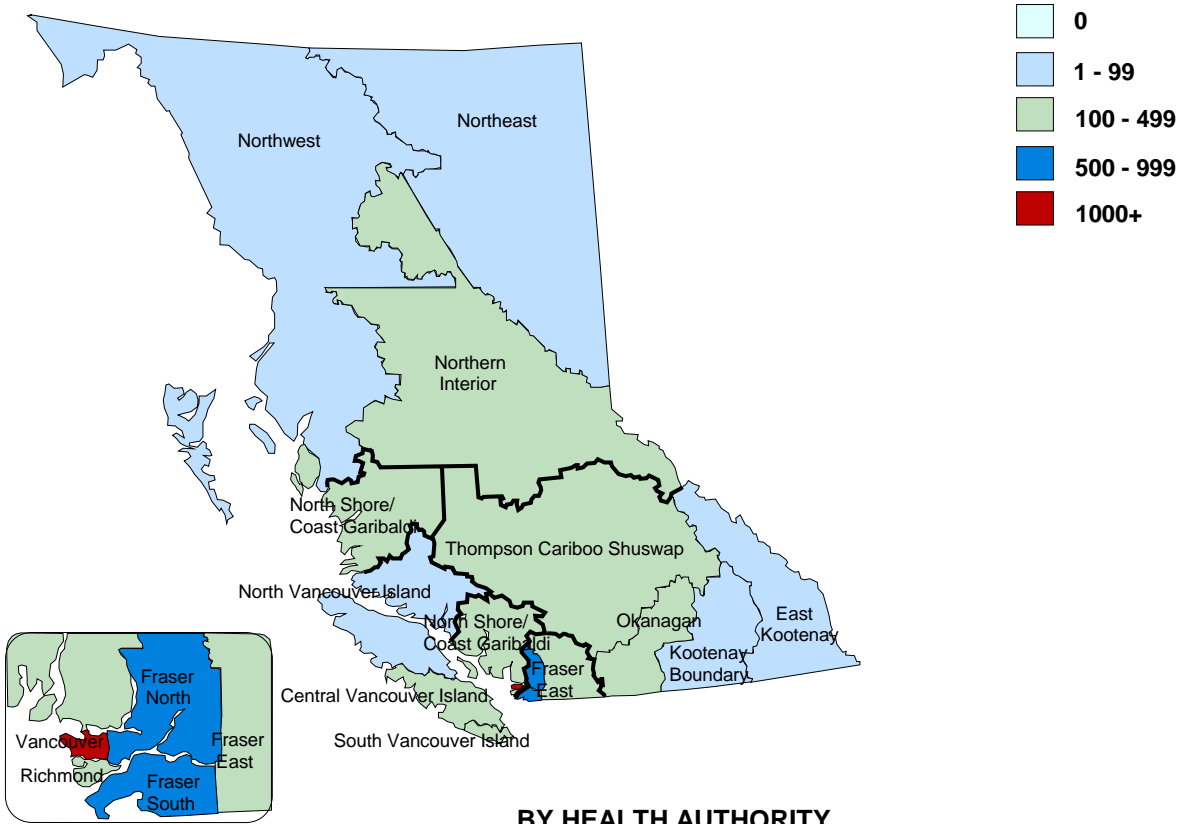




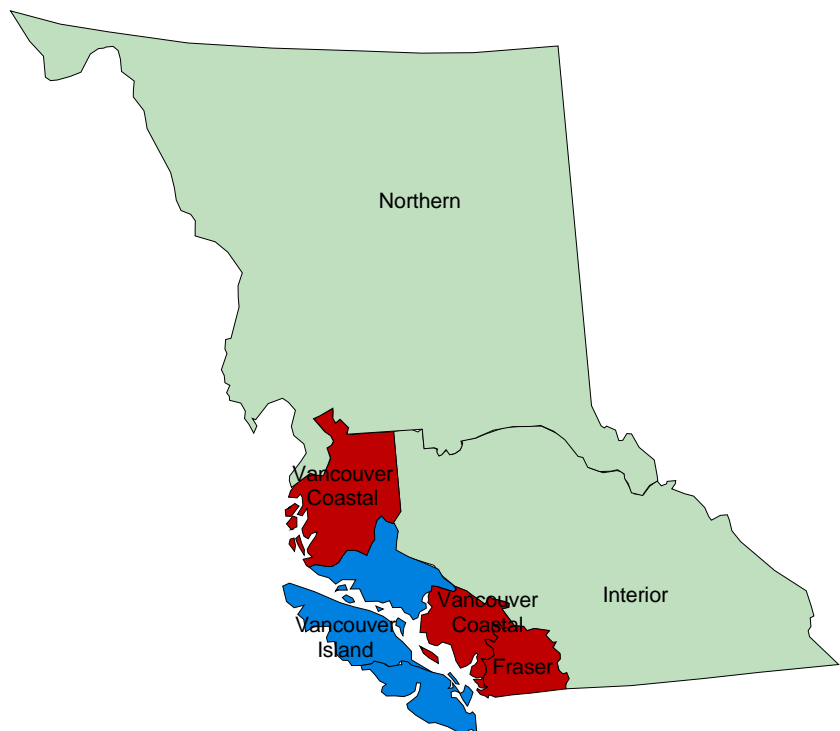
3.1 Distribution of HIV/AIDS Drug Treatment Program Active Participants
May 2015

N = 6896

BY HEALTH SERVICES DELIVERY AREA



BY HEALTH AUTHORITY

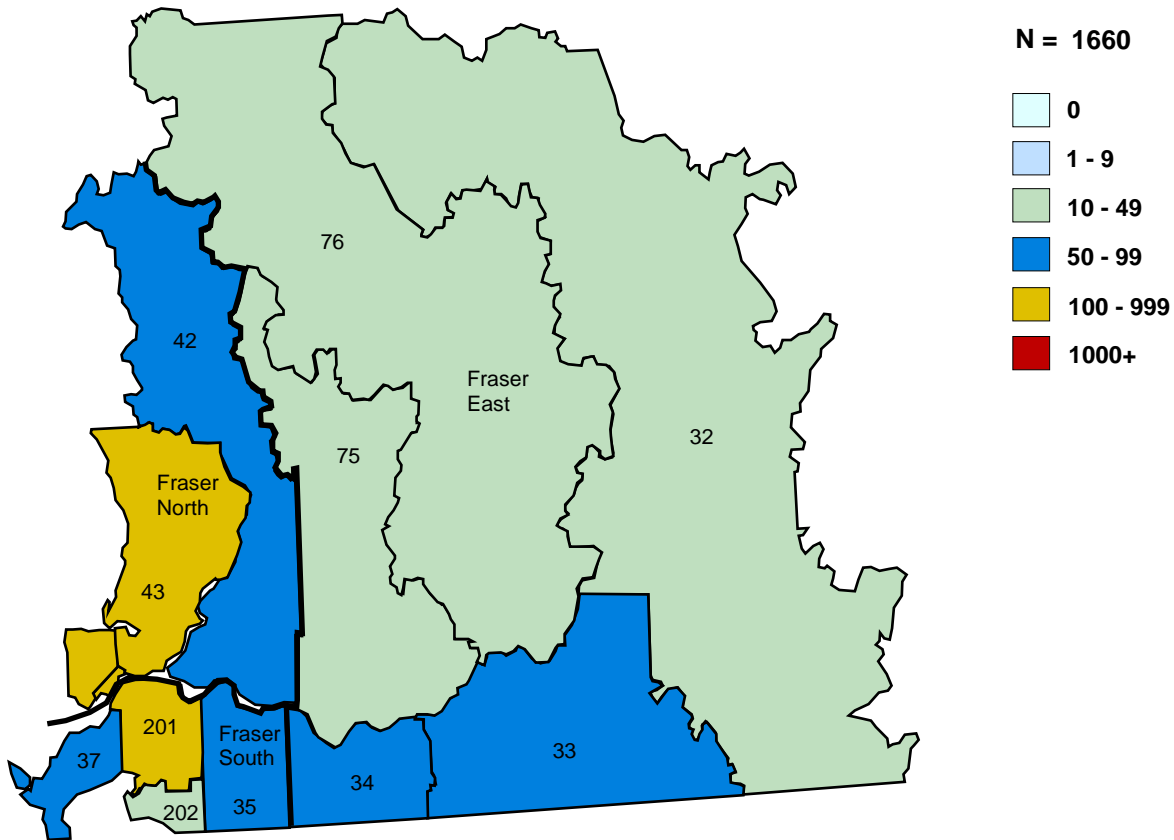




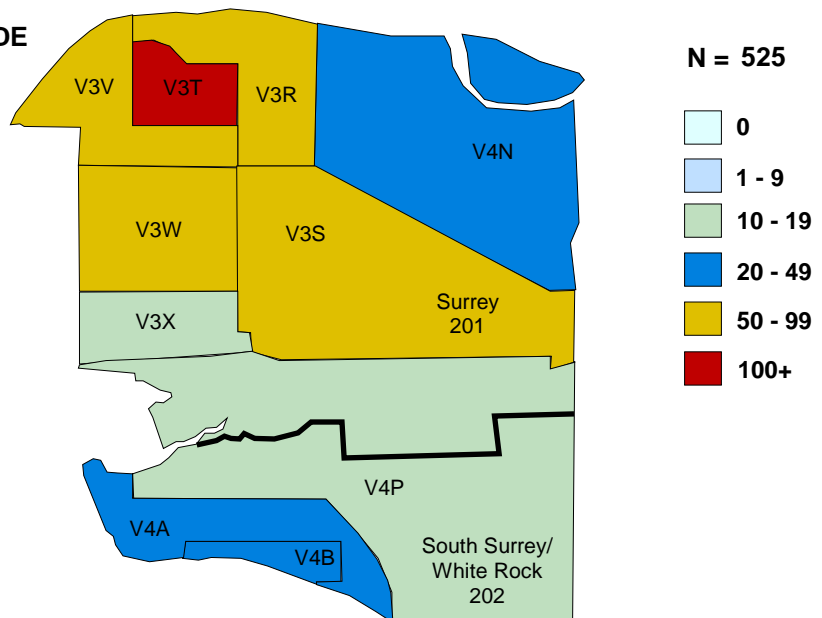
3.3 Distribution of HIV/AIDS Drug Treatment Program Active Participants

May 2015

FRASER HEALTH AUTHORITY BY HEALTH SERVICES DELIVERY AREA/LOCAL HEALTH AREA



SURREY BY POSTAL CODE

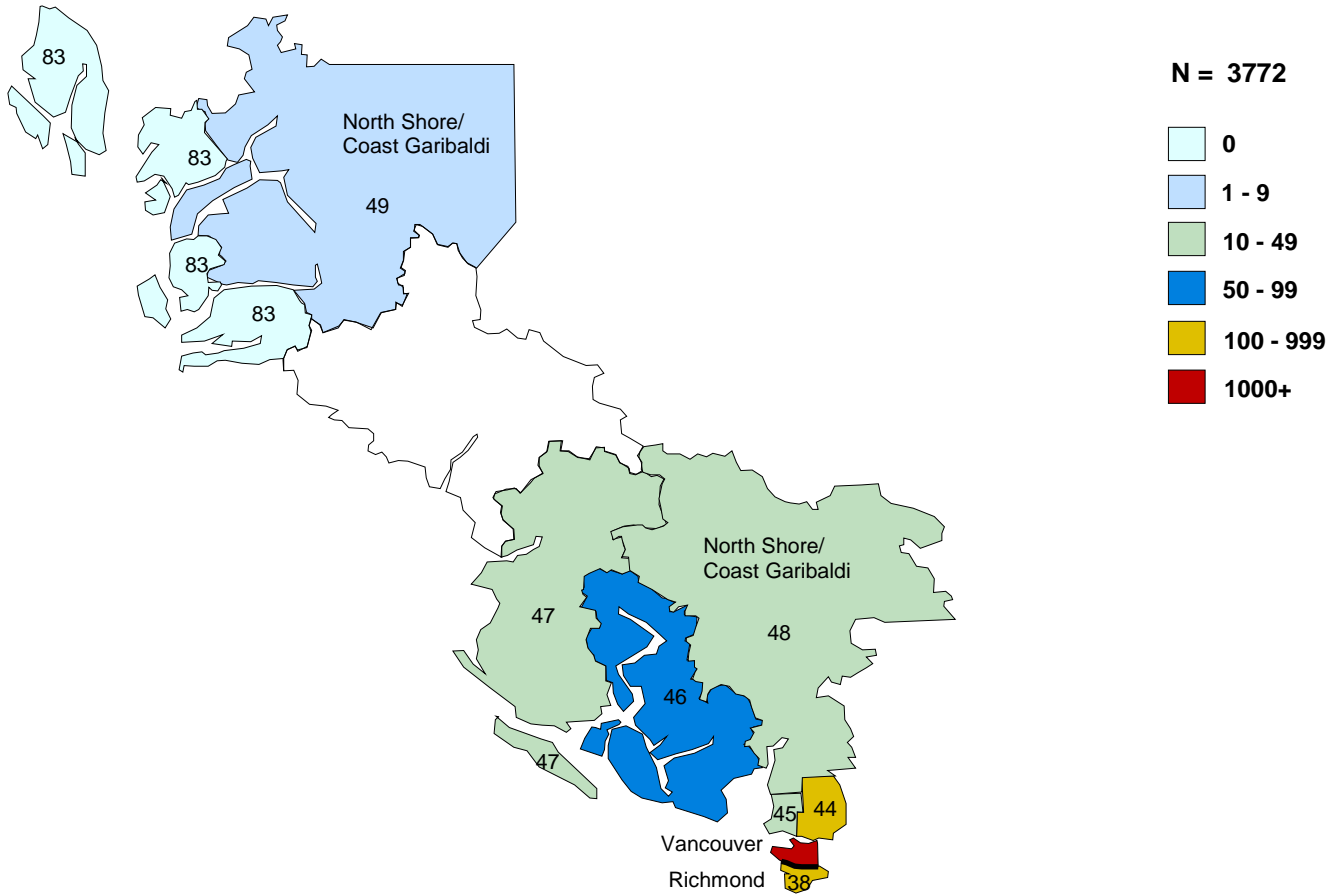




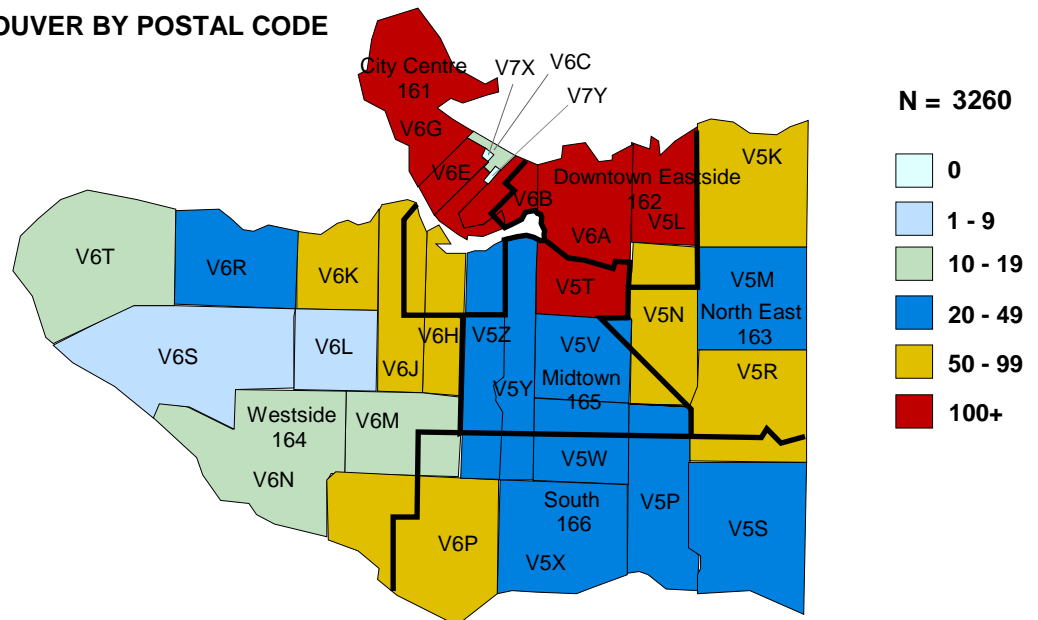
3.4 Distribution of HIV/AIDS Drug Treatment Program Active Participants

May 2015

VANCOUVER COASTAL HEALTH AUTHORITY BY HEALTH SERVICES DELIVERY AREA/LOCAL HEALTH AREA



VANCOUVER BY POSTAL CODE

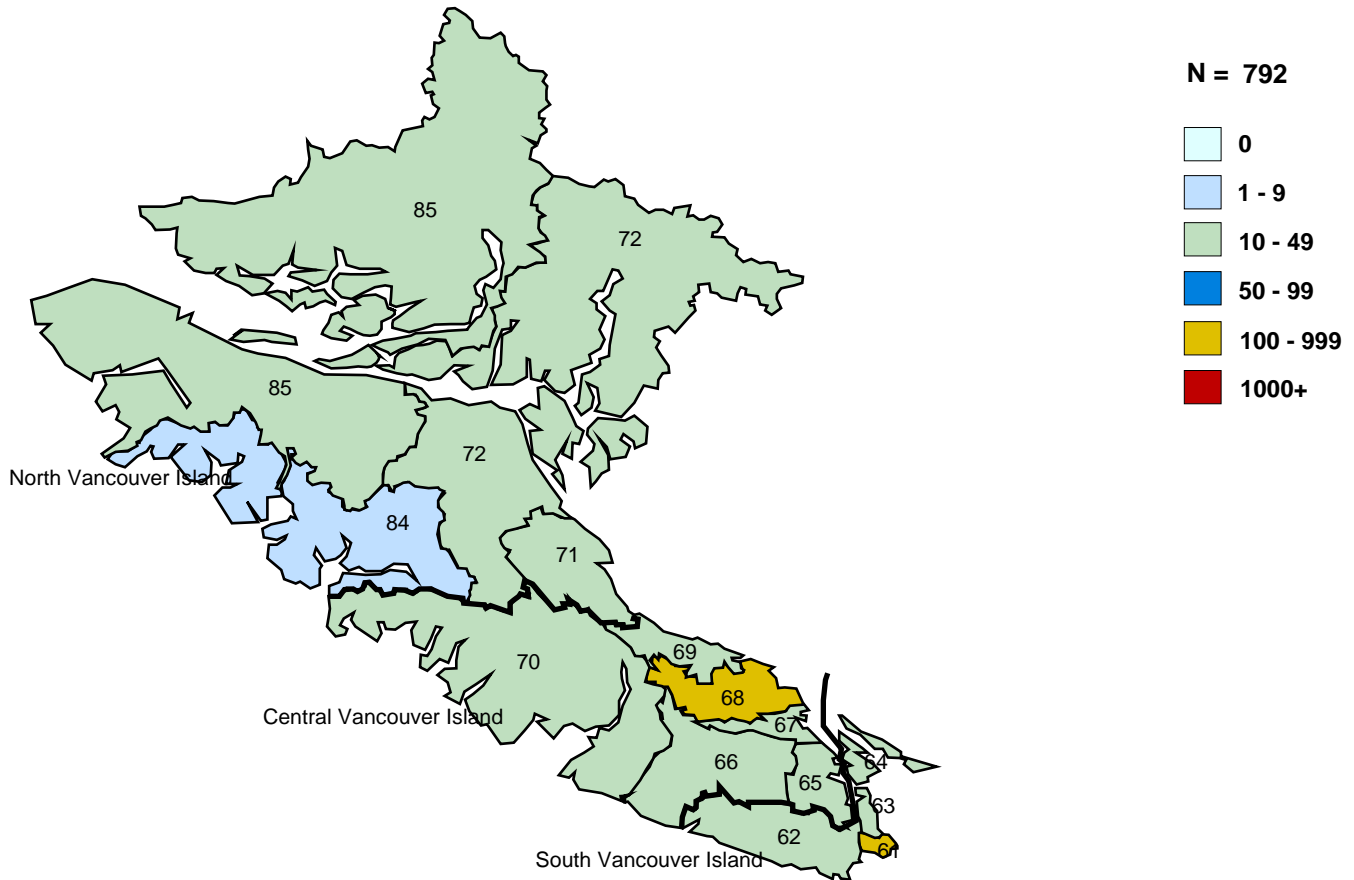




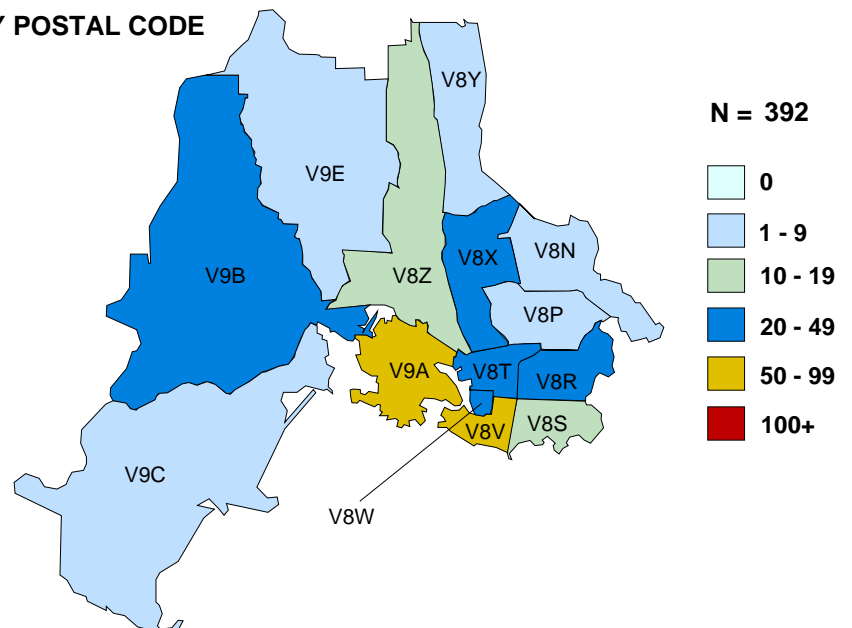
3.5 Distribution of HIV/AIDS Drug Treatment Program Active Participants

May 2015

VANCOUVER ISLAND HEALTH AUTHORITY BY HEALTH SERVICES DELIVERY AREA/LOCAL HEALTH AREA



VICTORIA BY POSTAL CODE

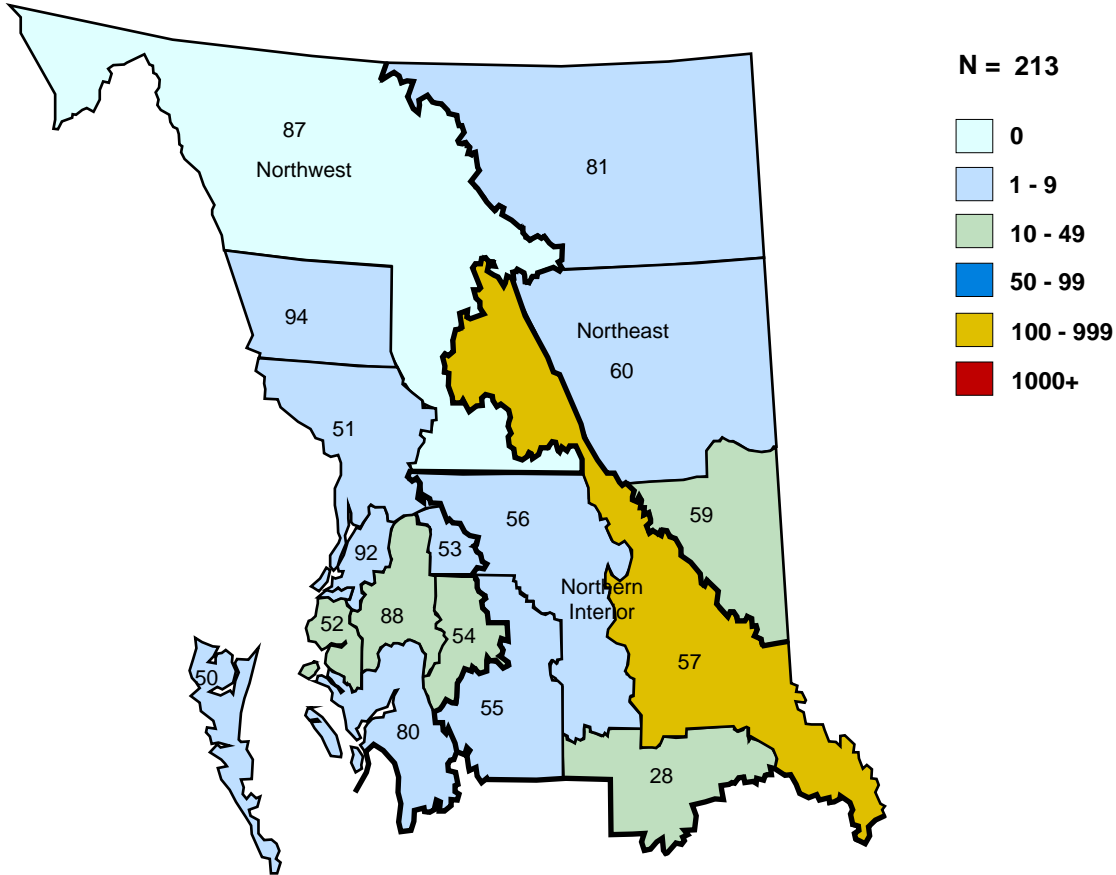




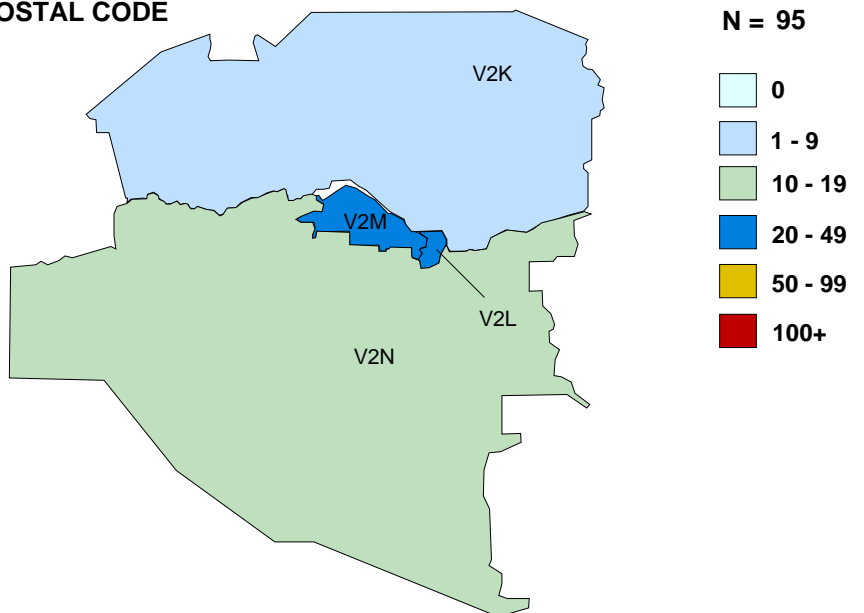
3.6 Distribution of HIV/AIDS Drug Treatment Program Active Participants

May 2015

NORTHERN HEALTH AUTHORITY BY HEALTH SERVICES DELIVERY AREA/LOCAL HEALTH AREA



PRINCE GEORGE BY POSTAL CODE





4.1 Distribution of Participants in BC-CfE Registries by Age and Gender INTERIOR Health Authority

HSDA	Age Group	Alive	Ever treated with ARVs	Currently treated with ARVs
EAST KOOTENAY	35-49	13	15	8
	50+	18	28	12
	Total HSDA:	31	43	20
KOOTENAY BOUNDARY	0-19	1	1	1
	20-34	3	3	1
	35-49	19	25	14
	50+	44	59	34
	Total HSDA:	67	88	50
OKANAGAN	0-19	3	3	2
	20-34	21	22	16
	35-49	93	108	70
	50+	182	265	141
	Total HSDA:	299	398	229
THOMPSON/CARIBOO/ SHUSWAP	0-19	6	6	1
	20-34	18	18	15
	35-49	57	73	46
	50+	88	125	75
	Total HSDA:	169	222	137
Total HA:		566	751	436

	Age Group	Alive	Ever treated with ARVs	Currently treated with ARVs
	0-19	10	10	4
	20-34	42	43	32
	35-49	182	221	138
	50+	332	477	262
Total HA:		566	751	436

Gender	Alive	Ever treated with ARVs	Currently treated with ARVs
Male	439	595	343
Female	127	156	93

Currently treated with ARVs	# of patients	Med Age	Med CD4	Med PVL
Total HA:	436	52	545	35

Definitions:

Currently treated with ARVs defined as being on ARV therapy in the specified month

Med CD4 and PVL tests defined as most recent tests (as of specified month)





4.2 Distribution of Participants in BC-CfE Registries by Treatment Duration INTERIOR Health Authority

HSDA	Treatment Duration	Alive	Currently treated with ARVs
EAST KOOTENAY	10 years or more	16	10
	5 years or more	7	4
	<5 years	8	6
	Total HSDA:	31	20
KOOTENAY BOUNDARY	10 years or more	31	21
	5 years or more	18	15
	<5 years	18	14
	Total HSDA:	67	50
OKANAGAN	10 years or more	156	111
	5 years or more	74	59
	<5 years	69	59
	Total HSDA:	299	229
THOMPSON/CARIBOO/ SHUSWAP	10 years or more	83	58
	5 years or more	36	34
	<5 years	50	45
	Total HSDA:	169	137
Total HA:		566	436

	Treatment Duration	Alive	Currently treated with ARVs
	10 years or more	286	200
	5 years or more	135	112
	<5 years	145	124
Total HA:		566	436

Definitions:

Currently treated with ARVs defined as being on ARV therapy in the specified month

Treatment Duration defined as number of years since ARV initiation





4.3 Distribution of ARV Prescribing Physicians in BC-CfE Registries INTERIOR Health Authority

HSDA of Physician Residency	# of Physicians ever prescribed ARVs	# of Patients ever treated by Physicians	# of Physicians currently prescribing ARVs	# of Patients currently treated by Physicians
EAST KOOTENAY	34	46	13	19
KOOTENAY BOUNDARY	59	106	26	40
OKANAGAN	185	636	69	227
THOMPSON/CARIBOO/SHUSWAP	121	402	43	106
Total:	399	1190	151	392

HSDA of Patient Residency	# of Patients seeking Physician's care out of HA
EAST KOOTENAY	1
KOOTENAY BOUNDARY	12
OKANAGAN	36
THOMPSON/CARIBOO/SHUSWAP	39
Total:	88

Definitions:

Currently prescribing/treated defined as prescribing/being treated in the previous 6 months

of Patients seeking Physician out of HA is defined as patients residing in specified HSDA, but their follow-up physician(s) reside in another HA





4.4 Distribution of Participants in BC-CfE Registries by Age and Gender FRASER Health Authority

HSDA	Age Group	Alive	Ever treated with ARVs	Currently treated with ARVs
FRASER EAST	0-19	7	7	6
	20-34	23	24	17
	35-49	121	134	93
	50+	152	209	122
	Total HSDA:	303	374	238
FRASER NORTH	0-19	20	20	3
	20-34	108	109	95
	35-49	365	417	270
	50+	434	676	355
	Total HSDA:	927	1222	723
FRASER SOUTH	0-19	12	12	5
	20-34	92	94	69
	35-49	357	406	296
	50+	390	579	329
	Unknown	0	1	0
	Total HSDA:	851	1092	699
Total HA:		2081	2688	1660

	Age Group	Alive	Ever treated with ARVs	Currently treated with ARVs
	0-19	39	39	14
	20-34	223	227	181
	35-49	843	957	659
	50+	976	1464	806
	Unknown	0	1	0
Total HA:		2081	2688	1660

Gender	Alive	Ever treated with ARVs	Currently treated with ARVs
Male	1565	2056	1275
Female	516	632	385

Currently treated with ARVs	# of patients	Med Age	Med CD4	Med PVL
Total HA:	1660	49	590	35

Definitions:

Currently treated with ARVs defined as being on ARV therapy in the specified month

Med CD4 and PVL tests defined as most recent tests (as of specified month)





**4.5 Distribution of Participants in BC-CfE Registries by Treatment Duration
FRASER Health Authority**

HSDA	Treatment Duration	Alive	Currently treated with ARVs
FRASER EAST	10 years or more	135	101
	5 years or more	90	72
	<5 years	78	65
	Total HSDA:	303	238
FRASER NORTH	10 years or more	427	309
	5 years or more	240	187
	<5 years	260	227
	Total HSDA:	927	723
FRASER SOUTH	10 years or more	381	298
	5 years or more	230	194
	<5 years	240	207
	Total HSDA:	851	699
Total HA:		2081	1660

	Treatment Duration	Alive	Currently treated with ARVs
	10 years or more	943	708
	5 years or more	560	453
	<5 years	578	499
Total HA:		2081	1660

Definitions:

Currently treated with ARVs defined as being on ARV therapy in the specified month

Treatment Duration defined as number of years since ARV initiation





4.6 Distribution of ARV Prescribing Physicians in BC-CfE Registries FRASER Health Authority

HSDA of Physician Residency	# of Physicians ever prescribed ARVs	# of Patients ever treated by Physicians	# of Physicians currently prescribing ARVs	# of Patients currently treated by Physicians
FRASER EAST	124	366	43	74
FRASER NORTH	223	1334	63	267
FRASER SOUTH	198	1144	46	353
Total:	545	2844	152	694

HSDA of Patient Residency	# of Patients seeking Physician's care out of HA
FRASER EAST	181
FRASER NORTH	608
FRASER SOUTH	476
Total:	1265

Definitions:

Currently prescribing/treated defined as prescribing/being treated in the previous 6 months

of Patients seeking Physician out of HA is defined as patients residing in specified HSDA, but their follow-up physician(s) reside in another HA





**4.7 Distribution of Participants in BC-CfE Registries by Age and Gender
VANCOUVER COASTAL Health Authority**

HSDA	Age Group	Alive	Ever treated with ARVs	Currently treated with ARVs
NORTH SHORE/ COAST GARIBALDI	0-19	2	2	0
	20-34	22	22	21
	35-49	87	101	68
	50+	194	312	170
	Total HSDA:	305	437	259
RICHMOND	0-19	8	8	2
	20-34	18	18	16
	35-49	50	53	42
	50+	70	109	57
	Total HSDA:	146	188	117
VANCOUVER	0-19	58	61	8
	20-34	401	410	311
	35-49	1641	1926	1254
	50+	2296	3814	1823
	Total HSDA:	4396	6211	3396
Total HA:		4847	6836	3772

Age Group	Alive	Ever treated with ARVs	Currently treated with ARVs
0-19	68	71	10
20-34	441	450	348
35-49	1778	2080	1364
50+	2560	4235	2050
Total HA:	4847	6836	3772

Gender	Alive	Ever treated with ARVs	Currently treated with ARVs
	2	2	0
Male	4261	6010	3333
Female	584	824	439

Currently treated with ARVs	# of patients	Med Age	Med CD4	Med PVL
Total HA:	3772	50	590	35

Definitions:

Currently treated with ARVs defined as being on ARV therapy in the specified month

Med CD4 and PVL tests defined as most recent tests (as of specified month)





**4.8 Distribution of Participants in BC-CfE Registries by Treatment Duration
VANCOUVER COASTAL Health Authority**

HSDA	Treatment Duration	Alive	Currently treated with ARVs
NORTH SHORE/ COAST GARIBALDI	10 years or more	167	132
	5 years or more	49	46
	<5 years	89	81
	Total HSDA:	305	259
RICHMOND	10 years or more	69	51
	5 years or more	31	23
	<5 years	46	43
	Total HSDA:	146	117
VANCOUVER	10 years or more	2170	1561
	5 years or more	1081	877
	<5 years	1145	958
	Never on ART	0	0
	Total HSDA:	4396	3396
Total HA:	4847	3772	

	Treatment Duration	Alive	Currently treated with ARVs
	10 years or more	2406	1744
	5 years or more	1161	946
	<5 years	1280	1082
	Never on ART	0	0
Total HA:		4847	3772

Definitions:

Currently treated with ARVs defined as being on ARV therapy in the specified month

Treatment Duration defined as number of years since ARV initiation





**4.9 Distribution of ARV Prescribing Physicians in BC-CfE Registries
VANCOUVER COASTAL Health Authority**

HSDA of Physician Residency	# of Physicians ever prescribed ARVs	# of Patients ever treated by Physicians	# of Physicians currently prescribing ARVs	# of Patients currently treated by Physicians
NORTH SHORE/COAST GARIBALDI	137	356	53	85
RICHMOND	42	268	15	95
VANCOUVER	515	9560	203	5179
Total:	694	10184	271	5359

HSDA of Patient Residency	# of Patients seeking Physician's care out of HA
NORTH SHORE/COAST GARIBALDI	5
RICHMOND	2
VANCOUVER	97
Total:	104

Definitions:

Currently prescribing/treated defined as prescribing/being treated in the previous 6 months

of Patients seeking Physician out of HA is defined as patients residing in specified HSDA, but their follow-up physician(s) reside in another HA





**4.10 Distribution of Participants in BC-CfE Registries by Age and Gender
VANCOUVER ISLAND Health Authority**

HSDA	Age Group	Alive	Ever treated with ARVs	Currently treated with ARVs
CENTRAL VANCOUVER ISLAND	0-19	2	2	1
	20-34	20	22	15
	35-49	81	95	70
	50+	152	244	124
	Total HSDA:		255	363
NORTH VANCOUVER ISLAND	0-19	2	2	1
	20-34	14	15	11
	35-49	35	39	30
	50+	55	83	45
	Total HSDA:		106	139
SOUTH VANCOUVER ISLAND	0-19	8	8	1
	20-34	43	45	32
	35-49	210	252	167
	50+	365	571	295
	Total HSDA:		626	876
Total HA:		987	1378	792

	Age Group	Alive	Ever treated with ARVs	Currently treated with ARVs
	0-19	12	12	3
	20-34	77	82	58
	35-49	326	386	267
	50+	572	898	464
Total HA:		987	1378	792

Gender	Alive	Ever treated with ARVs	Currently treated with ARVs
Male	795	1114	642
Female	192	264	150

Currently treated with ARVs	# of patients	Med Age	Med CD4	Med PVL
Total HA:	792	52	450	35

Definitions:

Currently treated with ARVs defined as being on ARV therapy in the specified month

Med CD4 and PVL tests defined as most recent tests (as of specified month)





4.11 Distribution of Participants in BC-CfE Registries by Treatment Duration VANCOUVER ISLAND Health Authority

HSDA	Treatment Duration	Alive	Currently treated with ARVs
CENTRAL VANCOUVER ISLAND	10 years or more	118	94
	5 years or more	63	55
	<5 years	74	61
	Total HSDA:	255	210
NORTH VANCOUVER ISLAND	10 years or more	47	37
	5 years or more	23	21
	<5 years	36	29
	Total HSDA:	106	87
SOUTH VANCOUVER ISLAND	10 years or more	303	214
	5 years or more	153	129
	<5 years	170	152
	Total HSDA:	626	495
Total HA:		987	792

	Treatment Duration	Alive	Currently treated with ARVs
	10 years or more	468	345
	5 years or more	239	205
	<5 years	280	242
Total HA:		987	792

Definitions:

Currently treated with ARVs defined as being on ARV therapy in the specified month

Treatment Duration defined as number of years since ARV initiation





**4.12 Distribution of ARV Prescribing Physicians in BC-CfE Registries
VANCOUVER ISLAND Health Authority**

HSDA of Physician Residency	# of Physicians ever prescribed ARVs	# of Patients ever treated by Physicians	# of Physicians currently prescribing ARVs	# of Patients currently treated by Physicians
CENTRAL VANCOUVER ISLAND	166	518	83	163
NORTH VANCOUVER ISLAND	110	225	46	68
SOUTH VANCOUVER ISLAND	179	1479	47	510
Total:	455	2222	176	741

HSDA of Patient Residency	# of Patients seeking Physician's care out of HA
CENTRAL VANCOUVER ISLAND	44
NORTH VANCOUVER ISLAND	31
SOUTH VANCOUVER ISLAND	82
Total:	157

Definitions:

Currently prescribing/treated defined as prescribing/being treated in the previous 6 months

of Patients seeking Physician out of HA is defined as patients residing in specified HSDA, but their follow-up physician(s) reside in another HA





**4.13 Distribution of Participants in BC-CfE Registries by Age and Gender
NORTHERN Health Authority**

HSDA	Age Group	Alive	Ever treated with ARVs	Currently treated with ARVs
NORTH EAST	0-19	1	1	0
	20-34	5	6	3
	35-49	17	19	11
	50+	16	21	10
	Total HSDA:	39	47	24
NORTH WEST	0-19	2	2	0
	20-34	7	11	6
	35-49	25	38	20
	50+	29	43	23
	Total HSDA:	63	94	49
NORTHERN INTERIOR	0-19	2	2	1
	20-34	31	34	23
	35-49	72	88	59
	50+	70	115	57
	Total HSDA:	175	239	140
Total HA:		277	380	213

	Age Group	Alive	Ever treated with ARVs	Currently treated with ARVs
	0-19	5	5	1
	20-34	43	51	32
	35-49	114	145	90
	50+	115	179	90
Total HA:		277	380	213

Gender	Alive	Ever treated with ARVs	Currently treated with ARVs
Male	174	242	136
Female	103	138	77

Currently treated with ARVs	# of patients	Med Age	Med CD4	Med PVL
Total HA:	213	47	480	35

Definitions:

Currently treated with ARVs defined as being on ARV therapy in the specified month

Med CD4 and PVL tests defined as most recent tests (as of specified month)





**4.14 Distribution of Participants in BC-CfE Registries by Treatment Duration
NORTHERN Health Authority**

HSDA	Treatment Duration	Alive	Currently treated with ARVs
NORTH EAST	10 years or more	12	6
	5 years or more	11	7
	<5 years	16	11
	Total HSDA:	39	24
NORTH WEST	10 years or more	16	8
	5 years or more	22	20
	<5 years	25	21
	Total HSDA:	63	49
NORTHERN INTERIOR	10 years or more	48	30
	5 years or more	46	43
	<5 years	81	67
	Total HSDA:	175	140
Total HA:		277	213

	Treatment Duration	Alive	Currently treated with ARVs
	10 years or more	76	44
	5 years or more	79	70
	<5 years	122	99
Total HA:		277	213

Definitions:

Currently treated with ARVs defined as being on ARV therapy in the specified month

Treatment Duration defined as number of years since ARV initiation





**4.15 Distribution of ARV Prescribing Physicians in BC-CfE Registries
NORTHERN Health Authority**

HSDA of Physician Residency	# of Physicians ever prescribed ARVs	# of Patients ever treated by Physicians	# of Physicians currently prescribing ARVs	# of Patients currently treated by Physicians
NORTH EAST	29	55	6	9
NORTH WEST	60	139	19	26
NORTHERN INTERIOR	94	370	22	176
Total:	183	564	47	211

HSDA of Patient Residency	# of Patients seeking Physician's care out of HA
NORTH EAST	6
NORTH WEST	18
NORTHERN INTERIOR	19
Total:	43

Definitions:

Currently prescribing/treated defined as prescribing/being treated in the previous 6 months

of Patients seeking Physician out of HA is defined as patients residing in specified HSDA, but their follow-up physician(s) reside in another HA





4.16 Distribution of Aboriginal Participants in BC-CfE Registries by Health Service Delivery Area and Gender

HA	HSDA	Alive	Ever treated with ARVs	Currently treated with ARVs
INTERIOR	EAST KOOTENAY	7	10	5
	KOOTENAY BOUNDARY	3	6	3
	OKANAGAN	15	28	8
	THOMPSON/CARIBOO/SHUSWAP	21	36	19
	Total HA:	46	80	35
FRASER	FRASER EAST	33	41	29
	FRASER NORTH	62	91	46
	FRASER SOUTH	66	92	54
	Total HA:	161	224	129
VANCOUVER COASTAL	NORTH SHORE/COAST GARIBALDI	23	42	19
	RICHMOND	9	14	7
	VANCOUVER	488	760	413
	Total HA:	520	816	439
VANCOUVER ISLAND	CENTRAL VANCOUVER ISLAND	45	70	33
	NORTH VANCOUVER ISLAND	12	21	12
	SOUTH VANCOUVER ISLAND	33	70	30
	Total HA:	90	161	75
NORTHERN	NORTH EAST	9	11	5
	NORTH WEST	30	53	26
	NORTHERN INTERIOR	64	94	60
	Total HA:	103	158	91
Total:		920	1439	769

Gender	Alive	Ever treated with ARVs	Currently treated with ARVs
Male	587	930	490
Female	333	509	279

Currently treated with ARVs	# of patients	Med Age	Med CD4	Med PVL
Total:	769	48	450	35

Definitions:

Currently treated with ARVs defined as being on ARV therapy in the specified month

Med CD4 and PVL tests defined as most recent tests (as of specified month)





5.1 Drug Names and Definitions

Abacavir (Ziagen, ABC): a NUCLEOSIDE ANALOG from ViiV Healthcare.

Active: Persons in the HIV/AIDS Drug Treatment program that are prescribed one or more drugs in this current month

Amphotericin B (Fungilin): a drug used for treatment of candidiasis and other fungal infections.

Amprenavir (Agenerase, APV): a PROTEASE INHIBITOR from ViiV Healthcare.

Antiretroviral (ARV): a substance that stops or suppresses the activity of a retrovirus, such as HIV. NUCLEOSIDE ANALOGS and PROTEASE INHIBITORS are examples of antiretroviral drugs.

Atazanavir (Reyataz, ATV): a PROTEASE INHIBITOR from Bristol-Myers Squibb.

Atovaquone (Mepron): a medication used to treat pneumocystis carinii pneumonia and, in some cases, toxoplasmosis.

Atripla (ATP): the Bristol-Myers Squibb and Gilead trade name for a pill that contains EFAVIRENZ, TENOFOVIR and EMTRICITABINE.

Azithromycin (Zithromax): an antibiotic used for the prevention of mycobacterium avium complex (MAC) in people with advanced HIV infection.

Boosted PI: a combination therapy regimen of four or fewer antiretroviral drugs, including one PI and a small (400 mg or less, total daily dose) additional dose or RITONAVIR. The addition of RITONAVIR inhibits metabolism of other PIs and improves their exposure. This may allow for decreased dosing frequency or pill burden and may improve adherence and antiretroviral activity.

CD4 Cell Count: the most commonly used marker for assessing the state of the immune system. As CD4 cell count declines, the risk of developing opportunistic infections increases. Normal CD4 cell counts are greater than 800 per cubic millimeter of blood.

Chemokine Receptor Inhibitor: a type of ENTRY INHIBITOR designed to prevent HIV entry by blocking the binding site of co-receptors, such as CCR5 or CXCR4.

Clarithromycin (Biaxin): an antibiotic used for the treatment of mycobacterium avium complex (MAC). It is also used for preventing MAC in those with advanced HIV infection.

Combination Therapy: using at least two drugs simultaneously to more effectively combat a disease. Initial combination therapy for HIV contains at least three ANTIRETROVIRALS.

Combivir (CBV): the ViiV Healthcare trade name for a pill that contains both ZIDOVUDINE (AZT) and LAMIVUDINE (3TC).

Complera (CPL): the Gilead and Janssen trade name for a pill that contains EMTRICITABINE, RILPIVIRINE and TENOFOVIR.

Darunavir (Prezista, DRV): a PROTEASE INHIBITOR from Janssen that has activity against HIV in treatment-experienced patients.

Deceased: persons enrolled in the HIV/AIDS Drug Treatment program that died in this time period.

Delavirdine (Rescriptor, DLV): a NON-NUCLEOSIDE REVERSE TRANSCRIPTASE INHIBITOR (NNRTI) from Agouron/ViiV Healthcare.





Didanosine (Videx, DDI): a NUCLEOSIDE ANALOG from Bristol-Myers Squibb.

Dolutegravir (DTG): an INTEGRASE INHIBITOR from ViiV Healthcare that has demonstrated activity against HIV in treatment-experienced patients.

Efavirenz (Sustiva, EFV): a NON-NUCLEOSIDE REVERSE TRANSCRIPTASE INHIBITOR (NNRTI) from Bristol-Myers Squibb.

Elvitegravir (EGV): an INTEGRASE INHIBITOR from Gilead Sciences that has demonstrated activity against HIV in treatment-experienced patients.

Emtricitabine (FTC): a nucleoside analog from Gilead Sciences. It is currently available as a component of TRUVADA.

Enfuvirtide (Fuzeon, T20): a FUSION INHIBITOR from Hoffman-La Roche that targets the gp41 protein on the surface of HIV. It is administered as a subcutaneous injection.

Entry Inhibitor: a drug that inhibits the entry of HIV into cells. Entry inhibitors include FUSION INHIBITORS, CHEMOKINE RECEPTOR INHIBITORS, and attachment inhibitors.

Etravirine (ETV): a NON-NUCLEOSIDE REVERSE TRANSCRIPTASE INHIBITOR from Janssen that has activity against HIV in treatment-experienced patients.

Ethambutol (Myambutol): an antibiotic used in COMBINATION THERAPY for treatment of mycobacterial infections such as tuberculosis and mycobacterium avium complex (MAC).

Famciclovir (Famvir): a PRODRUG for an acyclovir-like active compound. It is an approved therapy for shingles and recurrent outbreaks of herpes simplex-2.

First started program: a person prescribed their first regimen ever in the HIV/AIDS drug treatment program.

Fosamprenavir (Telzir, fAPV): a PROTEASE INHIBITOR from ViiV Healthcare. Fosamprenavir is a PRODRUG of AMPRENAVIR.

Fusion Inhibitor: a type of ENTRY INHIBITOR designed to prevent HIV from fusing with and thereby infecting CD4 cells.

Granulocyte Colony Stimulating Factor (GCSF, Neupogen): a natural hormone that stimulates production of granulocytes, a type of white blood cell (leukocyte).

Health Authority: refers to the five (Interior, Fraser, Northern, Vancouver Coastal, Vancouver Island) health authorities created by the BC Ministry of Health.

Inactive: Persons no longer prescribed drugs through the HIV/AIDS Drug Treatment program this current month.

Indinavir (Crixivan, IDV): a PROTEASE INHIBITOR from Merck.

Integrase Inhibitor: a drug that blocks integrase, a protein that HIV needs to enter cells and produce copies of itself, from working.

Kivexa (KIV): ViiV Healthcare's trade name for a pill that contains both ABACAVIR and LAMIVUDINE.

Lamivudine (3TC): a NUCLEOSIDE ANALOG from ViiV Healthcare with activity against HIV and hepatitis B.





Lopinavir (Kaletra, LPV/r): a PROTEASE INHIBITOR from Abbott Laboratories. Kaletra is a combination of lopinavir and a low dose of RITONAVIR, a drug that improves blood levels of lopinavir.

Maraviroc (MVC, Celsentri): a CHEMOKINE RECEPTOR INHIBITOR from ViiV Healthcare that inhibits HIV entry by blocking the binding site of the CCR5 co-receptor.

Median (MED) age: median age of participants in the HIV/AIDS Drug Treatment program in that time period.

MDRT: see MULTIPLE DRUG RESCUE THERAPY

Moved out of BC: a person in the HIV/AIDS Drug Treatment program that is no longer in the program, because they moved out of BC in this time period.

Moxifloxacin: a fluoroquinolone antibiotic that is used for treatment of mycobacterium avium complex which is resistant to clarithromycin.

Multiple Drug Rescue Therapy (MDRT or Mega-HAART): the use of five or more antiretrovirals to treat HIV, typically some or all of which have been used previously by the individual.

Nelfinavir (Viracept, NFV): a PROTEASE INHIBITOR from ViiV Healthcare.

Net change: The net increase or decrease in persons enrolled in the HIV/AIDS Drug Treatment Program from the previous time period.

Nevirapine (Viramune, NVP): a NON-NUCLEOSIDE REVERSE TRANSCRIPTASE INHIBITOR (NNRTI) from Boehringer Ingelheim.

NNRTI: see NON-NUCLEOSIDE REVERSE TRANSCRIPTASE INHIBITOR.

NNRTI / no PI: a combination therapy regimen of four or fewer antiretroviral drugs, including an NNRTI, but no PIs.

Non-Nucleoside Reverse Transcriptase Inhibitor (NNRTI): a member of a class of compounds, including DELAVIRDINE, NEVIRAPINE, EFAVIRENZ and ETRAVIRINE that acts to directly combine with and block the action of HIV's reverse transcriptase enzyme.

NRTI: see NUCLEOSIDE ANALOG.

Nucleoside Analog (Nucleoside Analog Reverse Transcriptase Inhibitor, NRTI): a type of ANTIVIRAL drug, such as AZT (ZIDOVUDINE), ddI (DIDANOSINE) or 3TC (LAMIVUDINE), whose structure constitutes a defective version of a natural nucleoside. Nucleoside analogs may take the place of the natural nucleosides, blocking the completion of a viral DNA chain during infection of a new cell by HIV. The HIV enzyme reverse transcriptase is more likely to incorporate nucleoside analogs into the DNA it is constructing than is the DNA polymerase that cells normally use for DNA construction.

Nucleotide Analog: ANTIVIRAL compounds such as TENOFOVIR that function exactly like NUCLEOSIDE ANALOGS but are pre-activated through the addition of a phosphate group during their synthesis. This phosphorylation is supposed to enhance the drug levels and activity achieved within cells.

Octreotide Acetate (Sandostatin): a drug used to treat chronic refractory diarrhea.

One or more PI: a combination therapy regimen of four or fewer antiretroviral drugs, including one unboosted PI or 2 or more PIs with or without a small (400 mg or less, total daily dose) additional dose of RITONAVIR.

Other: an antiretroviral regimen in the HIV/AIDS Drug Treatment program other than NNRTI/no PI, boosted PI, 1 or more PIs or MDRT-based regimens (eg. Triple Nucleoside regimens).





Paromomycin (Humatin): an antibiotic used to treat infections caused by intestinal parasites, including AIDS-related cryptosporidiosis.

Pentamidine: an antiprotozoal drug used in aerosol form as a preventative against pneumocystis carinii pneumonia (PCP).

PI: see PROTEASE INHIBITOR.

Prodrug: a compound that is converted within the body into the active form that has medical effects.

Protease Inhibitor: a drug that binds to and blocks HIV protease from working, thus preventing the production of new functional viral particles.

Raltegravir (RGV, Isentress): an INTEGRASE INHIBITOR from Merck that has activity against HIV in treatment-experienced patients.

Restarted/ changed therapy (Tx): a person in the HIV/AIDS Drug Treatment program that was either CURRENTLY OFF THERAPY and now has been prescribed a new regimen or a person who has changed regimens.

Rifabutin (Mycobutin): an oral drug used to prevent mycobacterium avium complex (MAC) in people with advanced HIV infection. Rifabutin is also used in combination with other drugs for the treatment of active MAC infections.

Rilpivirine (Edurant): a NON-NUCELOSIDE REVERSE TRANSCRIPTASE INHIBITOR (NNRTI) from Janssen.

Ritonavir (Norvir, RTV): a PROTEASE INHIBITOR from Abbott. Ritonavir is commonly used to inhibit the liver enzyme metabolism of other protease inhibitors and improve their blood exposure.

Saquinavir (Invirase, SQV): a PROTEASE INHIBITOR from Hoffman-La Roche.

Stavudine (Zerit, d4T): a NUCLEOSIDE ANALOG from Bristol-Myers Squibb.

Stopped all therapies (Tx): a person in the HIV/AIDS Drug Treatment program that stopped all therapies in this time period and is now CURRENTLY OFF THERAPY.

Stribild (STR): the Gilead trade name for a pill that contains ELVITEGRAVIR, COBICISTAT, EMTRICITABINE and TENOFOVIR.

Tenofovir (Viread, TDF): a NUCLEOTIDE ANALOG from Gilead Sciences with activity against HIV and hepatitis B.

Tipranavir (Aptivus, TPV): a PROTEASE INHIBITOR from Boehringer Ingelheim that has activity against HIV in treatment-experienced patients.

Triple Therapy: the use of three drugs, most often a PROTEASE INHIBITOR or NON-NUCLEOSIDE ANALOG with two NUCLEOSIDE ANALOGS, in the treatment of HIV.

Trizivir (TRZ): ViiV Healthcare's trade name for a pill that combines ABACAVIR (ABC), ZIDOVUDINE (AZT) and LAMIVUDINE (3TC).

Truvada (TRU): the Gilead trade name for a pill that contains both TENOFOVIR and EMTRICITABINE.

Valganciclovir: an antiviral drug used to treat cytomegalovirus (CMV) retinitis.

Viral Load: the amount of HIV RNA per unit of blood plasma. An indicator of virus concentration and reproduction rate. HIV viral load is employed as a measure of the success of antiretroviral therapy.

Zidovudine (Retrovir, AZT): a NUCLEOSIDE ANALOG from ViiV Healthcare. AZT is also approved for preventing maternal-fetal HIV transmission.

